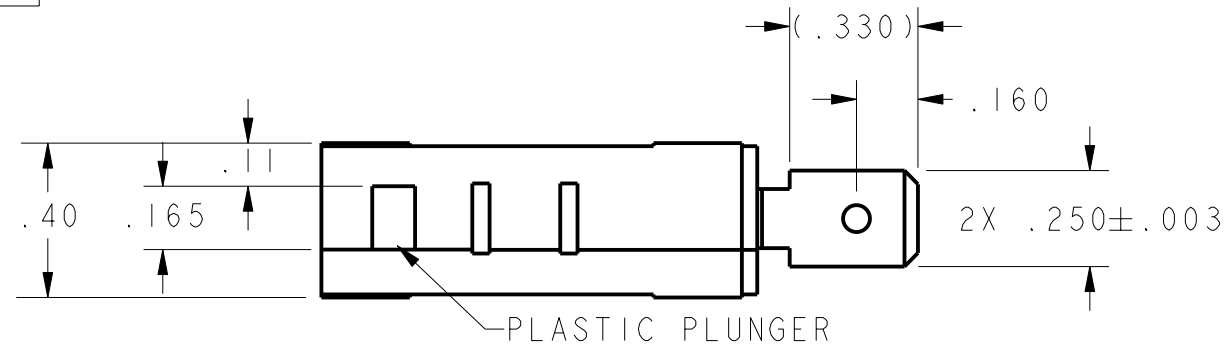
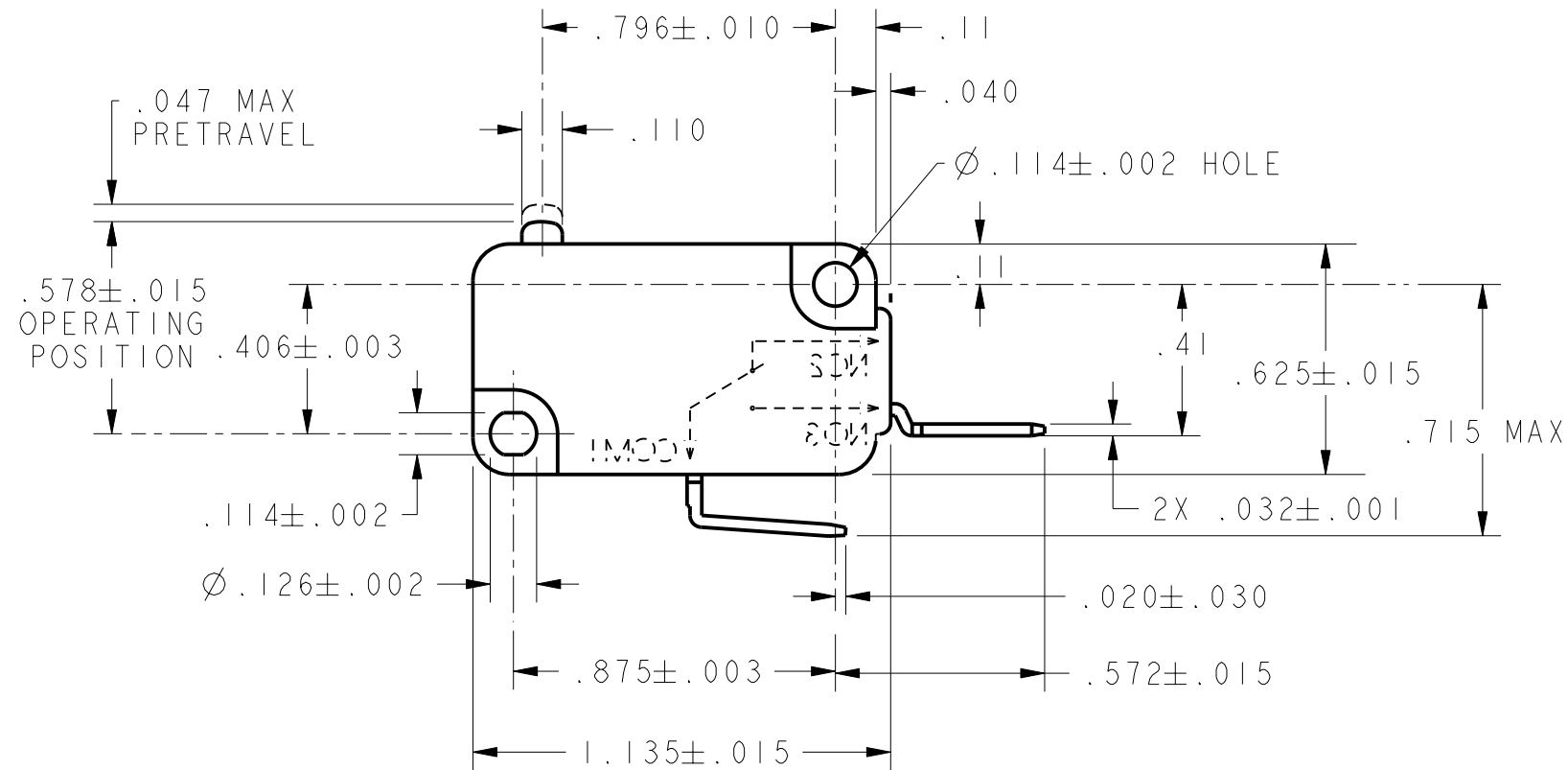


| REV | DOCUMENT | CHANGED BY | CHECK |
|-----|----------|-------------|-------|
| 6 | 207443 | TSM 17FEB03 | SAV |



NOTE
 1 - MAXIMUM MECHANICAL DEAD BREAK OF .0025 MAY BE EXPECTED WITH THIS SWITCH CONSTRUCTION



| CHARACTERISTICS | |
|---------------------|---------------------|
| OPERATING FORCE | --125-225 GRAMS MAX |
| RELEASE FORCE | -----55 GRAMS MIN |
| DIFFERENTIAL TRAVEL | ----- .010 MAX |
| OVERTRAVEL | ----- .050 MIN |
| FREE POSITION | ----- .625 MAX |
| RELEASE TRAVEL | ----- .010 MIN |

| ELECTRICAL DATA | |
|--------------------------------|--|
| CONTACT ARRANGEMENT S P N O | |
| 25A, 277 VAC | |
| 1HP, 125 VAC | |
| 2HP, 250 VAC | |

| | | | |
|--|---|---|-------|
| UNLESS OTHERWISE SPECIFIED TOLERANCES ARE: | | | |
| | <input checked="" type="checkbox"/> US (inch) CUSTOMARY | <input type="checkbox"/> SI (mm) METRIC | |
| NO PLACE | X | ±.040 | ±1 |
| ONE PLACE | .X | ±.030 | ±0,4 |
| TWO PLACE | .XX | ±.015 | ±0,15 |
| THREE PLACE | .XXX | ±.005 | ± |
| ANGLES | | ± | ± |
| RAW MATERIAL-COMMERCIAL STANDARD | | | |
| THIRD ANGLE PROJECTION | | | |

| | | |
|--|------------------|---------|
| DRAWN | TSM | 17FEB03 |
| CHECK | SAV | 17FEB03 |
| THIS DRAWING COVERS A PROPRIETARY ITEM AND IS THE PROPERTY OF HONEYWELL. THIS DRAWING IS NOT TO BE COPIED OR USED WITHOUT THE PERMISSION OF HONEYWELL. | | |
| PTC 2D | ASME Y14.5M-1994 | |

| | | | |
|-------------------------------|----------|------------------|----------|
| Honeywell | | | |
| TITLE SWITCH, BASIC | | | |
| SIZE | DWG TYPE | DRAWING NAME | REV |
| B | I | V7-1Z29E9 | 6 |
| SCALE 2 : 1 | WEIGHT | SHEET 1 OF 1 | |

