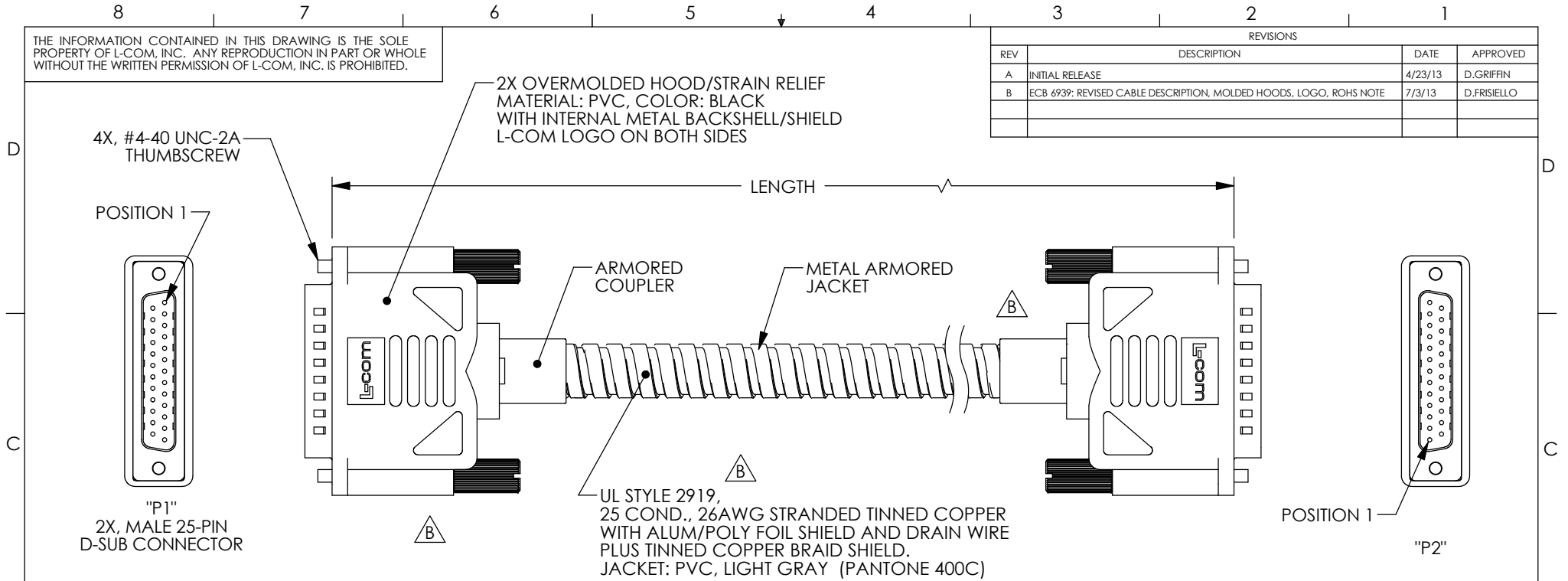


THE INFORMATION CONTAINED IN THIS DRAWING IS THE SOLE PROPERTY OF L-COM, INC. ANY REPRODUCTION IN PART OR WHOLE WITHOUT THE WRITTEN PERMISSION OF L-COM, INC. IS PROHIBITED.

REVISIONS			
REV	DESCRIPTION	DATE	APPROVED
A	INITIAL RELEASE	4/23/13	D.GRIFFIN
B	ECB 6939: REVISED CABLE DESCRIPTION, MOLDED HOODS, LOGO, ROHS NOTE	7/3/13	D.FRISIELLO



"P1"
2X, MALE 25-PIN
D-SUB CONNECTOR

"P2"
2X, MALE 25-PIN
D-SUB CONNECTOR

"P1"	WIRE COLOR	"P2"
1	BLACK	1
2	BROWN	2
3	RED	3
4	ORANGE	4
5	YELLOW	5
6	GREEN	6
7	BLUE	7
8	VIOLET	8
9	GRAY	9
10	WHITE	10
11	PINK	11
12	PINK/BLACK	12
13	LIGHT GREEN	13
14	BLACK/WHITE	14
15	BROWN/WHITE	15
16	RED/WHITE	16
17	ORANGE/WHITE	17
18	GREEN/WHITE	18
19	BLUE/WHITE	19
20	VIOLET/WHITE	20
21	RED/BLACK	21
22	ORANGE/BLACK	22
23	YELLOW/BLACK	23
24	GREEN/BLACK	24
25	GRAY/BLACK	25
SHELL	DRAIN WIRE	SHELL

MODEL NUMBER	LENGTH	
	FEET	METERS
CSMT25MM-2.5	2.5	.76
CSMT25MM-5	5.0	1.52
CSMT25MM-10	10.0	3.05
CSMT25MM-15	15.0	4.57
CSMT25MM-25	25.0	7.62
CSMT25MM-50	50.0	15.24

NOTES:

1. CABLE ASSEMBLY SHALL BE TESTED FOR CONTINUITY.
2. CABLE ASSEMBLY SHALL BE INDIVIDUALLY PACKAGED IN ACCORDANCE WITH L-COM SPECIFICATION PS-0031.

REGULATORY COMPLIANCE:
ROHS, CE

UNLESS OTHERWISE SPECIFIED, DIMENSIONS ARE IN INCHES [mm] OVERALL CABLE LENGTH TOLERANCE: ≤12 [305] = +1 [25] / -0 >12 [305] ≤60 [1524] = +2 [51] / -0 >60 [1524] ≤120 [3048] = +4 [102] / -0 >120 [3048] ≤300 [7620] = +6 [152] / -0 >300 [7620] = +3% / -0% ALL OTHER DIMENSIONAL TOLERANCES: .X = ±.2 .XX = ±.02 .XXX = ±.005	APPROVALS DRAWN BY D.FRISIELLO CHECKED BY D.PARHAM APPROVED BY S.SMITH	DATE 5/11/11 5/11/11 5/11/11	45 BEECHWOOD DRIVE NORTH ANDOVER, MA 01845	
	CONFIGURATION DETAILS OF UNDIMENSIONED FEATURES MAY VARY			CATEGORY D-SUBMINIATURE
	PROJECTION 	COLOR VARIATIONS MAY OCCUR	SIZE A	FSCM NO. 43321
	DWG. NO. CSMT25MM		REV. B	SCALE: NONE CAD FILE: CSMT25MM.SLDDRW SHEET 1 OF 1