

"Explosionszeichnung als Referenz,
Polzahl siehe description"
"Exploded drawing for reference,
pole count see description"

CHANGES SEE
REVISION MARKING A1

PIN NUMBERS/NOTES

A1

Druckschraube
pressing screw

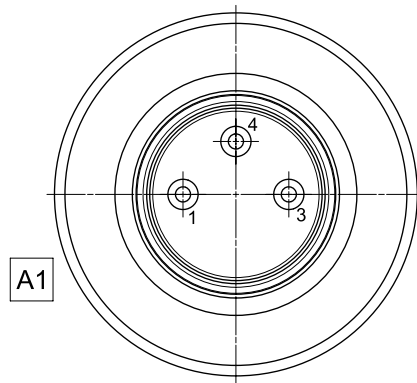
Klemmkorb
pinch ring

Dichtring
sealing ring

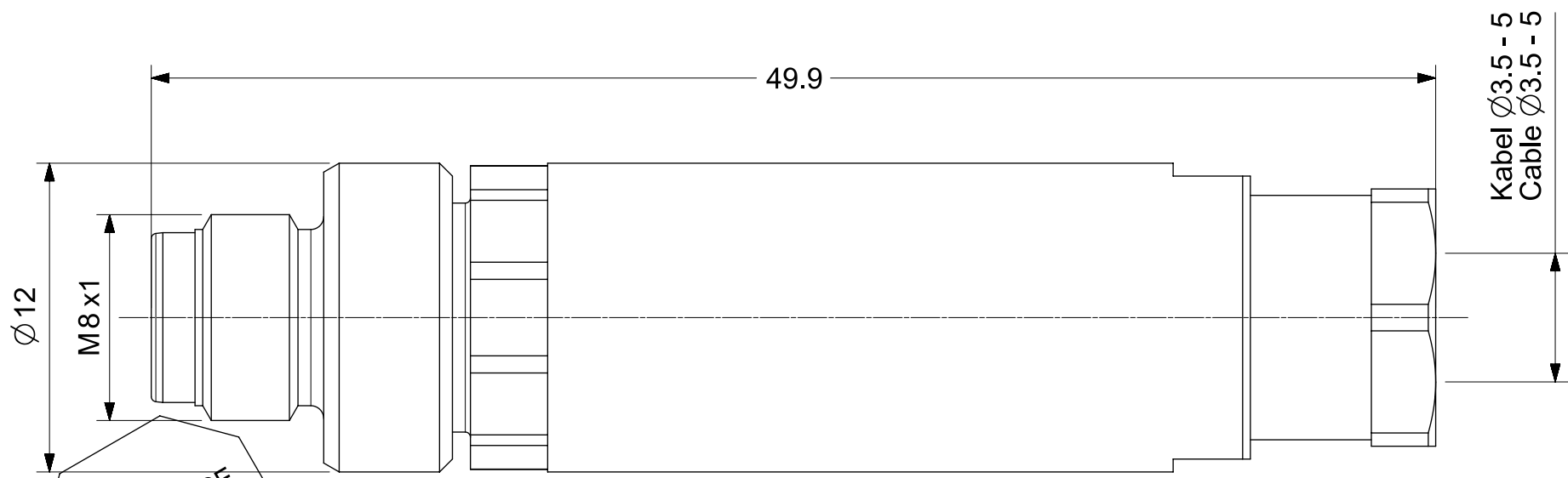
Kupplungshülse
sleeve

Buchseinsatz
female insert

Steckereinsatz
male insert



A1



NOTES:

1. LOCKING SYSTEM: SCREW
WIRE GAUGE: 0.14 - 0.50mm²
CABLE OUTLET: 3.5 - 5mm
2. ELECTRICAL DATA:
CURRENT RATING: 4A
VOLTAGE RATING: 60V
3. MECHANICAL:
OPERATING TEMP.: -40°C - 85°C
PROTECTION CLASS: IP67
4. MATERIAL:
CONTACT: CuZn (BRASS)
CONTACT PLATING: Au (GOLD)

ENG.-NO: N03MA03134

| | | | | | | | | | | | |
|---|--|--|---------------------------------------|---------------|------------------------|--------------------------|-----------------|----------------|----------|--------------|--|
| THIS DRAWING CONTAINS INFORMATION THAT IS PROPRIETARY TO MOLEX ELECTRONIC TECHNOLOGIES, LLC AND SHOULD NOT BE USED WITHOUT WRITTEN PERMISSION | | | | | | | | | | | |
| QUALITY SYMBOLS FA = 0 FE = 0 FB = 0 FV = 0 FC = 0 FX = 0 FS = 0 FT = 0 | EC NO: 107393 DRWN: LRAMMURTHY CHK'D: APPR: | 2016/08/10 2015/06/30 | GENERAL TOLERANCES (UNLESS SPECIFIED) | | DIMENSION UNITS | SCALE | | | | | |
| | | | ANGULAR TOL ± 1.0 ° | | MM | 4:1 | | | | | |
| | | | 4 PLACES ± | 3 PLACES ± | MSCHWARZ | 2015/06/30 | | | | | |
| | | | 2 PLACES ± 0.05 | 1 PLACE ± 0.3 | CHK'D BY | DATE | | | | | |
| 0 PLACES ± 0.5 | | DRAFT WHERE APPLICABLE MUST REMAIN WITHIN DIMENSIONS | | APPR BY | DATE | PRODUCT CUSTOMER DRAWING | | | | | |
| A1 | | REV | APPR | DRAWING SIZE | THIRD ANGLE PROJECTION | SERIES | MATERIAL NUMBER | CUSTOMER | | | |
| | | | | A3 | | 120091 | 1200910023 | GENERAL MARKET | | | |
| | | | | | | DOCUMENT NUMBER | | DOC TYPE | DOC PART | SHEET NUMBER | |
| | | | | | | 1200910023 | | PSD | 000 | 1 OF 1 | |