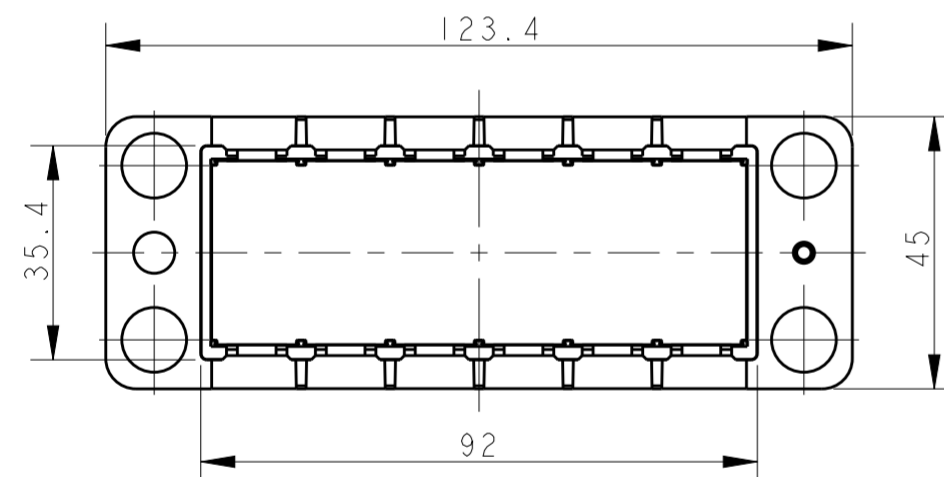
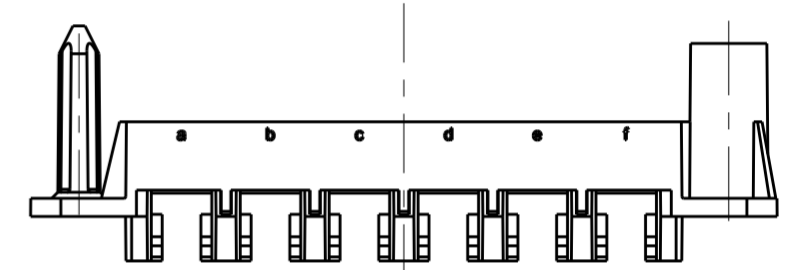
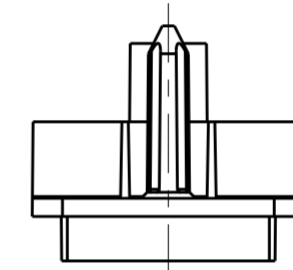
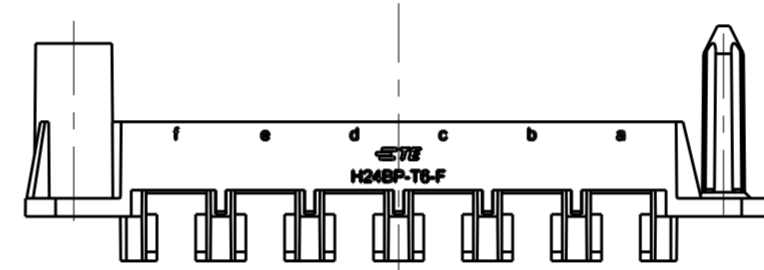
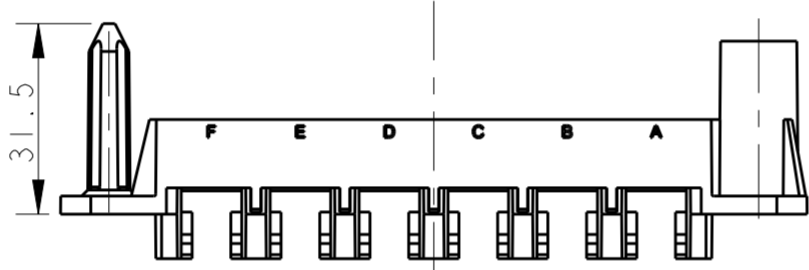
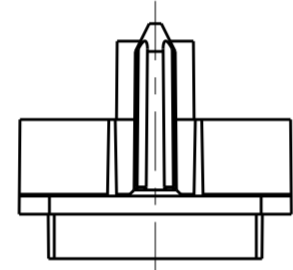
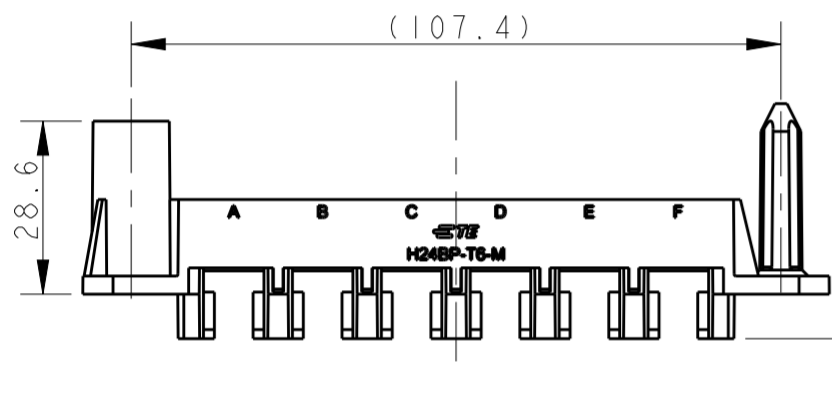
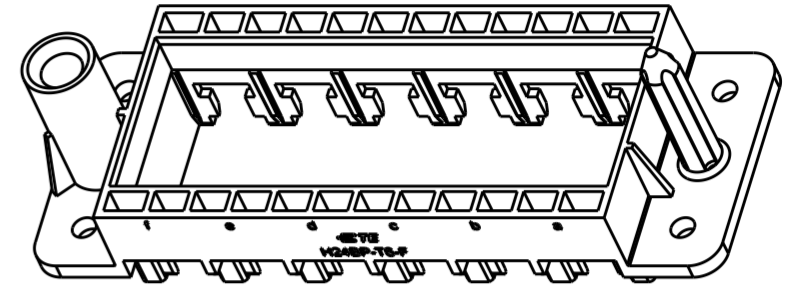
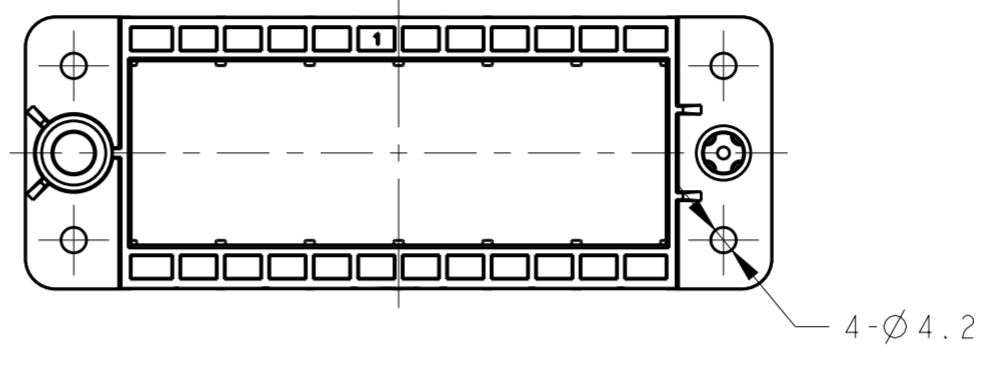
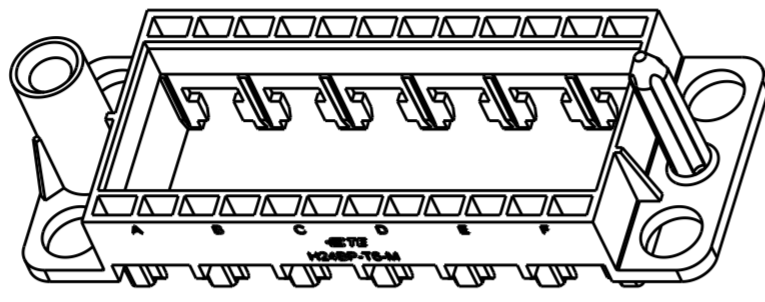
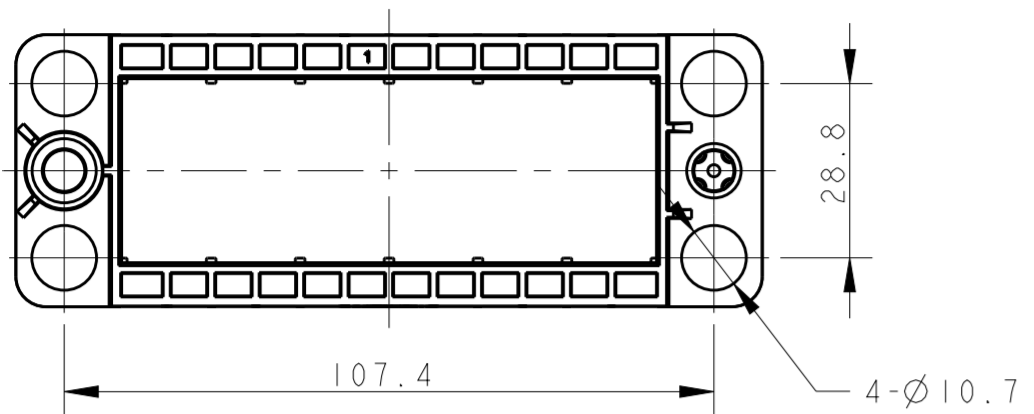


THIS DRAWING IS UNPUBLISHED. RELEASED FOR PUBLICATION 20  
 © COPYRIGHT 20 BY - ALL RIGHTS RESERVED.

REVISIONS				
P	LTR	DESCRIPTION	DATE	APVD
	A	INITIAL RELEASE	30DEC2015	DL CW



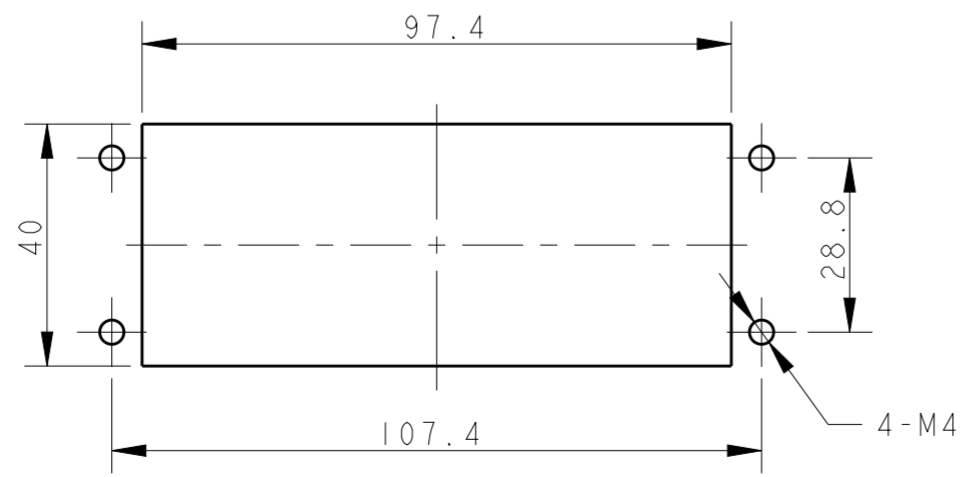
H24BP-T6-M  
 T2071244101-000  
 DOCKING FRAME FOR HMN INSERTS\_FLOATING  
 6 MODULES

OTHER SPEC REFER TO  
 PN T2071244101-000

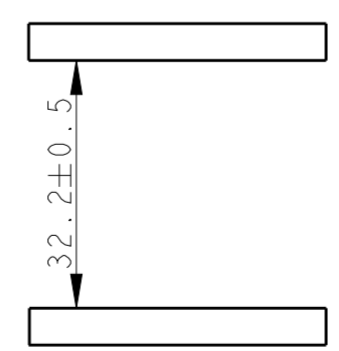
H24BP-T6-F  
 T2071244201-000  
 DOCKING FRAME FOR HMN INSERTS\_FIXED  
 6 MODULES

NOTES:  
 1. TECHNICAL CHARACTERISTICS:  
 INSULATION MATERIAL: PC  
 FLAMMABILITY: UL94V-0  
 MATING CYCLES: 500

注释:  
 1. 技术参数:  
 绝缘材料: PC  
 阻燃等级: UL94V-0  
 插拔次数: 500次



PANEL CUT OUT



SPACING OF TWO PANELS AT CLOSE STATUS

T2071244201-000	H24BP-T6-F DOCKING FRAME FOR HMN INSERTS_FIXED HMN 塑胶框架_固定端
T2071244101-000	H24BP-T6-M DOCKING FRAME FOR HMN INSERTS_FLOATING HMN 塑胶框架_浮动端
PART NUMBER 料号	PART DESCRIPTION 描述

THIS DRAWING IS A CONTROLLED DOCUMENT.		DWN 30DEC2015 DAVID LI	TE Connectivity
DIMENSIONS: mm		CHK 30DEC2015 CHRIS WANG	
TOLERANCES UNLESS OTHERWISE SPECIFIED:		APVD 30DEC2015 XU XIANG	
0 PLC ± 1 PLC ± 2 PLC ± 3 PLC ± 4 PLC ± ANGLES ± FINISH -		PRODUCT SPEC 108-137168 APPLICATION SPEC 114-137168 WEIGHT - CUSTOMER DRAWING	
NAME: H24BP-T6-M/F DOCKING FRAME FOR HMN INSERTS 6 MODULES			RESTRICTED TO
SIZE: A2			SCALE: 4:5
DRAWING NO: G-T2071244X01000			SHEET 1 OF 1
REV: A			REV: A