

THIS DRAWING IS UNPUBLISHED. RELEASED FOR PUBLICATION 20  
 © COPYRIGHT 20 BY - ALL RIGHTS RESERVED.

| REVISIONS |     |                    |             |      |
|-----------|-----|--------------------|-------------|------|
| P         | LTR | DESCRIPTION        | DATE        | APVD |
|           | A2  | 2314277-2 RELEASED | 31 JUL 2018 | SM   |
|           |     |                    |             |      |
|           |     |                    |             |      |

| ABSOLUTE MAXIMUM RATINGS   | SYMBOL | MIN | MAX | UNIT |
|----------------------------|--------|-----|-----|------|
| STORAGE TEMPERATURE        | Tstg   | -40 | 85  | °C   |
| POWER SUPPLY INPUT VOLTAGE | Vdd    | 3.1 | 3.5 | VDC  |
| TOTAL SYSTEM CURRENT DRAW  | Id     | x   | 10  | mA   |

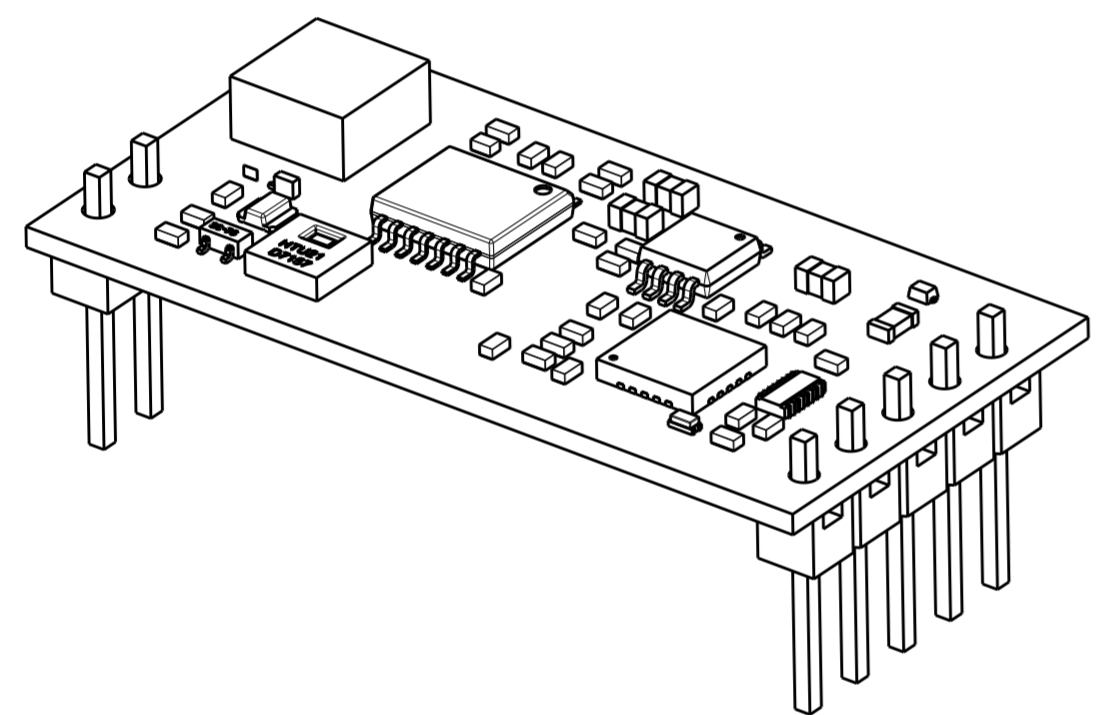
| ELECTRICAL CHARACTERISTICS      | MIN | MAX | UNIT |
|---------------------------------|-----|-----|------|
| ANALOG AUDIO OUTPUT SENSITIVITY | -25 | -19 | dBV  |
| ANALOG AUDIO OUTPUT FREQ RANGE  | 100 | 10k | Hz   |

| ENVIRONMENTAL CHARACTERISTICS                           | MIN | MAX | UNIT |
|---|-----|-----|------|
| OPERATING TEMPERATURE                                   | -5  | 50  | °C   |
| RELATIVE HUMIDITY OPERATING, NON-CONDENSING ENVIRONMENT | 5   | 95  | %    |

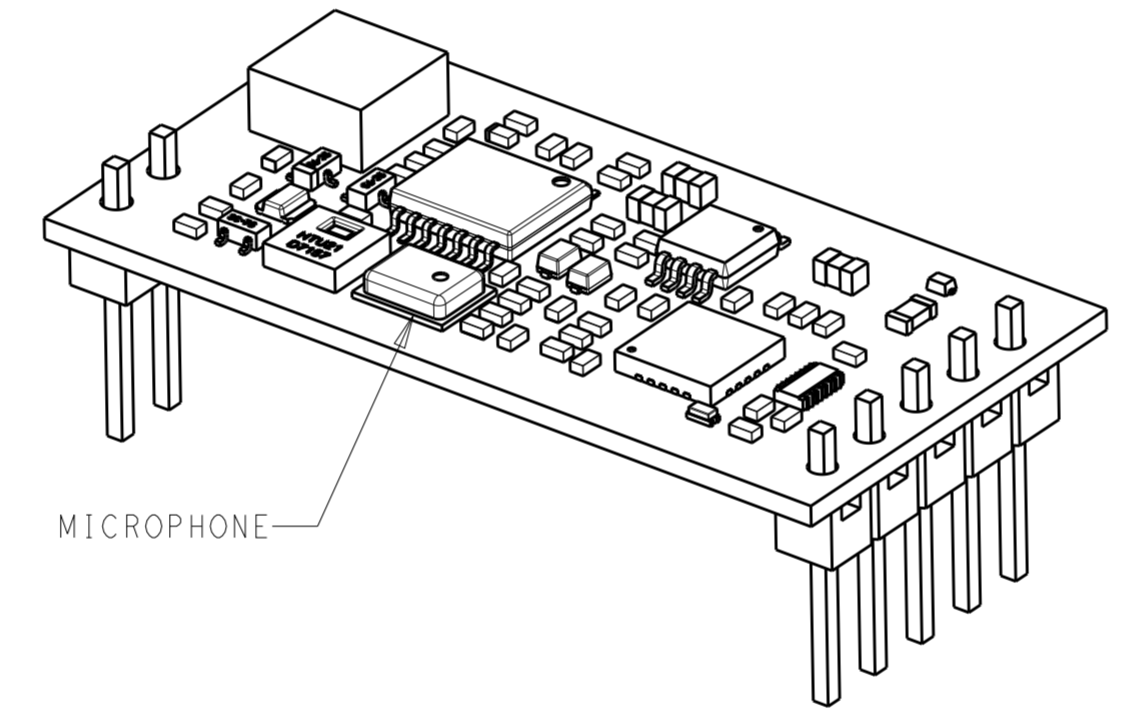
| ITEM: SENSOR            | SENSOR PERFORMANCE                                       |
|-------------------------|--|
| 1: TEMPERATURE          | -5°C TO +50°C ±0.3°C ACCURACY, 1 SECOND ACQUISITION RATE |
| 2: RELATIVE HUMIDITY    | 5% TO 95% RH, 2% ACCURACY, 1 SECOND ACQUISITION RATE     |
| 3: MOTION               | INTERRUPT DRIVEN, RESPONSE <0.5 SECS.                    |
| 4: AMBIENT LIGHT LEVELS | 1 SECOND ACQUISITION RATE                                |
| 5: MICROPHONE           | INTERRUPT DRIVEN, RESPONSE <0.5 SECS.                    |

NOTES:

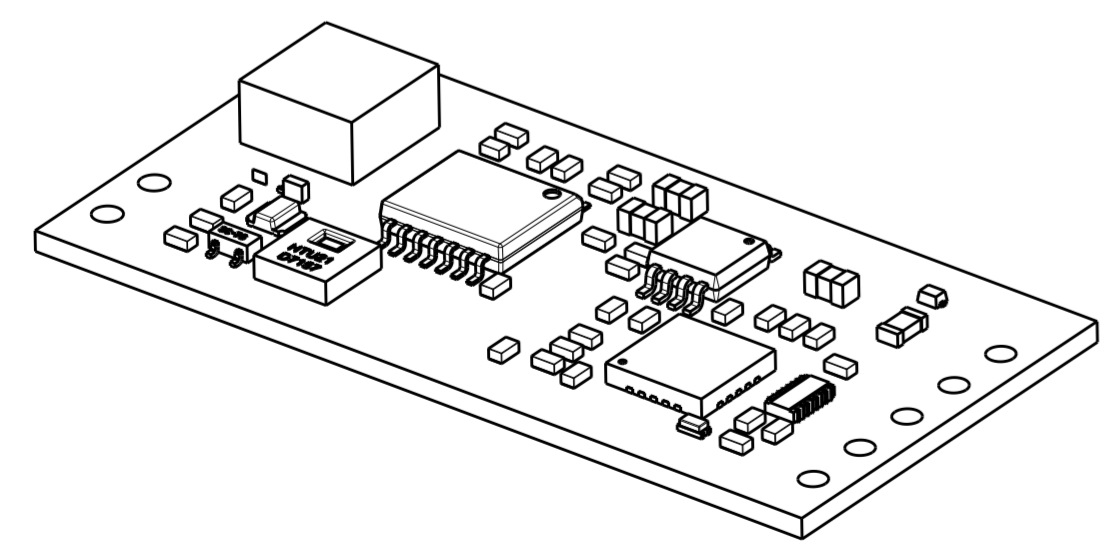
1. THIS PRODUCT HAS NOT COMPLETED VALIDATION TESTING,
2. MUST COMPLY WITH DIRECTIVE 2002/95/EC (ROHS).
3. SEPARATE LENS IS AVAILABLE UNDER TE P/N: 2317697-1.



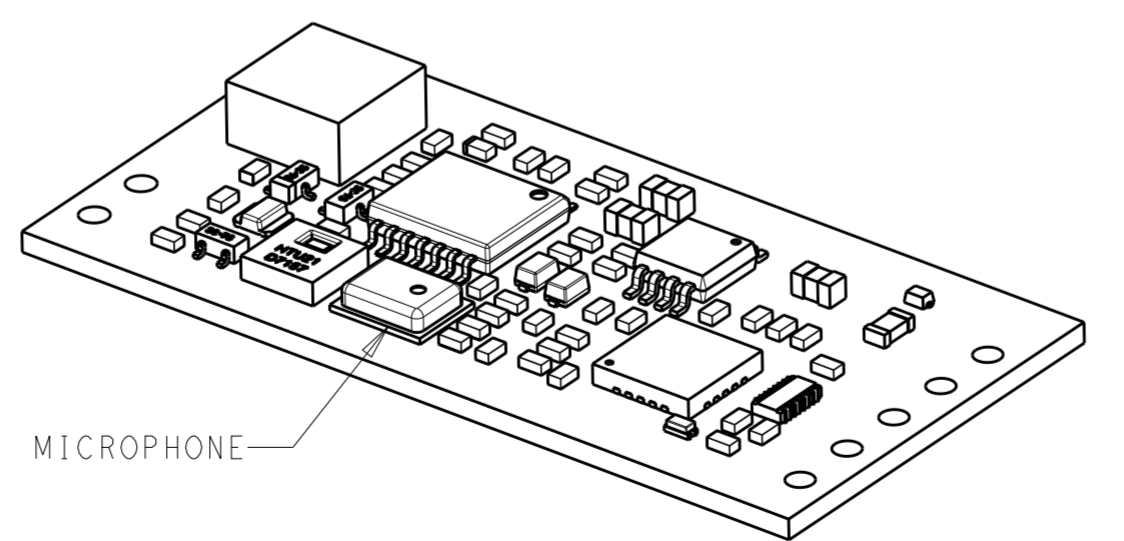
2314277-1 SHOWN



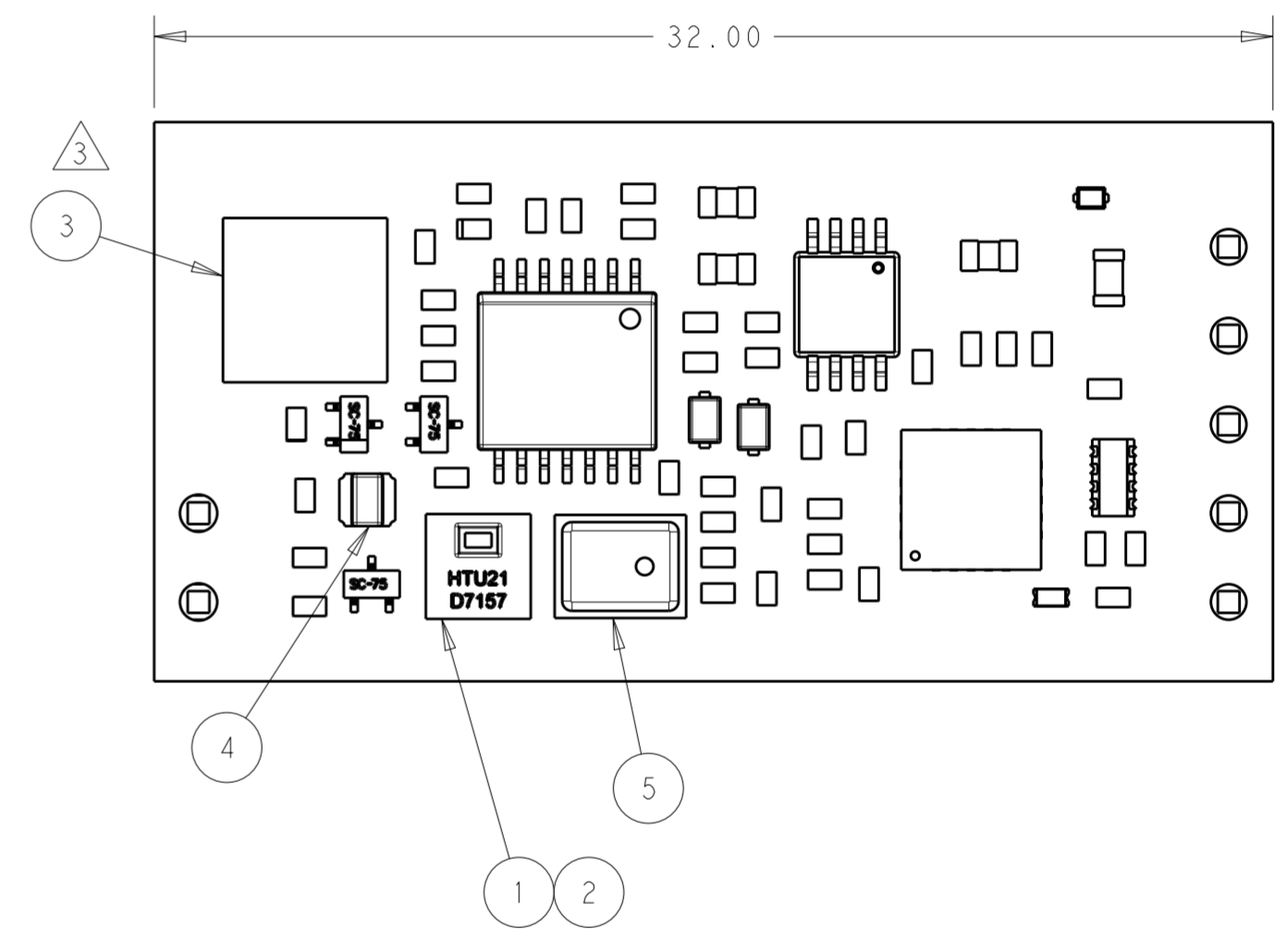
2314277-2 SHOWN



1-2314277-1 SHOWN



1-2314277-2 SHOWN

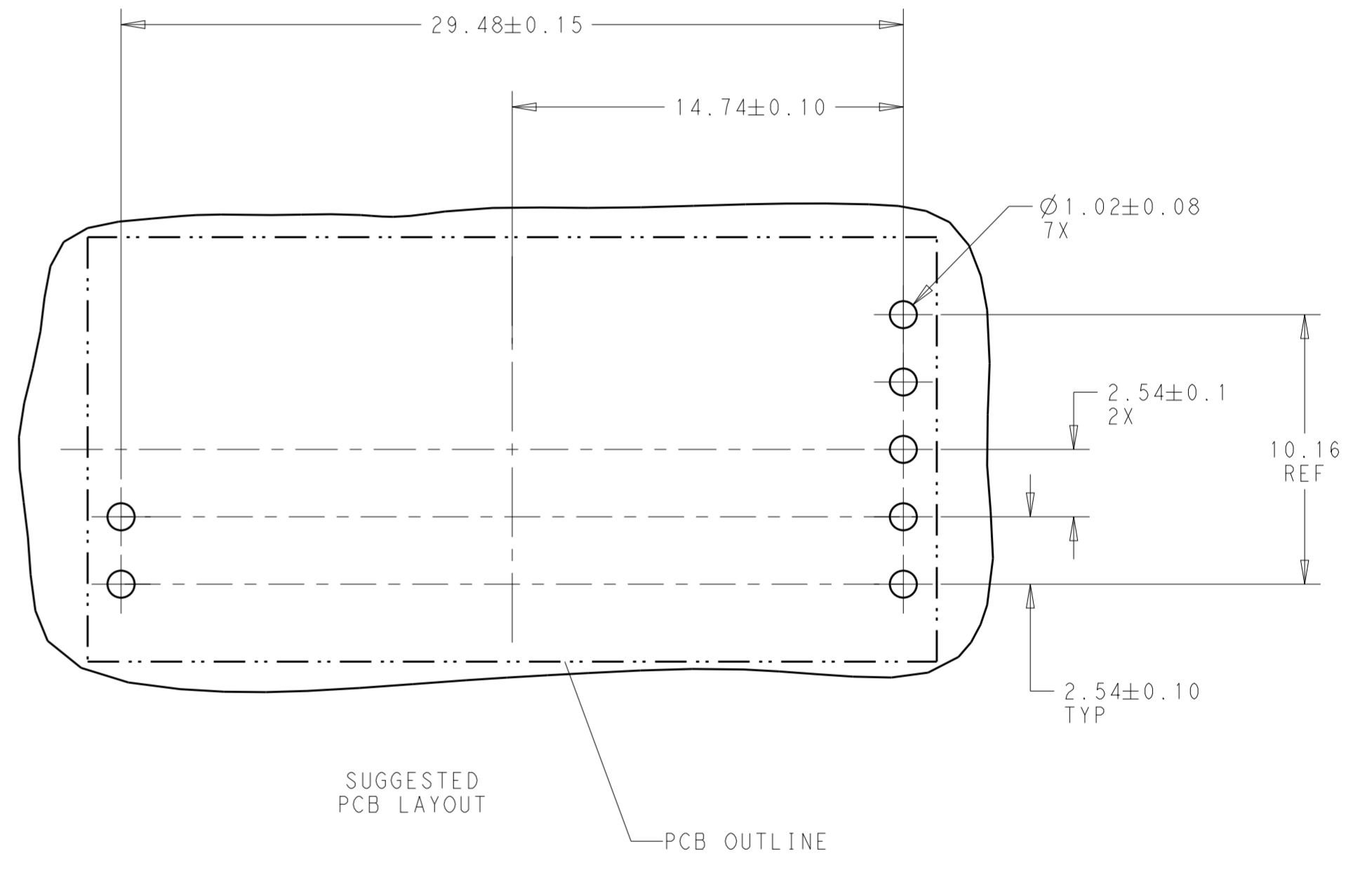
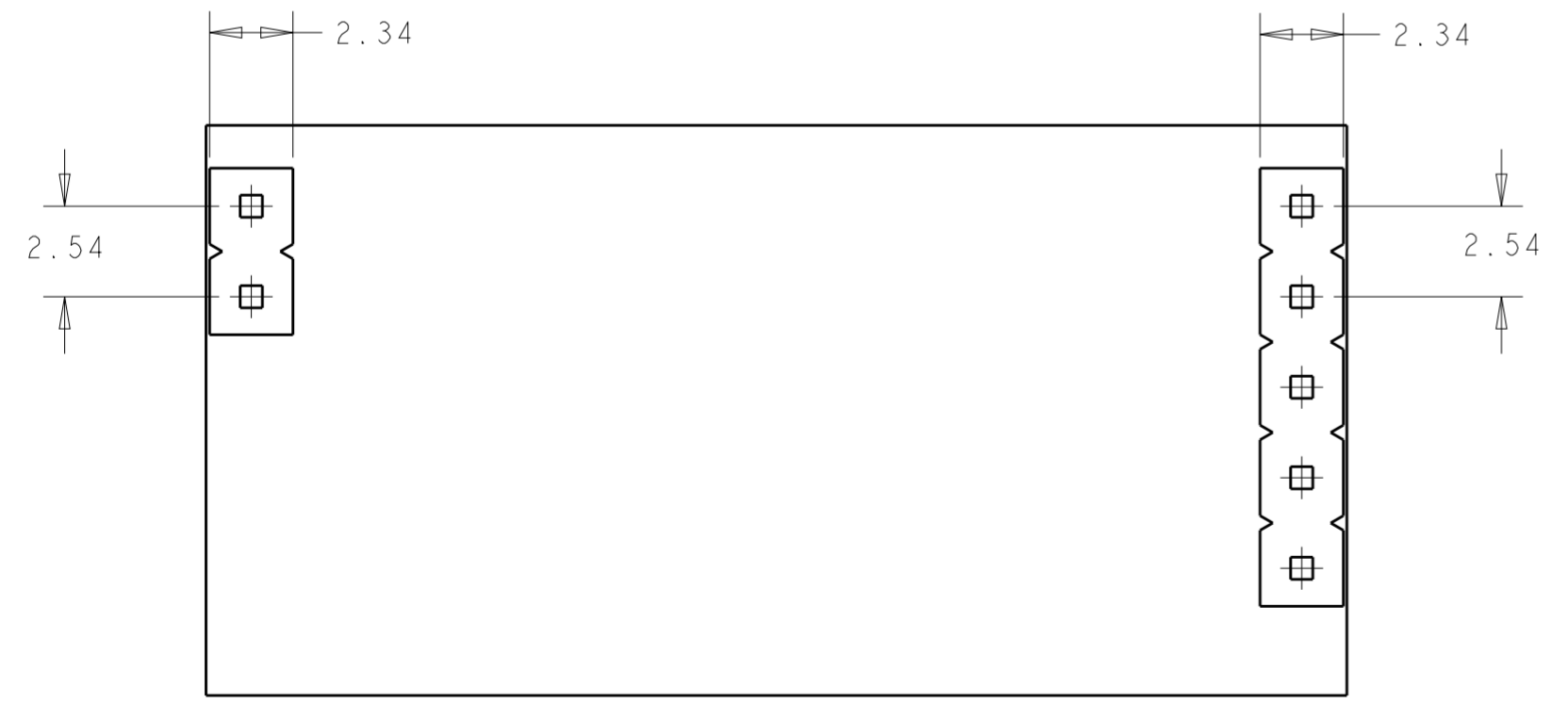
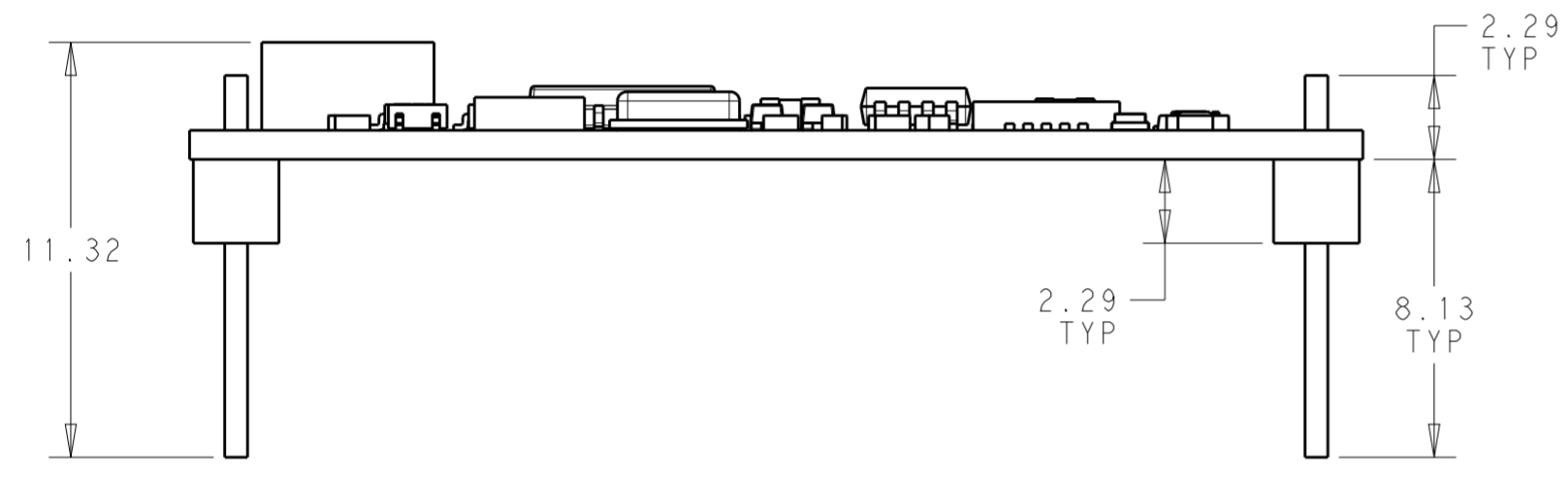
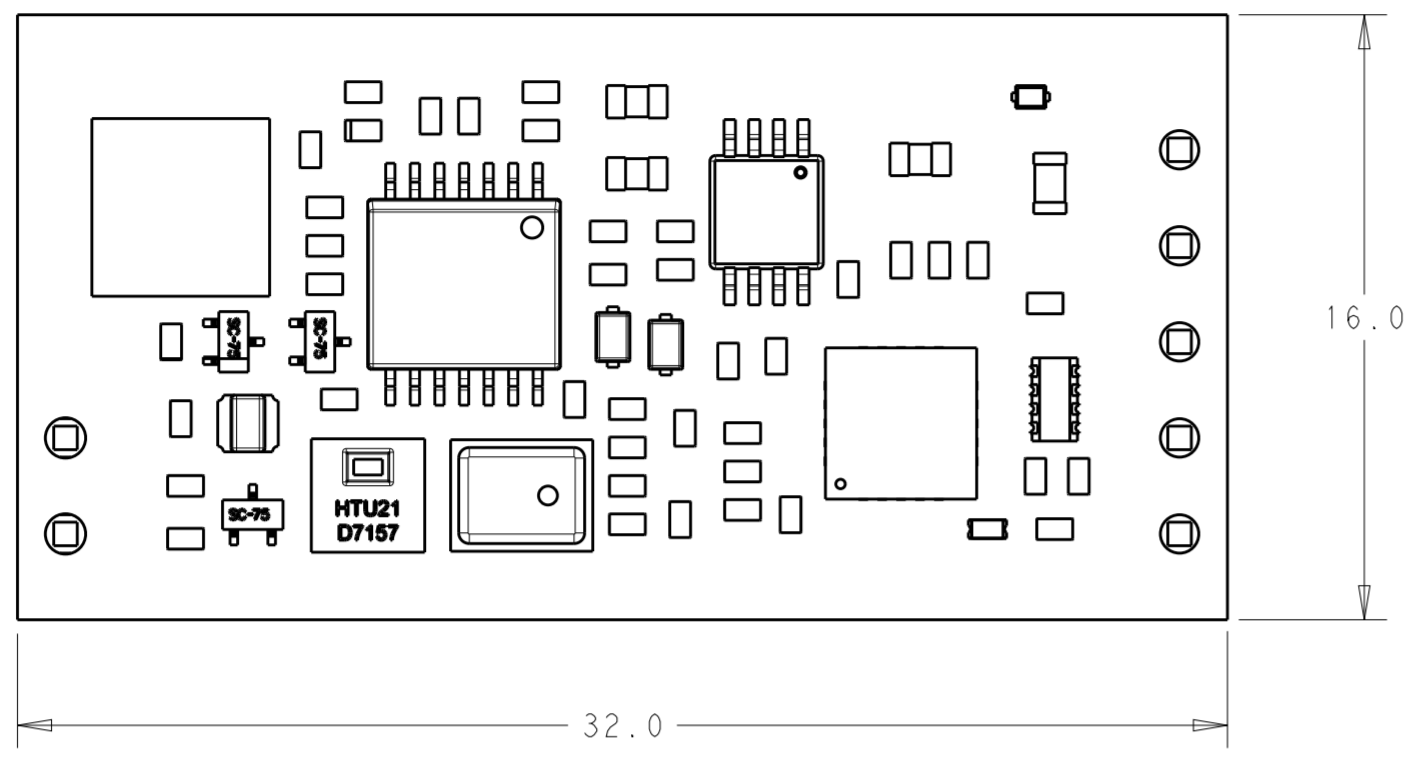


|                            |     |             |
|----------------------------|-----|-------------|
| W/MICROPHONE, W/O HEADER   | A   | 1-2314277-2 |
| W/O MICROPHONE, W/O HEADER | A   | 1-2314277-1 |
| W/MICROPHONE, W/HEADER     | A   | 2314277-2   |
| W/O MICROPHONE, W/HEADER   | A   | 2314277-1   |
| COMMENTS                   | REV | PART NO.    |

|  |  |  |                                |   |
|--|--|--|--------------------------------|---|
| THIS DRAWING IS A CONTROLLED DOCUMENT. |  | DWN<br>J. SHAFFER<br>10MAR2017         | TE Connectivity                |   |
|  |  | CHK<br>C. GINGRICH<br>10MAR2017        |                                |   |
| DIMENSIONS:<br>mm                      |  | TOLERANCES UNLESS OTHERWISE SPECIFIED: |                                | NAME<br>AMBIMATE, MSM4 SENSOR MODULE,<br>THRU HOLE - PIN HEADER |
|  |  | 0 PLC ±                                | PRODUCT SPEC<br>108-133092     | SIZE<br>A2  |
|  |  | 1 PLC ±0.4                             | APPLICATION SPEC<br>114-133092 | CAGE CODE<br>-  |
|  |  | 2 PLC ±0.25                            | WEIGHT<br>-                    | DRAWING NO<br>G-2314277   |
|  |  | 3 PLC ±                                | CUSTOMER DRAWING               | RESTRICTED TO<br>-  |
|  |  | 4 PLC ±                                | SCALE<br>3:1                   | SHEET<br>1 OF 2   |
|  |  | ANGLES ±                               |                                | REV<br>A2   |
|  |  | FINISH -                               |                                |   |
|  |  | -                                      |                                |   |

THIS DRAWING IS UNPUBLISHED. RELEASED FOR PUBLICATION 20  
 © COPYRIGHT 20 BY - ALL RIGHTS RESERVED.

| REVISIONS |     |             |      |      |
|-----------|-----|-------------|------|------|
| P         | LTR | DESCRIPTION | DATE | APVD |
| -         | -   | SEE SHEET 1 | -    | -    |
|           |     |             |      |      |
|           |     |             |      |      |



|  |  |                                 |   |                    |
|--|--|---------------------------------|---|--------------------|
| THIS DRAWING IS A CONTROLLED DOCUMENT. |  | DWN<br>J. SHAFFER<br>10MAR2017  | TE Connectivity   |                    |
|  |  | CHK<br>C. GINGRICH<br>10MAR2017 |   |                    |
| DIMENSIONS:                            |  | APVD<br>-                       | NAME<br>AMBIMATE, MSM4 SENSOR MODULE,<br>THRU HOLE - PIN HEADER |                    |
| mm                                     | TOLERANCES UNLESS OTHERWISE SPECIFIED: | PRODUCT SPEC<br>108-133092      | SIZE<br>A2  | CAGE CODE<br>-     |
|  | 0 PLC ±                                | APPLICATION SPEC<br>114-133092  | DRAWING NO<br>C-2314277   | RESTRICTED TO<br>- |
|  | 1 PLC ±0.4                             | WEIGHT<br>-                     | SCALE<br>3:1  | SHEET<br>2 OF 2    |
|  | 2 PLC ±0.25                            | CUSTOMER DRAWING                | REV<br>A2   |                    |
|  | 3 PLC ±                                |                                 |   |                    |
|  | 4 PLC ±                                |                                 |   |                    |
|  | ANGLES ±                               |                                 |   |                    |
|  | FINISH ±                               |                                 |   |                    |
| MATERIAL                               | -                                      |                                 |   |                    |
|  | -                                      |                                 |   |                    |