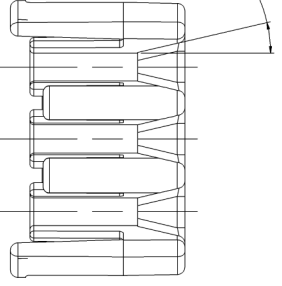
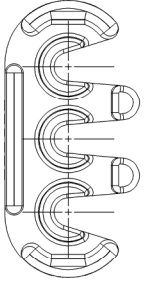
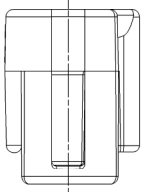
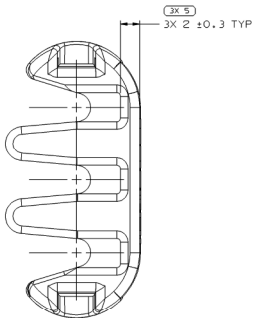
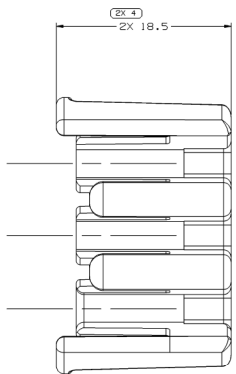
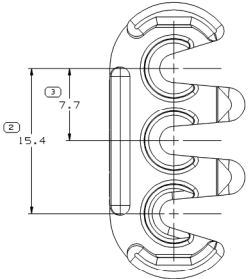
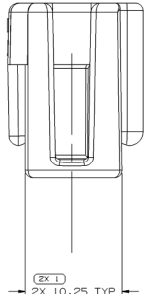
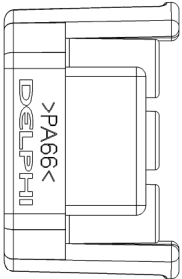


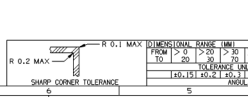
SYMBOL DEFINITION		MISSING SYMBOLS	
<p>A DIMENSION WITHOUT AN INSPECTION REPORT SYMBOL ( ) OR ( ) DOES NOT REQUIRE INSPECTION. IT MAY BE CONTROLLED ON THE INDIVIDUAL COMPONENT DRAWING.</p> <p>( ) INDICATES THE DIMENSION IS SHOWN ON THE PART DRAWING AND THE TOOL MUST BE QUALIFIED AT 80% OF THE TOLERANCE SHOWN UNLESS SUPERSEDED BY A "TBT".</p>	<p>TOTAL NO OF INSPECTIONS REQUIRED</p> <p>LAST NO. USED</p>	15	6

DWO STATUS				REVISION HISTORY			
DATE	STG	REV	NVP	CHG	ZONE	DESCRIPTION	AUTH
24JSE02	R	05	-	-	-	CREATED P/D, ADDED OPTIONAL LOGO & MAT'L RECYCLING CODE NOTES AND MAT'L SPEC WAS R0067548 P&G BLK	228956
24JAO3	R	05	AA	-	-	CREATED OPTIONAL CONSTRUCTION AND REVISED GRAPHICS	275467
23JNO4	R	05	AB	-	-	ADDED OPTIONAL CONSTRUCTION VIEWS	256127



- NOTES
- UNLESS OTHERWISE SPECIFIED AND/OR INDICATED: DIMENSIONS ARE TO FACE OF VIEW SHOWN AND AUTOMATICALLY ROUNDED BY COMPUTER FOR INSPECTION (SEE MATH MODEL FOR PRECISE DIMENSIONS). FOR ALL OTHER DIMENSIONS NOT SHOWN BUT REQUIRED FOR TOOL BUILD, SEE MATH MODEL FOR PRECISE TOOL PATH DATA.
  - MATERIAL RECYCLING CODE PER ISO 11469. (2,3)X(10.1) CHARACTERS AS SHOWN TO BE LOCATED ON ANY EXTERIOR SURFACE.
  - MATING COMPONENTS OR EQUIVALENT: CONNECTORS 12034146 & 12040977.
  - (2,3)X(10.1) DELPHI CORPORATE BRAND TO BE LOCATED ON ANY EXTERIOR SURFACE, PREFERABLY VISIBLE AT FINAL ASSEMBLY. OPTIONAL CONSTRUCTION TO BE "PED".

OPTIONAL CONSTRUCTION



DWO TYPE		PART DRAWING	
STYLE	2:627	SYSTEM CODE	D
VOLUME (ON)	5900	UNLESS OTHERWISE SPECIFIED	
ROUFINI	THIS DOCUMENT IS IN ACCORDANCE WITH ASME Y14.5M-1994 TOLERANCE PRACTICES AND THE DIMENSIONS OF THE DRAWING AND RELATED DRAWING WITH REF. TABLE # INSPECT FORM #1 ARE USED FOR ALL DIMENSIONS UNLESS OTHERWISE SPECIFIED. DIMENSIONS ARE TO FACE UNLESS OTHERWISE SPECIFIED. DIMENSIONS ARE IN MILLIMETERS UNLESS OTHERWISE SPECIFIED.		
REFERENCE	THIRD ANGLE PROJECTION		
DO NOT SCALE	USE MATH DATA		

**DELPHI**  
DELPHI PACKAGED ELECTRIC SYSTEMS  
ANNON, OH

DATE	
DR	A. FLORES
APP'D	E. VAZQUEZ
APP'D	R. CORZAS
APP'D	

SUBSTITUTES OF CONSTRUCTION ARE NOTIFIED CONTENT PER DELPHI (094900)

MATERIAL: M3592001 PA66 HS 1M BLK

DRAWING NAME: LOCK TPA M/P 280 3 BLK

DRAWING NUMBER: 12034145

SIZE: A0  
SCALE: 5:1  
FRAME NO: 1  
SHEET NO: 1  
OF: 1  
REV: R  
BY: TUP  
DATE: 05/14