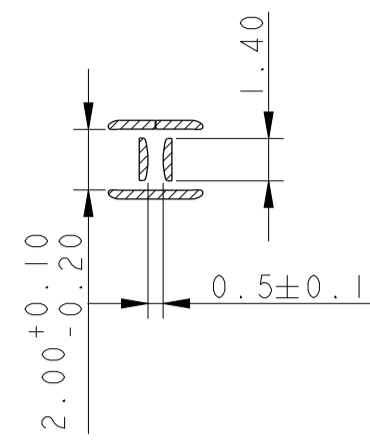
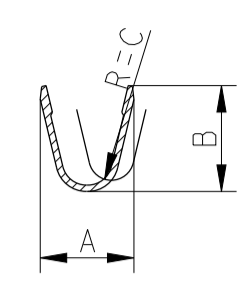


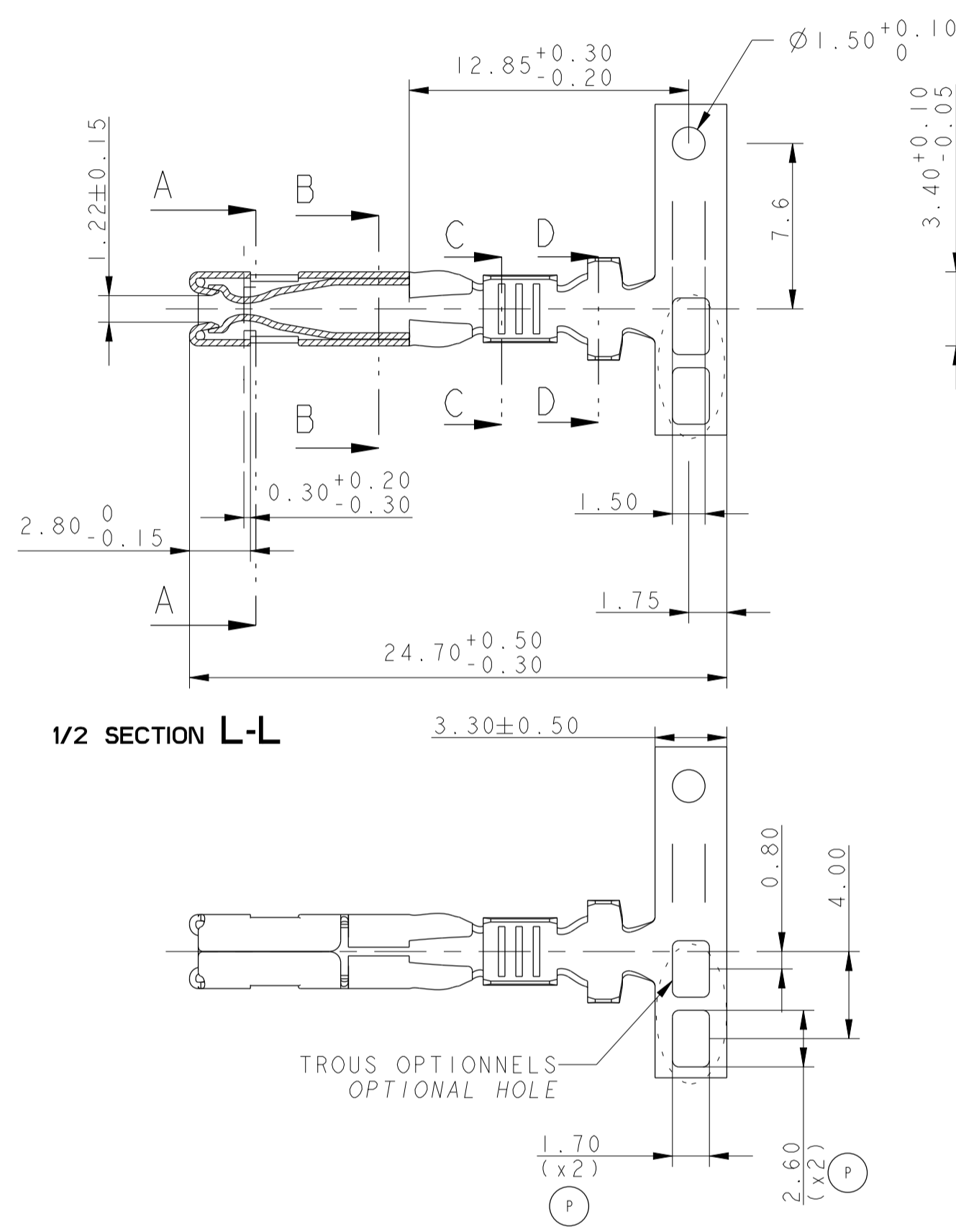
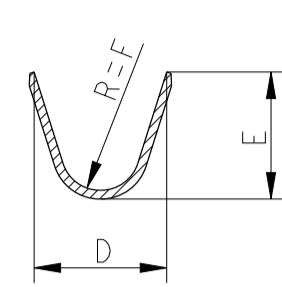
SECTION A-A



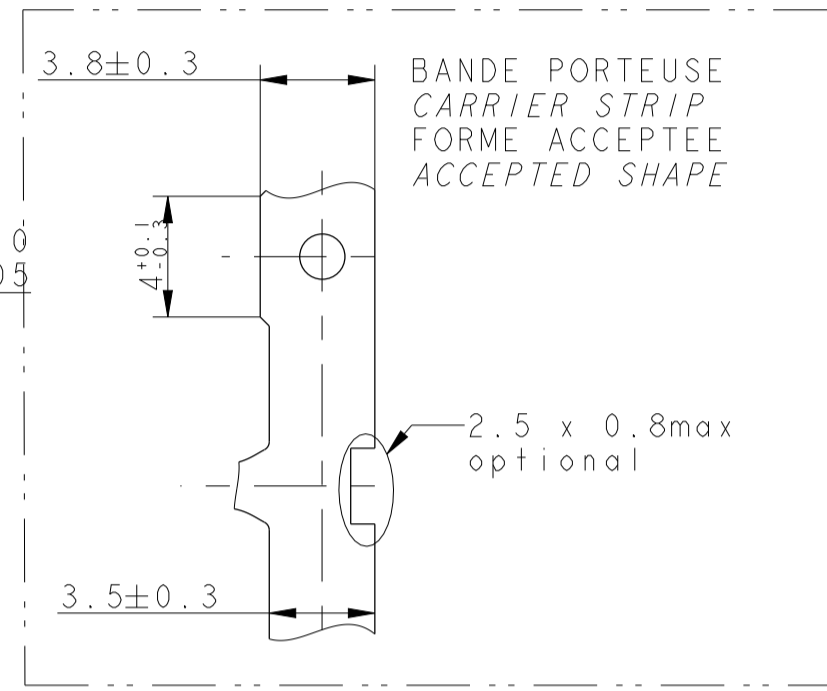
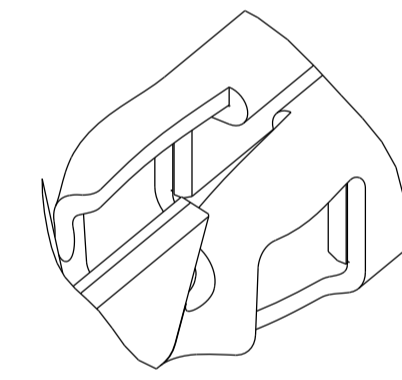
SECTION C-C



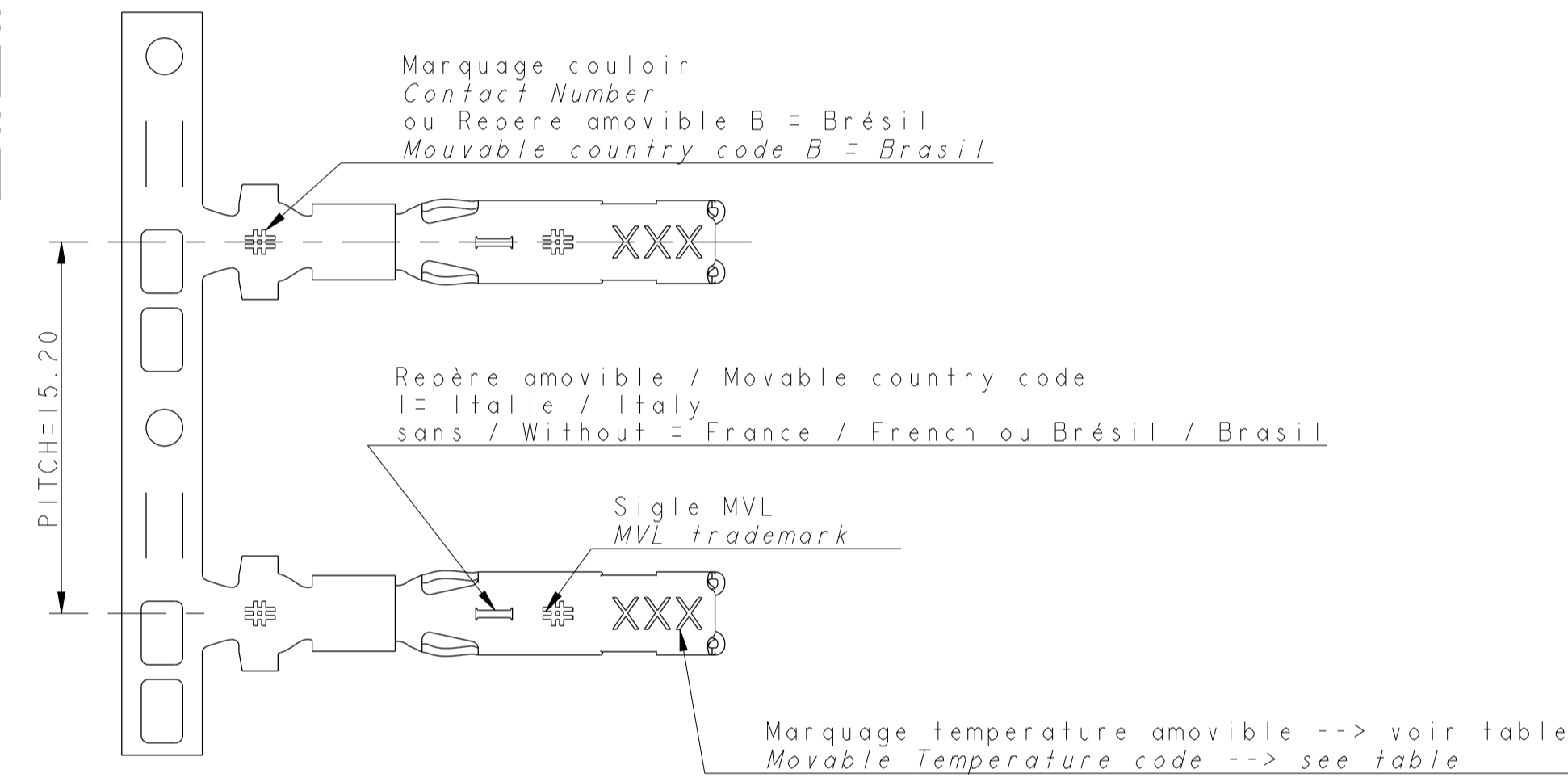
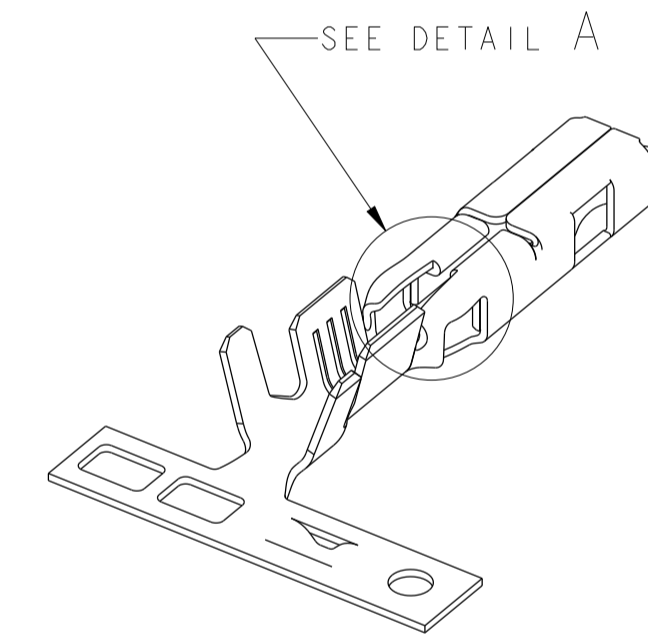
SECTION D-D



DETAIL A SCALE 10:1



SECTION B-B



PITCH=15.20

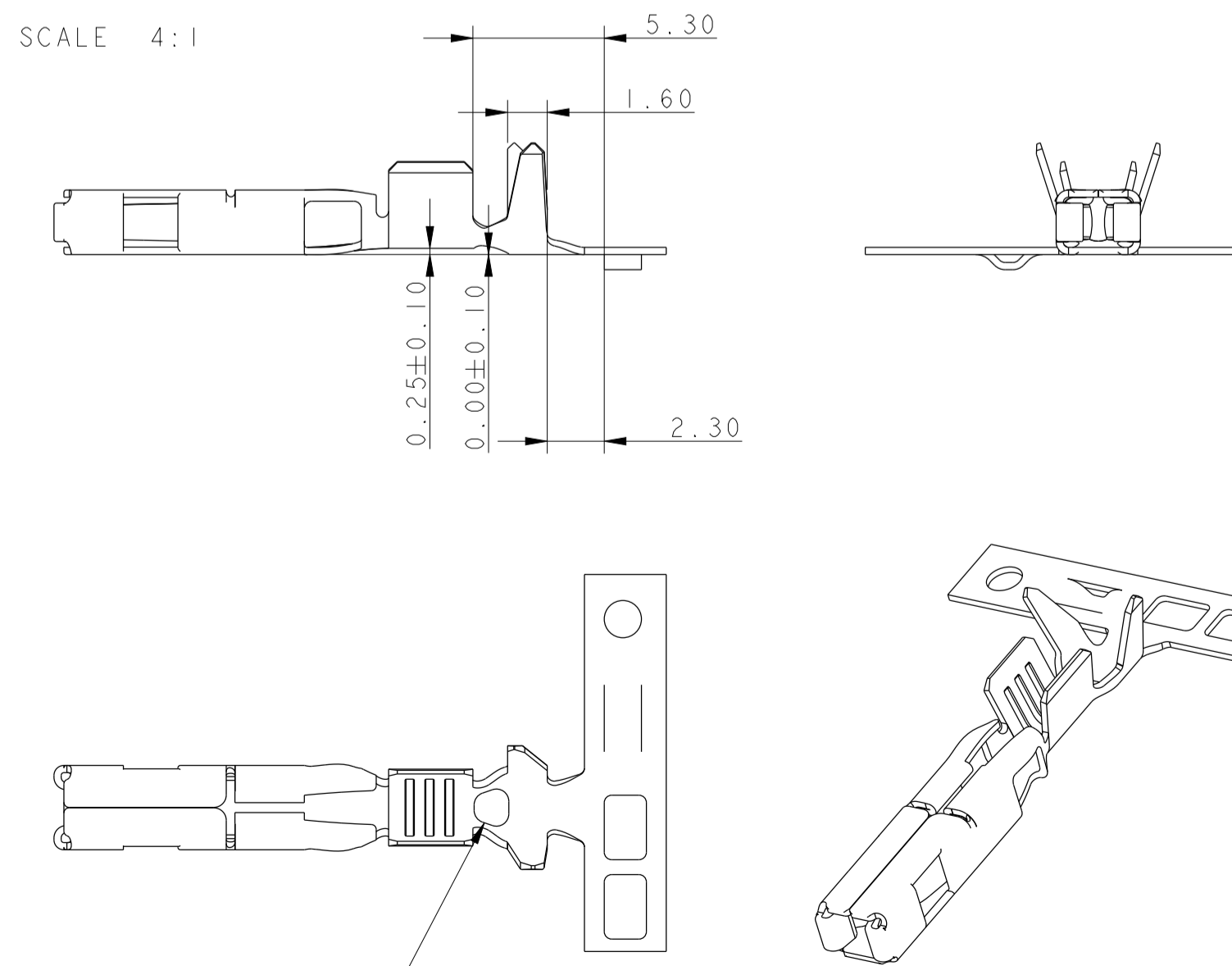
Etat / State	RECOUVREMENT OVERLAPING		JUF / SWS		RECOUVREMENT OVERLAPING		JUF / SWS		FRETTAGE JUXTAPOSE SIDE BY SIDE INSULATION		RECOUVREMENT OVERLAPING		JUF / SWS		RECOUVREMENT OVERLAPING		JUF / SWS		Matiere / Material	Temp Marquage / Class Mark		
	P/N	Rev.	P/N	Rev.	P/N	Rev.	P/N	Rev.	P/N	Rev.	P/N	Rev.	P/N	Rev.	P/N	Rev.	P/N	Rev.				
Pré-étamé / Pre-tinned	MVL	211 CC 2 S 0150 P	G				211 CC 2 S 1150 P	G					211 CC 2 S 4150 P	G			211 CC 2 S 2150 P	G		Cu Zn 15	85°	NO
Pré-pisté / Pre-tracked	MVL	211 CC 2 S 0160 P	G	211 CC 2 S 0161 P	G	211 CC 2 S 1160 P	G	211 CC 2 S 1161 P	G	F562500	G	211 CC 2 S 4160 P	G	211 CC 2 S 4161 P	G	211 CC 2 S 2160 P	G	211 CC 2 S 2161 P	G	Cu Fe 2P	125°	125
	DELPHI	13625048	O1	13761649	O1	10863984	O1	13761154	O1		O1	10865182	O1	13761651	O1	10863985	O1	13761648	O1	Cu Cr Ag Fe Ti Si	125°	150
Pré-pisté / Pre-tracked	MVL	211 CC 2 S 0460 P	G			211 CC 2 S 1460 P	G	211 CC 2 S 1461 P	G	F962500	G	211 CC 2 S 4460 P	G			211 CC 2 S 2460 P	G			Cu Fe 2P	125°	125
	DELPHI	13764603	O1			13764604	O1					33500701	O1			13764602	O1					
Section Gauge	0.22				0.35 to 0.70						0.75 to 1.3				1.35 to 2							
Isolant / Insulation	1.15 to 1.35				1.25 to 2.1						1.6 to 2.6				2.1 to 2.8							
A	1.53				2.6						2.88				3.1							
B	1.87				2.2						2.86				3.5							
R=C	0.33				0.75						0.75				0.75							
D ± 0.30	2.87		4.7		4.2		4.7		3.00		4.7		5		4.7		5					
E	3.05		4.15		3.3		4.15		3.00		4.2		4.5		4.2		4.5					
R=F	0.68		1.35		1.3		1.35		0.80		1.3		1.35		1.3		1.35					
Poids sans bande porteuse / Weight without strip carrier	0.00043kg		0.00042kg		0.00045kg		0.00044kg		0.00042kg		0.00046kg		0.00045kg		0.00047kg		0.00046kg					

PROTECTION OR / GOLD PLATING

Reference	Area	Ni		Sn (µm)	Thickness Au	
		B	C		nominal	min
211 CC 2S X 4 60	B2 (INT)	1µMIN	0.1µMAX	1.52µ	1.27µ	
211 CC 2S X 4 61	Contact point	2µMAX				

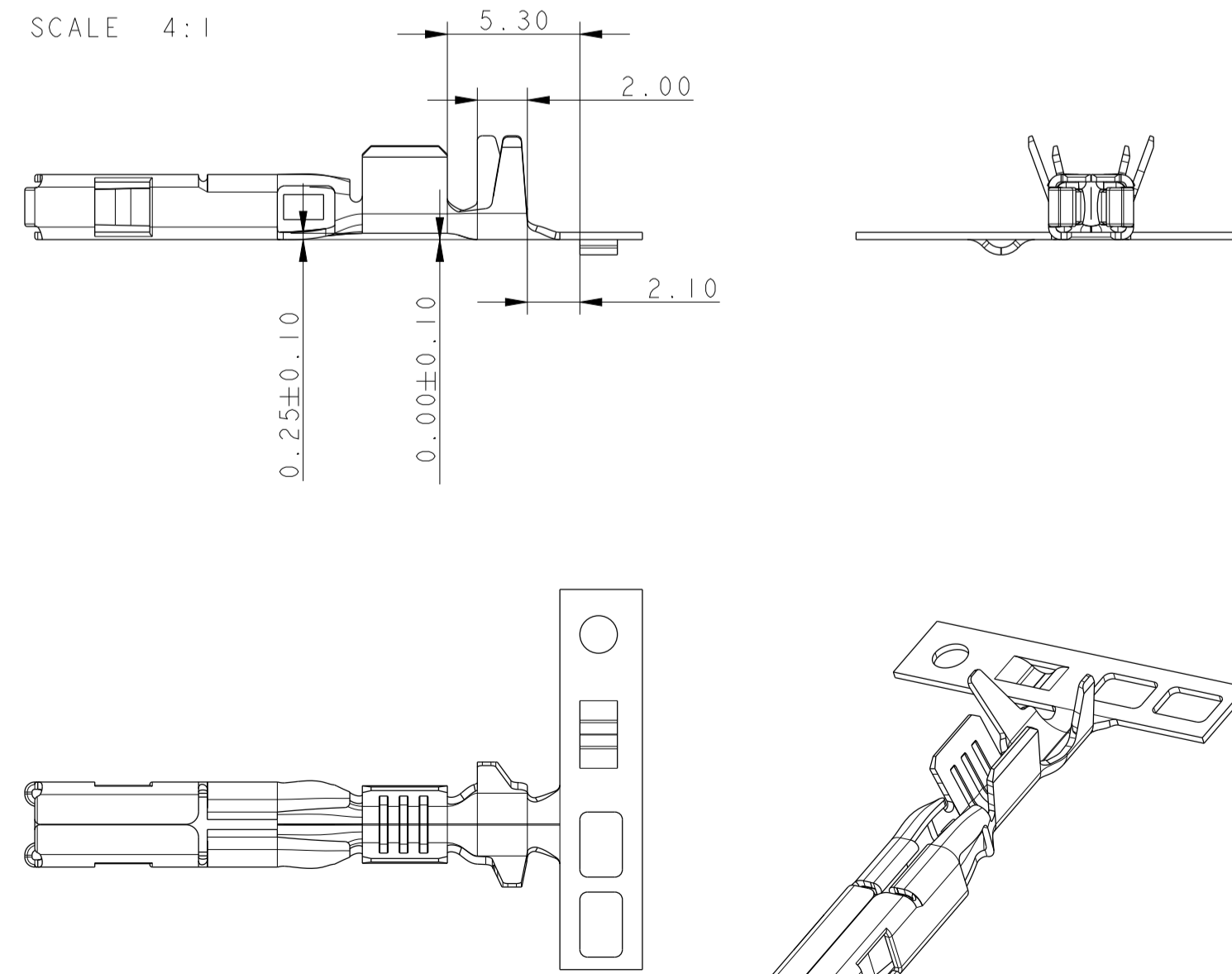
ZONE ET DIMENSIONS VALABLES POUR TOUTES REFERENCES
AREA AND DIMENSIONS ARE VALID FOR ALL REFERENCES

JUF / SWS

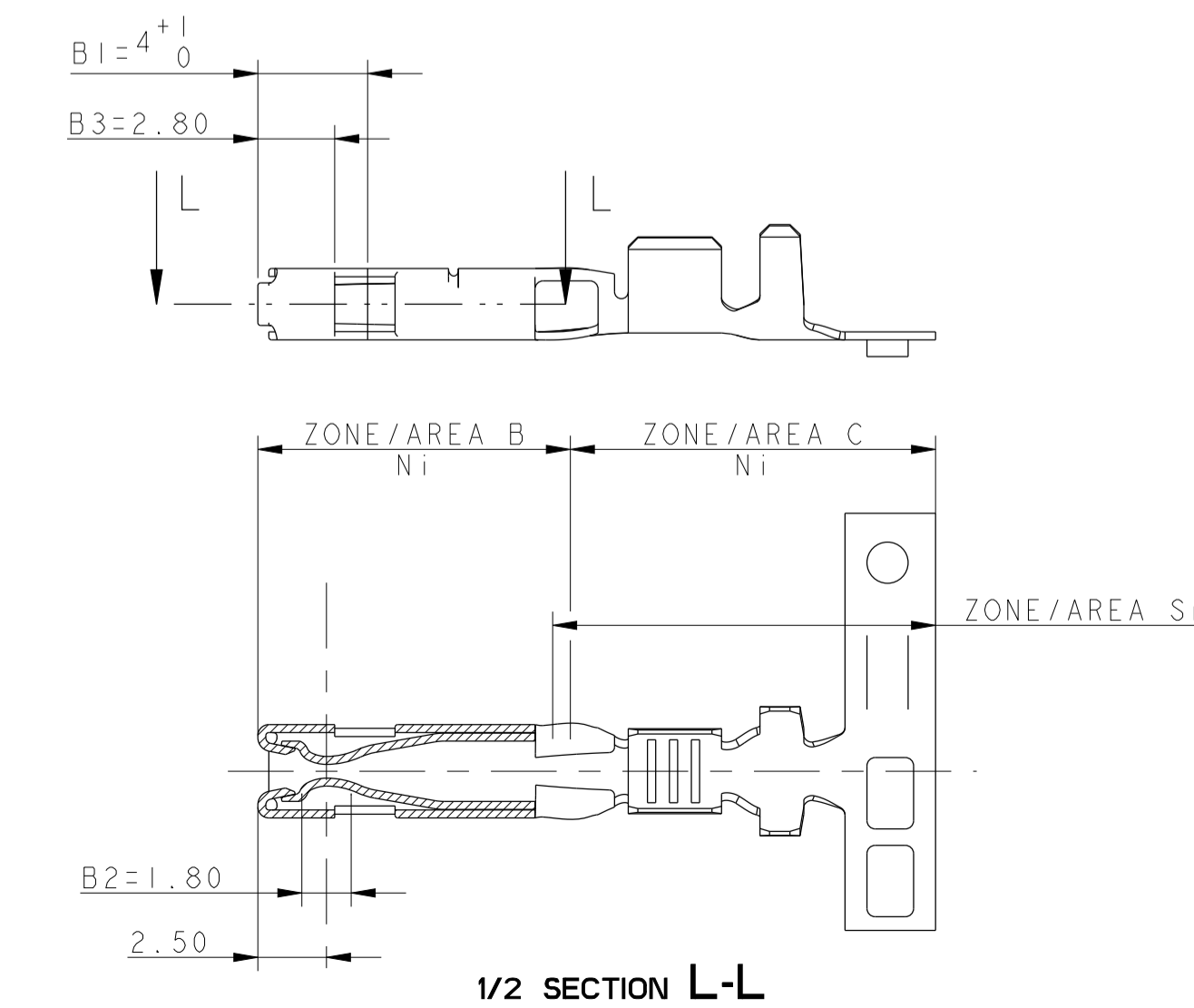


SCALE 4:1

FRETTAGE JUXTAPOSE SIDE BY SIDE INSULATION



SCALE 4:1



1/2 SECTION L-L

PAS DE TROU POUR SECTION 0.22
NO HOLE FOR SECTION 0.22

13-01079	SHEET 2	MODIFY CHAMFER 0.35; WIRE: COLUMN L5 : SYM WIRE PUNCH MODIFY CARRIER STRIP HOLE; MODIFY Ø INSULATION ADD DELPHI P/N
12-00279		Add side by side insulation on new crimping range (sheet 3)
ECN11-00144-1		MS-15 Add side by side insulation E13-E15 Add optional hole on carrier strip
09 104		Part revision level G instead of F Update transition area shape

ECN-NO. / NUMERO ECN	POSITION	CHANGE DESCRIPTION / MODIFICATION

PROJETS SPEC. / SPECIF. PRODUIT: ... APPLICATION SPEC. / SPECIF. APPLICATION: ...
 TOLERANCES / TOLERANCES: ±0.2 ±0.2
 MATERIELE / MATERIAL: SEE TABLE
 COULEUR / COLOUR: ...
 ISO PROJECTION / DIMENSIONS EN MILLIMETRES: ...
 DATE / DATE: ...
 NOM / NAME: ...
 TITRE / DESIGNATION: 15 x 08 FEMALE TERMINAL
 REF. PLAN: 211FT0463
 DELPHI ELECTRICAL/ELECTRONIC ARCHITECTURE
 DIMENSIONS IN MILLIMETERS
 DIMENSIONS EN MILLIMETRES
 APPROVAL LEVEL / NIVEAU D'APPROBATION: ...
 SHEET / FEUILLE: ...
 REV. / REV.: ...
 SCALE / ECHELLE: 1:1

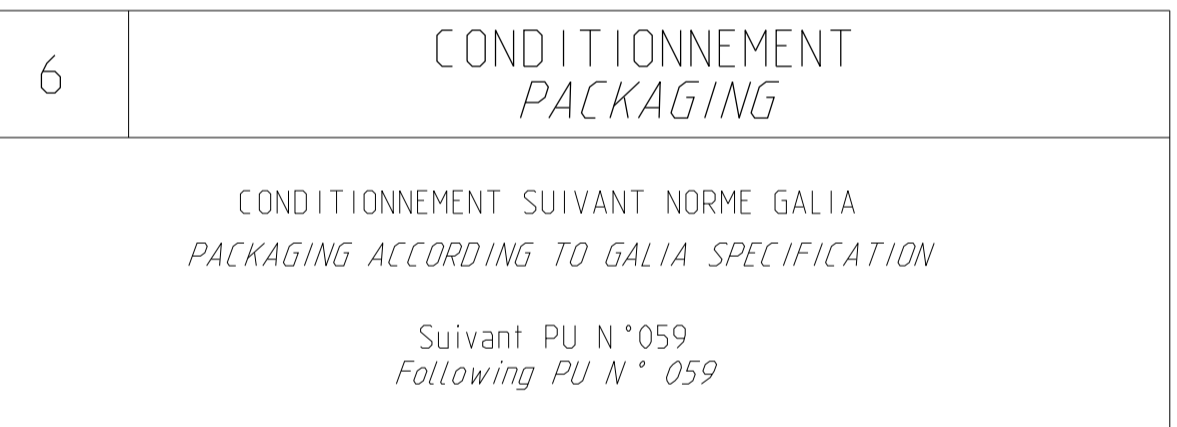
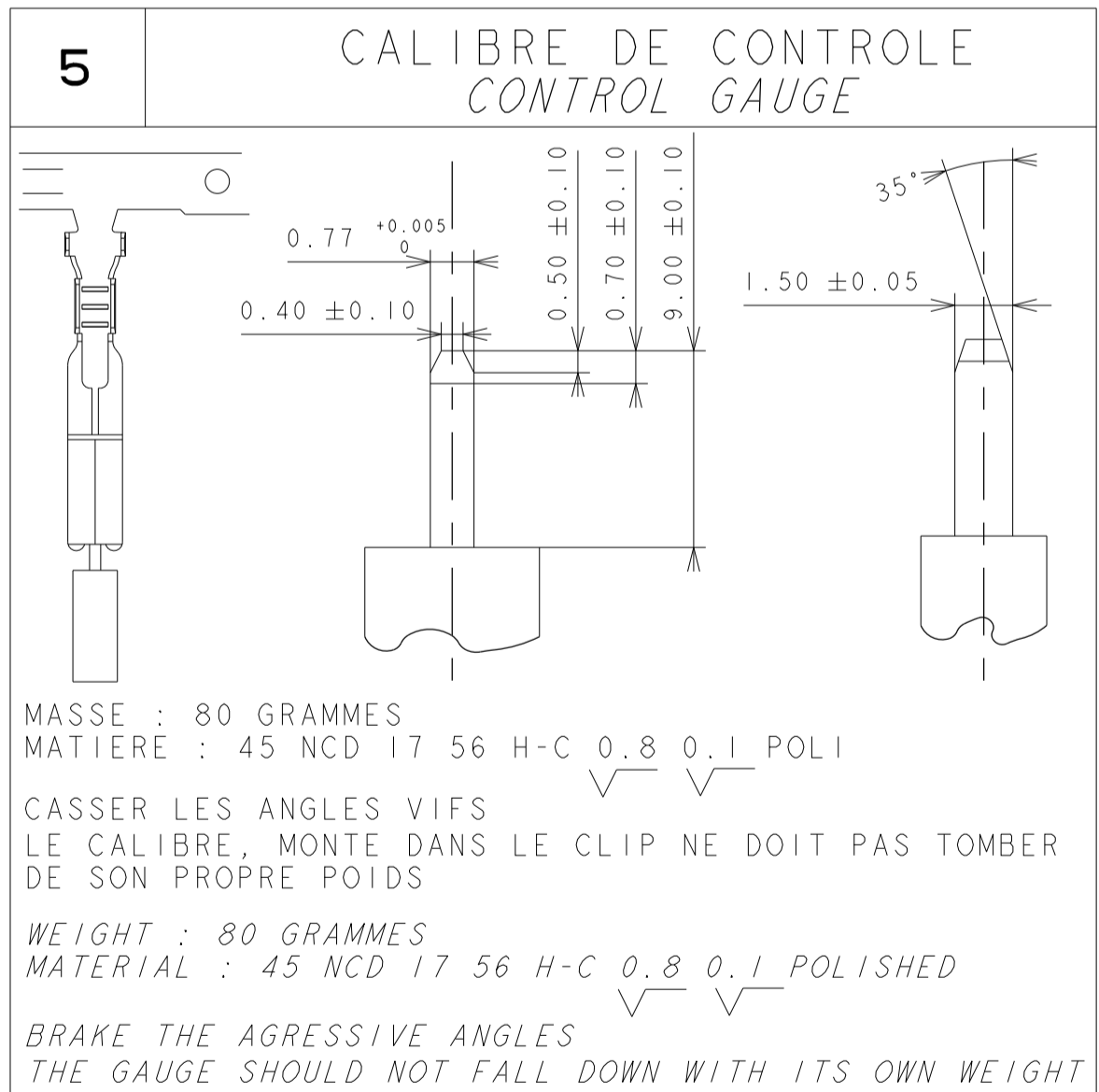
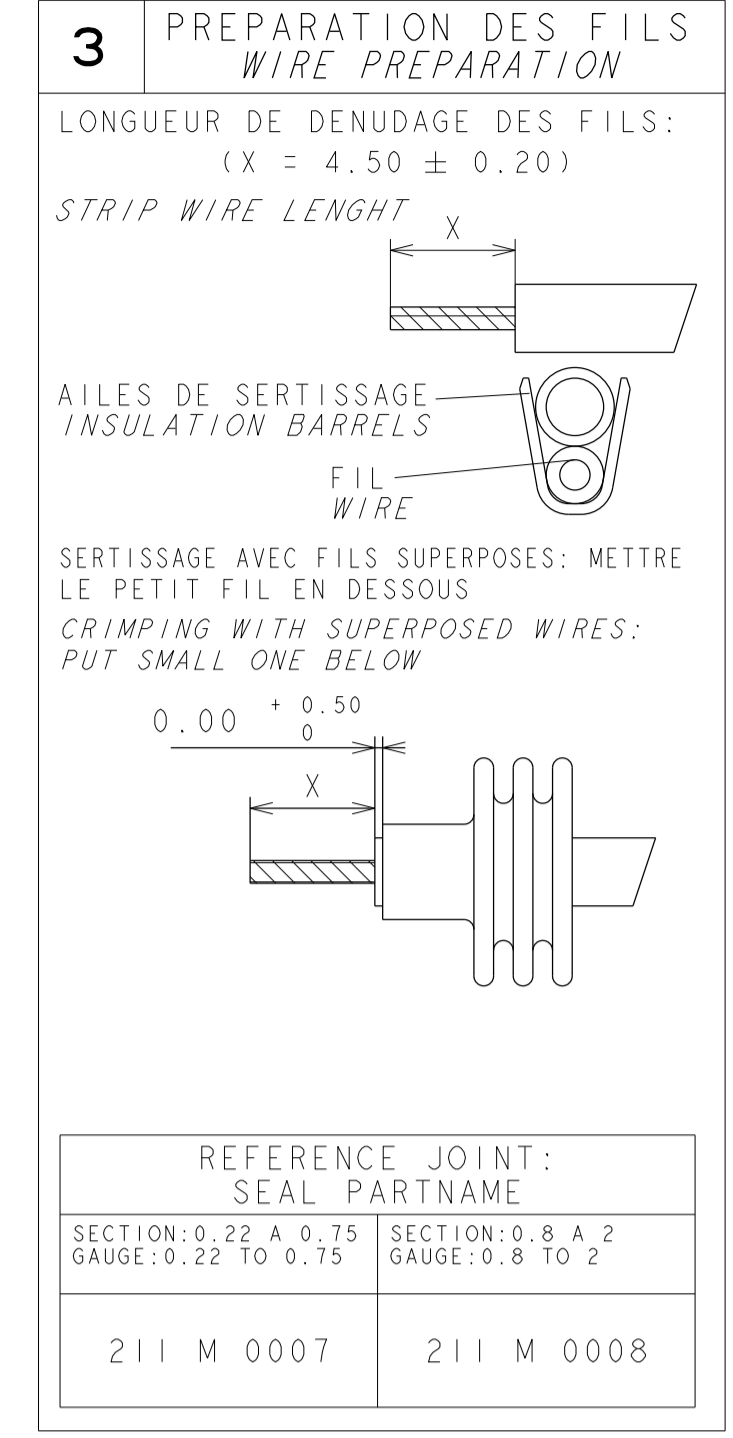
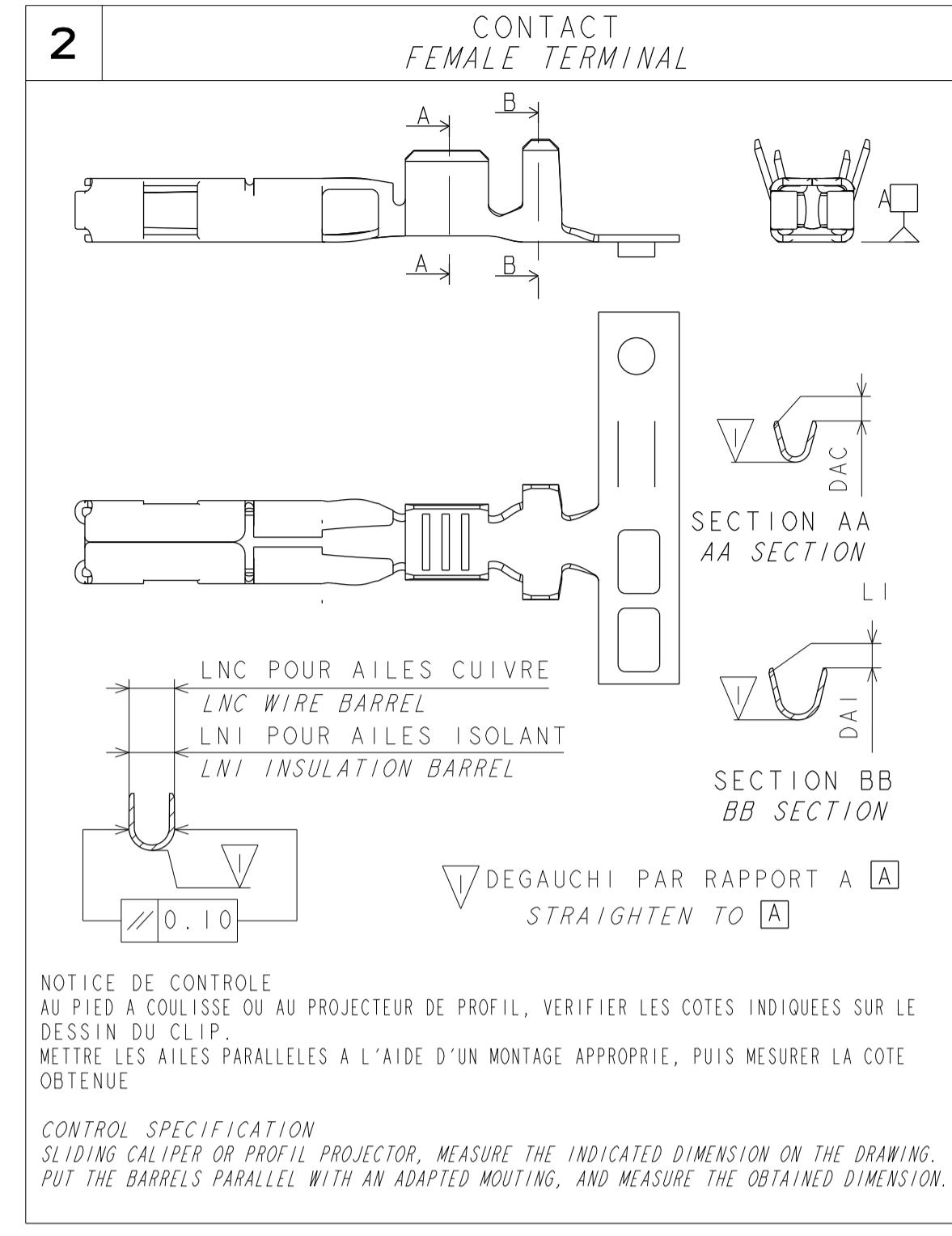
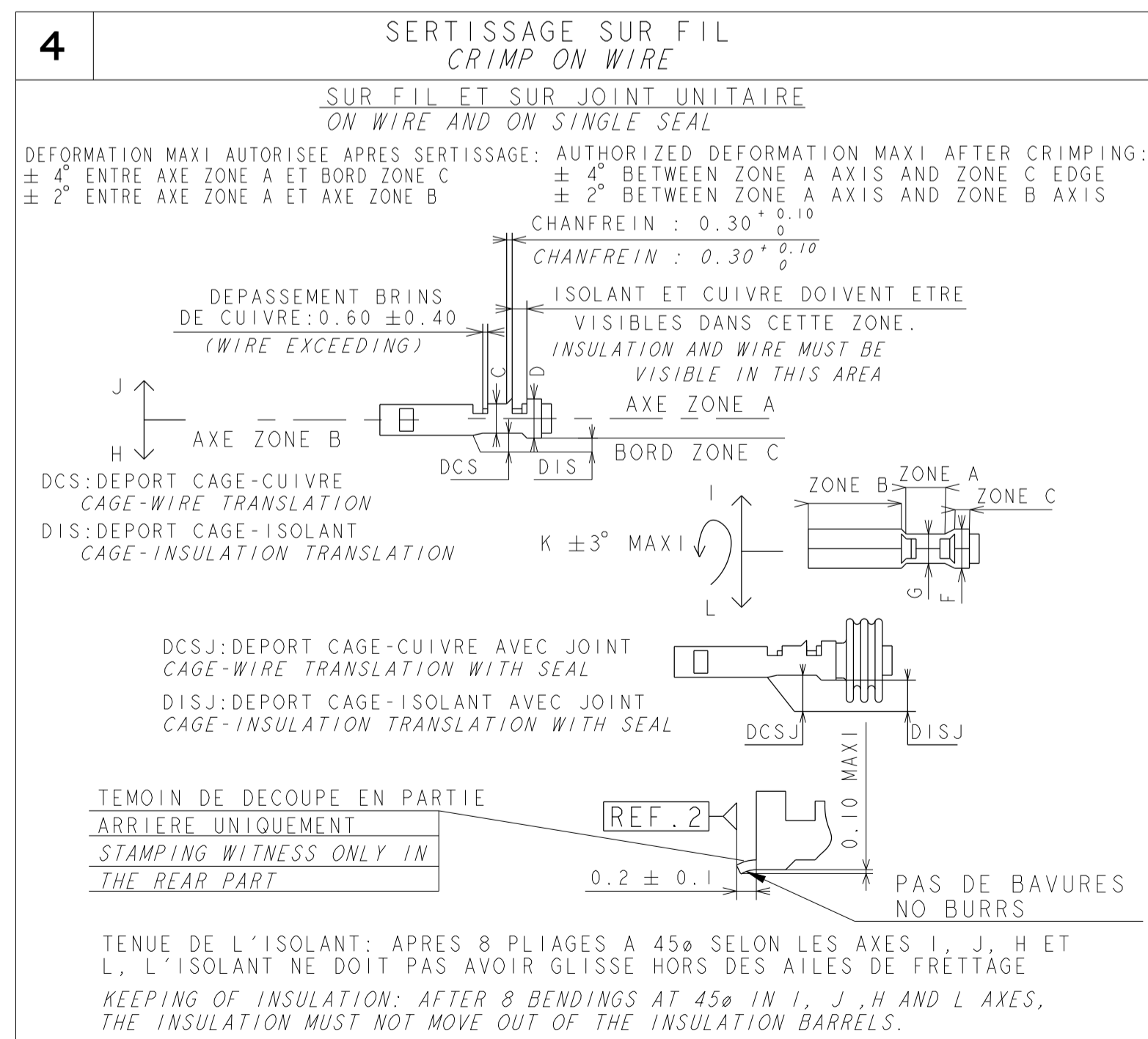
NOUVELLES GAMMES DE SERTISSAGE

NEW CRIMPING RANGE

PARAMETRES DE SERTISSAGE
CRIMP PARAMETERS

SECTION GAUGE	CONTACT FEMALE TERMINAL						SERTISSAGE CUIVRE WIRE BARREL				FRETTAGE ISOLANT INSULATION BARREL						
	DAC MAXI	DAI MAXI	LNC ± 0.25	LNI ± 0.25	DCS ± 0.10	DCSJ ± 0.10	THEORIQUE THEORETICAL	REELLE REAL	LARGEUR WIDTH G ± 0.04	HAUTEUR HEIGHT C ± 0.04	φ EQU EQU φ	PAR RECOUVREMENT WITH OVERLAPPING		JUXTAPOSE SIDE BY SIDE		AVEC JUF WITH SWS	
												(LARGEUR) (WIDTH)	(HAUTEUR) (HEIGHT)	(LARGEUR) (WIDTH)	(HAUTEUR) (HEIGHT)	(LARGEUR) (WIDTH)	(HAUTEUR) (HEIGHT)
0.22mm²	0.25	0.25	1.25	2.00	0.35	0.35	0.22	0.22	1.42	0.88	1.20	(2.03)	(1.75)			(3.03)	(2.50)
0.35mm² To 0.70mm²	0.25	0.25	2.10	3.20	0.35	0.35	0.35 0.35 1A 0.50 0.35 + 0.35	0.32 0.32 0.49 0.64	1.65 1.65 1.65 1.64	1.09 1.09 1.17 1.24	1.30 1.50 1.50 2.03	(2.58) (2.56) (2.58) (2.60)	(2.02) (2.05) (2.05) (2.31)	(2.03) (2.09) (2.09) (2.13)	(1.72) (1.83) (1.83) (2.20)	(3.06) (3.06) (3.11) (3.11)	(2.58) (2.65) (2.71) (2.71)
0.75mm² To 1.30mm²	0.25	0.25	2.10	3.20	0.35	0.35	0.75 0.85 1.00 0.35 + 0.50 0.35 + 0.75 0.35 + 1.00 0.50 + 0.50 0.50 + 0.75	0.72 0.86 0.93 0.81 1.04 1.25 0.98 1.21	1.90 1.91 1.91 1.91 1.92 1.92 1.91 1.92	1.31 1.37 1.40 1.34 1.44 1.53 1.42 1.51	1.79 1.80 1.86 2.11 2.31 2.43 2.19 2.38	(3.00) (3.01) (3.02) (3.03) (3.05) (3.05) (3.04) (3.05)	(2.20) (2.23) (2.30) (2.45) (2.64) (2.65) (2.60) (2.65)	(2.13) (2.20) (2.13) (2.20)	(3.49) (3.49) (3.51) (3.49) (3.49) (3.80) (3.80)	(2.97) (2.97) (3.00) (2.97) (2.97) (3.27) (3.27)	
1.35mm² To 2.0mm²	0.25	0.25	2.10	3.20	0.35	0.35	1.40 1.50 2.00 0.50 + 1.00 0.75 + 0.75 1.00 + 1.00	1.33 1.53 1.82 1.42 1.44 1.86	2.36 2.36 2.36 2.36 2.36 2.36	1.52 1.59 1.69 1.55 1.55 1.70	2.30 2.20 2.44 2.50 2.56 2.79	(3.22) (3.20) (3.26) (3.24) (3.25) (3.25)	(2.54) (2.50) (2.65) (2.62) (2.65) (2.65)	(3.75) (3.69) (3.80) (3.80)	(3.27) (3.20) (3.35) (3.35)		

(valeur): UNIQUEMENT POUR INFORMATION (value) : FOR INFORMATION ONLY



ECN-NO. NUMERO ECR	POSITION	CHANGE DESCRIPTION MODIFICATION
211FT0463		

PROJET SPEC.	PROJET SPEC.	APPLICATION SPEC.	COPYRIGHT
DELPHI	DELPHI	DELPHI	DELPHI

DATE	NOM	TITRE	DESIGNATION
2008-07-29	HERMANGUEZ, S.	15 x 08 FEMALE TERMINAL	
2010-07-17	L. DOMERGUE		
2010-07-17	S. LACOTE		
2010-07-17	P. BARRA		

STATUT	STATUT	STATUT
PROJET	PROJET	PROJET

REV.	IND.	APPROVAL LEVEL
3	P	3

DRAWING NUMBER: 211FT0463
SERIAL RELEASED
See Table