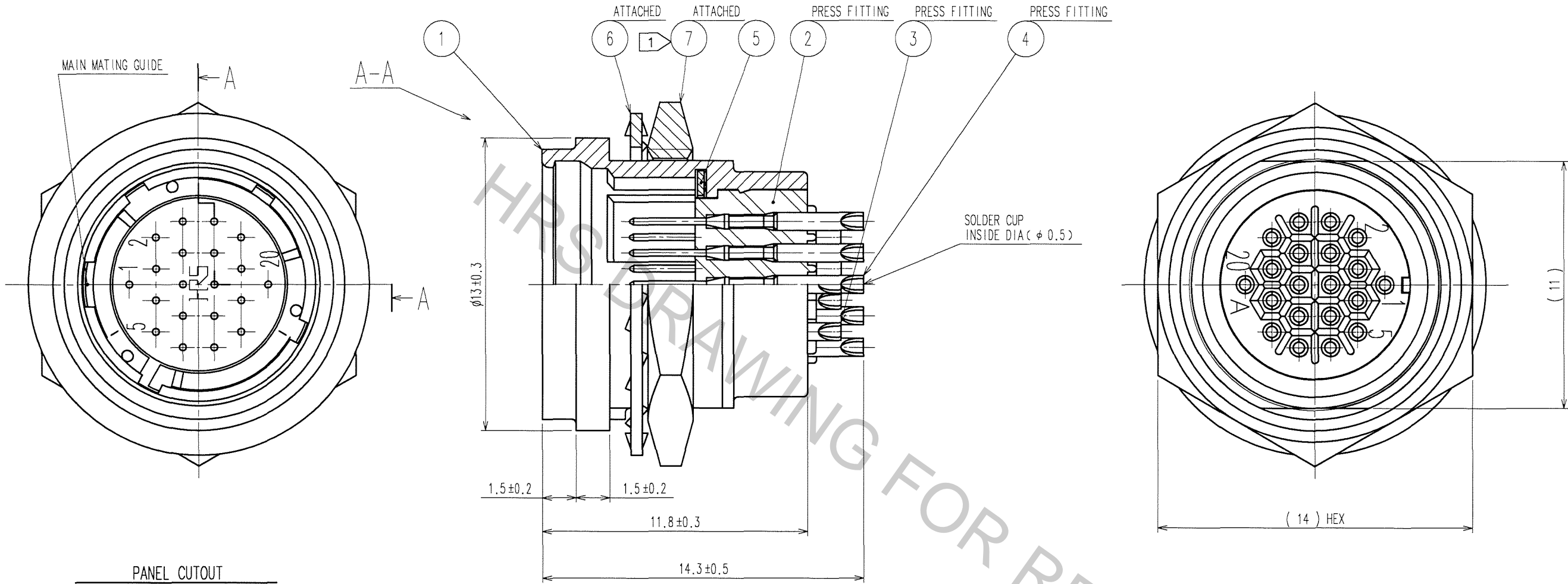
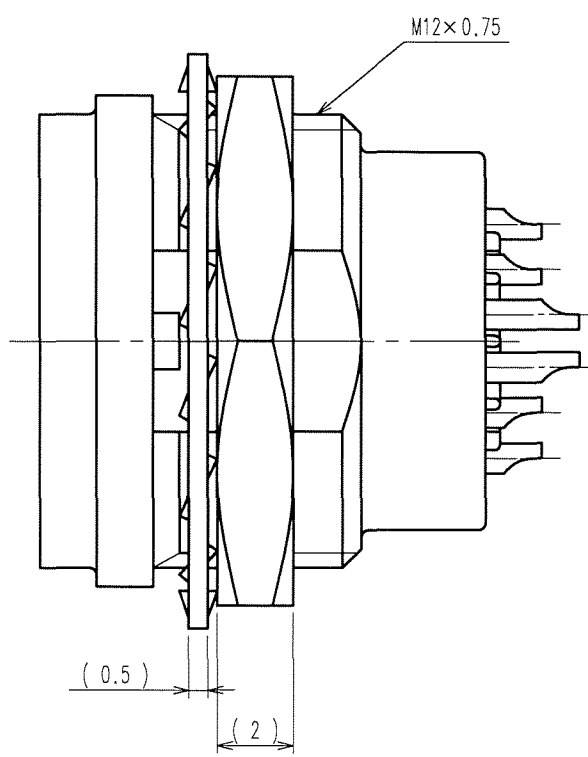
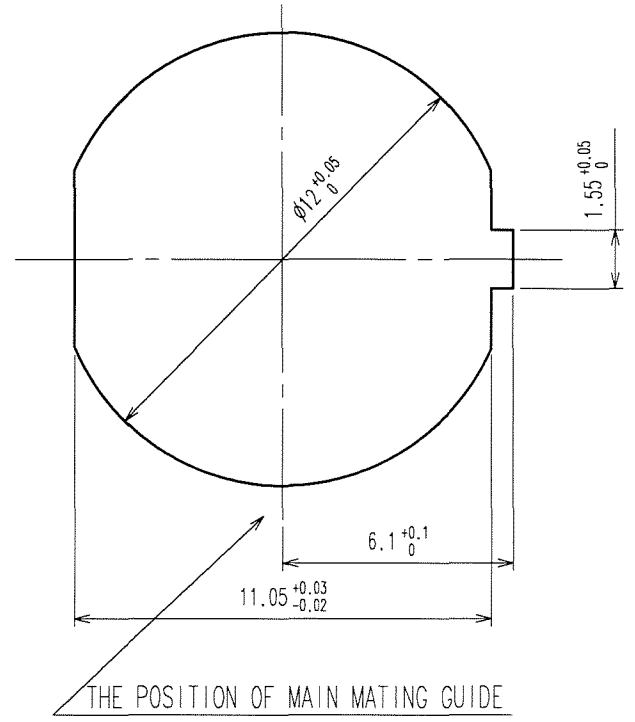


Sep.1.2018 Copyright 2018 HIROSE ELECTRIC CO., LTD. All Rights Reserved.  
In case that the application demands a high level of reliability, such as automotive,  
please contact a company representative for further information.

COUNT	DESCRIPTION OF REVISIONS	BY	CHKD	DATE	COUNT	DESCRIPTION OF REVISIONS	BY	CHKD	DATE
1	DIS-C-000585	T.K	E.K	07.07.24					



PANEL CUTOUT  
PANEL THICKNESS : 0.7 TO 2



- NOTES ① THE RECOMMENDED TIGHTENING TORQUE OF REF. No.⑦ TO BE 1.5 N·m.  
COATING WITH LOCTITE 242 MANUFACTURED BY HENKEL JAPAN OR EQUIVALENT IS RECOMMENDED  
TO PREVENT LOOSENESS.  
② OVER PLATING : GOLD 0.2μm min.  
UNDER PLATING : NICKEL 2μm min.

4	PHOSPHOR BRONZE	②	7	BRASS ①	NICKEL PLATING
3	PHOSPHOR BRONZE	②	6	STEEL	ZINC CHROMATIZED (TRIVALENT CHROMIUM)
2	POLYPHENYLENE SULFIDE	(BLACK) 94V-0	5	BERYLLIUM COPPER	NICKEL PLATING
1	ZINC ALLOY	MATTE FINISH NICKEL PLATING			
NO.	MATERIAL	FINISH, REMARKS	NO.	MATERIAL	FINISH, REMARKS
CODE NO.(OLD) CL			DRAWN M.SATO '06 09 27	DESIGNED Y.YAMADA '06 09 28	CHECKED APPROVED M.SATO '06 09 28
SCALE 5 : 1			PART NO. HR25A-9R-20P		
UNITS mm			CODE NO. CL125-0614-7-00		
DRAWING NO. EDC3-115056			1/1		
HRS HIROSE ELECTRIC CO., LTD					