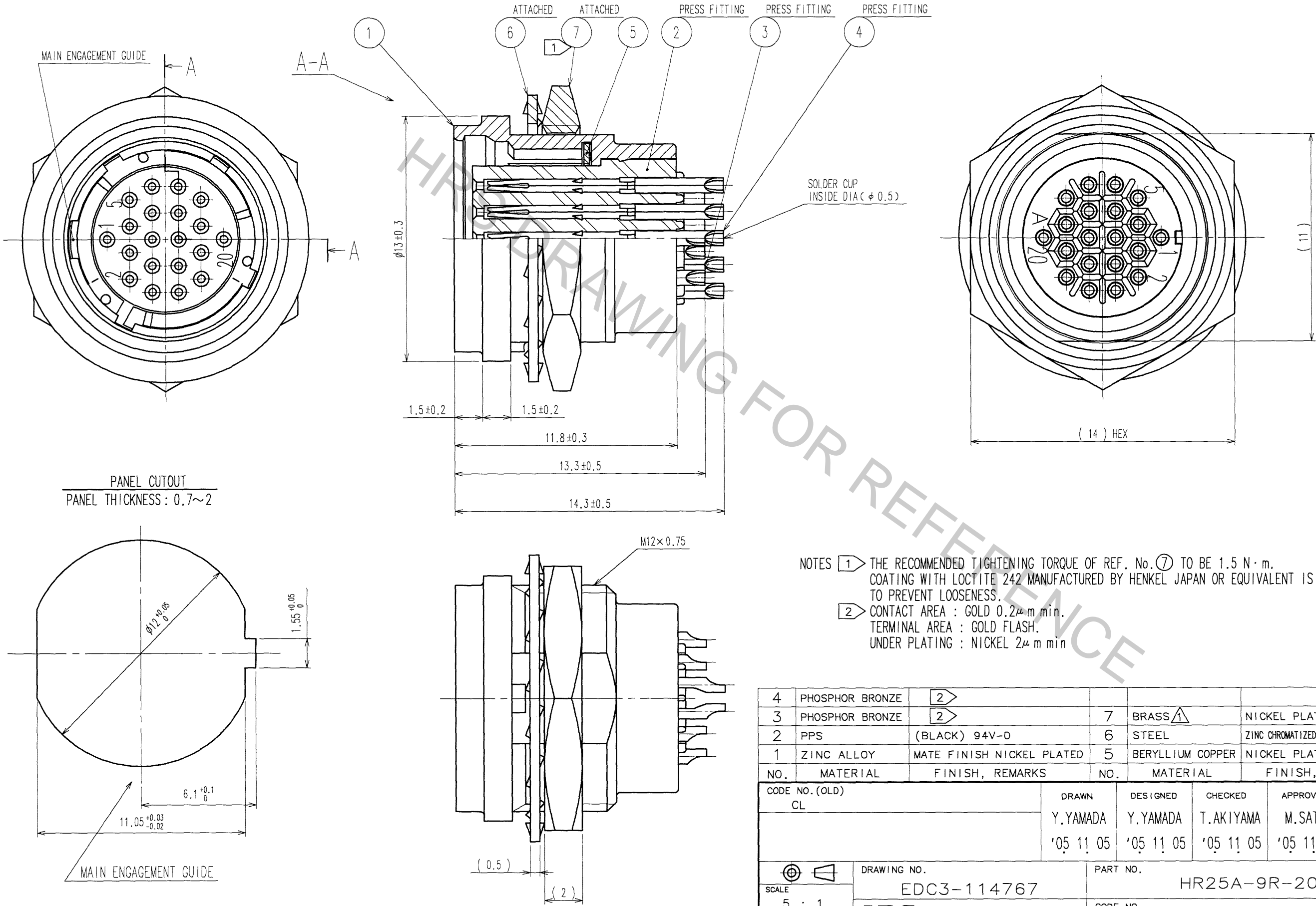


Sep.1.2018 Copyright 2018 HIROSE ELECTRIC CO., LTD. All Rights Reserved.
In case that the application demands a high level of reliability, such as automotive,
please contact a company representative for further information.

COUNT	DESCRIPTION OF REVISIONS	BY	CHKD	DATE	COUNT	DESCRIPTION OF REVISIONS	BY	CHKD	DATE
1	DIS-C-000585	T.K	E.K	07.07.27					



NOTES ① THE RECOMMENDED TIGHTENING TORQUE OF REF. No. ⑦ TO BE 1.5 N·m.
COATING WITH LOCTITE 242 MANUFACTURED BY HENKEL JAPAN OR EQUIVALENT IS RECOMMENDED
TO PREVENT LOOSENESS.
② CONTACT AREA : GOLD 0.2μm min.
TERMINAL AREA : GOLD FLASH.
UNDER PLATING : NICKEL 2μm min

4	PHOSPHOR BRONZE	②			
3	PHOSPHOR BRONZE	②	7	BRASS ①	NICKEL PLATED
2	PPS	(BLACK) 94V-0	6	STEEL	ZINC CHROMATIZED (TRIVALENT CHROMIUM)
1	ZINC ALLOY	MATE FINISH NICKEL PLATED	5	BERYLLIUM COPPER	NICKEL PLATED
NO.	MATERIAL	FINISH, REMARKS	NO.	MATERIAL	FINISH, REMARKS

CODE NO. (OLD) CL	DRAWN Y.YAMADA '05 11 05	DESIGNED Y.YAMADA '05 11 05	CHECKED T.AKIYAMA '05 11 05	APPROVED M.SATO '05 11 05	RELEASED .
----------------------	--------------------------------	-----------------------------------	-----------------------------------	---------------------------------	---------------

SCALE 5 : 1	DRAWING NO. EDC3-114767	PART NO. HR25A-9R-20S
UNITS mm	HIROSE ELECTRIC CO., LTD	CODE NO. CL125-0601-5

TO
R