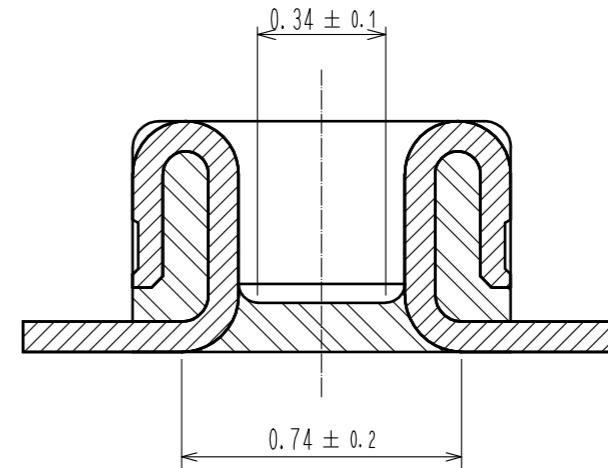
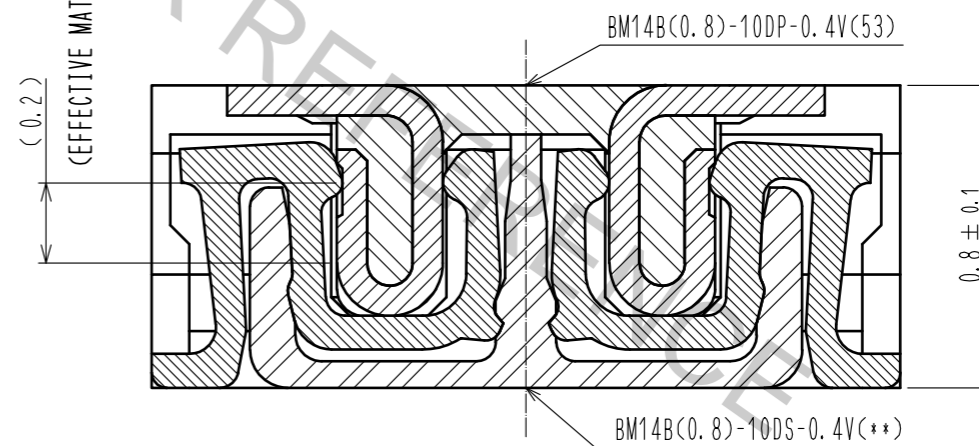


A-A (50:1)



ENGAGEMENT FIGURE (50:1)



NOTE) 1 . ALL LEAD CO-PLANARITY SHALL BE 0.08mm MAX

2 . CONTACT PLATING SPECIFICATIONS

CONTACT AREA : GOLD 0.05 μm MIN

SMT LEAD : GOLD 0.05 μm MIN

UNDERPLATING : NICKEL 1 μm MIN

(SURFACE : SEALING)

3 . EACH CONTACTS AT 4 CORNERS ARE PROVIDED FOR METAL FITTINGS AND GROUNDING PURPOSE.

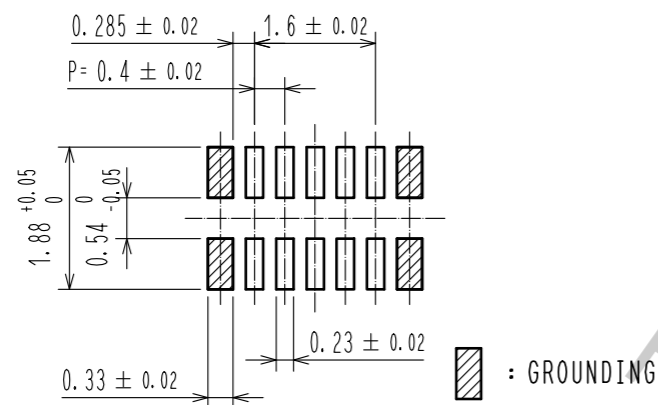
4 . HRS MARK AND CAV No. ARE INDICATED IN APPROX POSITION SHOWN.

5 . A PART OF THE WALL COULD BE NOTCHED.

3	PS	CLEAR (ENBOSSED CARRIER TAPE)	6	PS	CLEAR (REINFORCEMENT COLLAR)
2	PHOSPHOR BRONZE	2	5	PS	BLACK (PLASTIC REEL)
1	LCP	UL94 V-0, BLACK	4	POLYESTER	CLEAR (COVER TAPE)
NO.	MATERIAL	FINISH . REMARKS	NO.	MATERIAL	FINISH . REMARKS

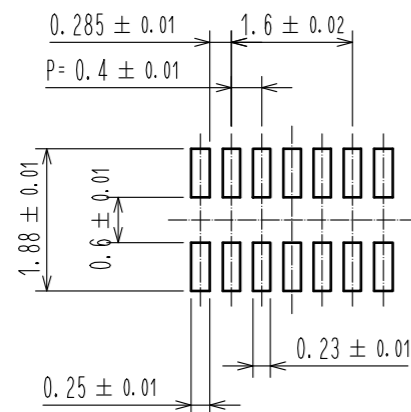
UNITS mm		SCALE 10:1	COUNT 	DESCRIPTION OF REVISIONS	DESIGNED	CHECKED	DATE
HIROSE ELECTRIC CO., LTD.				APPROVED : MO. ISHIDA 17.01.19 CHECKED : TS. MIYAZAKI 17.01.19 DESIGNED : NY. YAMASHIRO 17.01.19 DRAWN : SN. NUMAZAKI 17.01.18	DRAWING NO. EDC-319845-53-00 PART NO. BM14B(0.8)-10DP-0.4V(53) CODE NO. CL684-8010-0-53		

◆ RECOMMENDED PCB LAYOUT

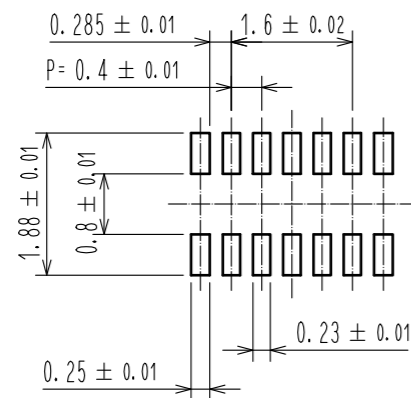


◆ RECOMMENDED METAL MASK DIMENSIONS

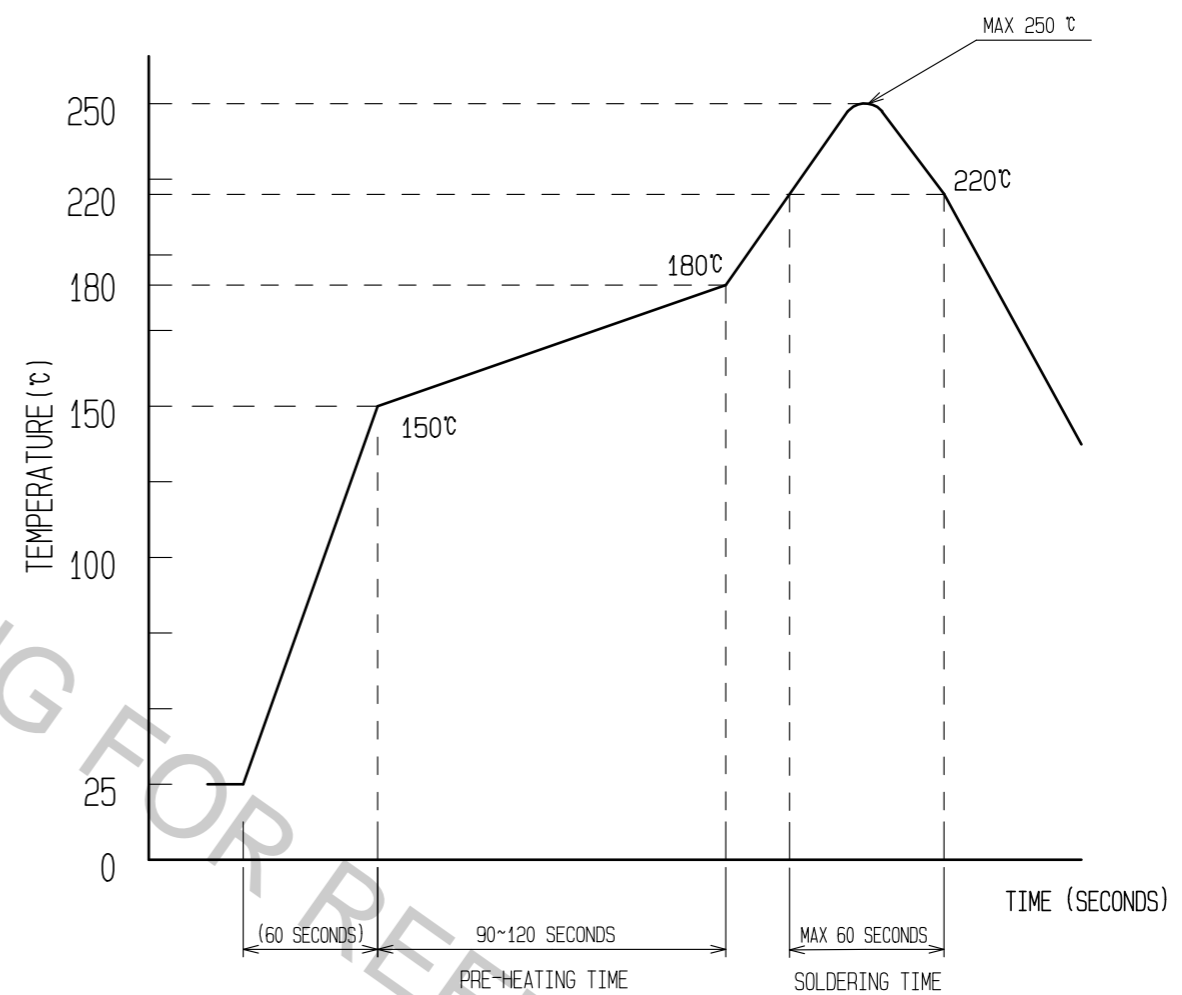
METAL MASK THICKNESS : 100 μm



METAL MASK THICKNESS : 120 μm



⑥ RECOMMENDED REFLOW TEMPERATURE PROFILE USING LEAD-FREE SOLDER PASTE.



REFLOW METHOD: IR REFLOW
NUMBER OF REFLOW CYCLES: 2 CYCLES MAX.

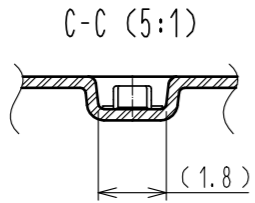
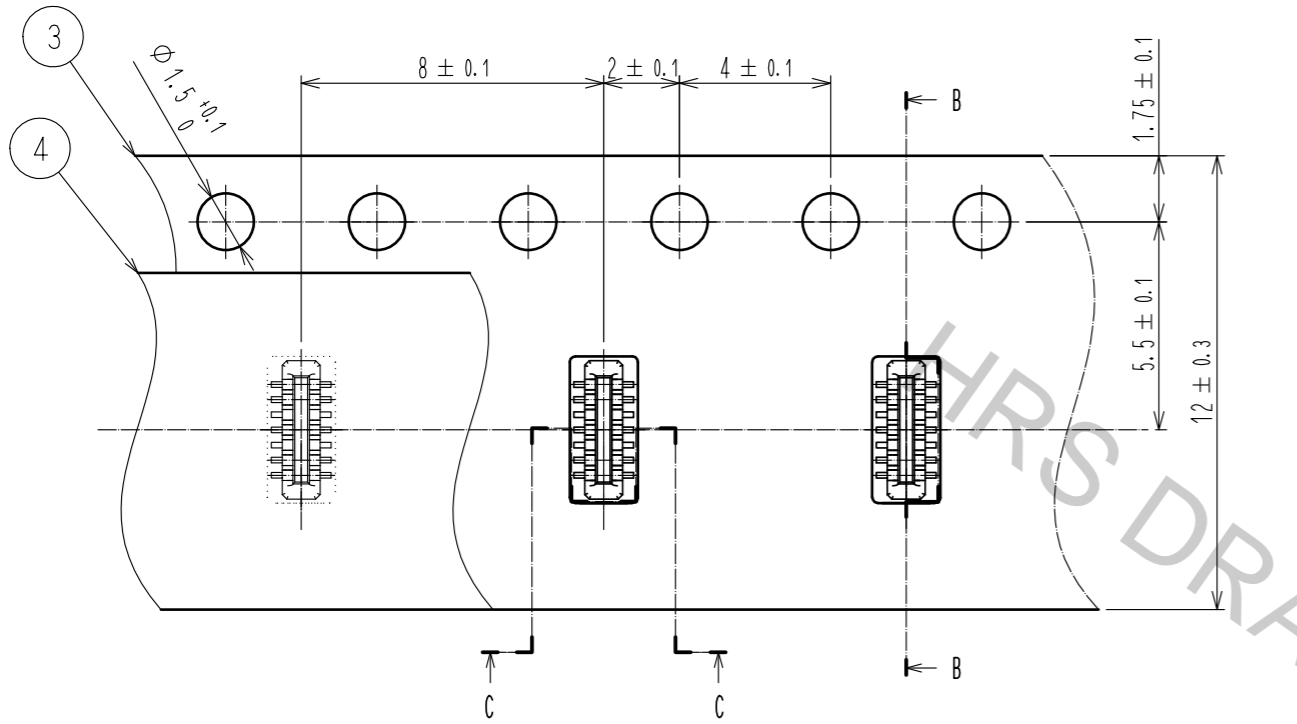
- 1) REFLOW TIME
DURATION ABOVE 220°C, 60 SEC. MAX.
(PEAK TEMPERATURE: 250°C MAX)
- 2) PRE-HEAT TIME
PRE-HEAT TEMPERATURE(MIN): 150°C
PRE-HEAT TEMPERATURE(MAX): 180°C
PRE-HEAT TIME: 90-120 sec.

⑥ THIS TEMPERATURE PROFILE IS PER THE CONDITIONS SHOWN ABOVE. ADDITIONAL FACTORS, SUCH AS SOLDER PASTE TYPE, PCB SIZE AND OTHER MOUNTED COMPONENTS COULD AFFECT THE PROFILE, THEREFORE, A THOROUGH EVALUATION OF MOUNTING CONDITION IS REQUIRED PRIOR TO PRODUCTION. TEMPERATURE IS MEASURED AT CONTACT LEAD.

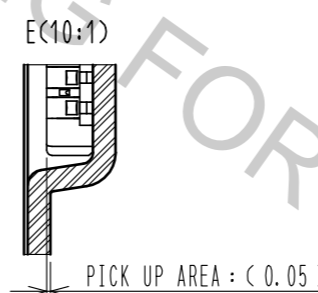
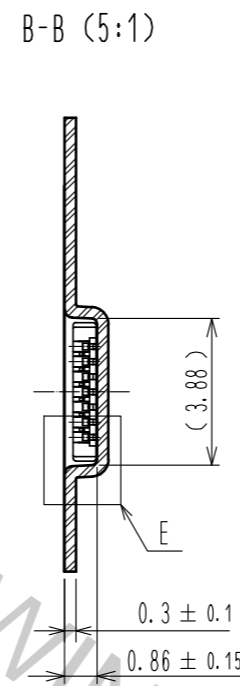
HRS	DRAWING NO.	EDC-319845-53-00
	PART NO.	BM14B(0.8)-10DP-0.4V(53)
	CODE NO.	CL684-8010-0-53

Oct.1.2018 Copyright 2018 HIROSE ELECTRIC CO., LTD. All Rights Reserved.
 In case that the application demands a high level of reliability, such as automotive,
 please contact a company representative for further information.

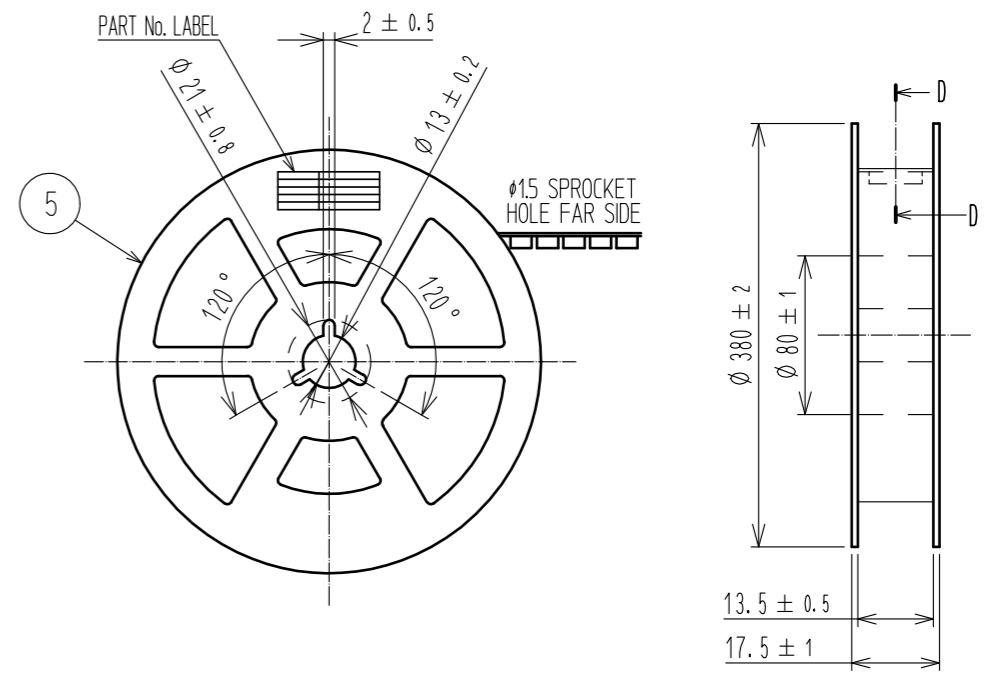
EMBOSSED CARRIER TAPE PACKAGING (5:1)



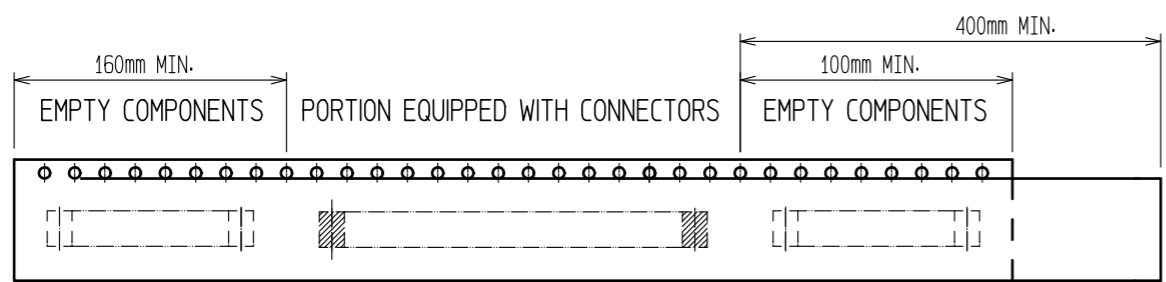
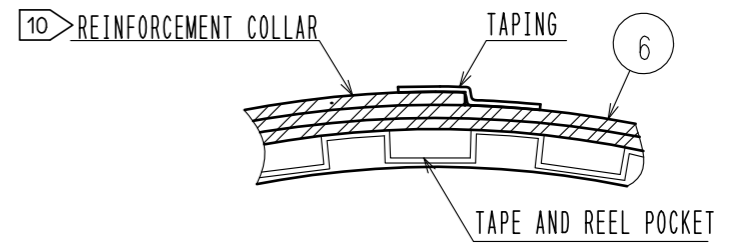
DIRECTION OF UNREELING \rightarrow



STYLE AND DIMENTION OF REEL (FREE)



D-D (FREE)



TAPING (FREE)

DETAIL OF PART No. LABEL

SUPPLIER	
QUANTITY	
PART No.	
CODE No.	
DATE OF MANUFACTURED	
製造年月日	** ** *
製品コード	CL684-8010-0-53
製品名	BM14B(0.8)-10DP-0.4V(53)
数量	1,000
納入者	ヒロセ電機(株)

- 7. PER REEL 1000 CONNECTORS.
- 8. THE DIMENSIONS IN PARENTHESSES ARE FOR REFERENCE.
- 9 REFER TO JIS C 0806(PACKAGING OF COMPONENTS FOR AUTOMATIC HANDLING)
- 10 AFTER PACKAGING, ROLL 2 METERS OF THE REINFORCEMENT COLLAR TO OUTER CIRCUMFERENCE OF TAPE AND REEL POCKET, AND TAPE DOWN AT THE END THE COLLAR.

HRS	DRAWING NO.	EDC-319845-53-00
	PART NO.	BM14B(0.8)-10DP-0.4V(53)
	CODE NO.	CL684-8010-0-53