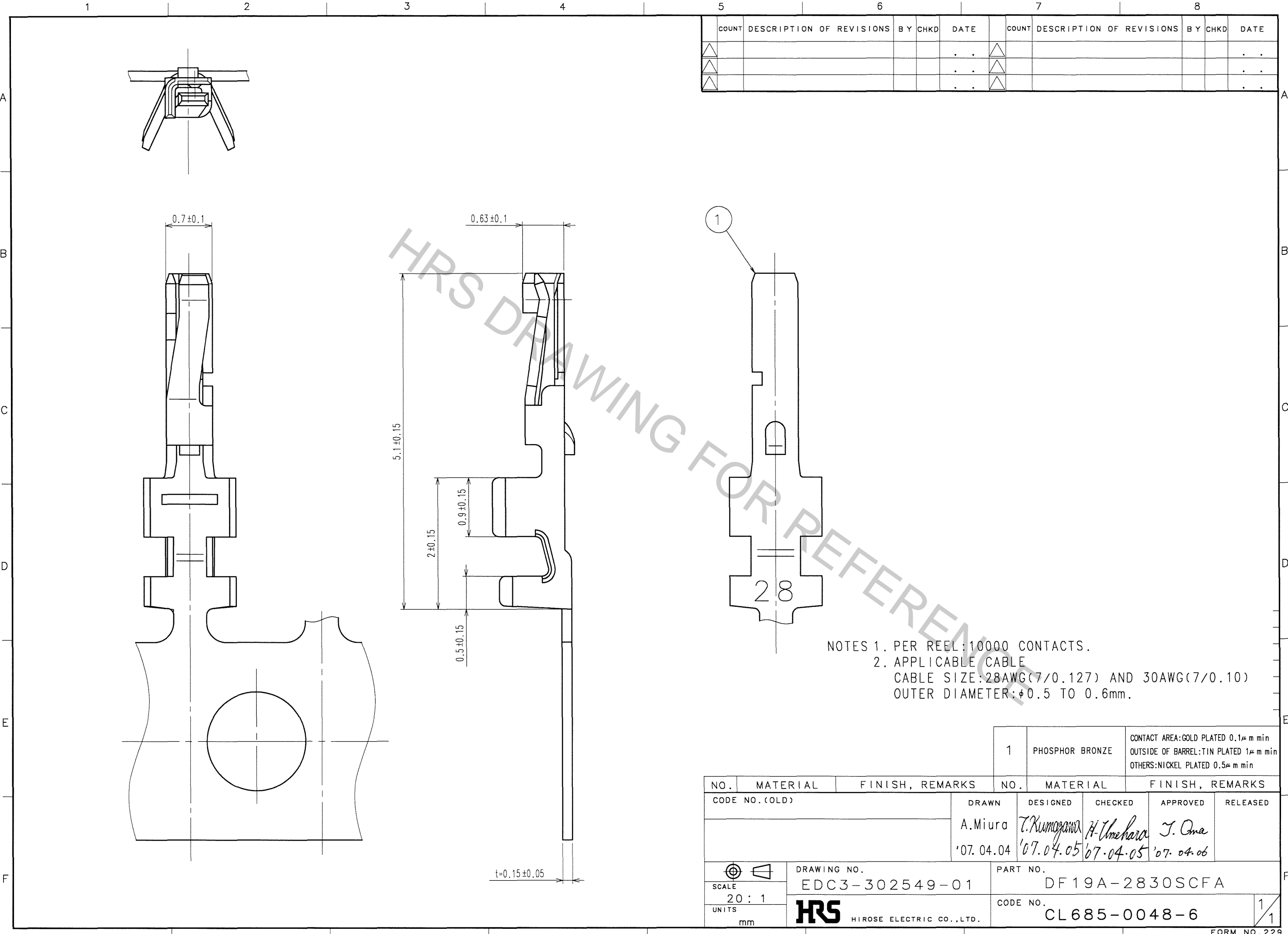


Oct.1.2018 Copyright 2018 HIROSE ELECTRIC CO., LTD. All Rights Reserved.
 In case that the application demands a high level of reliability, such as automotive,
 please contact a company representative for further information.



COUNT	DESCRIPTION OF REVISIONS	BY	CHKD	DATE	COUNT	DESCRIPTION OF REVISIONS	BY	CHKD	DATE
△				..	△				..
△				..	△				..
△				..	△				..

NOTES 1. PER REEL:10000 CONTACTS.
 2. APPLICABLE CABLE
 CABLE SIZE:28AWG(7/0.127) AND 30AWG(7/0.10)
 OUTER DIAMETER:φ0.5 TO 0.6mm.

TO

1	PHOSPHOR BRONZE	CONTACT AREA:GOLD PLATED 0.1μ m min OUTSIDE OF BARREL:TIN PLATED 1μ m min OTHERS:NICKEL PLATED 0.5μ m min				
NO.	MATERIAL	FINISH, REMARKS		NO.	MATERIAL	FINISH, REMARKS
CODE NO. (OLD)		DRAWN	DESIGNED	CHECKED	APPROVED	RELEASED
		A.Miura	T.Kumogawa	H.Umehara	J.Oma	
		'07.04.04	'07.04.05	'07.04.05	'07.04.06	
DRAWING NO. EDC3-302549-01		PART NO. DF19A-2830SCFA		CODE NO. CL685-0048-6		
SCALE 20:1		UNITS mm		HRS HIROSE ELECTRIC CO.,LTD.		
				FORM NO.229		

