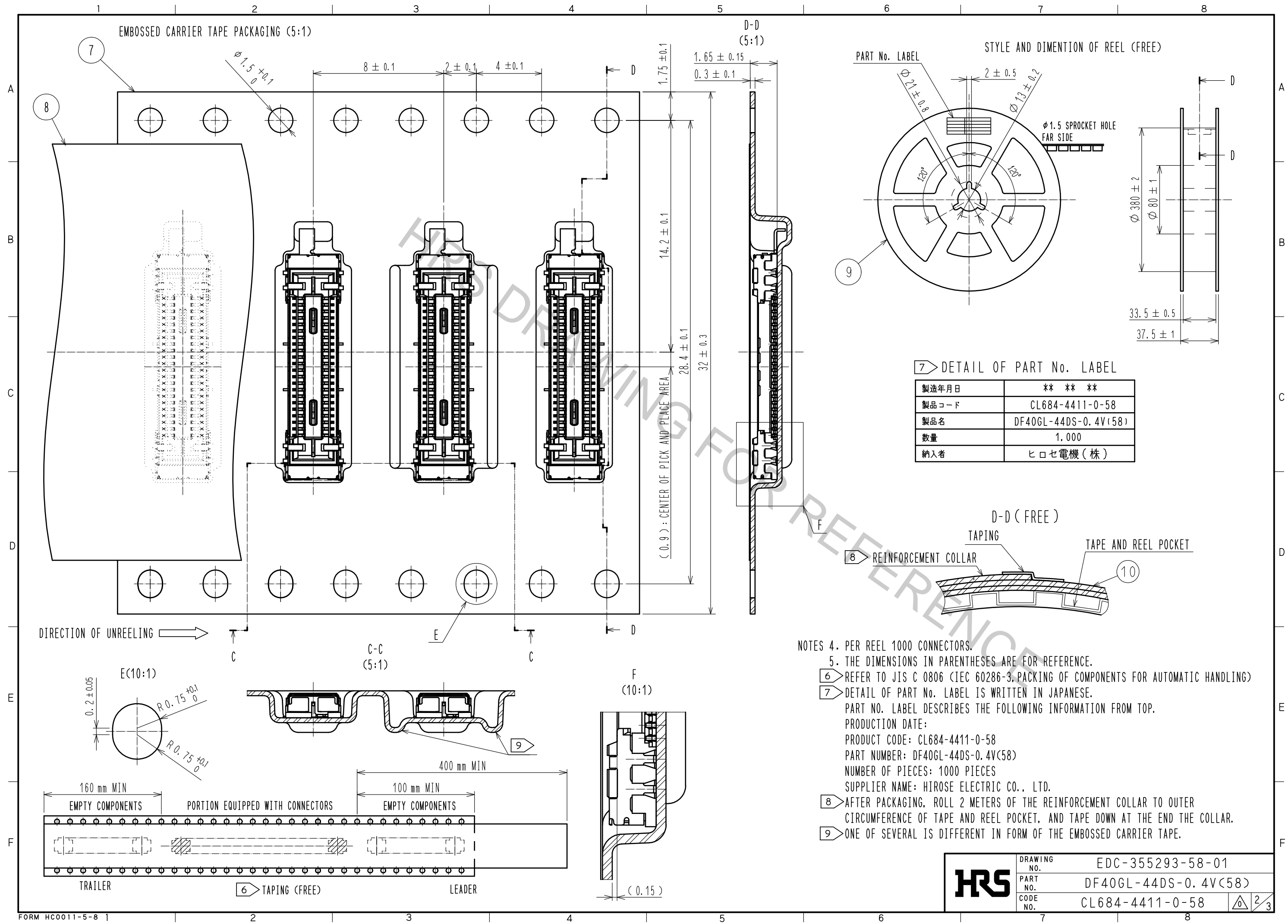
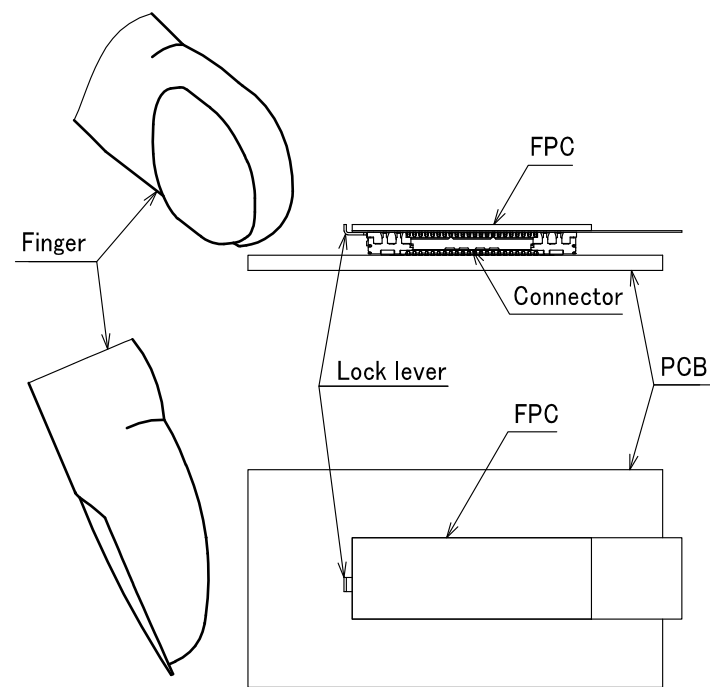


5	STAINLESS STEEL		10	PS	CLEAR(REINFORCEMENT COLLAR)
4	PHOSPHOR BRONZE	2	9	PS	BLACK(PLASTIC REEL)
3	PHOSPHOR BRONZE	2	8	POLYESTER	CLEAR(COVER TAPE)
2	PHOSPHOR BRONZE	2	7	PS	CLEAR(EMBOSSED CARRIER TAPE)
1	LCP	BLACK, UL94 V-0	6	STAINLESS STEEL	
NO.	MATERIAL	FINISH, REMARKS	NO.	MATERIAL	FINISH, REMARKS
UNITS mm		SCALE 10 : 1	COUNT 	DESCRIPTION OF REVISIONS	DESIGNED CHECKED DATE
		APPROVED : MO. ISHIDA	15.07.28	DRAWING NO.	EDC-355293-58-01
		CHECKED : WR. FUKUCHI	15.07.28	PART NO.	DF40GL-44DS-0.4V(58)
		DESIGNED : SJ. WADA	15.07.27	CODE NO.	CL684-4411-0-58
		DRAWN : KR. AJITO	15.07.27		

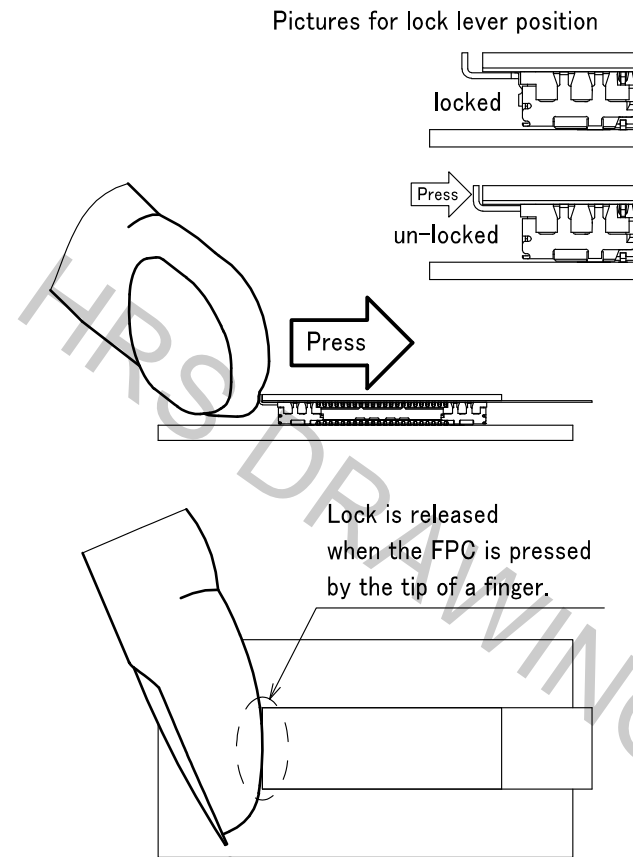


Oct.1.2018 Copyright 2018 HIROSE ELECTRIC CO., LTD. All Rights Reserved.  
In case that the application demands a high level of reliability, such as automotive,  
please contact a company representative for further information.

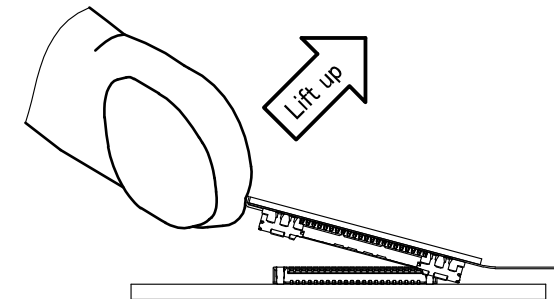
## Handling Instruction



### STEP 1 Press the lever to release the lock

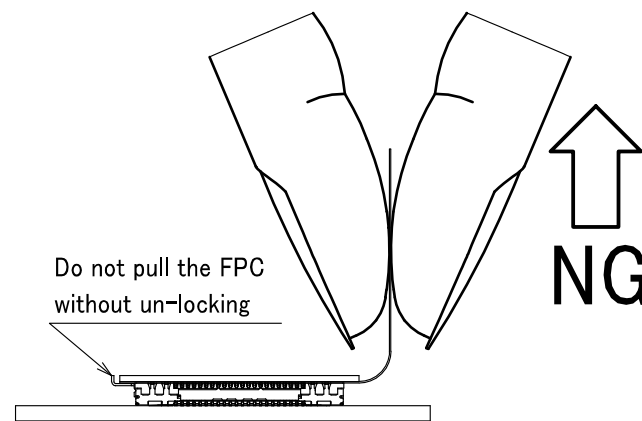
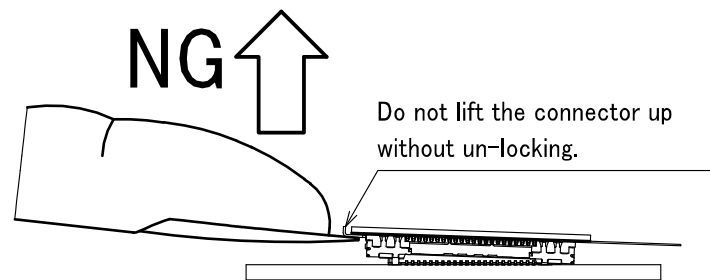


### STEP 2 While maintaining the unlocked position, lift the FPC up in the direction shown on illustration.

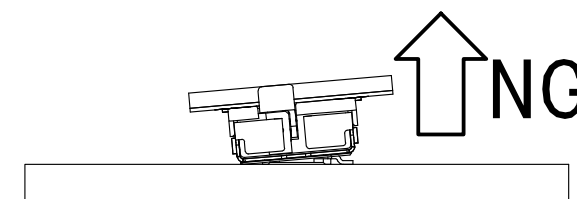


## Precaution

Do not attempt to un-mate without un-locking since there is a risk for connector breakage when un-mated without releasing the lock.



Do not un-mate in the depth direction to avoid contact or housing damage even when the lock is released.



**HRS**

DRAWING NO.	EDC-355293-58-01
PART NO.	DF40GL-44DS-0.4V(58)
CODE NO.	CL684-4411-0-58

3/3