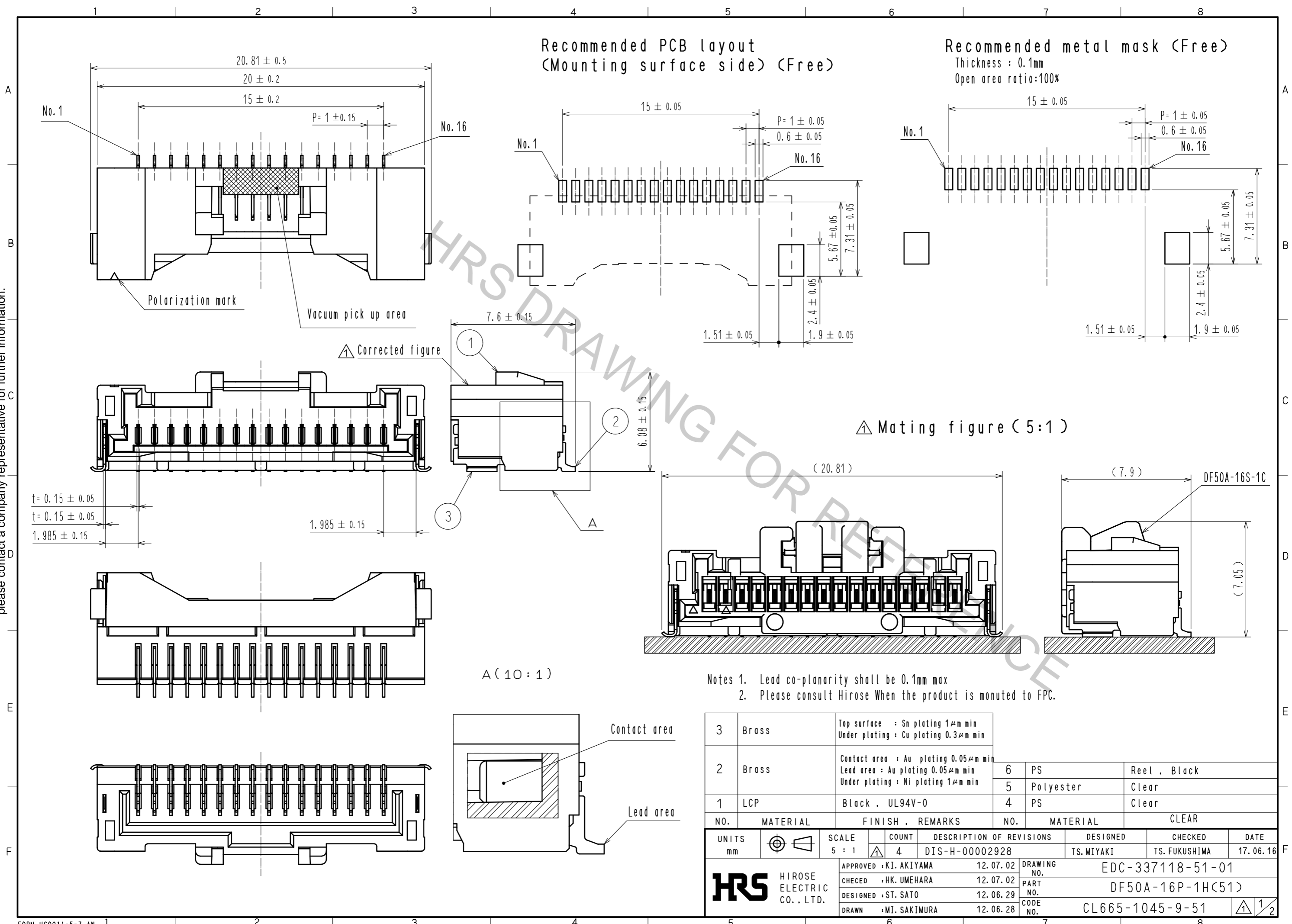


Oct.1.2018 Copyright 2018 HIROSE ELECTRIC CO., LTD. All Rights Reserved.
 In case that the application demands a high level of reliability, such as automotive,
 please contact a company representative for further information.



Recommended PCB layout
(Mounting surface side) (Free)

Recommended metal mask (Free)
 Thickness : 0.1mm
 Open area ratio:100%

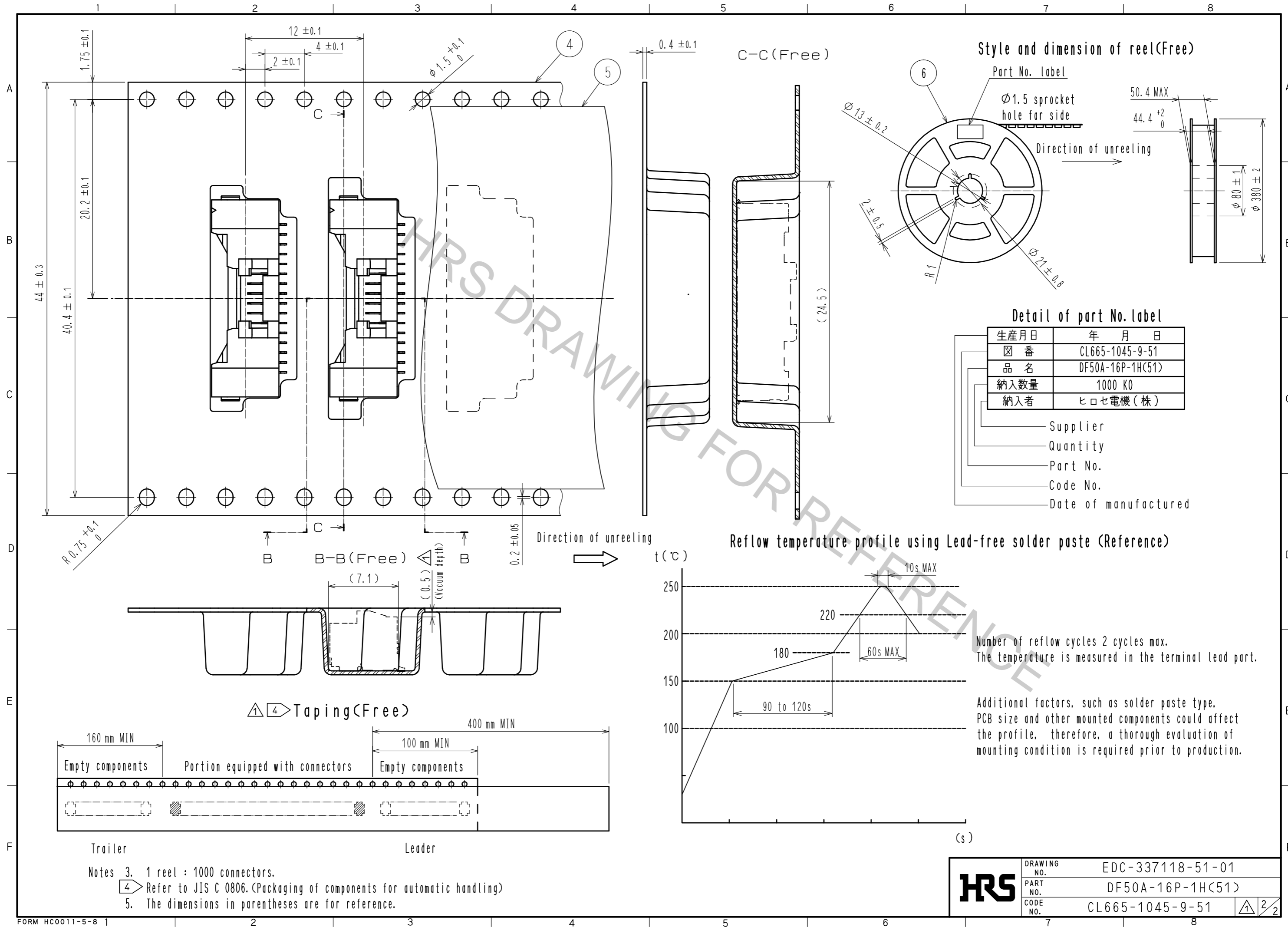
Mating figure (5:1)

A (10:1)

- Notes 1. Lead co-planarity shall be 0.1mm max
- 2. Please consult Hirose When the product is monuted to FPC.

3	Brass	Top surface : Sn plating 1μm min Under plating : Cu plating 0.3μm min			
2	Brass	Contact area : Au plating 0.05μm min Lead area : Au plating 0.05μm min Under plating : Ni plating 1μm min	6	PS	Reel , Black
1	LCP	Black , UL94V-0	5	Polyester	Clear
			4	PS	Clear
NO.	MATERIAL	FINISH , REMARKS	NO.	MATERIAL	CLEAR
UNITS	mm	SCALE	COUNT	DESCRIPTION OF REVISIONS	DESIGNED
		5 : 1	4	DIS-H-00002928	TS.MIYAKI
					CHECKED
					TS.FUKUSHIMA
					DATE
					17.06.16
APPROVED : KI. AKIYAMA		12.07.02	DRAWING NO. EDC-337118-51-01		
CHECED : HK. UMEHARA		12.07.02	PART NO. DF50A-16P-1H(51)		
DESIGNED : ST. SATO		12.06.29	CODE NO. CL665-1045-9-51		
DRAWN : MI. SAKIMURA		12.06.28			

Oct.1.2018 Copyright 2018 HIROSE ELECTRIC CO., LTD. All Rights Reserved.
 In case that the application demands a high level of reliability, such as automotive,
 please contact a company representative for further information.



HRS	DRAWING NO.	EDC-337118-51-01
	PART NO.	DF50A-16P-1H(51)
	CODE NO.	CL665-1045-9-51
		2/2