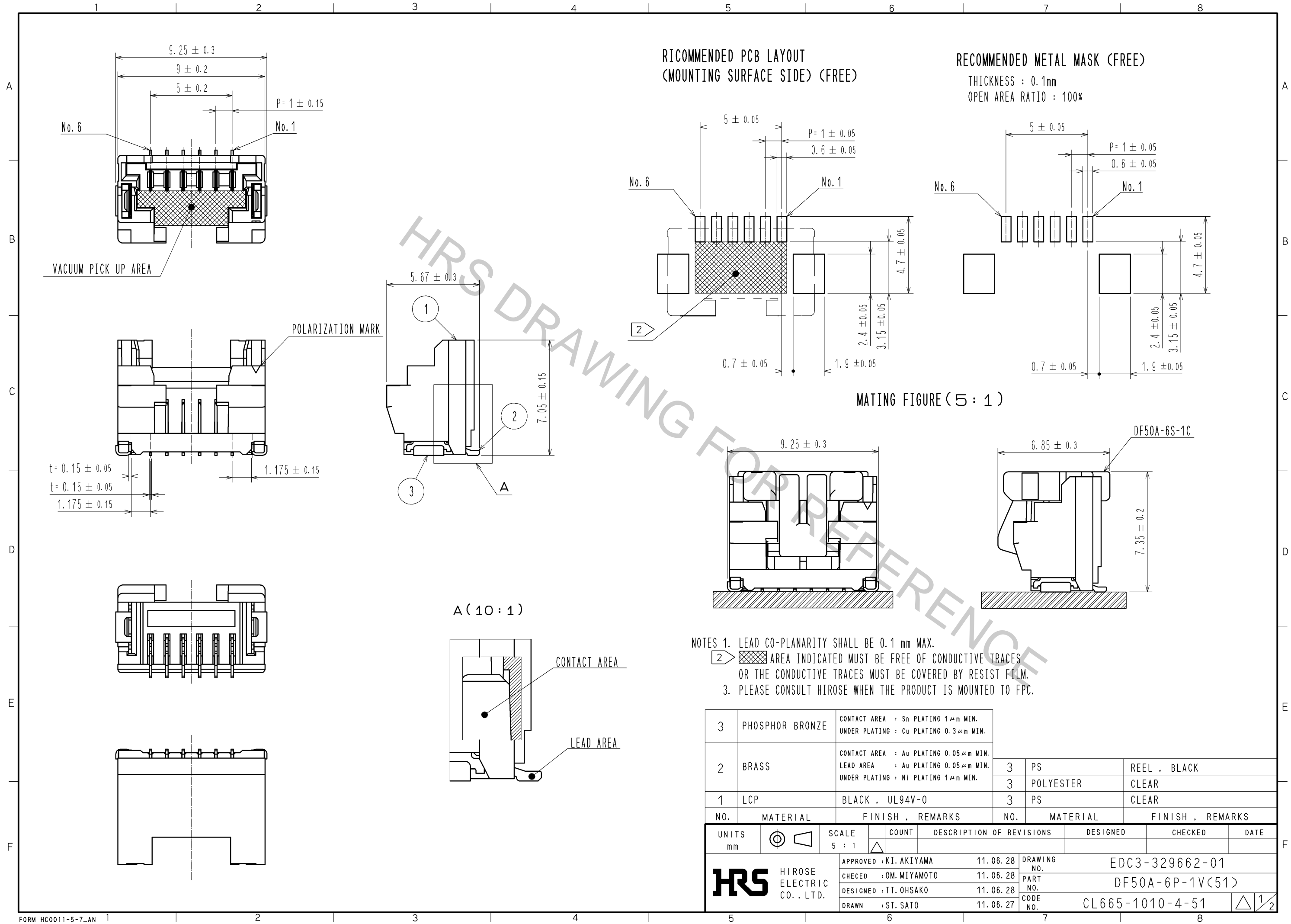


Oct.1.2018 Copyright 2018 HIROSE ELECTRIC CO., LTD. All Rights Reserved.  
In case that the application demands a high level of reliability, such as automotive,  
please contact a company representative for further information.

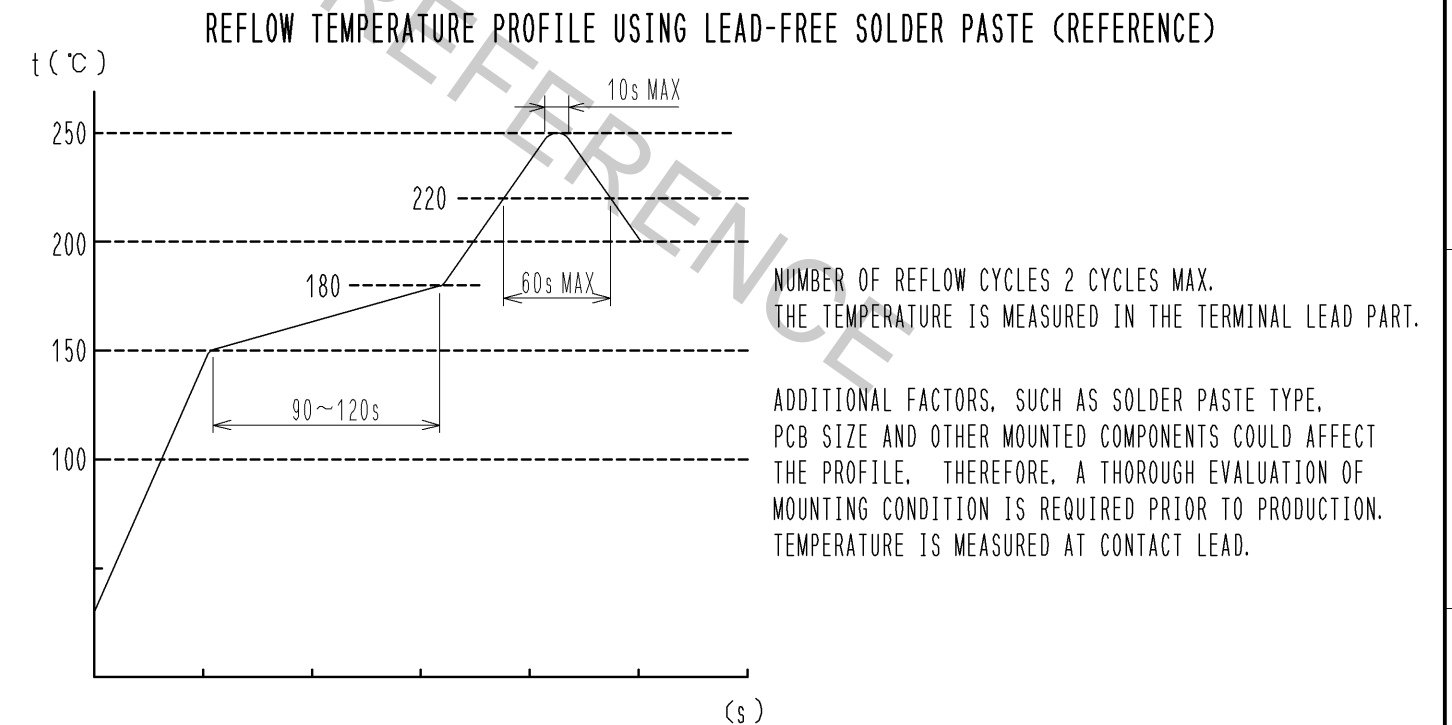




NOTE 4. 1 REEL : 1000 CONNECTORS

5 REEL TO JIS C 0806. (PACKAGING OF COMPONENTS FOR AUTOMATIC HANDLING)

6. THE DIMENSIONS IN PARENTHESES ARE FOR REFERENCE.



生産月日	年 月 日
図 番	CL665-1010-4-51
品 名	DF50A-6P-1V(51)
納入数量	1000 K0
納入者	ヒロセ電機(株)

— SUPPLIER  
— QUANTITY  
— PART No.  
— CODE No.  
— DATE OF MANUFACTURED

NUMBER OF REFLOW CYCLES 2 CYCLES MAX.  
THE TEMPERATURE IS MEASURED IN THE TERMINAL LEAD PART.

ADDITIONAL FACTORS, SUCH AS SOLDER PASTE TYPE,  
PCB SIZE AND OTHER MOUNTED COMPONENTS COULD AFFECT  
THE PROFILE. THEREFORE, A THOROUGH EVALUATION OF  
MOUNTING CONDITION IS REQUIRED PRIOR TO PRODUCTION.  
TEMPERATURE IS MEASURED AT CONTACT LEAD.