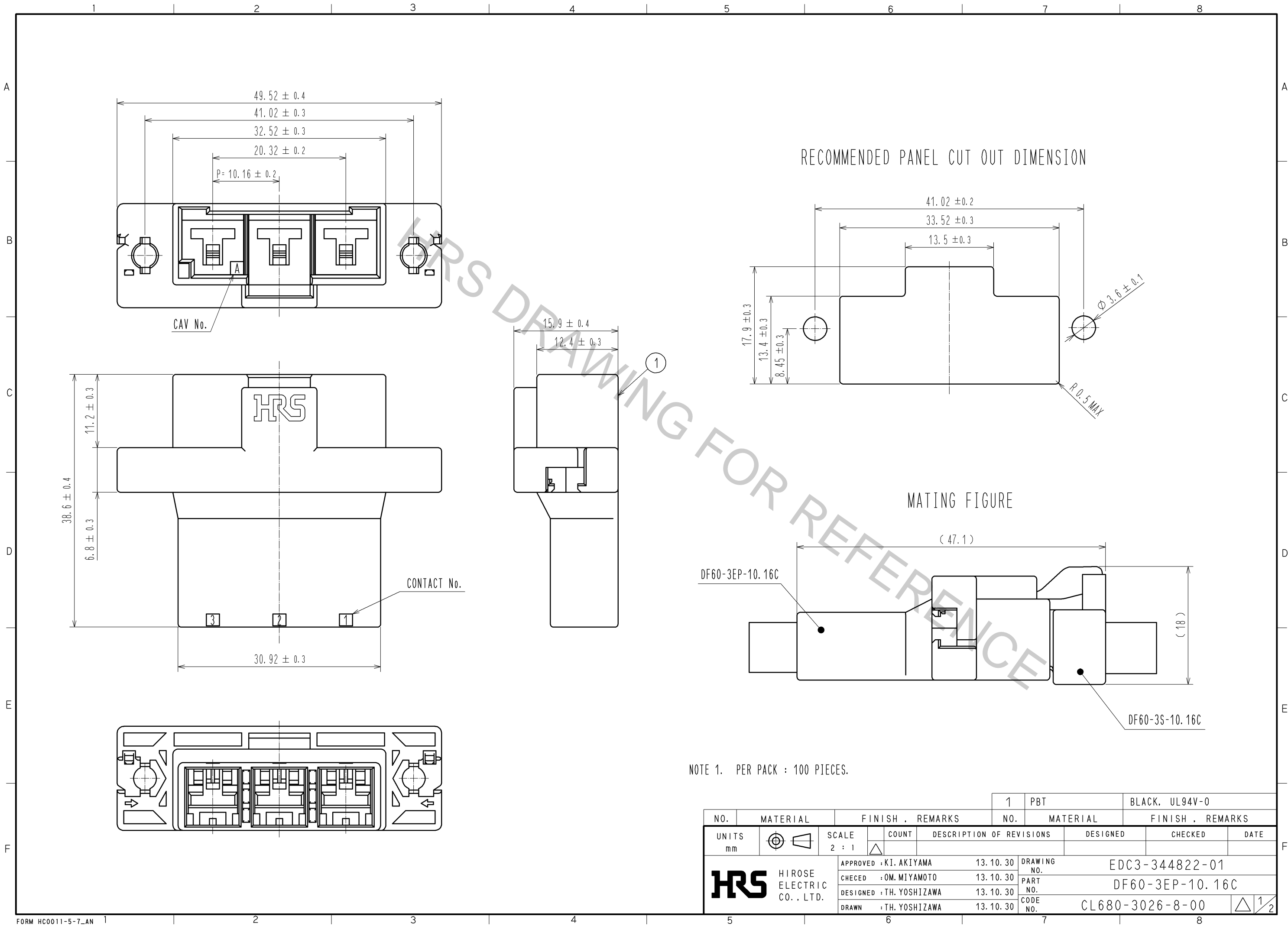
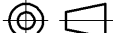





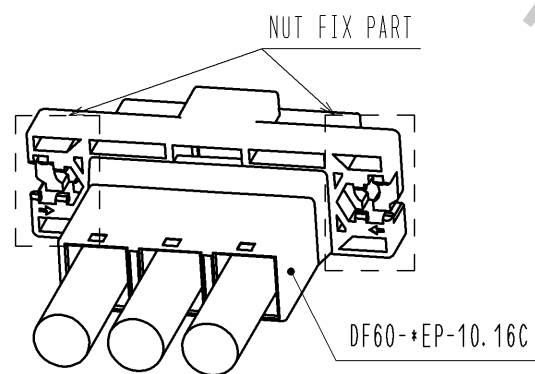
Oct.1.2018 Copyright 2018 HIROSE ELECTRIC CO., LTD. All Rights Reserved.
In case that the application demands a high level of reliability, such as automotive,
please contact a company representative for further information.



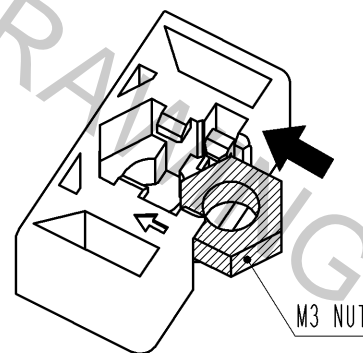
NO.		MATERIAL		FINISH . REMARKS		1		PBT		BLACK, UL94V-0							
NO.		MATERIAL		FINISH . REMARKS		NO.		MATERIAL		FINISH . REMARKS							
UNITS mm				SCALE 2 : 1				COUNT		DESCRIPTION OF REVISIONS		DESIGNED		CHECKED		DATE	
 HIROSE ELECTRIC CO., LTD.				APPROVED : KI. AKIYAMA				13.10.30				DRAWING NO. EDC3-344822-01					
				CHECED : OM. MIYAMOTO				13.10.30				PART NO. DF60-3EP-10.16C					
				DESIGNED : TH. YOSHIZAWA				13.10.30				CODE NO. CL680-3026-8-00					
				DRAWN : TH. YOSHIZAWA				13.10.30				 1/2					
5				6				7				8					

DF60 IN-LINE TYPE RECOMMENDED PANEL MOUNTING MANUAL (WHEN NUTS USES)

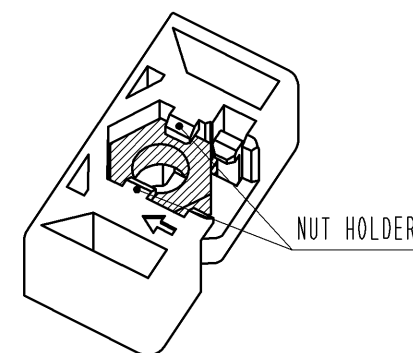
NUT INSTALLATION PROCESS



1. SLIDE A NUT (SIZE:M3) TO NUT FIX PART.

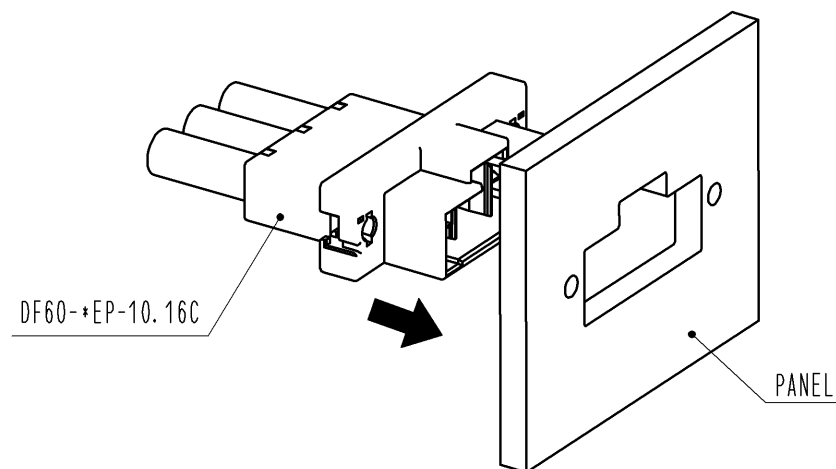


2. PRESS DOWN THE NUT UNTIL IT CLICKS, THEN THIS SOUND MEANS THE NUT HAS INSERTED INTO NUT HOLDER.

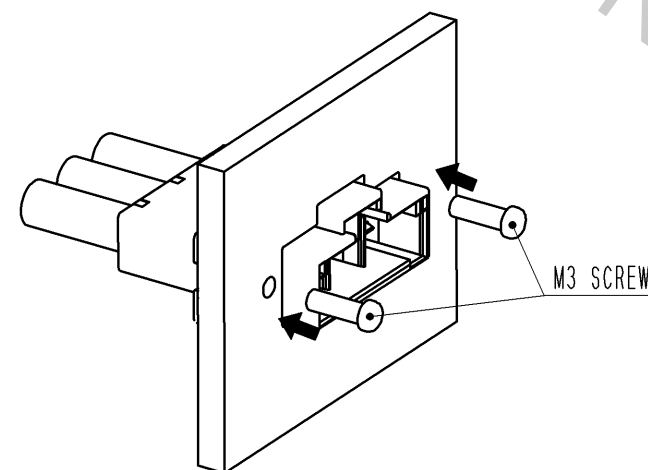


PANEL MOUNTING PROCESS

1. INSERT CONNECTOR INTO PANEL CUT OUT PART.



2. TIGHTEN A SCREW (SIZE:M3) TO FIX WITH PANEL.
RECOMMENDED TORQUE : LESS THAN 49N·cm



HRS

DRAWING NO.	EDC3-344822-01
PART NO.	DF60-3EP-10.16C
CODE NO.	CL680-3026-8-00

2/2