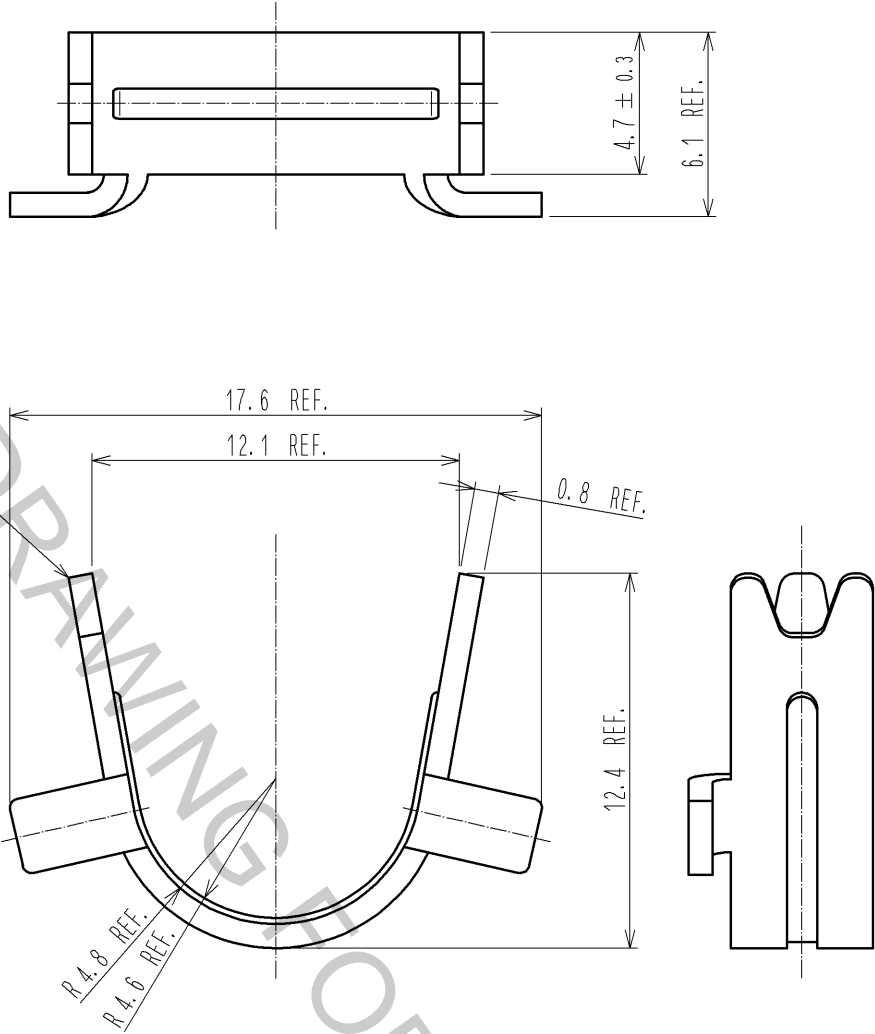
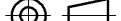





Oct.1.2018 Copyright 2018 HIROSE ELECTRIC CO., LTD. All Rights Reserved.
In case that the application demands a high level of reliability, such as automotive,
please contact a company representative for further information.



NOTE 1. THIS PRODUCT IS A CLAMP FOR A COVER CASE 'DH-37-C**B'
2. THE APPLICABLE CABLE DIAMETER IS $\phi 8.8$
① 3. THIS PRODUCT IS PACKED IN A BAG.
(QUANTITY PER BAG MAY VARY DUE TO THE AMOUNT OF EACH ORDER.)

				1	BRASS				
NO.	MATERIAL	FINISH . REMARKS			NO.	MATERIAL	FINISH . REMARKS		
UNITS mm		SCALE 4 : 1		COUNT 1	DESCRIPTION OF REVISIONS DIS-E-003059		DESIGNED MO. SHIMOYAMA	CHECKED KN. ICHIKAWA	DATE 09.12.07
 HIROSE ELECTRIC CO., LTD.			APPROVED : A.O. SUZUKI		09.10.05	DRAWING NO. EDC4-126659-00			
			CHECKED : KN. ICHIKAWA		09.10.02	PART NO. DH-37-CMB(8.8)			
			DESIGNED : TU. TANIGUCHI		09.10.02	CODE NO. CL244-0033-0-00			
			DRAWN : TU. TANIGUCHI		09.10.02			1/1	