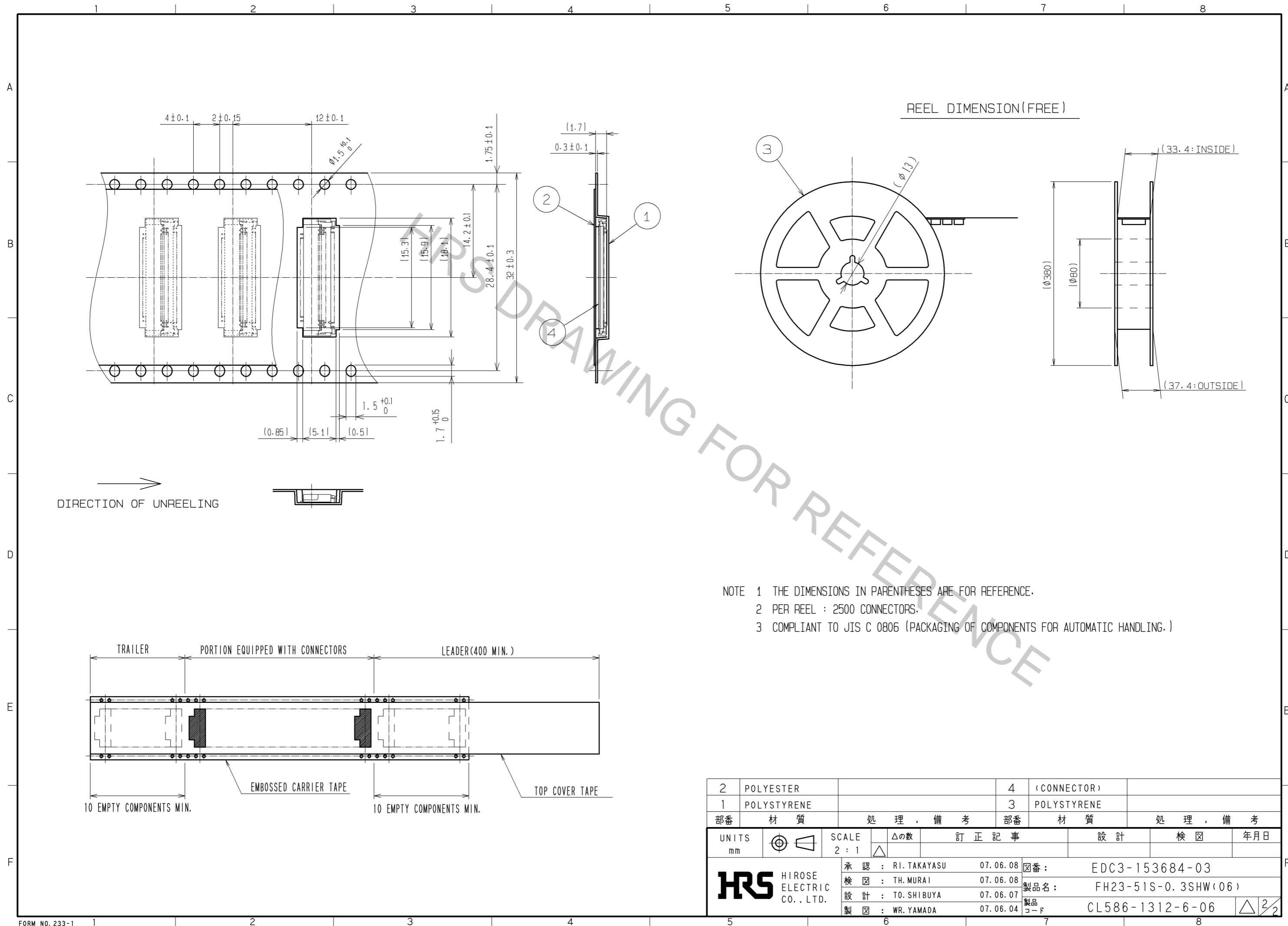


2	LCP	BLACK	4	PHOSPHOR BRONZE	GOLD FLASH OVER NICKEL 1μm		
1	LCP	BEIGE	3	PHOSPHOR BRONZE	GOLD FLASH OVER NICKEL 1μm		
NO.	MATERIAL	FINISH . REMARKS	NO.	MATERIAL	FINISH . REMARKS		
UNITS mm		SCALE 10: 1	COUNT △	DESCRIPTION OF REVISIONS	DESIGNED	CHECKED	DATE
<b>HRS</b> HIROSE ELECTRIC CO., LTD.		APPROVED : RI. TAKAYASU	07. 06. 08	DRAWING NO. EDC3-153684-03			
		CHECED : TH. MURAI	07. 06. 08	PART NO. FH23-51S-0. 3SHW(06)			
		DESIGNED : TO. SHIBUYA	07. 06. 07	CODE NO. CL586-1312-6-06			
		DRAWN : WR. YAMADA	07. 06. 04				

Oct.1.2018 Copyright 2018 HIROSE ELECTRIC CO., LTD. All Rights Reserved.  
 In case that the application demands a high level of reliability, such as automotive,  
 please contact a company representative for further information.



NOTE 1 THE DIMENSIONS IN PARENTHESES ARE FOR REFERENCE.  
 2 PER REEL : 2500 CONNECTORS.  
 3 COMPLIANT TO JIS C 0806 (PACKAGING OF COMPONENTS FOR AUTOMATIC HANDLING.)

2	POLYESTER		4	(CONNECTOR)	
1	POLYSTYRENE		3	POLYSTYRENE	
部番	材質	処理, 備考	部番	材質	処理, 備考
UNITS mm		SCALE 2:1		△の数	訂正記事
<b>HRS</b> HIROSE ELECTRIC CO., LTD.		承認 : RI. TAKAYASU 07.06.08	図番 : EDC3-153684-03		
		検 査 : TH. MURAI 07.06.08	製品名 : FH23-51S-0.3SHW(06)		
		設 計 : TO. SHIBUYA 07.06.07	製品コード : CL586-1312-6-06		
		製 図 : WR. YAMADA 07.06.04	△ 2/2		