

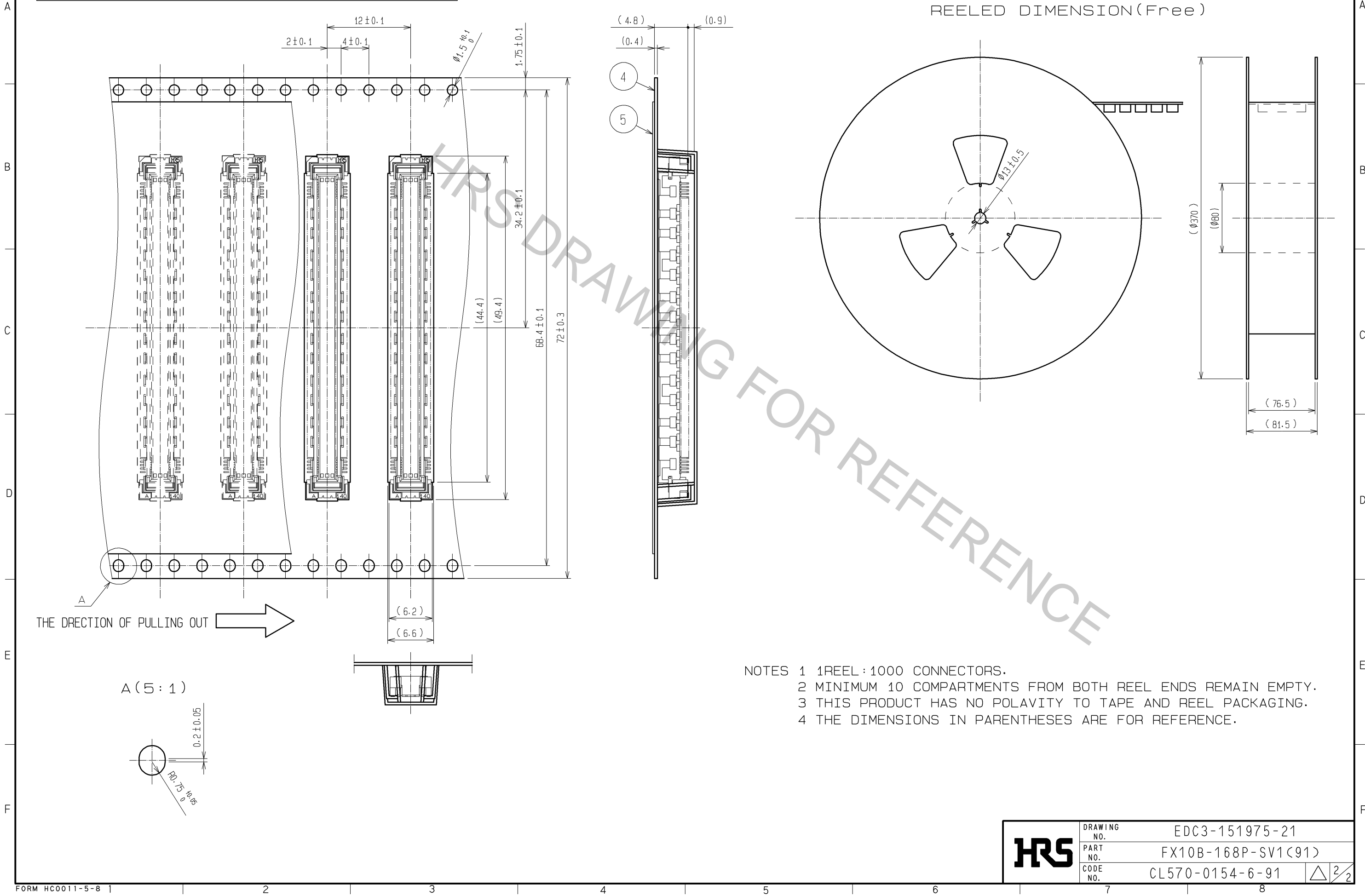


3	PHOSPHOR BRONZE	TIN-PLATING					
2	PHOSPHOR BRONZE	CONTACT AREA:GOLD 0.1μm min.					
		LEAD AREA :TIN-PLATING 1μm min.					
1	LCP	BEIGE UL94V-0	5	POLYESTER	TOP COVER TAPE		
			4	POLYSTYRENE	EMBOSSSED CARRIER TAPE		
NO.	MATERIAL	FINISH	REMARKS	NO.	MATERIAL	FINISH	REMARKS

UNITS mm		SCALE		COUNT	DESCRIPTION OF REVISIONS	DESIGNED	CHECKED	DATE
		4 : 1						
HIROSE ELECTRIC CO., LTD.		APPROVED	: HT. YAMAGUCHI	10. 07. 29	DRAWING NO.	EDC3-151975-21		
		CHECED	: HT. YAMAGUCHI	10. 07. 29	PART NO.	FX10B-168P-SV1(91)		
		DESIGNED	: SY. KAMIGA	10. 07. 29	PART NO.			
		DRAWN	: HK. SUNADORI	10. 07. 28	CODE NO.	CL570-0154-6-91		1/2

Oct.1.2018 Copyright 2018 HIROSE ELECTRIC CO., LTD. All Rights Reserved.
In case that the application demands a high level of reliability, such as automotive,
please contact a company representative for further information.

DRAWING FOR PACKING(2:1)



- NOTES 1 1REEL : 1000 CONNECTORS.
2 MINIMUM 10 COMPARTMENTS FROM BOTH REEL ENDS REMAIN EMPTY.
3 THIS PRODUCT HAS NO POLAVITY TO TAPE AND REEL PACKAGING.
4 THE DIMENSIONS IN PARENTHESES ARE FOR REFERENCE.

HRS	DRAWING NO.	EDC3-151975-21
	PART NO.	FX10B-168P-SV1(91)
	CODE NO.	CL570-0154-6-91

2/2