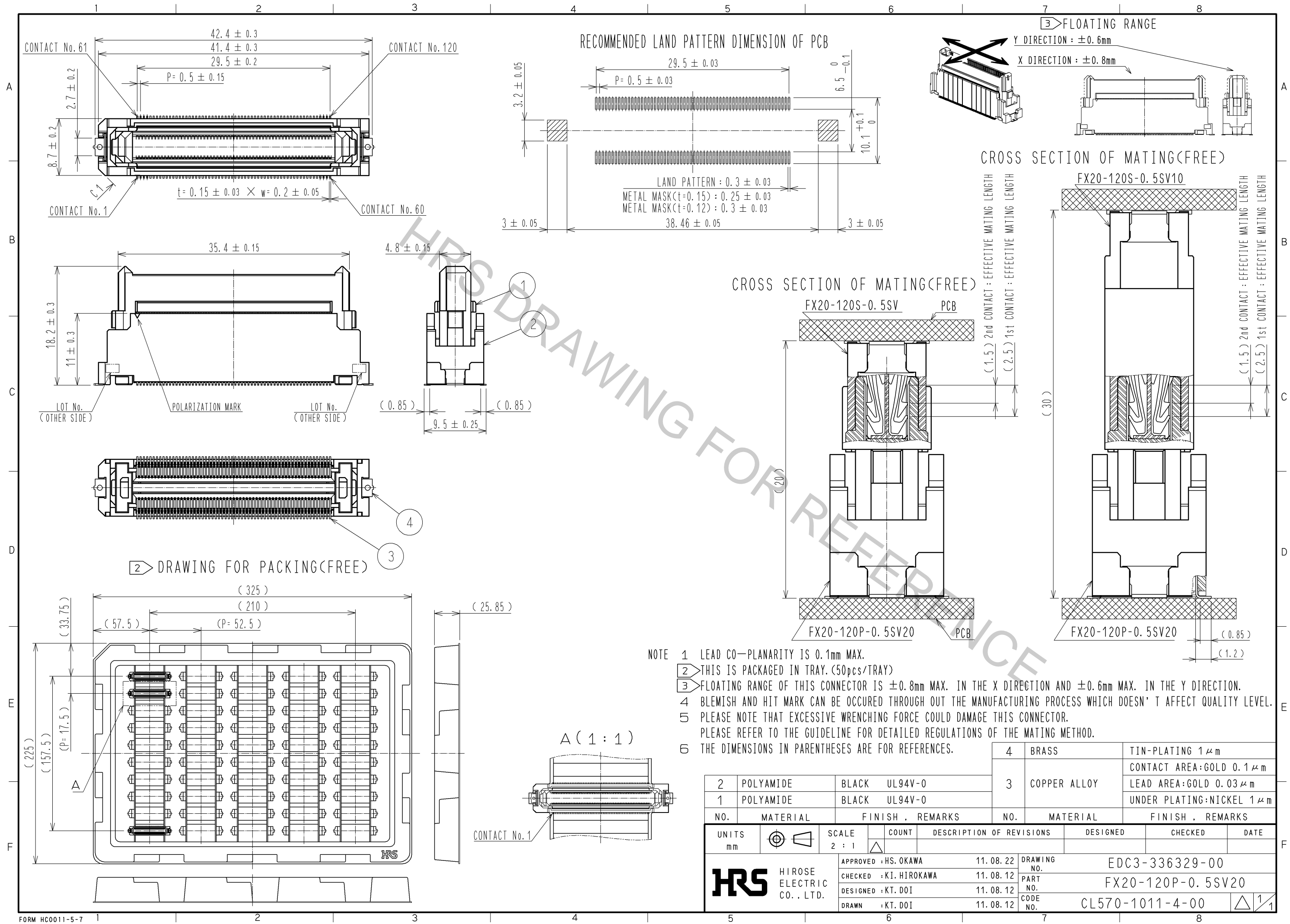
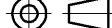
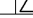




Oct.1.2018 Copyright 2018 HIROSE ELECTRIC CO., LTD. All Rights Reserved.
In case that the application demands a high level of reliability, such as automotive,
please contact a company representative for further information.



					4	BRASS	TIN-PLATING 1 μm				
					3	COPPER ALLOY	CONTACT AREA:GOLD 0.1 μm				
2 POLYAMIDE BLACK UL94V-0							LEAD AREA:GOLD 0.03 μm				
1 POLYAMIDE BLACK UL94V-0							UNDER PLATING:NICKEL 1 μm				
NO.		MATERIAL		FINISH . REMARKS		NO.	MATERIAL	FINISH . REMARKS			
UNITS mm				SCALE 2 : 1		COUNT	DESCRIPTION OF REVISIONS		DESIGNED	CHECKED	DATE
 HIROSE ELECTRIC CO. , LTD.				APPROVED : HS. OKAWA		11.08.22	DRAWING NO. EDC3-336329-00				
				CHECKED : KI. HIROKAWA		11.08.12	PART NO. FX20-120P-0.5SV20				
				DESIGNED : KT. DOI		11.08.12	CODE NO. CL570-1011-4-00				
				DRAWN : KT. DOI		11.08.12	 1/1				