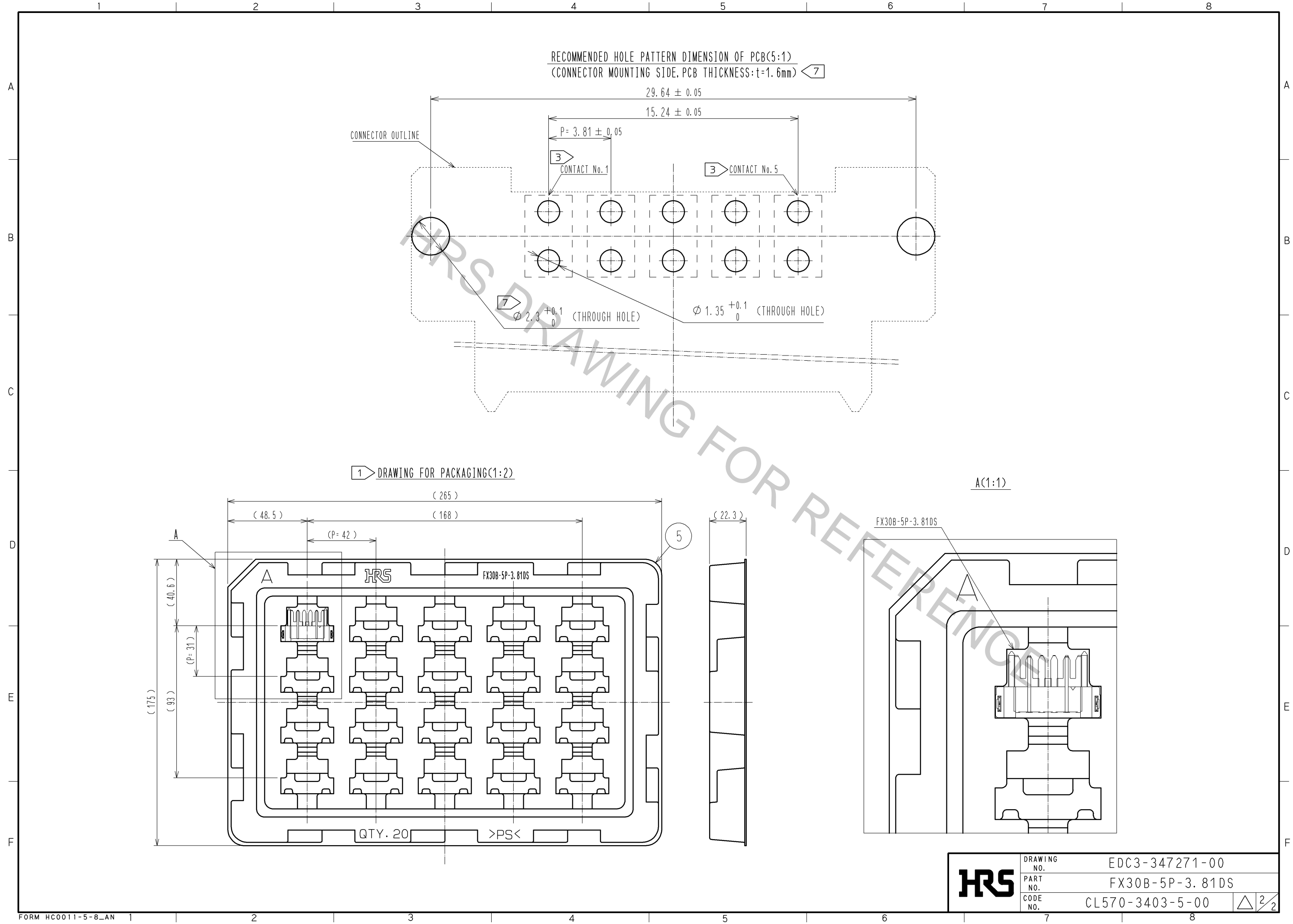


NOTE 1 THIS PRODUCT IS PACKAGED IN TRAY.(20pcs/TRAY)
2 BLEMISH AND HIT MARK CAN BE OCCURED THROUGH OUT THE MANUFACTURING PROCESS
WHITCH DOSEN'T AFFECT QUALITY LEVEL.
ALSO, BLACK SPOT COULD BE OBSERVED ON THE SURFACE OF HOUSING.
3 FOR THE CONTACT NO., ADJACENT TWO PAIRS OF LEADS PLACED BACK-TO-BACK (4 LEADS IN TOTAL)
COMPOSE ONE LINE.
4 MISALIGNMENT ABSORBING RANGE: ±0.3mm max.
5 THE DIMENSION IN PARENTHESES ARE FOR REFERENCES.
6 LOT NO. IS INDICATED AT EITHER ONE OF THE POSITION AS SHOWN.
7 PAY ATTENTION TO THE RECOMMENDED PCB THICKNESS AND FINISHED THROUGH-HOLE DIMENSIONS.
LOW RETENTION FORCE TO PCB COULD INDUCE ANGLED MOUNTING DUE TO THE UNBALANCED CENTER
OF THE CONNECTOR.

2		COPPER ALLOY	CONTACT AREA:GOLD-PLATING 0.1 μm LEAD AREA:TIN-PLATING 1.0 μm UNDER PLATING:NICKEL 1.0 μm	5		POLYSTYRENE	
1		POLYAMIDE	BLACK UL94V-0	4		PHOSPHOR BRONZE	TIN-PLATING 3.0 μm UNDER PLATING:NICKEL 1.0 μm
NO.		MATERIAL	FINISH , REMARKS	3		COPPER ALLOY	CONTACT AREA:GOLD-PLATING 0.1 μm LEAD AREA:TIN-PLATING 1.0 μm UNDER PLATING:NICKEL 1.0 μm
UNITS		mm	SCALE	COUNT		DESCRIPTION OF REVISIONS	DESIGNED
2 : 1							CHECKED
DATE							
APPROVED : HS. OKAWA		13.03.13	DRAWING NO.		EDC3-347271-00		
CHECED : KI. HIROKAWA		13.03.12	PART NO.		FX30B-5P-3.81DS		
DESIGNED : DK. AIMOTO		13.03.11	CODE NO.		CL570-3403-5-00		
DRAWN : DK. AIMOTO		13.03.11					

Oct.1.2018 Copyright 2018 HIROSE ELECTRIC CO., LTD. All Rights Reserved.
In case that the application demands a high level of reliability, such as automotive,
please contact a company representative for further information.



HRS	DRAWING NO.	EDC3-347271-00
	PART NO.	FX30B-5P-3.81DS
	CODE NO.	CL570-3403-5-00
	2 2	