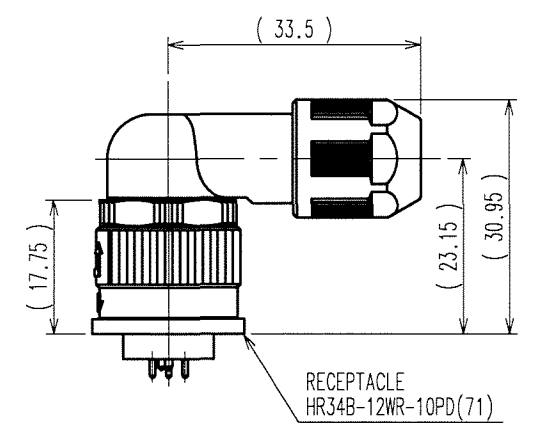
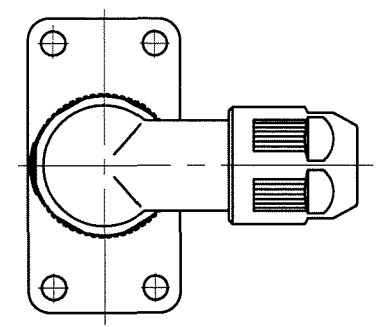
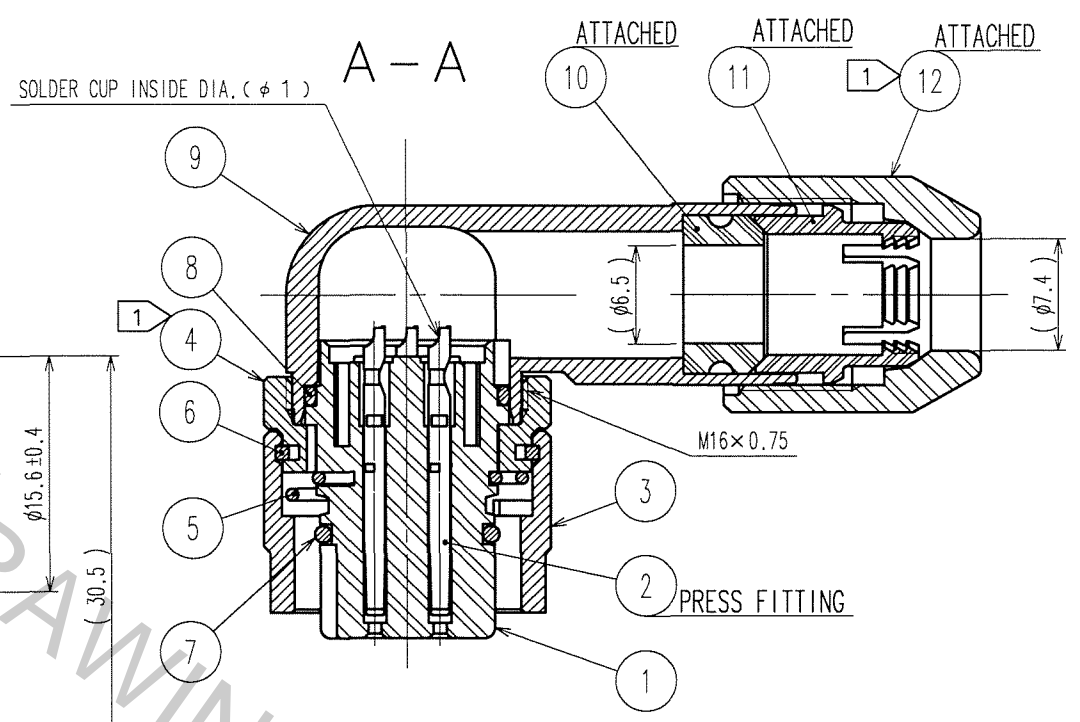
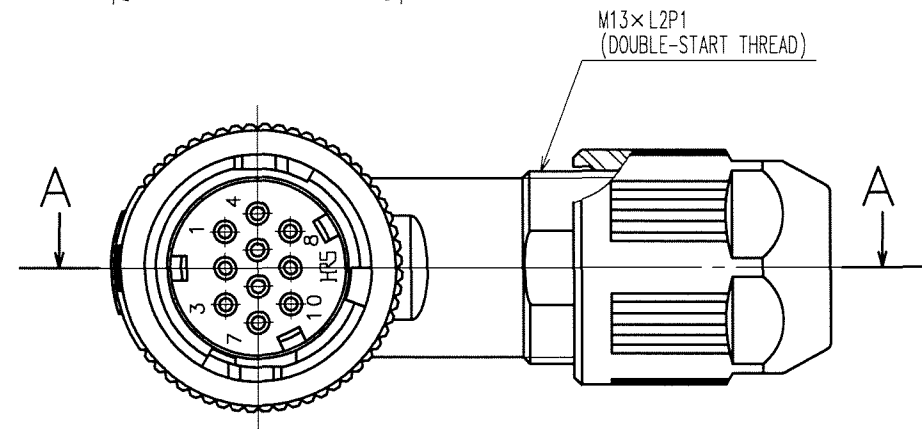
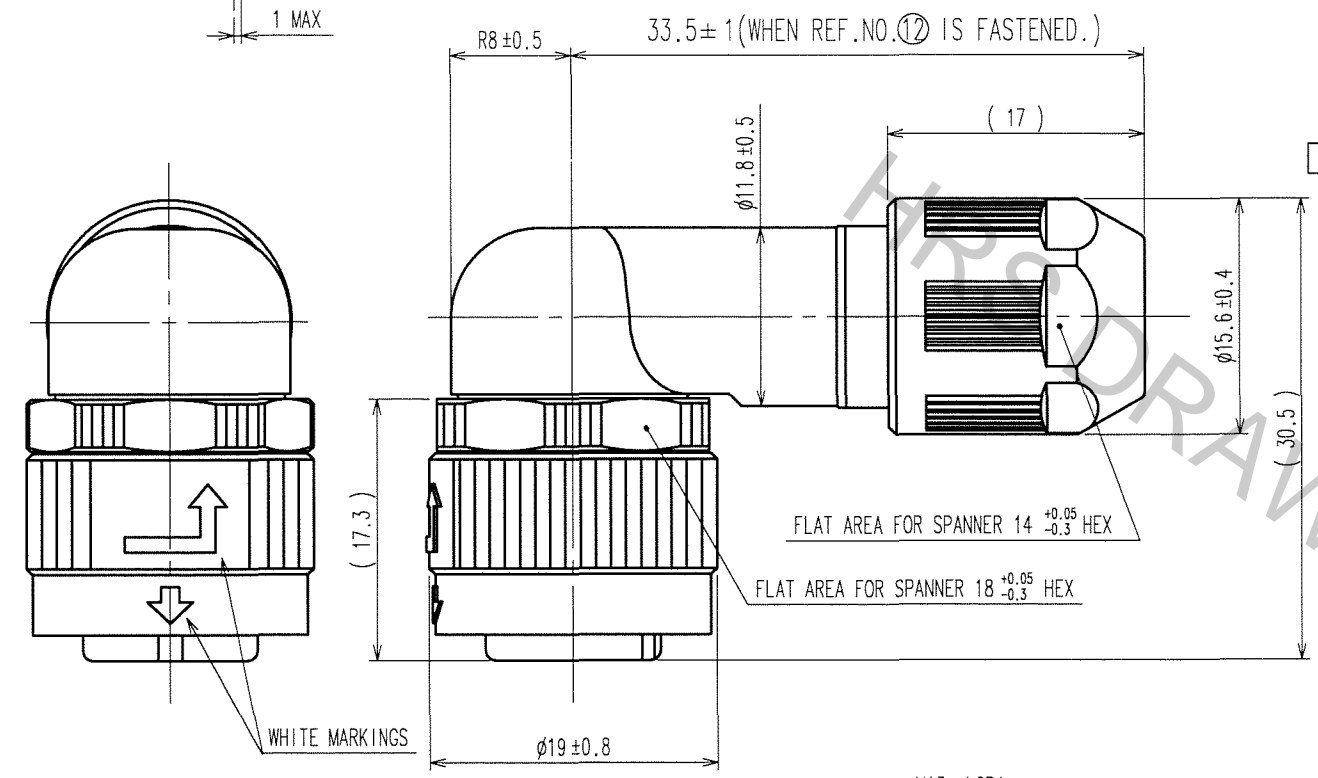
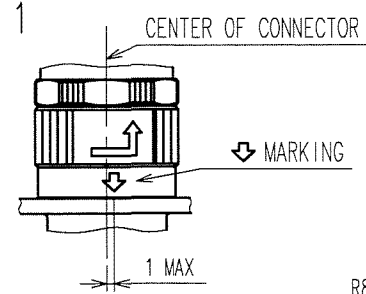


Oct.1.2018 Copyright 2018 HIROSE ELECTRIC CO., LTD. All Rights Reserved.
In case that the application demands a high level of reliability, such as automotive,
please contact a company representative for further information.

△FIG. 1



MATING CONDITION (1:1)
(WHEN REF.NO. 12 IS FASTENED)

NOTES 1 THE RECOMMENDED TIGHTENING TORQUE, ADHESIVE AND PRIMER FOR M16×0.75 PORTION OF REF NO. 4 AND 9 AND M13×L2P1 PORTION OF REF NO. 9 AND 12 ARE AS FOLLOWS.
THE ADHESIVE AND PRIMER SHOULD BE ATTACHED ON THE MALE SCREW PORTION OF REF NO. 9.
TIGHTENING TORQUE: 0.9 TO 1 N·m.
ADHESIVE: LOCTITE 242 MADE BY HENKEL JAPAN LTD.
PRIMER: LOCK PRIMER 7649, MADE BY HENKEL JAPAN LTD. (ONLY M13×L2P1)
2 ROTATION EXAMPLES ARE SHOWN FOR REF.NO. 1, 4, 9, AND 12.
3 THE RECOMMENDED CABLE: UL20276-SB(FLEX)5×23AWG+1P×25AWG MADE BY HITACHI CABLE LTD.
4 CONDUIT IS NOT APPLICABLE TO THIS CONNECTOR.
△5 MAKE SURE THAT MARKING IS POSITIONED WITHIN 1 FROM THE CENTER OF CONNECTOR AS SHOWN IN FIG.1. WHEN MATED TO THE APPLICABLE RECEPTACLE, OTHERWISE, THE CONNECTORS ARE NOT COMPLETELY MATED, AND INSERT THIS PLUG TO THE RECEPTACLE TO THE END UNTIL THE MARKING IS LOCATED IN THE CENTER OF THE CONNECTOR.

COUNT	DESCRIPTION OF REVISIONS	BY	CHKD	DATE	COUNT	DESCRIPTION OF REVISIONS	BY	CHKD	DATE
2	DIS-C-000633	H.Z	K.E	07.05.28					

5	STAINLESS STEEL		12	POLYPHENYLENE SULFIDE (BLACK)	UL94V-0
4	ZINC ALLOY	BLACK CHROME PLATING	11	POLYAMIDE (WHITE)	UL94V-0
3	ZINC ALLOY	BLACK CHROME PLATING	10	HYDROGENATION ACRYLONITRILE BUTADIENE RUBBER (BLACK)	
2	PHOSPHOR BRONZE	CONTACT AREA :GOLD 0.2μm MIN. TERMINAL AREA:GOLD FLASH. UNDER PLATING:NICKEL 2μm MIN.	9	ALUMINIUM ALLOY	BLACK CHROMATE TREATMENT (TRIVALENT CHROMIUM)
1	POLYPHENYLENE SULFIDE (BLACK)	UL94V-0	8	FLUORO RUBBER (BLACK)	
			7	FLUORO RUBBER (BLACK)	
			6	PHOSPHOR BRONZE	NICKEL PLATING

CODE NO. (OLD) CL	DRAWN M. SATO 07.04.03	DESIGNED H. ZENBA 07.04.03	CHECKED K. EZAWA 07.04.03	APPROVED M. SATO 07.04.03	RELEASED .
SCALE 2 : 1 UNITS mm	DRAWING NO. EDC3-114025-71 HRS HIROSE ELECTRIC CO., LTD	PART NO. HR34B-12WLPA-10S(71)	CODE NO. CL134-0005-0-71	1/1	

TO
R