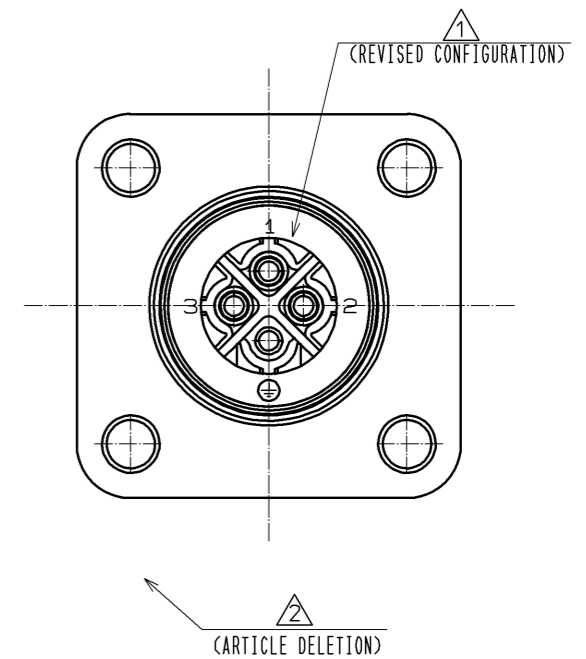
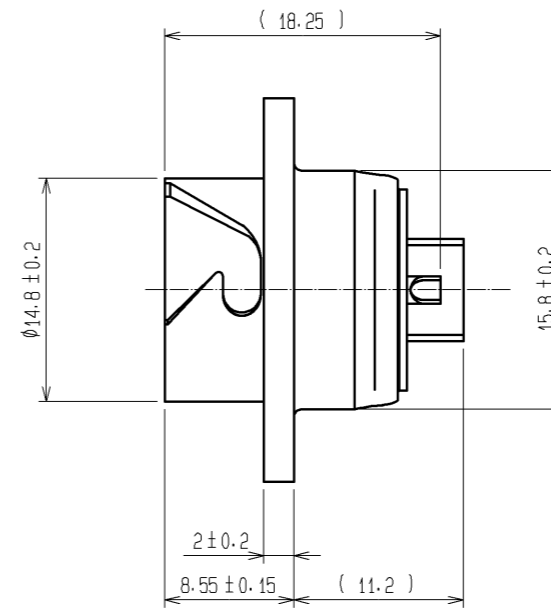
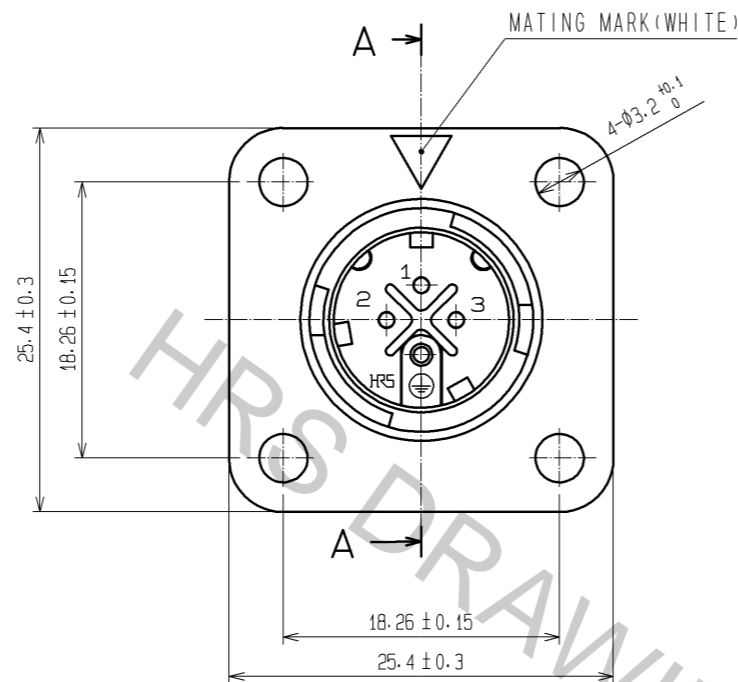
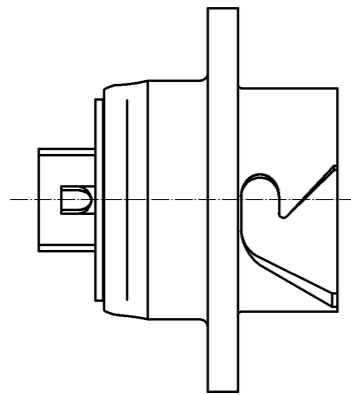
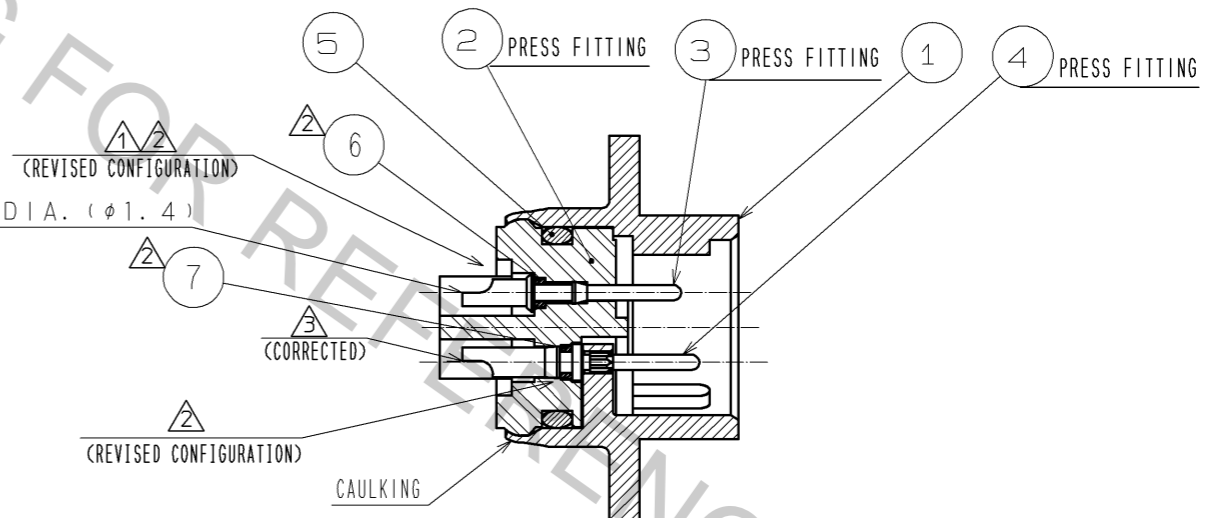


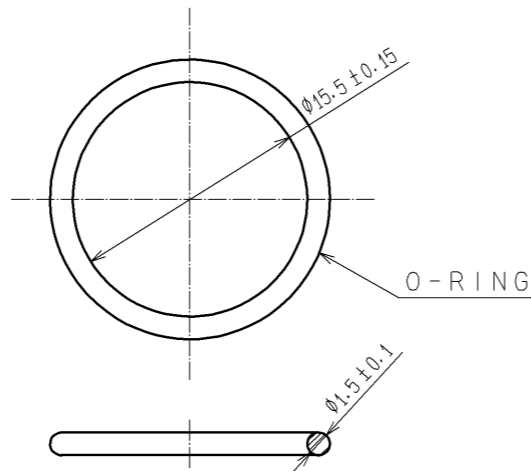
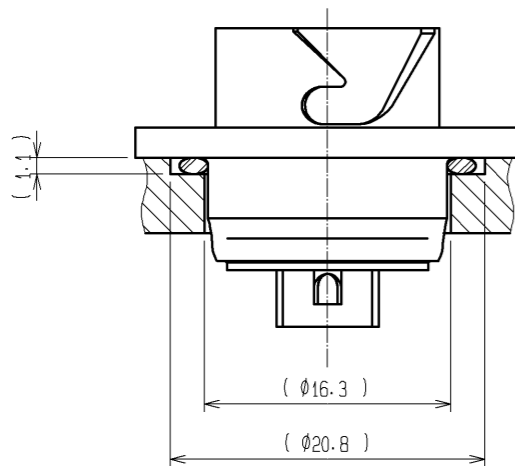
Oct.1.2018 Copyright 2018 HIROSE ELECTRIC CO., LTD. All Rights Reserved.  
In case that the application demands a high level of reliability, such as automotive,  
please contact a company representative for further information.



A-A



NOTES 1 CHECK THAT THE O-RING IS PROPERLY SET AT THE GROOVE OF THE DEVICE.  
WHILE MOUNTING THE CONNECTOR, MAKE SURE THAT THE O-RING IS NOT CAUGHT.



PANEL CUTOUT AND O-RING (REFERENCE)

4	BRASS	SILVER PLATING 2μm MIN			
3	BRASS	SILVER PLATING 2μm MIN	7	FLUORO RUBBER (BLACK)	
2	POLYPHENYLENE SULFIDE (BLACK)	UL94V-0	6	FLUORO RUBBER (BLACK)	
1	ZINC ALLOY	BLACK CHROMATE TREATMENT (Cr3)	5	FLUORO RUBBER (BLACK)	
NO.	MATERIAL	FINISH . REMARKS	NO.	MATERIAL	FINISH . REMARKS
UNITS mm	⊙	SCALE 2 : 1	COUNT 1	DESCRIPTION OF REVISIONS DIS-C-001248	DESIGNED HT. ZENBA
HRS HIROSE ELECTRIC CO., LTD.		APPROVED : MO. SATOH	08. 05. 19	DRAWING NO.	EDC3-114980-00
		CHECKED : SI. MATSUZAKI	08. 05. 19	PART NO.	HR34B-12WRB-4P-X
		DESIGNED : HT. ZENBA	08. 05. 15	CODE NO.	CL134-0024-4-00
		DRAWN : HT. ZENBA	08. 05. 15		