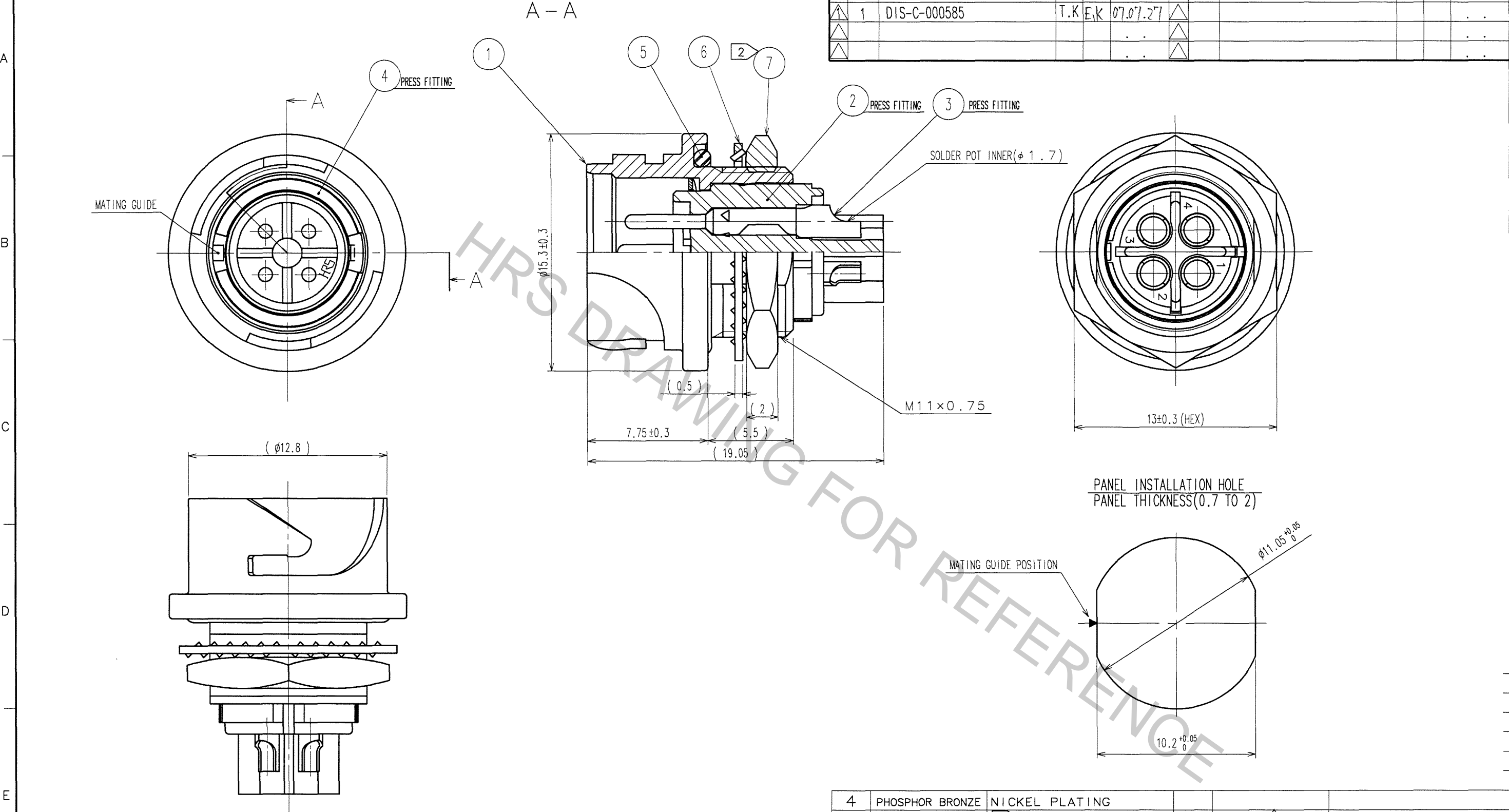
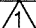
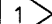




Oct.1.2018 Copyright 2018 HIROSE ELECTRIC CO., LTD. All Rights Reserved.
In case that the application demands a high level of reliability, such as automotive,
please contact a company representative for further information.

5					7								
COUNT	DESCRIPTION OF REVISIONS			BY	CHKD	DATE	COUNT	DESCRIPTION OF REVISIONS			BY	CHKD	DATE
1	DIS-C-000585			T.K	E.K	07.07.27							. .
					
					



- NOTES
- 1 PLATING(REF.NO. ③)
CONTACT AREA : GOLD 0.2μ m min
OTHERS : GOLD AND NICKEL
UNDER PLATING : NICKEL 2μ m min
 - 2 THE RECOMMENDED CLAMP TORQUE OF REF.NO. ⑦ TO BE 1.5 TO 2N·m.
THREAD LOCKER TO THE THREADED PORTION OF REF.NO. ① IS RECOMMENDED TO PREVENT REF.NO. ⑦ FROM LOOSING.
RECOMMENDED THREAD LOCKER:LOCTITE 271, HENKEL JAPAN LTD.
 - 3 WHEN THIS CONNECTOR IS MOUNTED ON TO PANEL, BE CAREFUL REF.NO. ⑤ IS ASSEMBLED SURELY INTO THE GROOVE OF REF.NO. ⑤ AS SHOWN IN THIS FIGURE TO KEEP WATERPROOF EFFECTIVENESS.

4	PHOSPHOR BRONZE	NICKEL PLATING		7	BRASS 	NICKEL PLATING	
3	COPPER ALLOY			6	PHOSPHOR BRONZE	NICKEL PLATING	
2	PPS	(BLACK)	UL94V-0	5	CHLOROPRENE RUBBER	(BLACK)	
1	ZINC ALLOY	NICKEL PLATING					
NO.		MATERIAL		FINISH, REMARKS			
CODE NO. (OLD)				DRAWN		DESIGNED	
CL				K.ABE		H.ZEBA	
				'05. 5.11		'05. 5.13	
						M.SATO	
						M.YOSHIDA	
						'05. 5.16	
						. . .	
 		DRAWING NO.		PART NO.			
SCALE		EDC3-114244		LF10WBR-4P			
4 : 1							
UNITS		HRS		CODE NO.			
mm		HIROSE ELECTRIC CO., LTD		CL136-1005-8			
				1/1			

TO
R