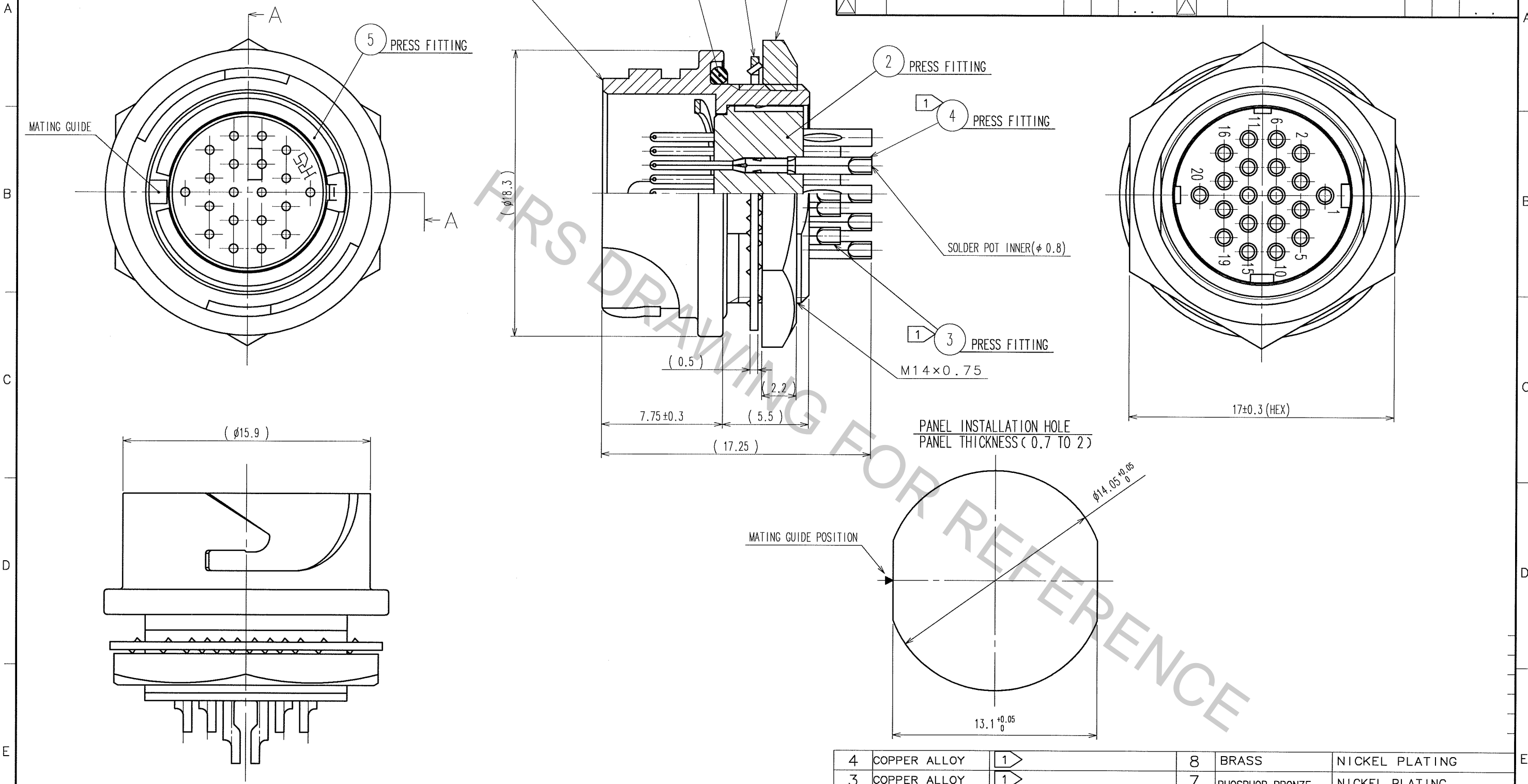


Oct.1.2018 Copyright 2018 HIROSE ELECTRIC CO., LTD. All Rights Reserved.
In case that the application demands a high level of reliability, such as automotive,
please contact a company representative for further information.



COUNT	DESCRIPTION OF REVISIONS	BY	CHKD	DATE	COUNT	DESCRIPTION OF REVISIONS	BY	CHKD	DATE

NOTES ① PLATING(REF.NO.③,④)
CONTACT AREA : GOLD 0.2μm min
OTHERS : GOLD AND NICKEL
UNDER PLATING : NICKEL 2μm min
② THE RECOMMENDED CLAMP TORQUE OF REF.NO.⑧ TO BE 2 TO 2.5N·m.
THREAD LOCKER TO THE THREADED PORTION OF REF.NO.① IS RECOMMENDED TO PREVENT REF.NO.⑧ FROM LOOSING.
RECOMMENDED THREAD LOCKER:LOCTITE 271, HENKEL JAPAN LTD.
③ WHEN THIS CONNECTOR IS MOUNTED ON TO PANEL, BE CAREFUL REF.NO.⑥ IS ASSEMBLED SURELY
INTO THE GROOVE OF REF.NO.⑥ AS SHOWN IN THIS FIGURE TO KEEP WATERPROOF EFFECTIVENESS.

4	COPPER ALLOY	①	8	BRASS	NICKEL PLATING
3	COPPER ALLOY	①	7	PHOSPHOR BRONZE	NICKEL PLATING
2	PPS	(BLACK)	6	CHLOROPRENE RUBBER	(BLACK)
1	ZINC ALLOY	NICKEL PLATING	5	PHOSPHOR BRONZE	NICKEL PLATING
NO.	MATERIAL	FINISH, REMARKS	NO.	MATERIAL	FINISH, REMARKS
CODE NO.(OLD) CL			DRAWN	DESIGNED	CHECKED
			kabe	H.Zemba	M.Sato
			05.5.11	05.05.12	05.5.13
					05.05.16
DRAWING NO. EDC3-114398			PART NO. LF13WBR-20P		
SCALE 4 : 1			CODE NO. CL136-1009-9		
UNITS mm					
HRS HIROSE ELECTRIC CO., LTD					

TO
R