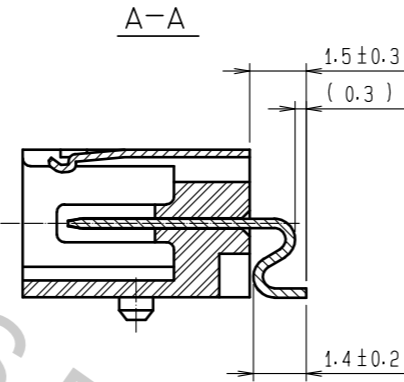
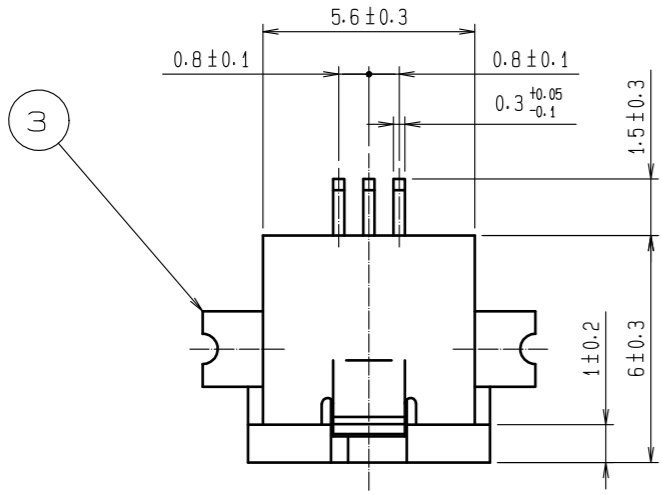
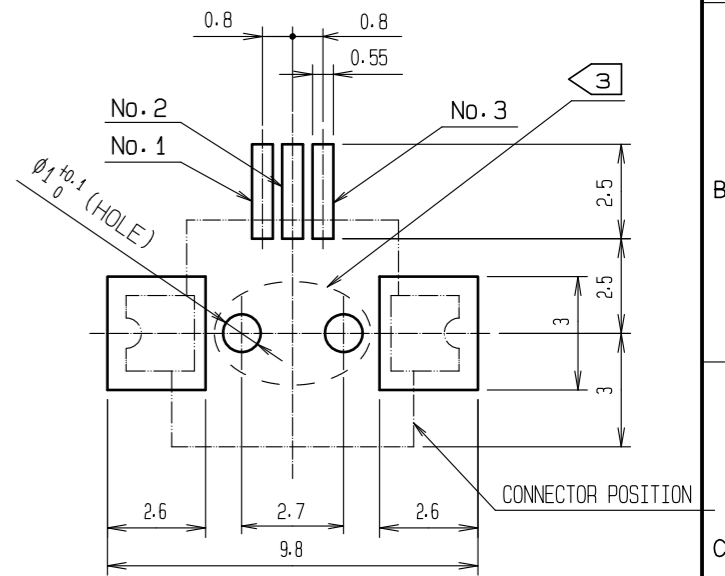


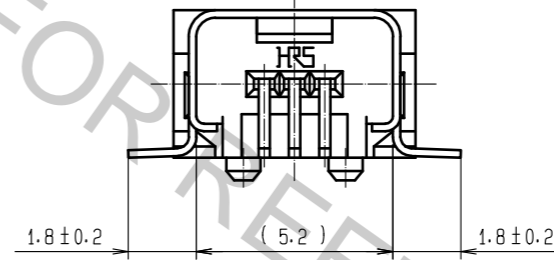
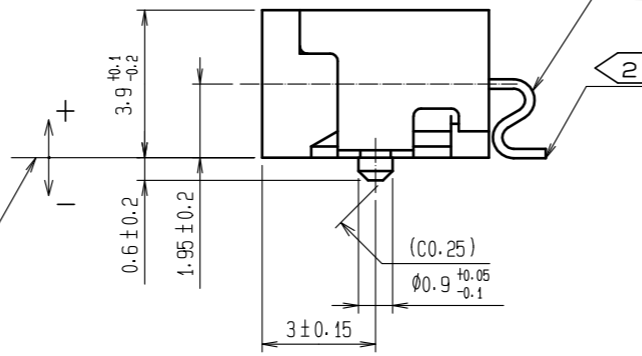
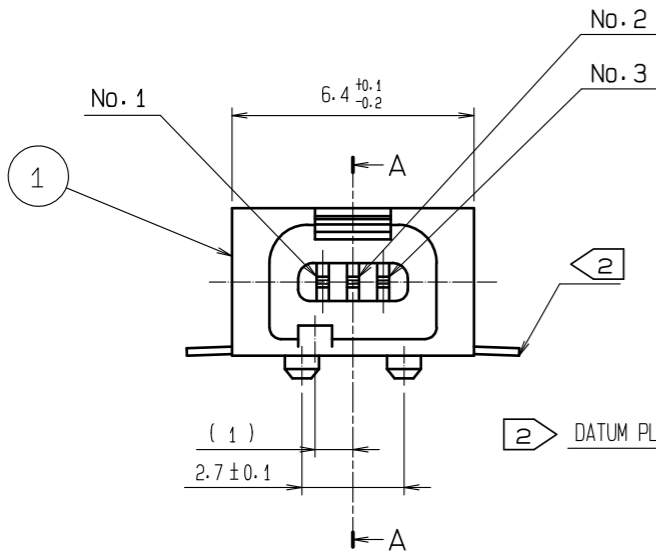
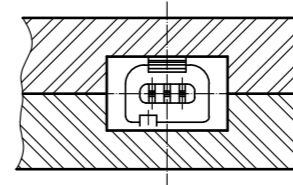
Oct.1.2018 Copyright 2018 HIROSE ELECTRIC CO., LTD. All Rights Reserved.
 In case that the application demands a high level of reliability, such as automotive,
 please contact a company representative for further information.



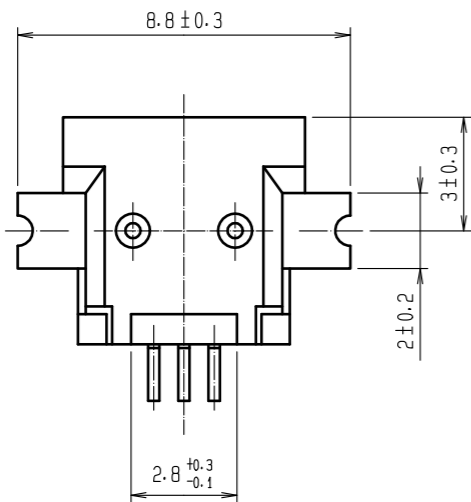
RECOMMENDED PCB HOLE PATTERN
(REFERENCE)



3
FIXED BY EQUIPMENT
(REFERENCE)



- NOTES
- 1 POLARIZATION IS AS SHOWN ON CHART-1.
 - 2 COPLANARITY(INCLUDING METAL FITTING)SHALL BE 0 FROM DATUM PLANE.
 - 3 FIXING TO PCB OF THIS PRODUCT IS SOLDER TYPE.
WE RECOMMEND TO USE ADHESIVE ON PCB SURFACE.
AND FIX THIS PRODUCT BY THE BODY OF EQUIPMENT ITSELF.
 - 4 DIRECTION FOR USE.
·PLEASE DO NOT USE FOR THE PURPOSE OF INTERRUPTING THE CURRENT.



1 CHART-1 POLARIZATION

POLARIZATION	
No. 1 (+)	POWER
No. 2 (+)	SIGNAL
No. 3 (-)	POWER

2	COPPER ALLOY	CONTACT AREA: PALLADIUM NICKEL 0.7µm MIN. +GOLD 0.2µm MIN.	3	STAINLESS STEEL	GOLD PLATING 0.03µm MIN. UNDER PLATING NICKEL 0.2µm MIN.			
1	POLYAMIDE	BLACK UL94V-0						
NO.	MATERIAL	FINISH . REMARKS	NO.	MATERIAL	FINISH . REMARKS			
UNITS	mm	SCALE	5 : 1	COUNT	DESCRIPTION OF REVISIONS	DESIGNED	CHECKED	DATE
APPROVED : NM. NISHIMATSU		15.10.27		DRAWING NO.		EDC-120677-30-00		
CHECKED : NM. NISHIMATSU		15.10.27		PART NO.		MQ172-3PA(30)		
DESIGNED : KN. ICHIKAWA		15.10.27		CODE NO.		CL206-0950-4-30		
DRAWN : KN. ICHIKAWA		15.10.27						

HRS HIROSE ELECTRIC CO., LTD.