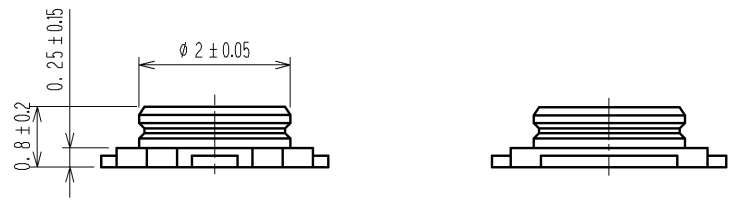
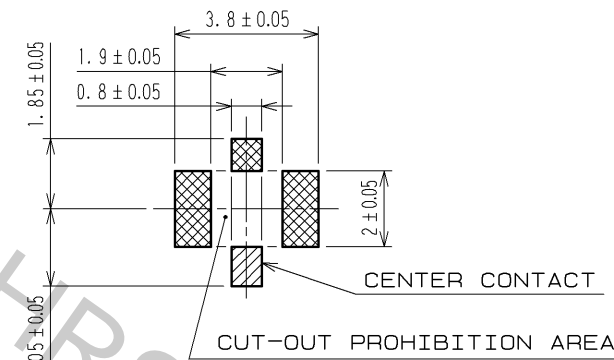
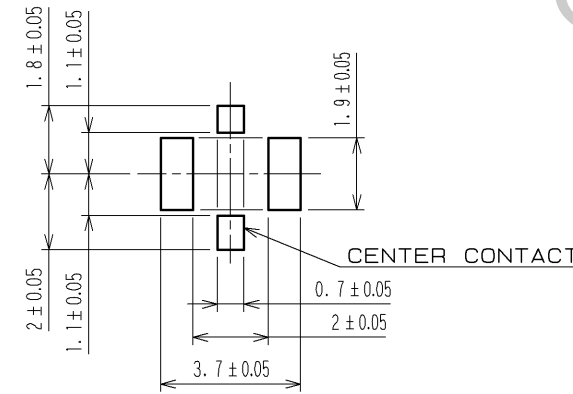
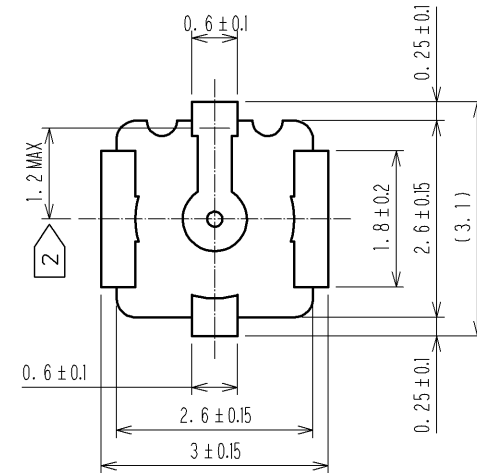


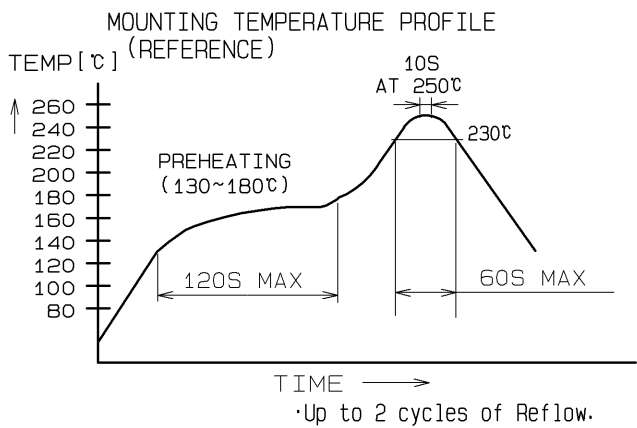
RECOMMENDED PC BOARD  
PATTERN DRAWING (5:1)



RECOMMENDED METAL MASK  
PATTERN DRAWING (5:1)



THICKNESS: 0.1mm/0.12mm



NOTE  
MOUNTING TEMPERATURE PROFILE VARIES ACCORDING  
TO BOARD SIZE, SOLDER TYPE APPLIED AND SOLDER  
THICKNESS.

- NOTES:
- 1: THE QUANTITY OF N.FL-R-SMT-1(01)  
IS 100 CONNECTORS PER PACK.
  - 2: THIS DIMENSION SHOWS THE ALLOWABLE RANGE THAT  
THE RESIN IS PUT OVER THE CENTER CONTACT.
  - 3: LEAD CO-PLANARITY SHALL BE 0.1MAX.
  - 4: FOR THE POSSIBILITY OF BREAKAGE OR DEFORMATION  
DO NOT MATE THIS CONNECTOR WITH PARTNER, N.FL-  
LP-040 BEFORE MOUNTING ON PC BOARD.

RoHS COMPLIANT

2	BRASS	GOLD PLATING			
1	PHOSPHOR BRONZE	SILVER PLATING	3	LCP	(BLACK), UL94V-0
NO.	MATERIAL	FINISH, REMARKS	NO.	MATERIAL	FINISH, REMARKS
UNITS mm		SCALE 10:1	COUNT 1	DESCRIPTION OF REVISIONS	DESIGNED CHECKED DATE
		APPROVED: MH. YAMANE	08.07.01	DRAWING NO.	EDC3-310945-01
		CHECKED: NK. NINOMIYA	08.07.01	PART NO.	N.FL-R-SMT-1(01)
		DESIGNED: TS. SAWAI	08.07.01	CODE NO.	CL331-0332-3-01
		DRAWN: TS. SAWAI	08.07.01		