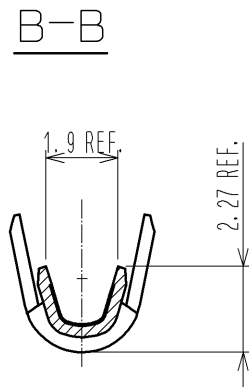
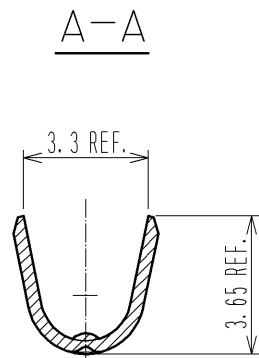
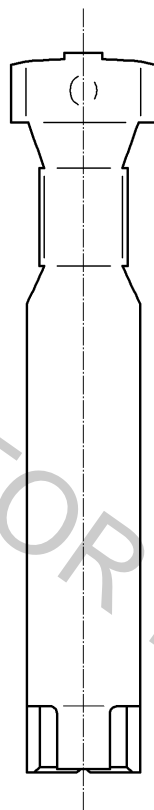
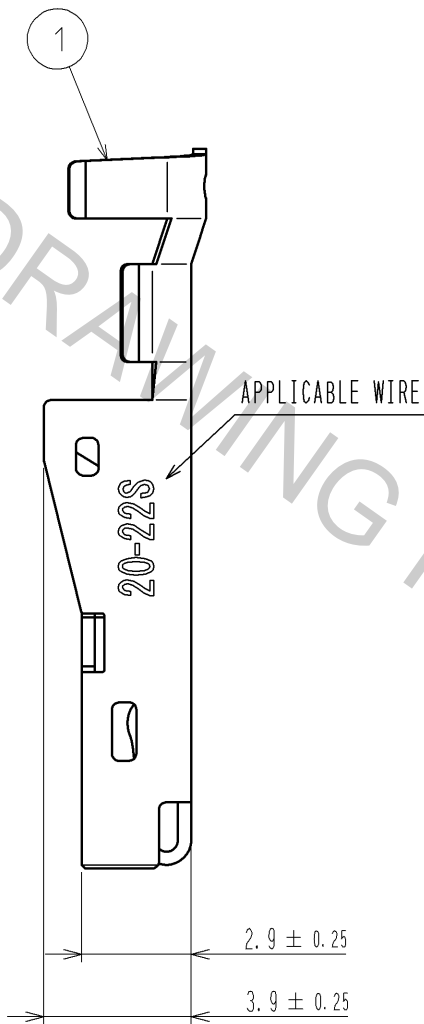
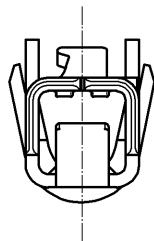
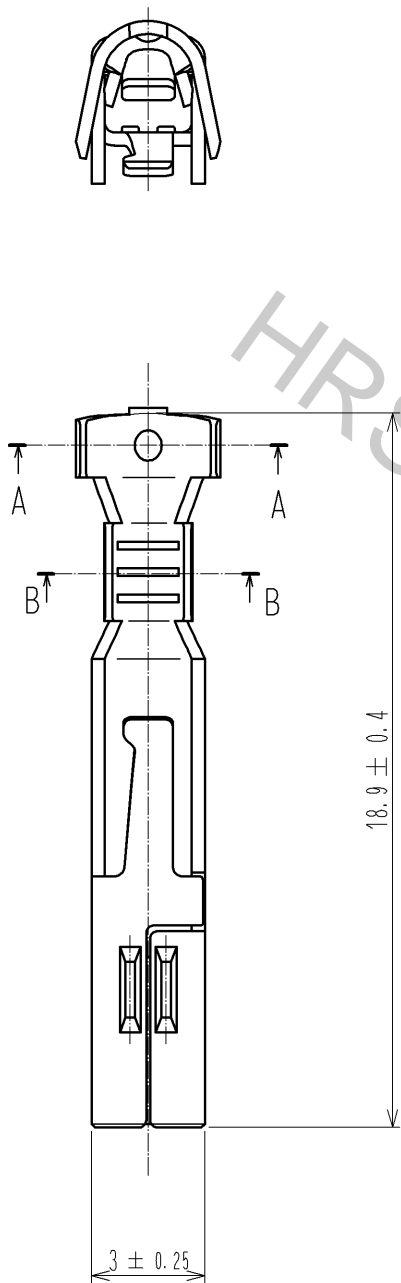
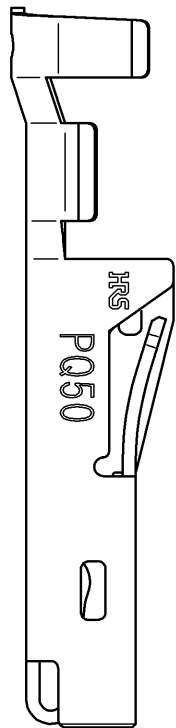


Oct.1.2018 Copyright 2018 HIROSE ELECTRIC CO., LTD. All Rights Reserved.
In case that the application demands a high level of reliability, such as automotive,
please contact a company representative for further information.



- NOTES 1. APPLICABLE WIRE IS AWG #20~#22. (UL1007, UL1015)
INSULATION DIAMETER ϕ 2.70mm MAX.
2. APPLICABLE CRIMPING MACHINE AND CRIMPING CONDITIONS
(CRIMP HEIGHT etc.) WILL BE SPECIFIED ACCORDING TO
AWG # OR WIRE APPLIED.
3. ONE PACKAGE CONSISTS OF 100 PCS.
4. REFER TO ATAI-E3038 FOR CRIMP QUALITY STANDARDS.

NO.		MATERIAL		FINISH . REMARKS		NO.		MATERIAL		FINISH . REMARKS	
UNITS		mm		SCALE		COUNT		DESCRIPTION OF REVISIONS		DESIGNED	
mm		5 : 1		1		DIS-E-004910		TY. MIURA		NM. NISHIMATSU	
DATE		14. 01. 20		APPROVED : RI. TAKAYASU		12. 12. 11		DRAWING NO.		EDC3-128192-00	
CHECKED : AH. KODAMA		12. 12. 11		DESIGNED : TY. MIURA		12. 12. 10		PART NO.		PQ50-2022SCA	
DRAWN : TY. MIURA		12. 12. 10		CODE NO.		CL236-2045-6-00		1		1	