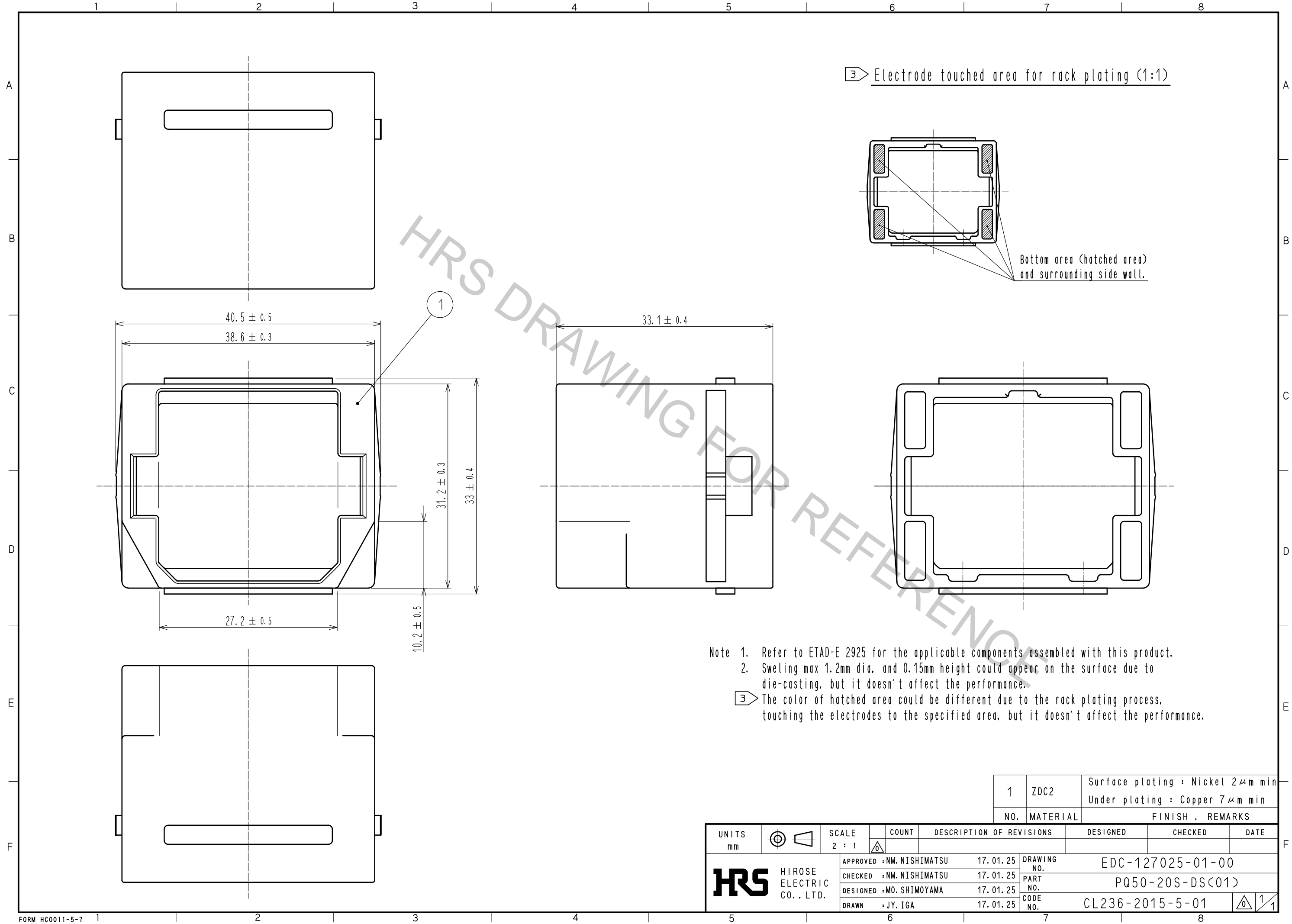


Oct.1.2018 Copyright 2018 HIROSE ELECTRIC CO., LTD. All Rights Reserved.
In case that the application demands a high level of reliability, such as automotive,
please contact a company representative for further information.



Note 1. Refer to ETAD-E 2925 for the applicable components assembled with this product.
2. Sweling max 1.2mm dia. and 0.15mm height could appear on the surface due to die-casting, but it doesn't affect the performance.
3 The color of hatched area could be different due to the rack plating process, touching the electrodes to the specified area, but it doesn't affect the performance.

1		ZDC2	Surface plating : Nickel 2μm min Under plating : Copper 7μm min			
NO.		MATERIAL	FINISH . REMARKS			
UNITS mm		SCALE 2 : 1	COUNT	DESCRIPTION OF REVISIONS		DESIGNED
HRS		HIROSE ELECTRIC CO., LTD.	APPROVED : NM. NISHIMATSU 17.01.25	DRAWING NO. EDC-127025-01-00		CHECKED
			CHECKED : NM. NISHIMATSU 17.01.25	PART NO. PQ50-20S-DSC01)		DATE
			DESIGNED : MO. SHIMOYAMA 17.01.25	CODE NO. CL236-2015-5-01		
			DRAWN : JY. IGA 17.01.25			