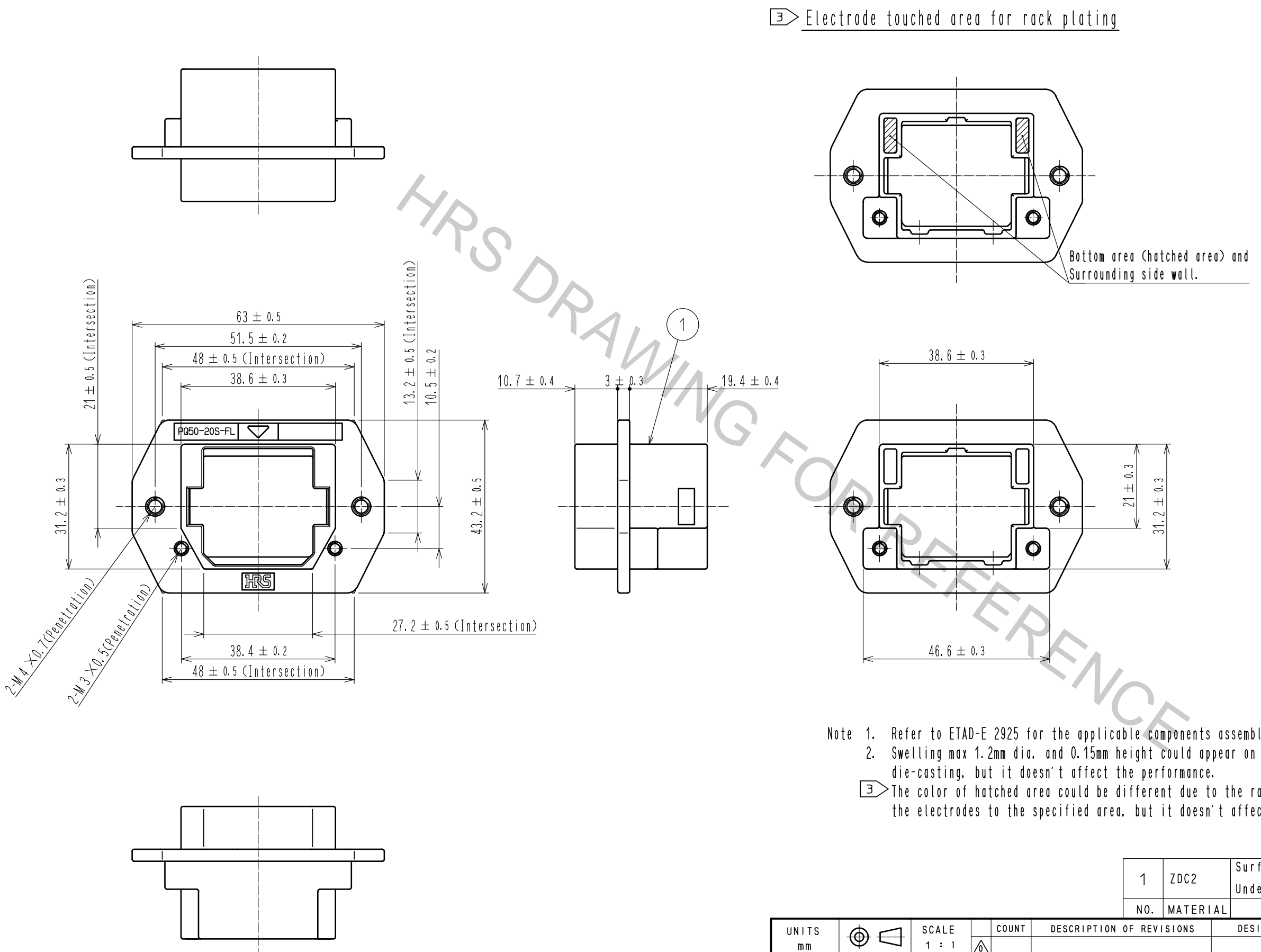


Oct.1.2018 Copyright 2018 HIROSE ELECTRIC CO., LTD. All Rights Reserved.
In case that the application demands a high level of reliability, such as automotive,
please contact a company representative for further information.



3 Electrode touched area for rack plating

Bottom area (hatched area) and
Surrounding side wall.

- Note 1. Refer to ETAD-E 2925 for the applicable components assembled with this product.
2. Swelling max 1.2mm dia. and 0.15mm height could appear on the surface due to die-casting, but it doesn't affect the performance.
3 The color of hatched area could be different due to the rack plating process, touching the electrodes to the specified area, but it doesn't affect the performance.

1		ZDC2	Surface plating : Nickel 2μm min Under plating : Copper 7μm min			
NO.		MATERIAL	FINISH . REMARKS			
UNITS		mm	SCALE	1 : 1	COUNT	DESCRIPTION OF REVISIONS
HRS		HIROSE ELECTRIC CO., LTD.	APPROVED	NM. NISHIMATSU	17.01.25	DRAWING NO.
			CHECKED	NM. NISHIMATSU	17.01.25	PART NO.
			DESIGNED	MO. SHIMOYAMA	17.01.25	CODE NO.
			DRAWN	JY. IGA	17.01.25	
					EDC-126915-01-00	
					PQ50-20S-FL(01)	
					CL236-2001-0-01	
					1/1	