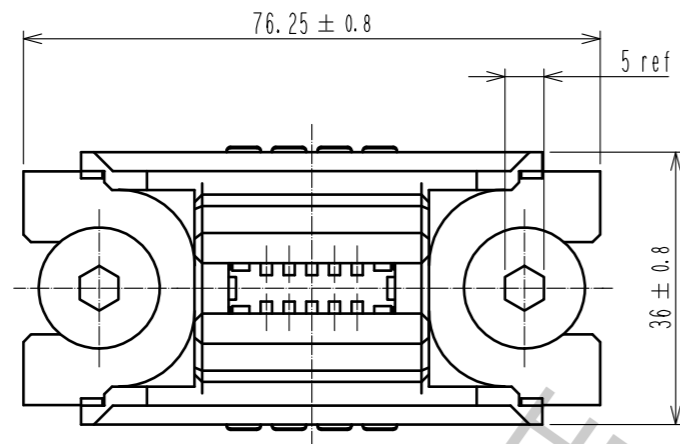
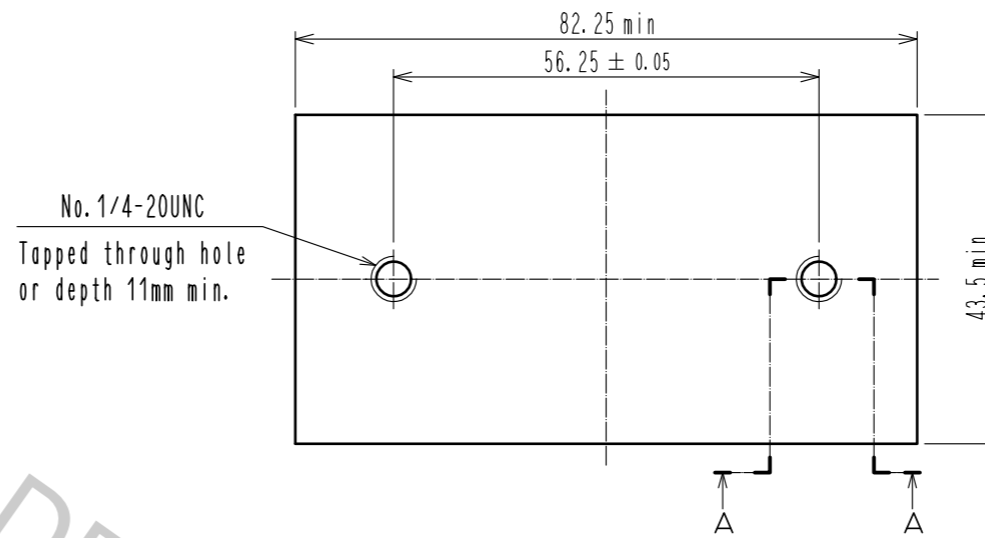


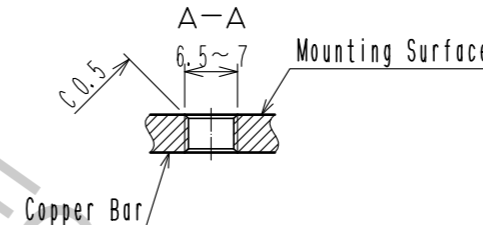
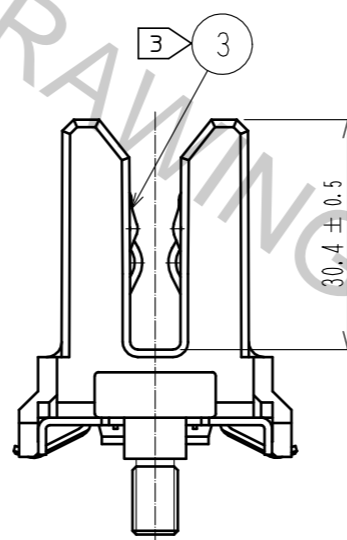
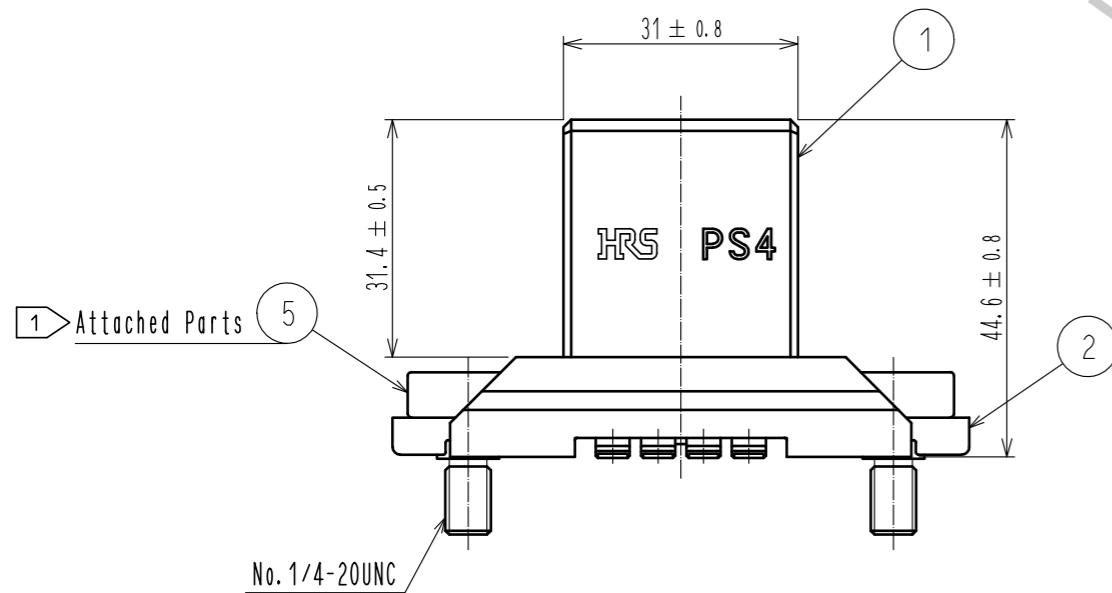
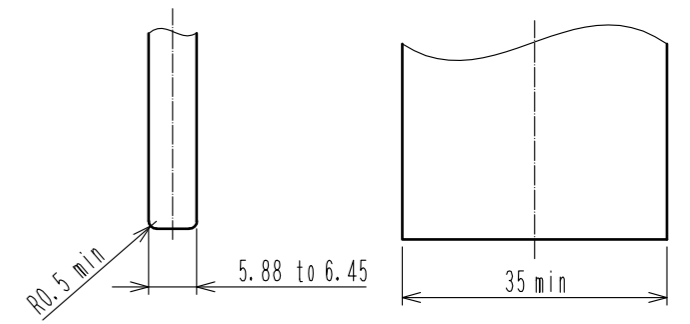
Oct.1.2018 Copyright 2018 HIROSE ELECTRIC CO., LTD. All Rights Reserved.
 In case that the application demands a high level of reliability, such as automotive,
 please contact a company representative for further information.



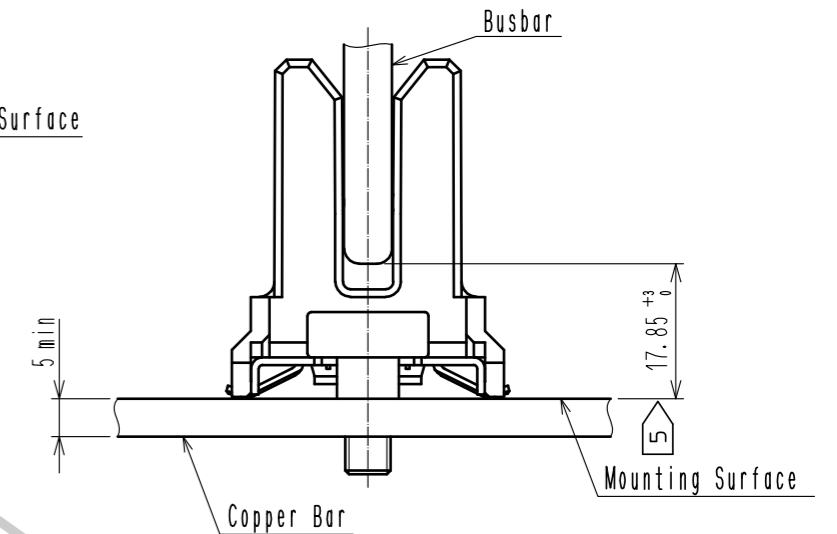
Copper bar Dimensions
(connector mounting bar)



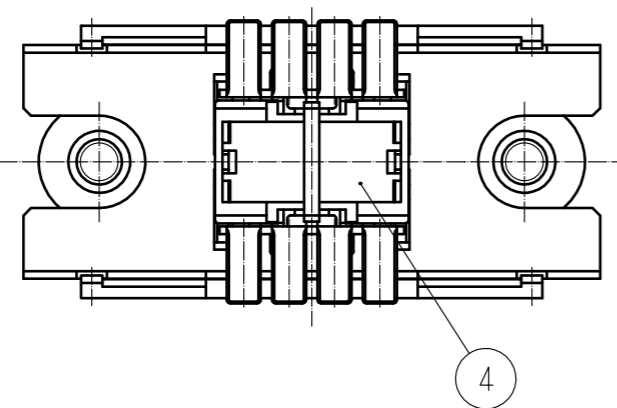
Busbar Dimensions
(mating busbar)



View Of Mounting State



- Notes
- ① The recommended tightening torque for the Ref No.5 is 5 N·m.
 - ② This product has floating range of ±2mm from the center of the connector.
 - ③ There are some cases that plating color of Ref No.3 may change from silver to blackish brown due to chemical reaction by sulfure in the atmosphere.
 - ④ Busbar and copper bar shall be either silver plating.
 - ⑤ The recommended distance between installation site and tip of busbar shall be 17.85⁺³mm.



2	Stainless Steel		5	Steel	Nickel Plating : 2μm min
1	PBT	Black. UL94V-0	4	PBT	Black. UL94V-0
			3	Copper Alloy	Silver Plating : 2μm min
NO.	MATERIAL	FINISH . REMARKS	NO.	MATERIAL	FINISH . REMARKS
UNITS mm		SCALE 1 : 1	COUNT 1	DESCRIPTION OF REVISIONS DIS-E-00000752	DESIGNED MO. SHIMOYAMA
				CHECKED NM. NISHIMATSU	DATE 16.11.15
				DESIGNED MO. SHIMOYAMA	
				DRAWN MO. SHIMOYAMA	
				APPROVED RI. TAKAYASU	15.12.16
				CHECKED NM. NISHIMATSU	15.12.15
				DESIGNED MO. SHIMOYAMA	15.12.15
				DRAWN MO. SHIMOYAMA	15.12.15
				DRAWING NO. EDC-128870-00-00	
				PART NO. PS4A-6.35T	
				CODE NO. CL236-1018-0-00	
					1/1