

NOTES:

1. INSTALLATION SHALL COMPLY WITH ALL APPLICABLE NATIONAL AND LOCAL CODES.
2. SEE PRODUCT DOCUMENTATION FOR FURTHER INFORMATION.
3. FOR ADDITIONAL DETAILS REFER TO DRAWINGS FOR INDIVIDUAL COMPONENTS.

THIS DRAWING AND SPECIFICATIONS HEREIN ARE THE PROPERTY OF SCHNEIDER ELECTRIC AND SHALL NOT BE COPIED, REPRODUCED OR USED IN WHOLE OR IN PART, AS THE BASIS FOR THE MANUFACTURE OR SALE OF ITEMS WITHOUT WRITTEN PERMISSION FROM SCHNEIDER ELECTRIC. THIS DRAWING IS BASED UPON LATEST AVAILABLE INFORMATION AND IS SUBJECT TO CHANGE WITHOUT NOTICE.

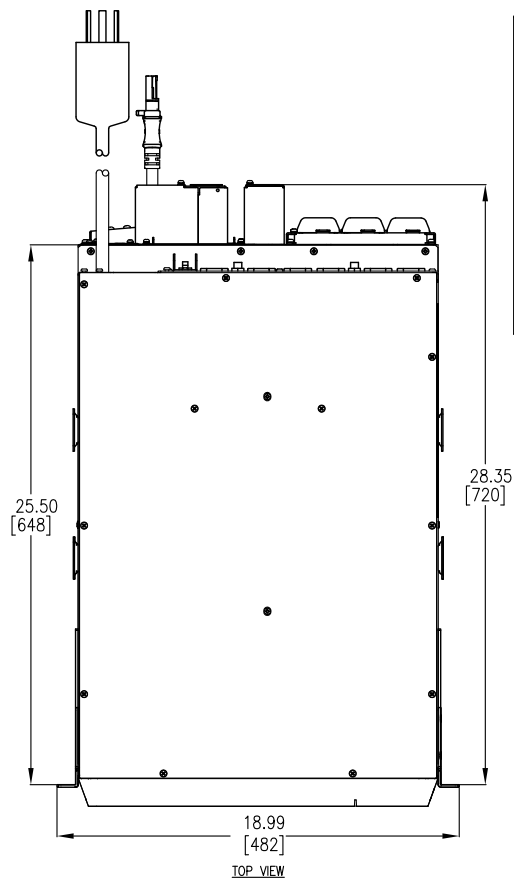


TITLE: Smart-UPS Online (SRT) w/ TRANSFORMER
SRT6KRMXLT-5KTF + SRT192RMBP - RACKMOUNT
INPUT: 208VAC, (L1+L2+G), HARDWIRE
UPS OUTPUT: 208VAC, (1) HARDWIRE, 3-WIRE (L1+L2+G),
(2) NEMA L6-30R, (1) NEMA L6-30R, (2) NEMA L6-30R
TRANSFORMER OUTPUT: 120VAC, (12) 5-20R
ISOMETRIC VIEWS

PROJECT: STD SUBMITTAL DRAWING SHEET 1 OF 4

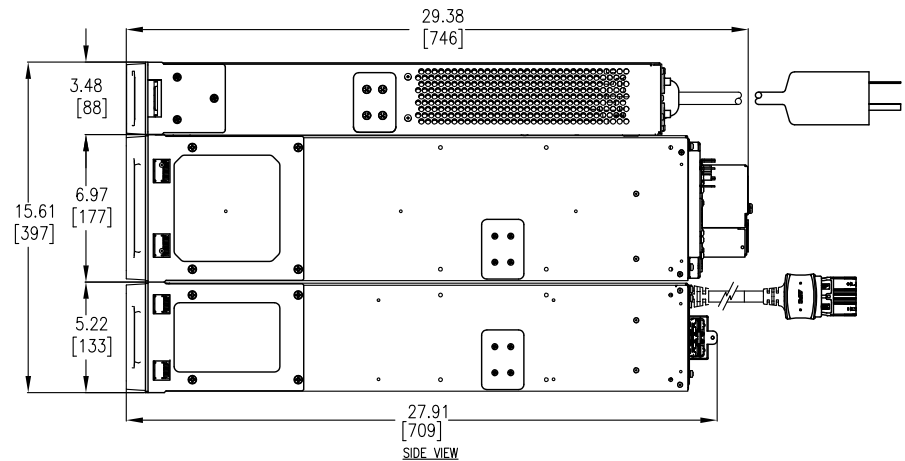
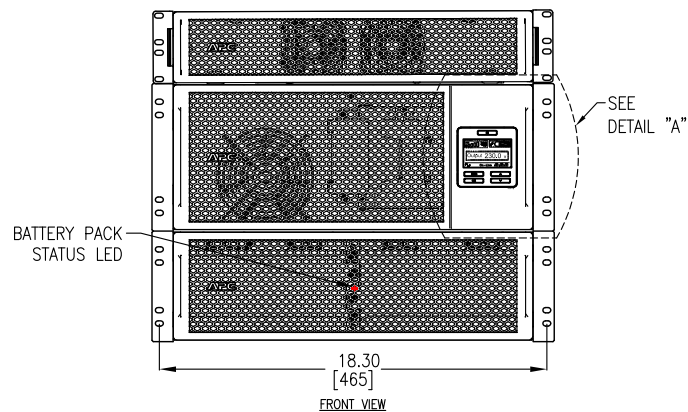
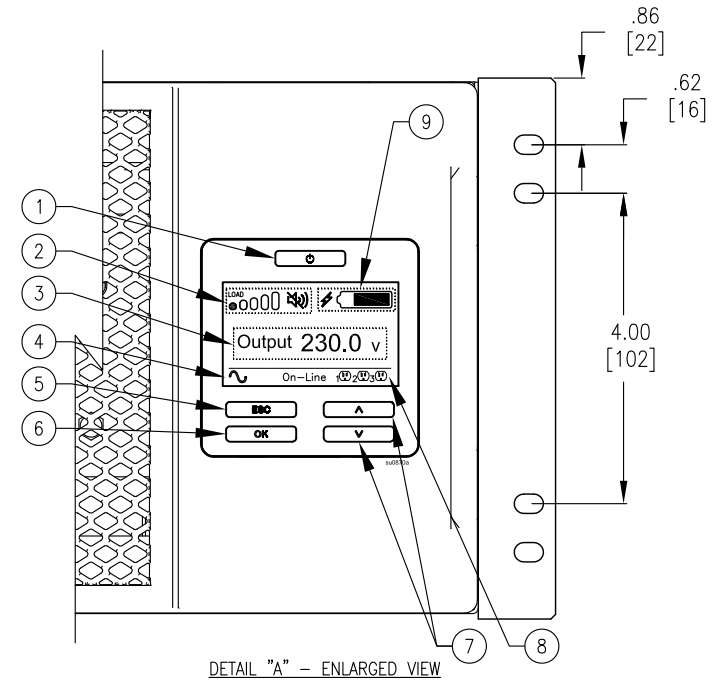
DWG NO: SRT6KRMXLT-5KTF
DRAWN BY: S CUNHA 16JUN2015
ENGINEER: E KOTLYAR 16JUN2015
APPROVED BY: K WHITE/J PRECOPIO 16JUN2015

REV 0
THIRD ANGLE PROJ



DISPLAY INTERFACE:

1. POWER "ON/OFF" BUTTON.
2. LOAD ICON, DISABLE/MUTE AUDIBLE ALARM ICON.
3. UPS STATUS INFORMATION.
4. OPERATION MODE ICONS.
5. "ESCAPE" BUTTON.
6. "OK" BUTTON.
7. "UP/DOWN" BUTTONS.
8. CONTROLLABLE OUTLET GROUP STATUS ICONS.
9. BATTERY STATUS ICONS.



NOTES:

1. INSTALLATION SHALL COMPLY WITH ALL APPLICABLE NATIONAL, STATE AND LOCAL CODES.
2. PLEASE REFER TO PRODUCT DOCUMENTATION FOR FURTHER INFORMATION.
3. UNLESS OTHERWISE SPECIFIED, ALL DIMENSIONS ARE IN INCHES [MILLIMETERS].
4. WEIGHT OF UNIT IS 452.20 LBS [205.60 KG].
5. CABLE ENTRY FROM REAR SIDE OF UNIT.

THIS DRAWING AND SPECIFICATIONS HEREIN ARE THE PROPERTY OF SCHNEIDER ELECTRIC AND SHALL NOT BE COPIED, REPRODUCED OR USED IN WHOLE OR IN PART, AS THE BASIS FOR THE MANUFACTURE OR SALE OF ITEMS WITHOUT WRITTEN PERMISSION FROM SCHNEIDER ELECTRIC. THIS DRAWING IS BASED UPON LATEST AVAILABLE INFORMATION AND IS SUBJECT TO CHANGE WITHOUT NOTICE.

Schneider
Electric

TITLE: Smart-UPS Online (SRT) w/ TRANSFORMER
SRT6KRMXL-5KTF + SRT192RMBP - RACKMOUNT
INPUT: 208VAC, (L1+L2+G), HARDWARE
UPS OUTPUT: 208VAC, (1) HARDWARE, 3-WIRE (L1+L2+G),
(2) NEMA L6-30R, (1) NEMA L6-30R, (2) NEMA L6-30R
TRANSFORMER OUTPUT: 120VAC, (12) 5-20R
MAIN MECHANICAL

PROJECT: STD SUBMITTAL DRAWING SHEET 2 OF 4

DWG NO: SRT6KRMXL-5KTF

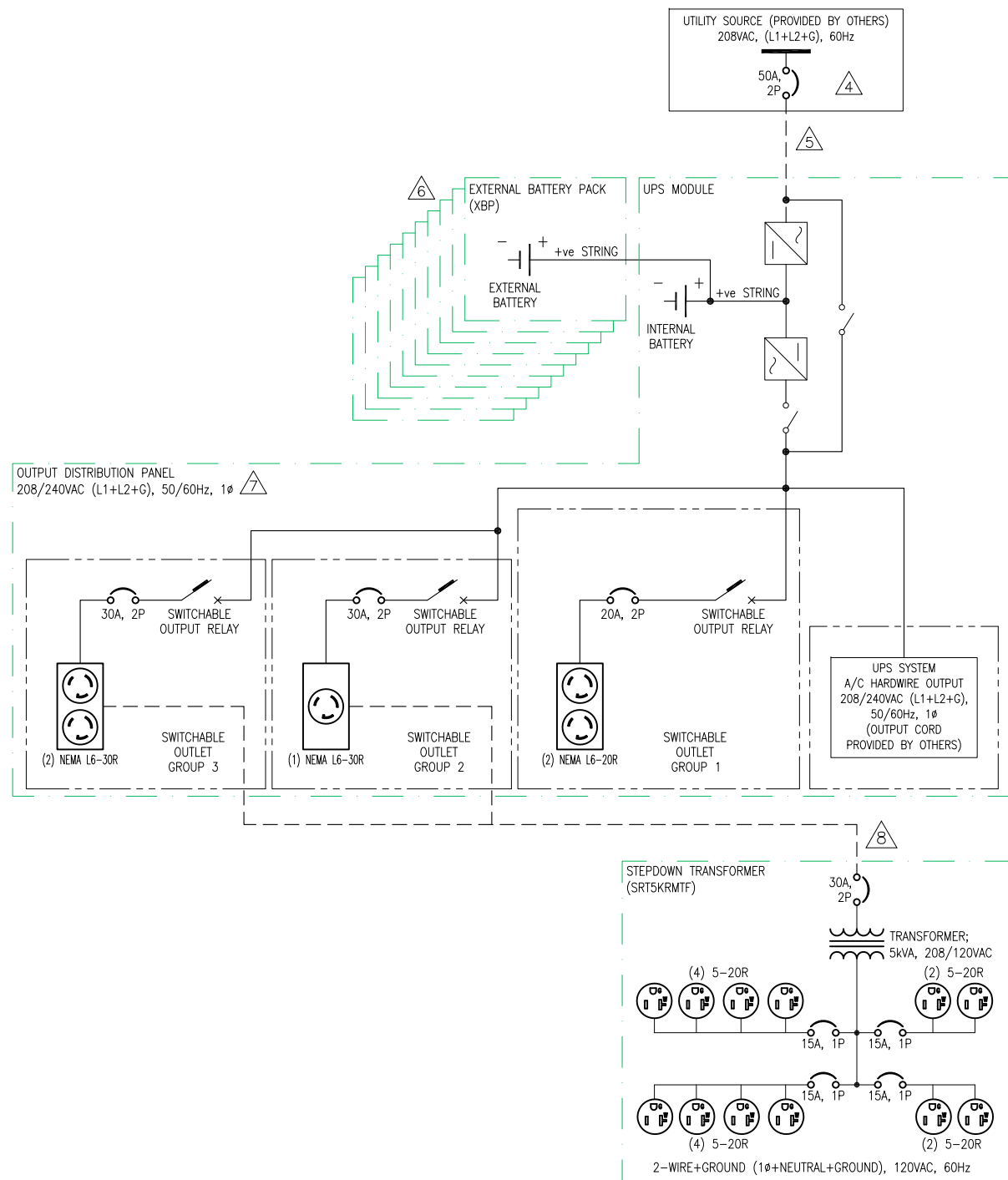
DRAWN BY: S CUNHA 16JUN2015

ENGINEER: E KOTLYAR 16JUN2015

APPROVED BY: K WHITE/J PRECOPIO 16JUN2015

REV 0

THIRD
ANGLE
PROJ



NOTES:

1. INSTALLATION SHALL COMPLY WITH ALL APPLICABLE NATIONAL, STATE AND LOCAL CODES.
2. PLEASE REFER TO PRODUCT DOCUMENTATION FOR FURTHER INFORMATION.
3. STD SUBMITTAL DRAWING DEPICTS POWER SYSTEM CONNECTIONS AND IS NOT REPRESENTATIVE OF PHYSICAL LAYOUT. PLEASE REFER TO MECHANICAL STD SUBMITTAL DRAWINGS FOR MORE SPECIFIC PHYSICAL DATA.
- △ 4. UTILITY SOURCE MUST BE NOMINAL 208VAC, (L1+L2+G), 60Hz, PROVIDED BY OTHERS.
- △ 5. DASHED LINES BETWEEN UTILITY SOURCE & THE UNIT (-----) REPRESENT CABLING PROVIDED BY OTHERS.
- △ 6. ADDITIONAL EXTERNAL BATTERY PACKS (UP TO 10), CAN BE CONNECTED TO INCREASE THE RUN TIME FURTHER.
- △ 7. OUTPUT DISTRIBUTION PANEL CONTAINS SWITCHABLE OUTPUT GROUPS. REFER TO INSTALLATION MANUAL FOR DETAILED INSTRUCTIONS.
- △ 8. DASHED LINE BETWEEN UPS AND STEP-DOWN TRANSFORMER (----) REPRESENTS POWER CORD (WITH L6-30P, TWIST-LOCK), PROVIDED BY Schneider Electric. CONNECT TO EITHER OUTLET GROUP 2 OR OUTLET GROUP 3.

THIS DRAWING AND SPECIFICATIONS HEREIN ARE THE PROPERTY OF SCHNEIDER ELECTRIC AND SHALL NOT BE COPIED, REPRODUCED OR USED IN WHOLE OR IN PART, AS THE BASIS FOR THE MANUFACTURE OR SALE OF ITEMS WITHOUT WRITTEN PERMISSION FROM SCHNEIDER ELECTRIC. THIS DRAWING IS BASED UPON LATEST AVAILABLE INFORMATION AND IS SUBJECT TO CHANGE WITHOUT NOTICE.

Schneider
Electric

TITLE: Smart-UPS Online (SRT) w/ TRANSFORMER
SRT6KRMXLT-5KTF + SRT192RMBP - RACKMOUNT
INPUT: 208VAC, (L1+L2+G), HARDWARE
UPS OUTPUT: 208VAC, (1) HARDWARE, 3-WIRE (L1+L2+G),
(2) NEMA L6-20R, (1) NEMA L6-30R, (2) NEMA L6-30R
TRANSFORMER OUTPUT: 120VAC, (12) 5-20R
SYSTEM SINGLE-LINE DIAGRAM

PROJECT: STD SUBMITTAL DRAWING SHEET 4 OF 4

DWG NO: SRT6KRMXLT-5KTF
DRAWN BY: S CUNHA 16JUN2015
ENGINEER: C JAYARAMAN 16JUN2015
APPROVED BY: K WHITE/J PRECOPIO 16JUN2015

REV 0
PROJ ANGLE N/A