

THIS DRAWING IS UNPUBLISHED. RELEASED FOR PUBLICATION 20
 © COPYRIGHT 20 BY - ALL RIGHTS RESERVED.

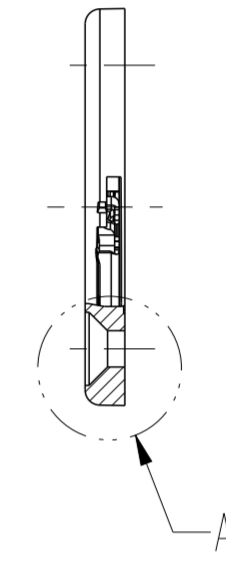
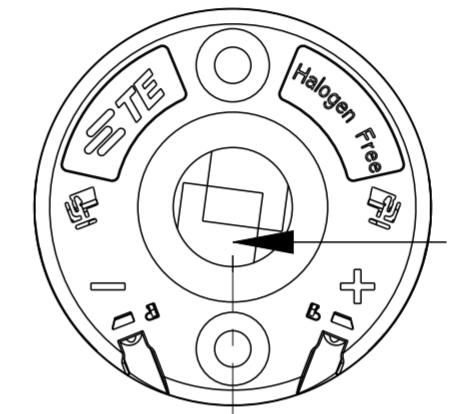
REVISIONS				
P	LTR	DESCRIPTION	DATE	APVD
B9		ECR-18-012126	22AUG2018	CD JL

NOTES:

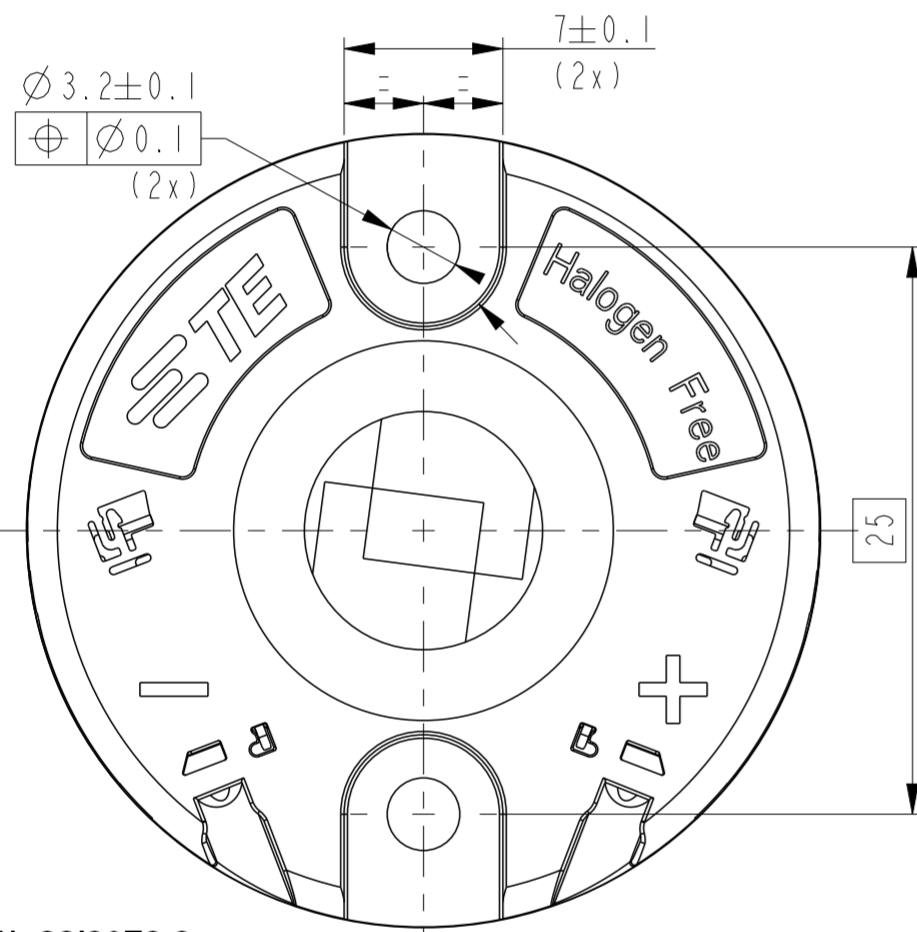
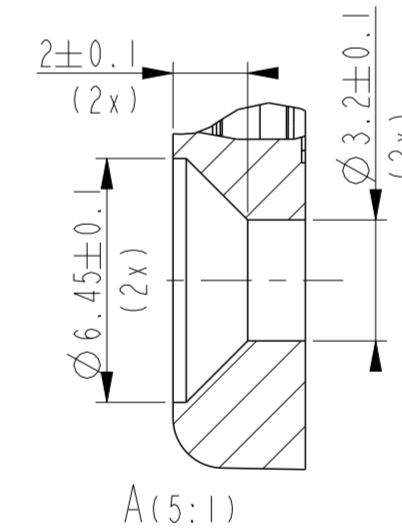
- MATERIALS:
 - HOLDER: PBT, COLOR: NATURAL,
 - CONTACTS: COPPER ALLOY, Ni/Au PLATING.
- FOR SOLID, FUSED AND STRANDED WIRE TYPES AWG 18 AND 20 ACC. UL 1007.
- WIRE STRIP LENGTH: 11-12 mm
- MAX. WIRE INSULATION OUTER DIAM.: $\varnothing 2.3\text{mm}$.
- RECOMMENDED SCREW TORQUE: 0.4 - 0.6 Nm.
- SCREWS TO BE USED:
 - PAN HEAD M3, #4-40 AND COUNTERSUNK M3 (2x), SEE TABLE SHEET 2.
- FOR LED THICKNESS RANGE 0.9-1.0 NOM.
- LED MATING ON 2 CORNERS WITH ADHESIVE TAPE.

SPECIAL PACKAGING IN 20 PIECES TRAY
 SPECIAL PACKAGING IN 20 PIECES TRAY AND BAGGED IN GROUPS OF 100 PIECES.

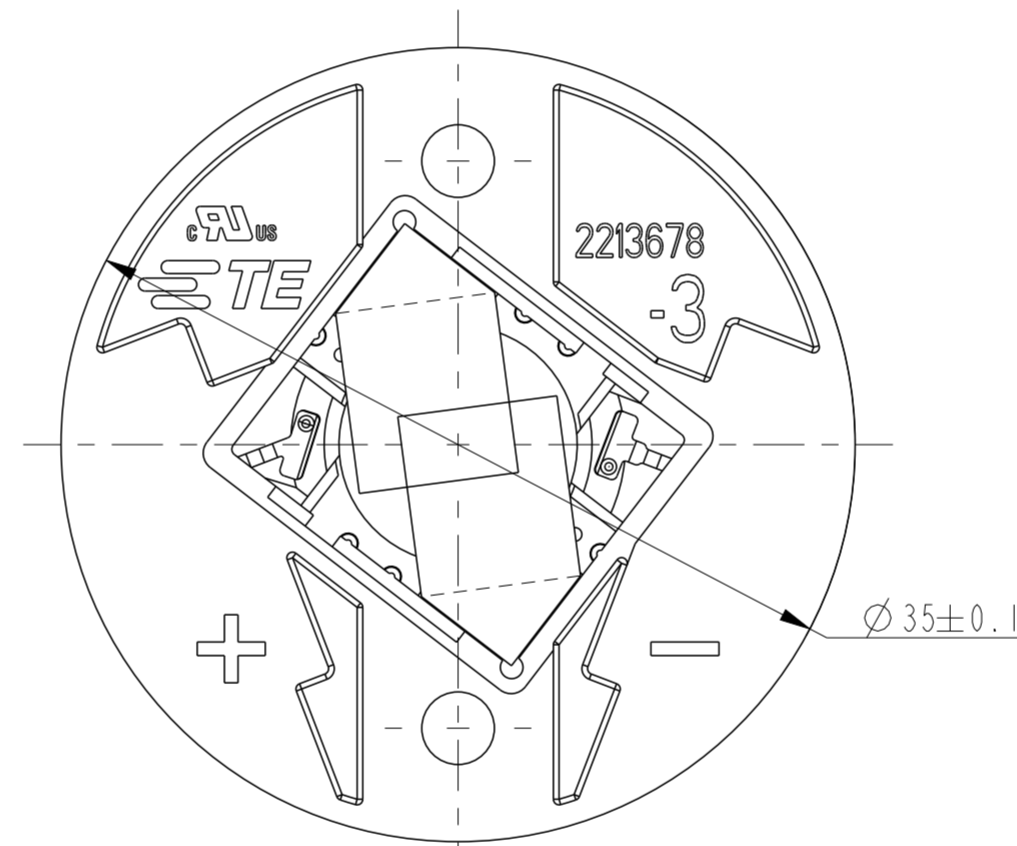
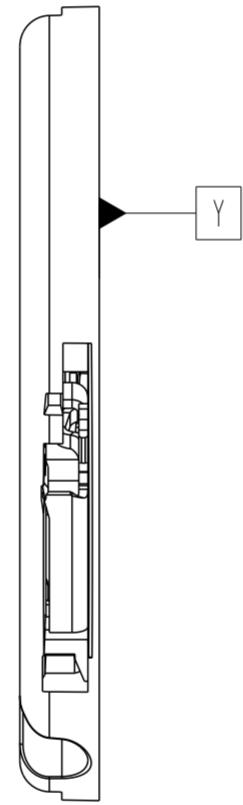
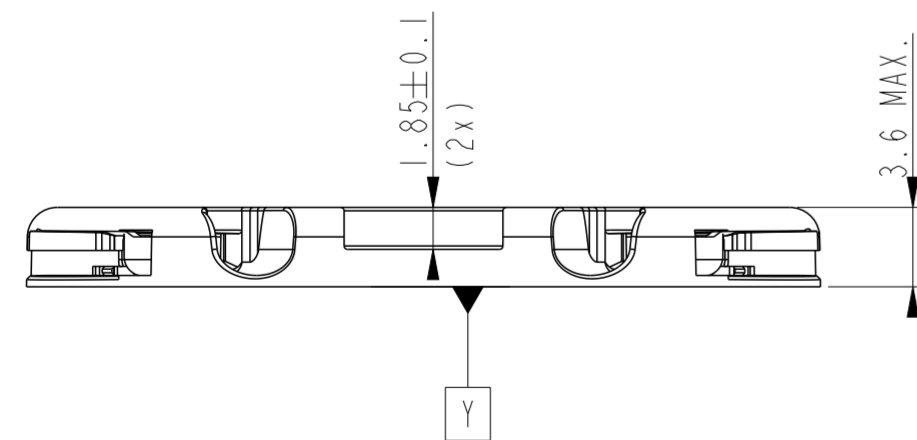
P/N 2213678-4 AS SHOWN



SECTION X-X



P/N 2213678-3 AS SHOWN



THIS DRAWING IS A CONTROLLED DOCUMENT.		DWN P. POORTER 22MAY2015	TE Connectivity	
DIMENSIONS: mm		CHK O. LEIJNSE 22MAY2015		
TOLERANCES UNLESS OTHERWISE SPECIFIED:		APVD O. LEIJNSE 22MAY2015	NAME MINI COB HOLDER PLATFORM	
0 PLC ±0.2		PRODUCT SPEC	SIZE	
1 PLC ±0.2		108-133062	CAGE CODE	
2 PLC ±0.1		114-133062	DRAWING NO	
3 PLC ±0.1		WEIGHT	RESTRICTED TO	
4 PLC ±0.1		CUSTOMER DRAWING	SCALE 3:1 SHEET 1 OF 3 REV B9	
ANGLES ±5				
FINISH				

THIS DRAWING IS UNPUBLISHED. RELEASED FOR PUBLICATION 20
 © COPYRIGHT 20 BY - ALL RIGHTS RESERVED.

REVISIONS					
P	LTR	DESCRIPTION	DATE	DWN	APVD
-	-	SEE SHEET 1	-	-	-

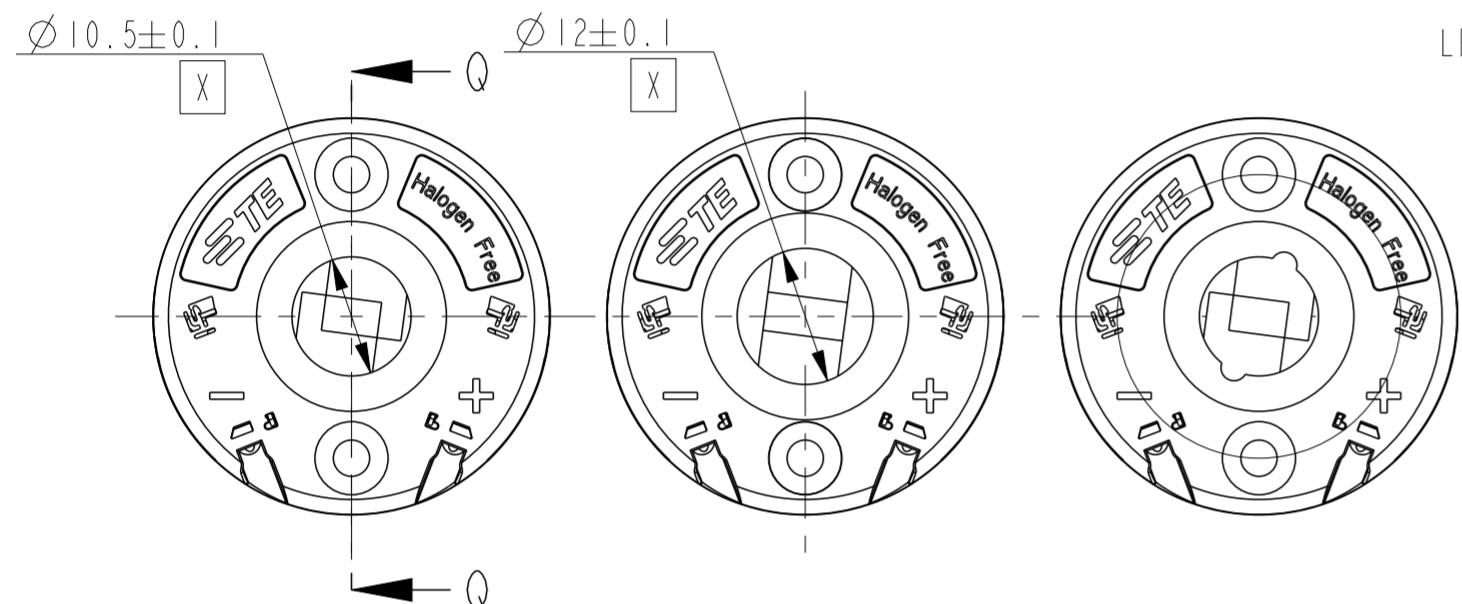
LED OUTLINE:

- P/N 2-2213678-3
- P/N 1-2213678-4 (NO TAPE)
- P/N 1-2213678-3 (NO TAPE)
- P/N 2213678-3
- P/N 2213678-4 (SHOWN)

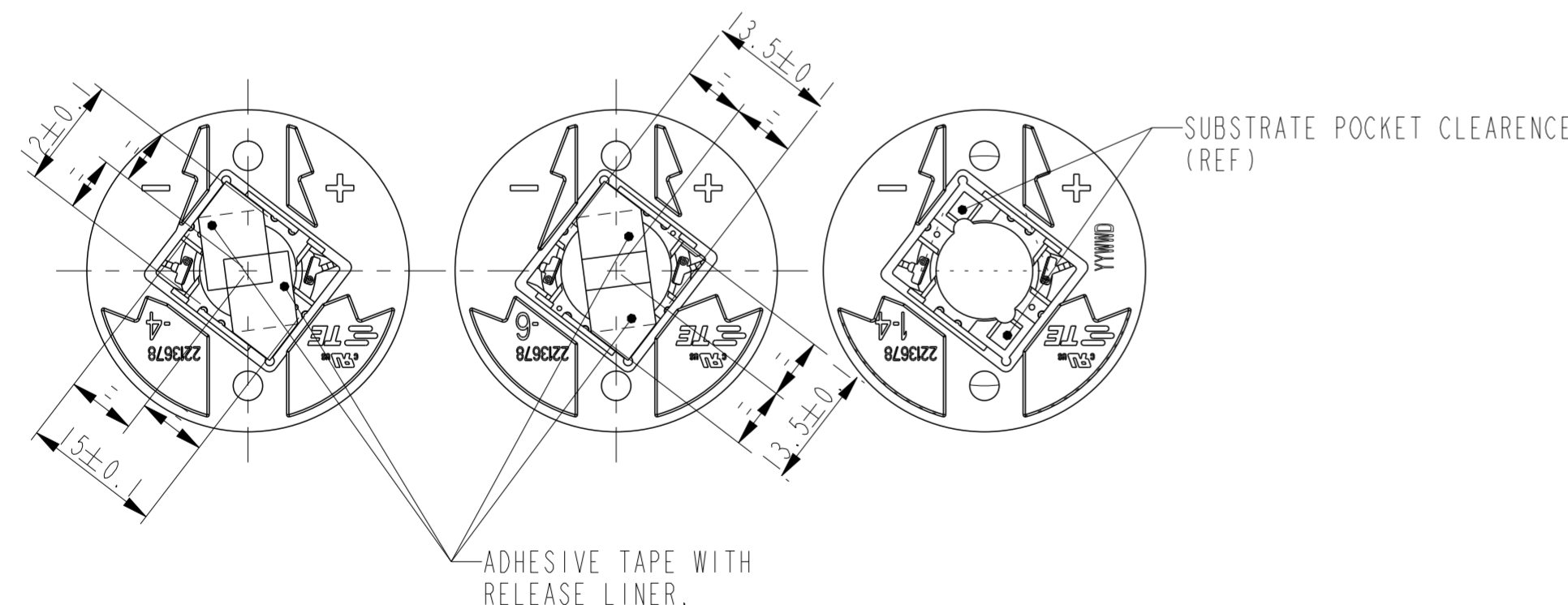
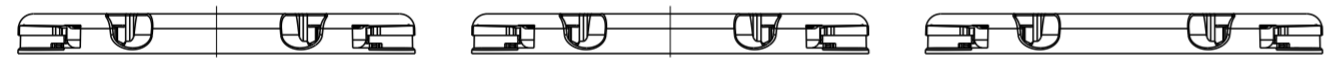
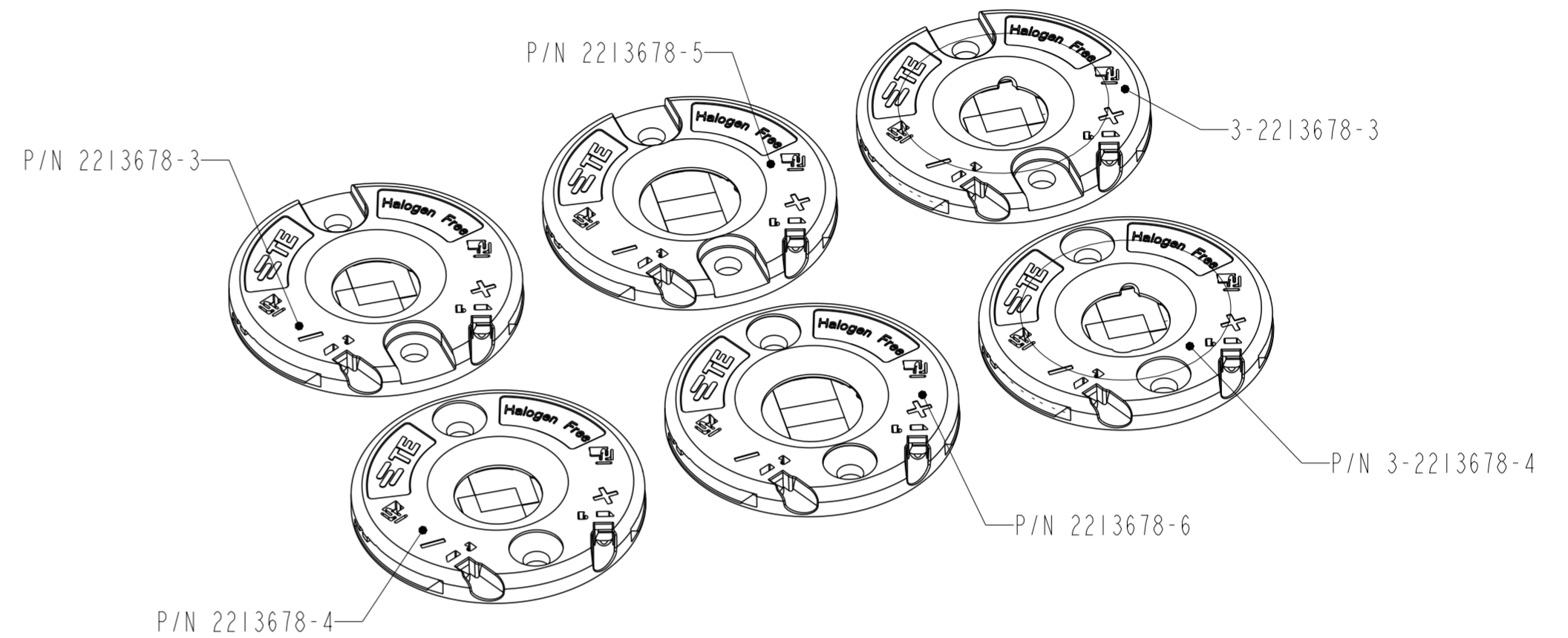
LED OUTLINE:

- P/N 1-2213678-6 (NO TAPE)
- P/N 1-2213678-5 (NO TAPE)
- P/N 2213678-5
- P/N 2-2213678-5
- P/N 2213678-6 (SHOWN)

- P/N 3-2213678-3 (NO TAPE)
- P/N 3-2213678-4 (NO TAPE)



(0.87)
 NOMINAL
 LED CAVITY HEIGHT
 INCLUDING TAPE.
 SECTION Q-Q



3-2213678-4	35mm LED Holder	12*15	COUNTERSUNK	YES	YES
3-2213678-3	35mm LED Holder	12*15	PAN HEAD	YES	YES
2-2213678-6	35mm LED Holder	13.5*13.5	PAN HEAD	YES	YES
2-2213678-5	35mm LED Holder	13.5*13.5	PAN HEAD	YES	YES
2-2213678-3	35mm LED Holder	12*15	PAN HEAD	YES	YES
1-2213678-6	35mm LED Holder	13.5*13.5	COUNTERSUNK	NO	YES
1-2213678-5	35mm LED Holder	13.5*13.5	PAN HEAD	NO	ON REQUEST
1-2213678-4	35mm LED Holder	12*15	COUNTERSUNK	NO	ON REQUEST
1-2213678-3	35mm LED Holder	12*15	PAN HEAD	NO	YES
2213678-6	35mm LED Holder	13.5*13.5	COUNTERSUNK	YES	YES
2213678-5	35mm LED Holder	13.5*13.5	PAN HEAD	YES	YES
2213678-4	35mm LED Holder	12*15	COUNTERSUNK	YES	YES
2213678-3	35mm LED Holder	12*15	PAN HEAD	YES	YES
PART NO	DESCRIPTION	LED OUTLINE	SCREW TYPE	TAPE	AVAILABLE

THIS DRAWING IS A CONTROLLED DOCUMENT.

DWN P. POORTER 22MAY2015
 CHK O. LEIJNSE 22MAY2015
 APVD O. LEIJNSE 22MAY2015

STE TE Connectivity

NAME: MINI COB HOLDER PLATFORM

PRODUCT SPEC: 108-133062
 APPLICATION SPEC: 114-133062

MATERIAL: -

WEIGHT: -

SIZE: A2 CAGE CODE: 00779 DRAWING NO: C-2213678 RESTRICTED TO: -

CUSTOMER DRAWING SCALE: 2:1 SHEET: 2 OF 3 REV: B9

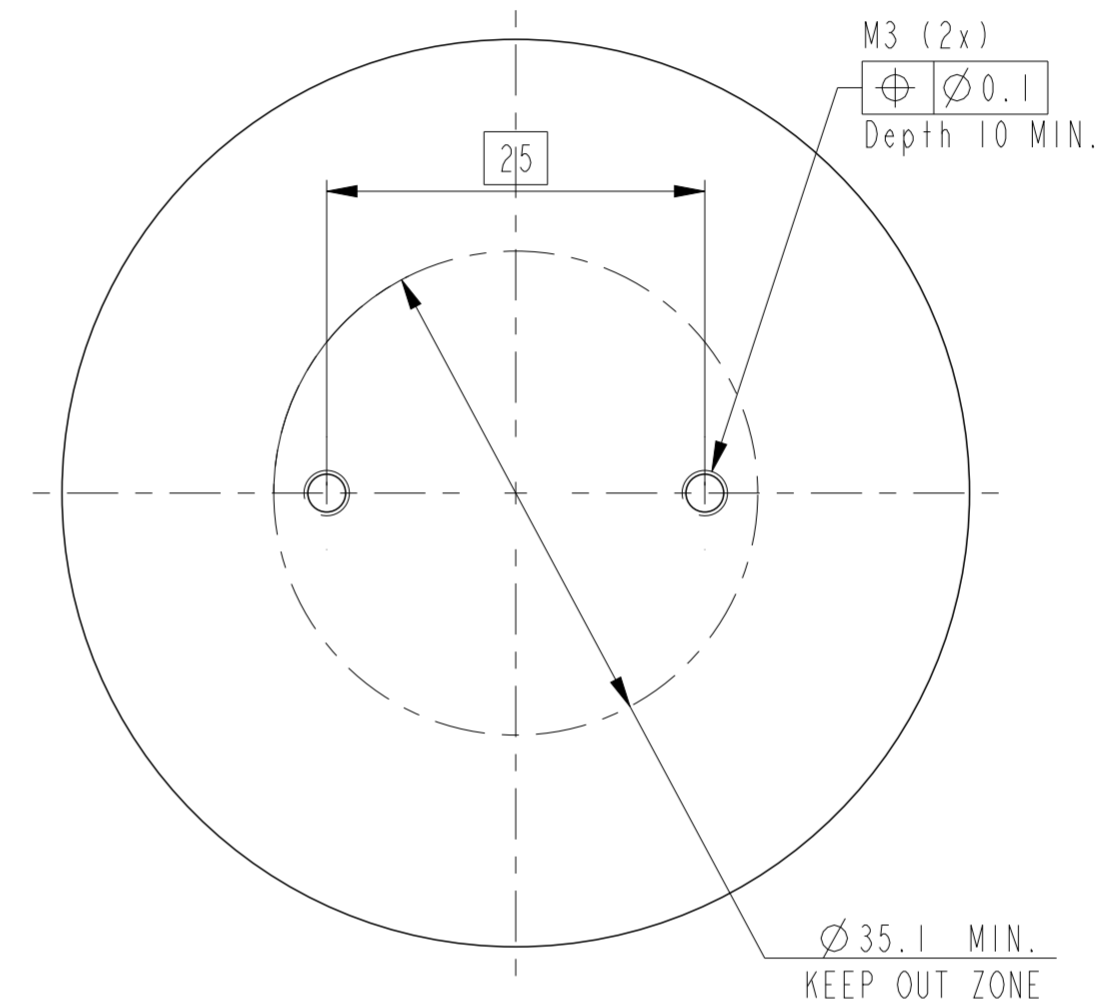
THIS DRAWING IS UNPUBLISHED. RELEASED FOR PUBLICATION 20
 © COPYRIGHT 20 BY - ALL RIGHTS RESERVED.

REVISIONS				
P	LTR	DESCRIPTION	DATE	APVD
-		SEE SHEET 1	-	-

RELEASED LED'S

BRAND	TYPE	DATA SHEET	REVISION	TE PART NUMBER
BRIDGELUX	DS150			3-2213678-3 & 3-2213678-4
BRIDGELUX	H6		BRIDGELUX H6 ARRAY PRODUCT DATA SHEET DS80 REV. B (2/2016)	2213678-5 & 2213678-6
BRIDGELUX	V10C GEN 7 ARRAY		DS100 REV. C (07/2016)	2213678-4 & 2213678-5
CITIZEN	CLU700			2213678-5 & 2213678-6
CITIZEN	CLL020			2213678-5 & 2213678-6
CITIZEN	CLL022			2213678-5 & 2213678-6
CITIZEN	CLU024			2213678-5 & 2213678-6
CITIZEN	CLU026			2213678-5 & 2213678-6
CITIZEN	CLU025			2213678-5 & 2213678-6
CITIZEN	CLU027			2213678-5 & 2213678-6
CITIZEN	CLU701			2213678-5 & 2213678-6
CREE	CMT 1420			2213678-5 & 2213678-6
EDISON OPTO	2PHM09X			2213678-5 & 2213678-6
EVERLIGHT	JU1215			2213678-3 & 2213678-4
LUMILEDS	LUXEON COB 105			2213678-3 & 2213678-4
LUMILEDS	LUXEON COB 107			2213678-3 & 2213678-4
LUMILEDS	LUXEON COB 109			2213678-3 & 2213678-4
LUMILEDS	LUXEON COB 1202s			2213678-3
LUMINUS	CLM-9 GEN 3		PDS-002816 REV 02	2213678-5 & 2213678-6
LUMINUS	CXM-9 GEN 3		PDS-002817 REV 03	2213678-5 & 2213678-6
LUMINUS	CHM6-XH		PDS-002620-REV 03	2213678-5 & 2213678-6
LUMINUS	CHM-9-AC00		PDS-002451 REV 03	2213678-5
NICHIA	S SERIES			2213678-3 & 2213678-4
PANASONIC	C14 135		20150730	2213678-5 & 2213678-6
SAMSUNG	LC010C		REV. 2.1 2016.6.20	2213678-3 & 2213678-4
SAMSUNG	LC020C		REV. 2.1 2016.6.20	2213678-3 & 2213678-4
SAMSUNG	LC003D			2213678-2
SAMSUNG	LC006D			2213678-2
SAMSUNG	LC009D			2213678-2
SAMSUNG	LC013D			2213678-2
SEOUL	SDW81FIDY_ZC4			2213678-5 & 2213678-6
SHARP	MINI ZENIGATA			2213678-3 & 2213678-4
TRIDONIC	SLE-G5-LES6			2213678-5 & 2213678-6
TRIDONIC	SLE-G5-LES11			2213678-5 & 2213678-6
TRIDONIC	SLE-G6-LES10		JUNE 22ND 2016	2213678-5 & 2213678-6
TRIDONIC	G6 LES 10 ADV		1-SEP-16	2213678-5 & 2213678-6

RECOMMENDED DRILLING HOLE PATTERN



THIS DRAWING IS A CONTROLLED DOCUMENT.		DWN P. POORTER 22MAY2015	TE Connectivity	
DIMENSIONS: mm		CHK O. LEIJNSE 22MAY2015		
TOLERANCES UNLESS OTHERWISE SPECIFIED: 0 PLC ±0.2 1 PLC ±0.2 2 PLC ±0.1 3 PLC ±0.1 4 PLC ±0.1 ANGLES ±5 FINISH		APVD O. LEIJNSE 22MAY2015	PRODUCT SPEC 108-133062	RESTRICTED TO
MATERIAL		APPLICATION SPEC 114-133062	SCALE A2 00779	DRAWING NO C-2213678
		WEIGHT	SCALE 1:1	SHEET 3 OF 3
		CUSTOMER DRAWING	REV B9	