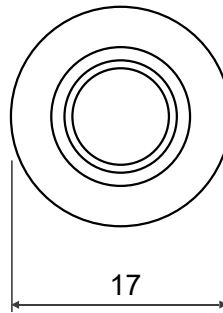
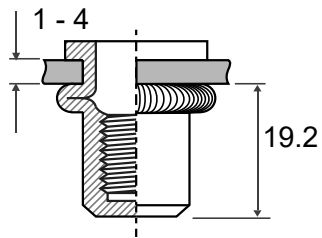
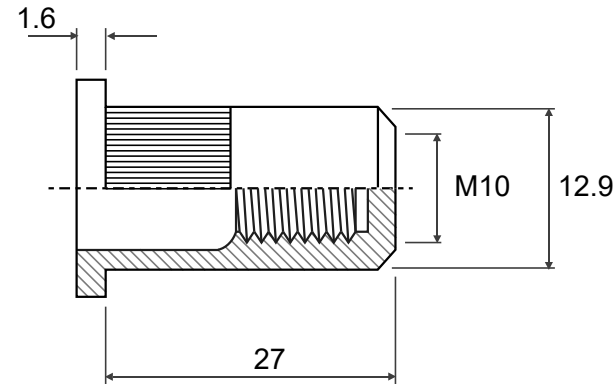


13 - 13.1



Approximate Performance in Laboratory Tests

Tensile Strength: 32000 N
Direct Torque: 50 Nm
Body Torque: 11 Nm
Shear Strength: 5000 N



| | | | | |
|--|----------|--|-------------------|--|
| | Material | | Customer Part No. | |
| | Finish | | Web Ref No | |