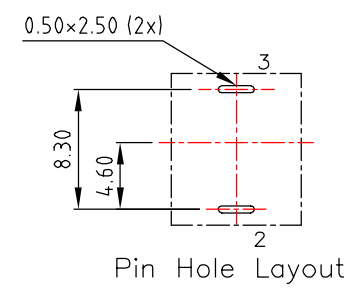
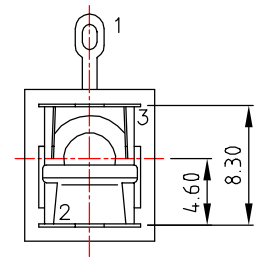
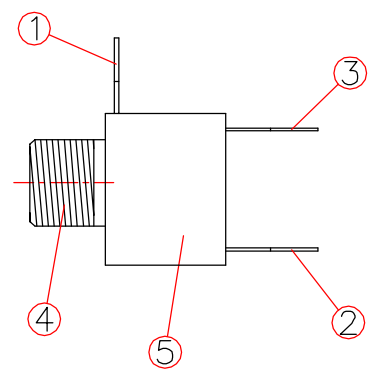
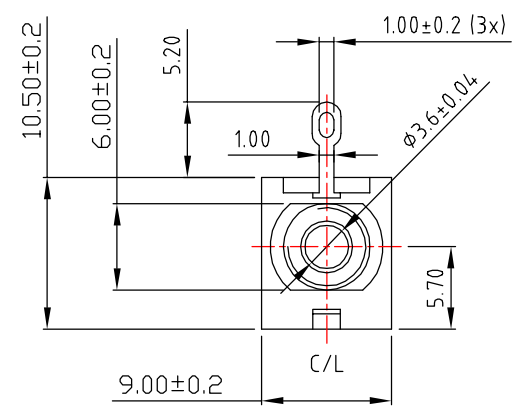
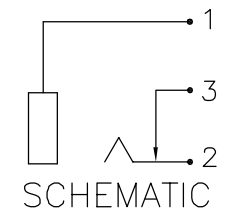
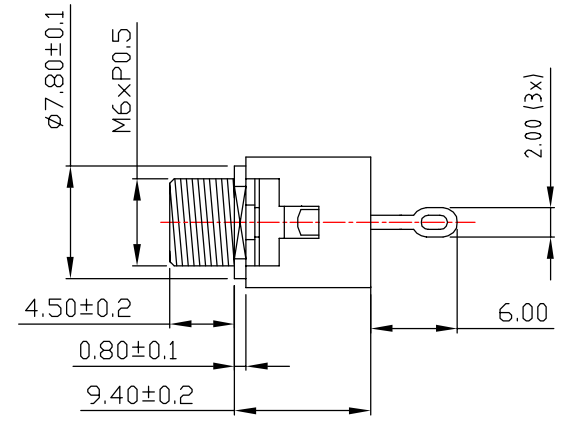
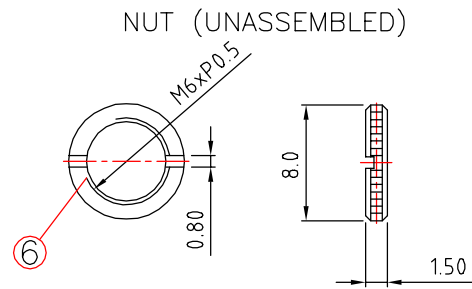


ISS.	AMEND	DATE
1		09/07/90
2	REDRAWN UPDATED	30/03/15



6.	M6 Nut	1.5T Brass	1	Nickel Plated
5.	Housing	POM	1	Ivory Color
4.	Barrel(W/Thread)	Brass	1	Nickel Plated
3.	Ring Spring	0.2T Phosphor Bronze	1	Silver Plated
2.	Tip Spring	0.2T Phosphor Bronze	1	Silver Plated
1.	Earth Terminal	0.3T Brass	1	Silver Plated
No.	Description	Material	Qty	Finish

### SPECIFICATIONS

Contact Resistance : 30mΩ max  
 Insulation Resistance : 100MΩ min. at DC 500V  
 Dielectric Withstanding Voltage : AC 500V for one minute

TOLERANCE : ±0.3mm UNLESS OTHERWISE SPECIFIED

**RoHS**  
  
**COMPLIANT**

**TOLERANCE**  
 NO DEC. PLACE ±  
 1 DEC. PLACE ±  
 2 DEC. PLACE ±  
 HOLE Ø ±  
 ANGLES ±  
 UNLESS OTHERWISE STATED

DO NOT SCALE

**Cliff Electronic Components Ltd.**  
 76 Holmesthorpe Avenue, Holmesthorpe Industrial Estate,  
 Redhill, Surrey, RH1 2PF, England, UK  
 Tel: 01737-771375 Fax: 01737-766012 Website: www.cliffuk.co.uk

DIMENSIONS IN MILLIMETERS UNLESS OTHERWISE STATED. WORK TO DIMENSIONS. REMOVE ALL BURRS. IF IN DOUBT ASK.

3rd ANGLE PROJECTION:

THE CONTENTS OF THIS DOCUMENT MUST NOT BE COPIED OR DISCLOSED TO A 3rd PARTY WITHOUT WRITTEN PERMISSION OF CLIFF UK. © 1990

MATERIAL:	SEE TABLE
FINISH:	SEE TABLE
DRAWN:	C.A.M.T.
APPROVED:	R.W.T.

TITLE:	Ø3.5mm MONO JACK SOCKET (JYO-35)
DRWG. No.	FC6812
FORM:	A4DRWGH