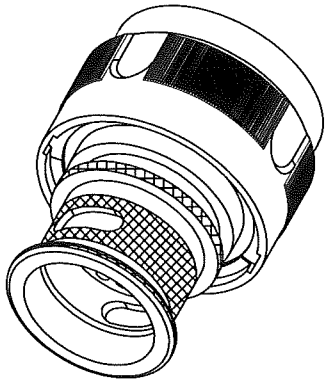
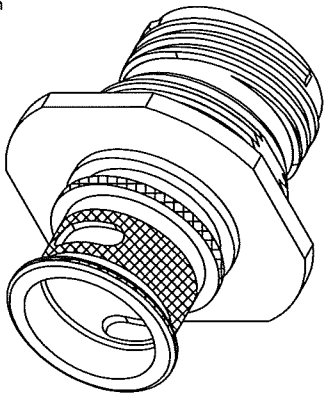


- NOTES: (CB CONFIGURATION ONLY)
1. SPRING BAND INCLUDED. (SEE TABLE V ON PAGE 5)
 2. SEE TABLES ON PAGE 5 FOR DIMENSIONS.
 3. CROSSHATCH KNURL OR RIDGES AT MFG OPTION.
 4. CONNECTORS SHALL CONFORM TO ALL INTERMEDIATE AND APPLICABLE PERFORMANCE REQUIREMENTS AS SET FORTH BY MIL-DTL-38999 & MIL-C-85049.
 5. DRAWING IS SUPPORTED BY ELECTRONIC SOLID MODEL, DRAWING IS NOT FULLY DIMENSIONED.

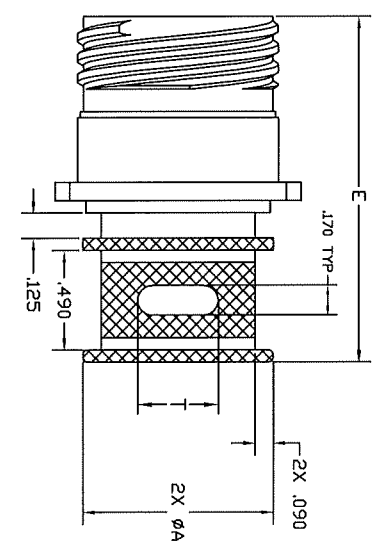
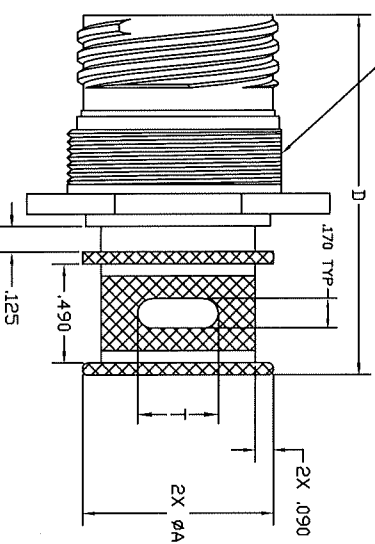
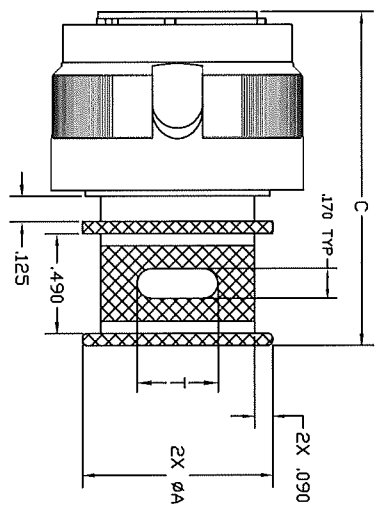
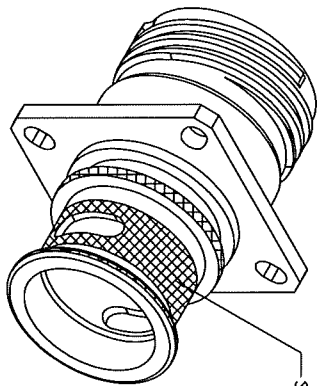
*D38999/26 STYLE
WITH INTEGRATED BANDING



*D38999/24 STYLE
WITH INTEGRATED BANDING



*D38999/20 STYLE
WITH INTEGRATED BANDING



JAM NUT & O-RING INCLUDED WITH CONNECTOR NOT SHOWN FOR CLARITY

SEE NOTE 3

*CONNECTOR VIEWS ARE FOR REFERENCE ONLY.

REVISION HISTORY

REV	DESCRIPTION	DATE	APPROVED
L	ADDED HARDWARE FINISHES K (PASSIVATED STAINLESS STEEL) AND S (ELECTRODEPOSITED NICKEL STAINLESS STEEL) TO TABLE I. CORRECTED F MAX TEMP FRDM (-200°C) TO (+200°C).	2/9/17	
M	ADDED SLOT OPTION TO PART NUMBER BREAK-DOWN. ADDED SLOT OPTION DETAILS TO DRAWING ON PAGE 1. ADDED SLOT OPTION DIMENSIONS IN TABLE III ON PAGE 5, UNDER COLUMN 'T'.	4/13/17	

P/LN BREAKOUT: EC IB D38999/26 E A 35 P B-BS-S

FILCONN INTEGRATED BANDING =IB
INTEGRATED SADDLE =IS
INTEGRATED COMBO =ICB
INTEGRATED QUICK TIE=IQT
CONNECTOR SERIES
SERVICE CLASS
Shell Size (Table J)
CONTACT ARRANGEMENT (Note 4)
CONTACT STYLE (Note 4)
ALTERNATE POLARIZATION POSITIONS (Note 4)
BOOT OPTION (Table IV) (OMIT IF NOT NEEDED)
SLOT OPTION (Table III) (OMIT IF NOT NEEDED)

DRAWN	D. DAVIS	DATE	06/28/11	UNLESS OTHERWISE SPECIFIED DIMENSIONS ARE IN INCHES TOLERANCES ARE:	TEMP	FILCONN	ARIZONA
CHECKED		DATE		DECIMALS	MIL-DTL-38999 INTEGRATED BANDING PLATFORM, SADDLE CLAMP, QUICK TIE CONNECTOR SERIES MASTER DRAWING		
QUALITY		DATE		.XXX ± .010 ± 1°	FSC#	3LSN9	SIZE
APPROVED		DATE		.X ± .030	DWG NUMBER	FCIBD38999	A
					SCALE	1	REV
					SHEET	1	M
					DATESET	FCIBD38999	1
					SHO.DWG		5

REVISION HISTORY			
REV	DESCRIPTION	DATE	APPROVED
L	ADDED HARDWARE FINISHES K PASSIVATED STAINLESS STEEL) AND S (ELECTRODEPOSITED NICKEL STAINLESS STEEL) TO TABLE I. CORRECTED F MAX TEMP FROM (-200°C) TO (+200°C).	2/9/17	
M	ADDED SLOT OPTION TO PART NUMBER BREAK-DOWN. ADDED SLOT OPTION DETAILS TO DRAWING ON PAGE 1. ADDED SLOT OPTION DIMENSIONS IN TABLE III ON PAGE 5, UNDER COLUMN "1".	4/13/17	

TABLE I SERVICE CLASS (HARDWARE FINISH)	
F	Electroless Nickel -85°F to +392°F(-65°C to +200°C)
W	Olive Drab Cadmium over Electroless Nickel plate, -85°F to +347°F(-65°C to +175°C)
NT	Nickel Teflon (Consult factory for details)
Z	Yellow Cadmium over Electroless Nickel Plate.
XM	Electroless Nickel over Composite (ULTEM 2300)
XW	Olive Drab Cadmium over Electroless Nickel over Composite (ULTEM 2300)
XNT	Nickel Teflon over Composite (ULTEM 2300)
K	Stainless Steel, Passivated -85°F to +392°F (-65°C to +260°C)
S	Stainless Steel, Electrodeposited Nickel -85°F to +392°F (-65°C to +260°C)

TABLE II									
A	B	C	D	E	F	G	H	J	
9	11	13	15	17	19	21	23	25	

TABLE V	
SHELL SIZE	SPRING BAND
9 (A)	FCSSB01
11 (B)	FCSSB01
13 (C)	FCSSB02
15 (D)	FCSSB02
17 (E)	FCSSB03
19 (F)	FCSSB03
21 (G)	FCSSB04
23 (H)	FCSSB04
25 (J)	FCSSB05

TABLE III																	
SHELL SIZE	A	B	C	D	E	F	G	H	J	K	L	M	N	P	R	S	T
9	0.594	0.494	1.640	1.790	1.690	2.770	2.770	2.770	2.770	2.770	2.770	2.060	2.210	2.110	0.310	0.155	0.170
11	0.722	0.622	1.640	1.790	1.690	2.770	2.770	2.770	2.770	2.770	2.770	2.060	2.210	2.110	0.375	0.219	0.170
13	0.836	0.736	1.640	1.790	1.690	2.770	2.770	2.770	2.770	2.770	2.770	2.060	2.210	2.110	0.375	0.219	0.250
15	0.961	0.861	1.640	1.790	1.690	2.770	2.770	2.770	2.770	2.770	2.770	2.060	2.210	2.110	0.375	0.219	0.250
17	1.086	0.986	1.640	1.790	1.690	2.770	2.770	2.770	2.770	2.770	2.770	2.060	2.210	2.110	0.437	0.281	0.500
19	1.192	1.092	1.640	1.790	1.690	2.770	2.770	2.770	2.770	2.770	2.770	2.060	2.210	2.110	0.437	0.281	0.500
21	1.317	1.217	1.640	1.790	1.690	2.770	2.770	2.770	2.770	2.770	2.770	2.060	2.210	2.110	0.531	0.375	0.500
23	1.444	1.344	1.640	1.837	1.690	2.770	2.770	2.770	2.770	2.770	2.770	2.060	2.257	2.110	0.531	0.375	0.500
25	1.567	1.467	1.640	1.837	1.690	2.770	2.770	2.770	2.770	2.770	2.770	2.060	2.257	2.110	0.625	0.469	0.500

TABLE IV (BOOT OPTION)	
BS	STRAIGHT BOOT
B45	45° BOOT
B90	90° BOOT

DRAWN	D. DAVIS	DATE	06/28/11	UNLESS OTHERWISE SPECIFIED DIMENSIONS ARE IN INCHES TOLERANCES ARE:	DECIMALS	ANGLES	SCALE:	FSCM:	DWG NUMBER:	SIZE	REV
CHECKED		DATE			.XXX ± .010	± 1°	NTS	3LSN9	FCIBD38999	A	M
QUALITY		DATE			.XX ± .020				FCIBD38999		
APPROVED		DATE			.X ± .030				FCIBD38999 SHOLDWG	S	S

TEMPE FILConn ARIZONA

MIL-DTL-38999 INTEGRATED
BANDING PLATFORM, SADDLE CLAMP, QUICK TIE
CONNECTOR SERIES MASTER DRAWING