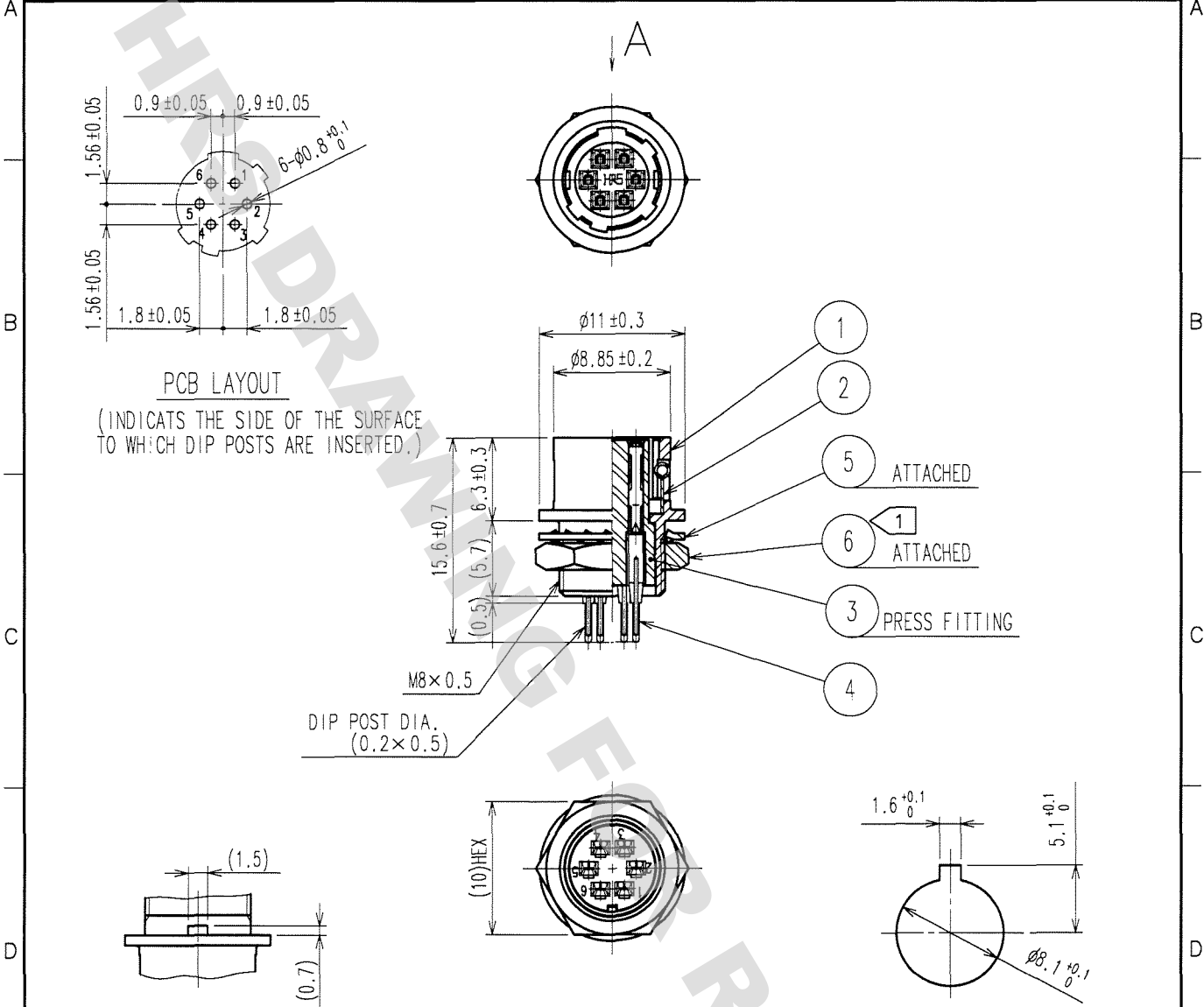


DRAWING FOR REFERENCE: This is subject to change without notice
08/11/2012

1		2		3		4			
COUNT	DESCRIPTION OF REVISIONS	BY	CHKD	DATE	COUNT	DESCRIPTION OF REVISIONS	BY	CHKD	DATE
△					△				
△					△				
△					△				



PCB LAYOUT
(INDICATES THE SIDE OF THE SURFACE TO WHICH DIP POSTS ARE INSERTED.)

- 1
- 2
- 5 ATTACHED
- 6 ATTACHED
- 3 PRESS FITTING
- 4

A DETAIL OF MOUNTING GUIDE

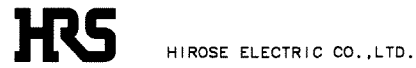
PANEL CUTOUT
t=0.7 TO 2

NOTE ① THE RECOMMENDED CLAMP TORQUE, REF. NO. ⑥ : 1.5N · m.
LOCTITE 242, HENKEL JAPAN OR EQUIVALENT IS RECOMMENDED TO PREVENT REF. NO. ⑥ FOR LOOSENING.

3	POLYBUTYLENE TEREPHTHALATE (BLACK)	UL94V-0	6	BRASS	NICKEL PLATING
2	STAINLESS STEEL		5	PHOSPHOR BRONZE	NICKEL PLATING
1	ZINC ALLOY	MATTE FINISH NICKLE PLATED	4	PHOSPHOR BRONZE	SILVER PLATING 2μ m min.
NO.	MATERIAL	FINISH, REMARKS	NO.	MATERIAL	FINISH, REMARKS

CODE NO. (OLD)	DRAWN	DESIGNED	CHECKED	APPROVED	RELEASED
CL	<i>M. Sato</i>	<i>T. Horii</i>	<i>E. Kunii</i>	<i>M. Sato</i>	
	07.07.06	07.03.06	07.03.08	07.03.08	

DRAWING NO.	PART NO.
EDC4-022529-73	HR10A-7R-6SB(73)
UNITS	CODE NO.
mm	CL110-0316-0-73



TO
R