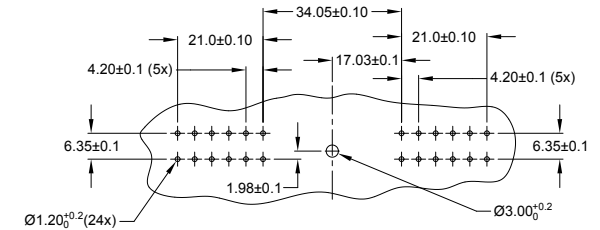
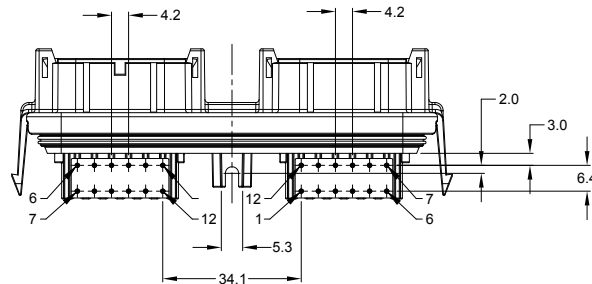
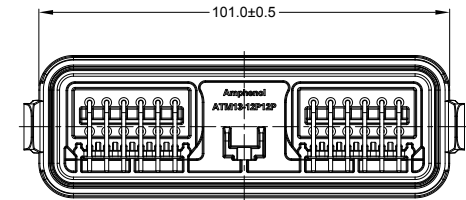
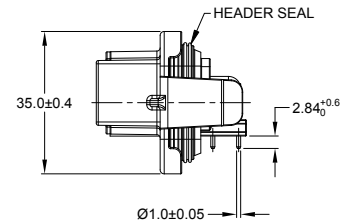
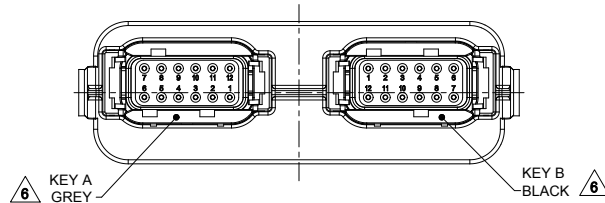
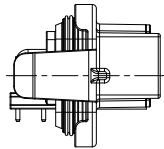
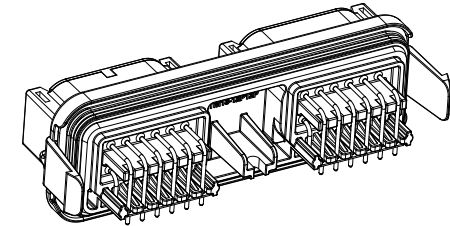
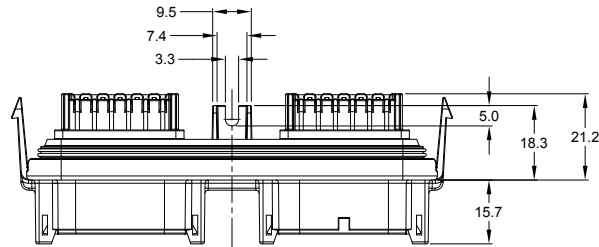


REVISIONS					
REV	ECO	DESCRIPTION	DATE	BY	APPR
A1	-	RELEASE NEW DRAWING	06NOV18	SULLEN	TOMMY



NOTES: UNLESS OTHERWISE SPECIFIED

- MATERIAL:
HOUSING: THERMOPLASTIC, BLACK
SEAL: SILICONE RUBBER
CONTACT: COPPER ALLOY
- MODIFICATIONS: RA PCB MOUNT
- SPECIFICATIONS:
3.1 CURRENT RATING: 7.5 AMPS
3.2 OPERATING TEMPERATURE: -55°C TO +125°C
3.3 DIELECTRIC WITHSTANDING VOLTAGE: LESS THAN 2 MILLIAMPS CURRENT LEAKAGE @ 1500 VOLTS AC
3.4 INSULATION RESISTANCE: 1000 MEGOHMS MIN @ 25°C
3.5 MOISTURE RESISTANCE: IP67 (MATED CONDITION)
3.6 MATING CYCLE DURABILITY: 100 CYCLES
3.7 RoHS COMPLIANT
- MATING PART: ATM06-12SX-*
(X = A,B,C,D KEYS ; * = ALL MODIFICATIONS)
- THIS RECEPTACLE IS USED WITH AIPXE-325X4* ENCLOSURE
(* = ALL MODIFICATIONS)

SEE SHEET 2 AND 3 FOR OTHER KEY ARRANGEMENTS AND COLORS

7. ALL DIMENSIONS ARE FOR REFERENCE USE ONLY

ATM13-12PX-12PX-BMXX		DESCRIPTION		ITEM
QUANTITY	PART NUMBER	MATERIALS LIST		
UNLESS OTHERWISE SPECIFIED				
1) All dimensions are in metric(mm).				
2) Tolerances are as follows:				
1 PL DEC ±0.30				
2 PL DEC ±0.15				
3 PL DEC ±0.08				
3) Note reference =				
SIGNATURES		DATE		
DRAWN: SULLENZHUANG		06NOV18		
CHECKED: ORIONLI		06NOV18		
ENGINEER:				
APPROVAL: TOMMYXIE		06NOV18		
CUSTOMER:				
PROCESS SPECIFICATIONS:		THIS DRAWING IS SUPPLIED FOR INFORMATION ONLY. DESIGN FEATURES, SPECIFICATIONS AND PERFORMANCE DATA SHOWN HEREON ARE THE PROPERTY OF THE AMPHENOL CORPORATION. NO RIGHTS OF REPRODUCTION ARE IMPLIED. ALL DIMENSIONS ARE SUBJECT TO NORMAL MANUFACTURING VARIATIONS.		
NEXT ASSY:				
SIZE	TYPE	DWG NO.	REVISION	
B	C-	ATM13-12PX-12PX-BMXX	A1	
SCALE	NONE	SHEET 1 OF 3		

TITLE: RECEPTACLE ATM HEADER, 2 X 12 POSITIONS, SIZE 20 CONTACT

DWG NO:

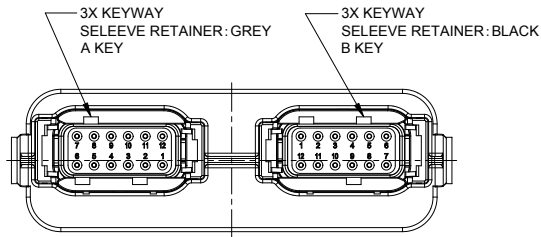
ATM13-12PX-12PX-BMXX

REV: A1

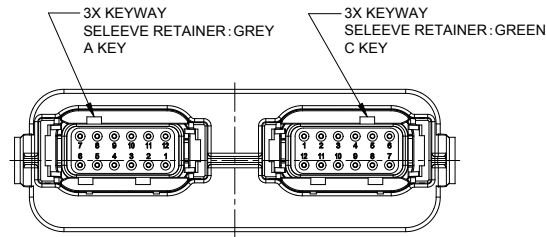
SH: 1

OF: 3

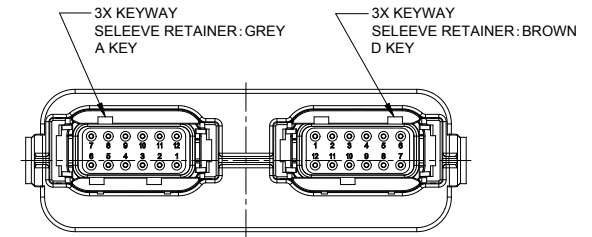
REVISIONS					
REV	ECO	DESCRIPTION	DATE	BY	APPR
A1	-	RELEASE NEW DRAWING	06NOV18	SULLEN	TOMMY



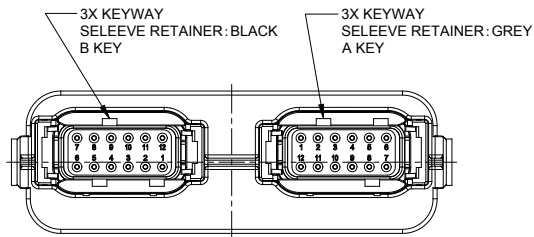
ATM13-12PA-12PB-BMXX
KEY AB



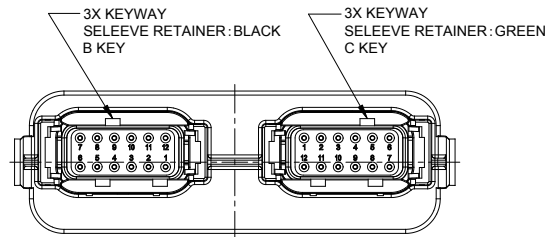
ATM13-12PA-12PC-BMXX
KEY AC



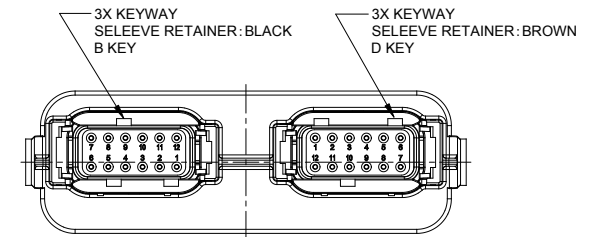
ATM13-12PA-12PD-BMXX
KEY AD



ATM13-12PB-12PA-BMXX
KEY BA



ATM13-12PB-12PC-BMXX
KEY BC



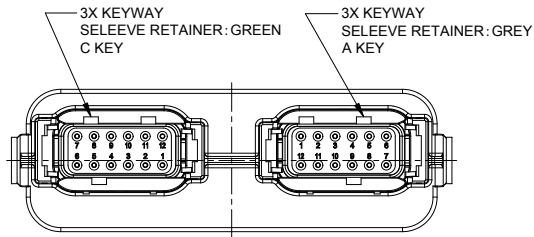
ATM13-12PB-12PD-BMXX
KEY BD

ATM13-12PX-12PX-BMXX VARIANTS		
CONTACT PLATING	POTTING OR NOT IN RESERVOIR	PART NUMBER
GOLD	NO POTTING	ATM13-12PX-12PX-BM01
TIN	NO POTTING	ATM13-12PX-12PX-BM03

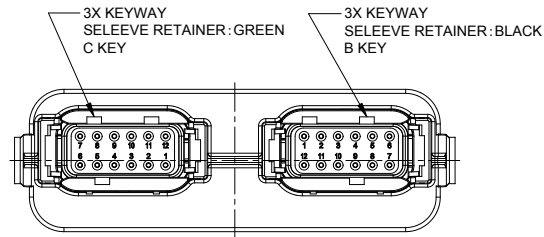
ATM13-12PX-12PX-BMXX		DESCRIPTION		ITEM
QUANTITY	PART NUMBER	MATERIALS LIST		
UNLESS OTHERWISE SPECIFIED 1) All dimensions are in metric(mm). 2) Tolerances are as follows: 1 PL DEC ±0.30 2 PL DEC ±0.15 3 PL DEC ±0.08 Fractions ±1/64 Angles ±1° 3) Note reference =				
SIGNATURES DATE DRAWN: SULENZHANG 06NOV18 CHECKED: ORONLI 06NOV18 ENGINEER: APPROVAL: TOMMYXIE 06NOV18		 Sine Systems - www.amphenol-sine.com 44724 Morley Drive Clinton Township, MI 48036 RECEPTACLE ATM HEADER, 2 x 12 POSITIONS, SIZE 20 CONTACT		
MATERIAL SPECIFICATIONS: CUSTOMER: THIS DRAWING IS SUPPLIED FOR INFORMATION ONLY. DESIGN FEATURES, SPECIFICATIONS AND PERFORMANCE DATA SHOWN HEREON ARE THE PROPERTY OF THE AMPHENOL CORPORATION. NO RIGHTS OF REPRODUCTION ARE IMPLIED. ALL DIMENSIONS ARE SUBJECT TO NORMAL MANUFACTURING VARIATIONS.				
PROCESS SPECIFICATIONS: NEXT ASSY:		SIZE B C- TYPE ATM13-12PX-12PX-BMXX DWG NO. A1 REVISION A1	SCALE NONE SHEET 2 OF 3	

TITLE: RECEPTACLE ATM HEADER, 2 X 12 POSITIONS, SIZE 20 CONTACT
 DWG NO.: ATM13-12PX-12PX-BMXX
 REV: A1
 SH: 2
 OF: 3

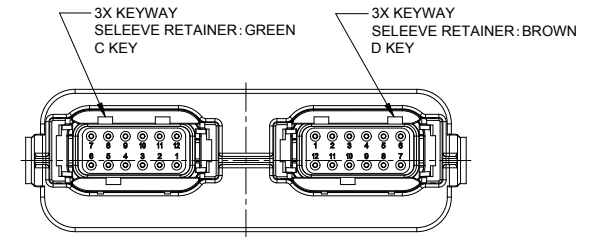
REVISIONS					
REV	ECO	DESCRIPTION	DATE	BY	APPR
A1	-	RELEASE NEW DRAWING	06NOV18	SULLEN	TOMMY



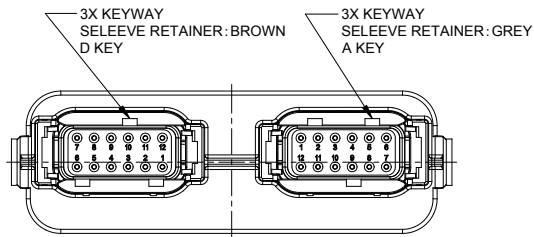
ATM13-12PC-12PA-BMXX
KEY CA



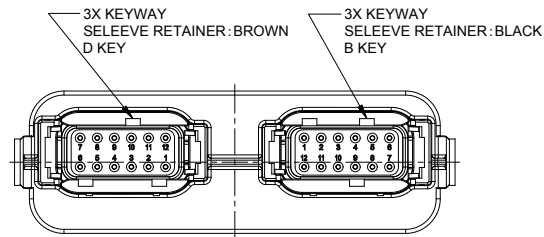
ATM13-12PC-12PB-BMXX
KEY CB



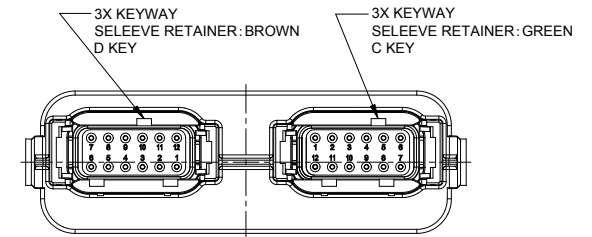
ATM13-12PC-12PD-BMXX
KEY CD



ATM13-12PD-12PA-BMXX
KEY DA



ATM13-12PD-12PB-BMXX
KEY DB



ATM13-12PD-12PC-BMXX
KEY DC

ATM13-12PX-12PX-BMXX VARIANTS		
CONTACT PLATING	POTTING OR NOT IN RESERVOIR	PART NUMBER
GOLD	NO POTTING	ATM13-12PX-12PX-BM01
TIN	NO POTTING	ATM13-12PX-12PX-BM03

ATM13-12PX-12PX-BMXX		DESCRIPTION		ITEM
QUANTITY	PART NUMBER	MATERIALS LIST		
UNLESS OTHERWISE SPECIFIED 1) All dimensions are in metric (mm). 2) Tolerances are as follows: 1 PL DEC ±0.30 2 PL DEC ±0.15 3 PL DEC ±0.08 Fractions ±1/64 Angles ±1°				
SIGNATURES DATE DRAWN: SULENZHANG 06NOV18 CHECKED: ORONLI 06NOV18 ENGINEER: APPROVAL: TOMMYXIE 06NOV18		Amphenol Sine Systems - www.amphenol-sine.com 44724 Morley Drive Clinton Township, MI 48036		
MATERIAL SPECIFICATIONS: CUSTOMER:				
PROCESS SPECIFICATIONS: THIS DRAWING IS SUPPLIED FOR INFORMATION ONLY. DESIGN FEATURES, SPECIFICATIONS AND PERFORMANCE DATA SHOWN HEREON ARE THE PROPERTY OF THE AMPHENOL CORPORATION. NO RIGHTS OF REPRODUCTION ARE IMPLIED. ALL DIMENSIONS ARE SUBJECT TO NORMAL MANUFACTURING VARIATIONS.		RECEPTACLE ATM HEADER, 2 x 12 POSITIONS, SIZE 20 CONTACT		
NEXT ASSY:		SIZE: B C- SCALE: NONE	DWG NO: ATM13-12PX-12PX-BMXX REVISION: A1	SHEET 3 OF 3

TITLE: RECEPTACLE ATM HEADER, 2 X 12 POSITIONS, SIZE 20 CONTACT
 DWG NO: ATM13-12PX-12PX-BMXX
 REV: A1
 SH: 3
 OF: 3