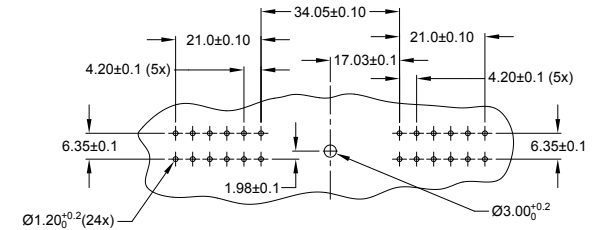
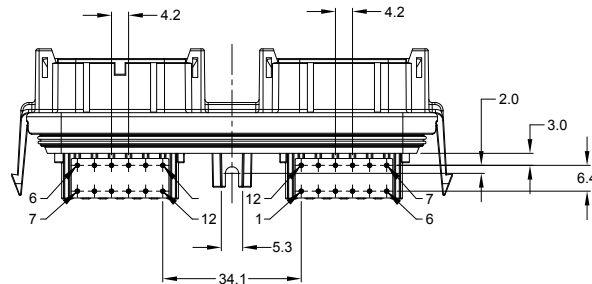
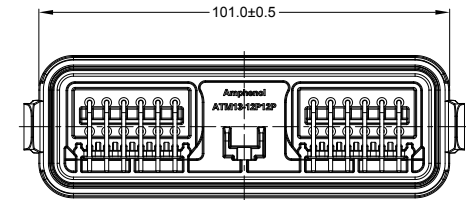
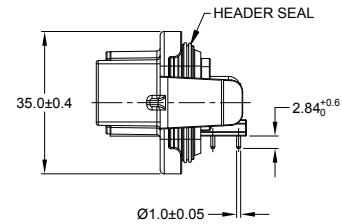
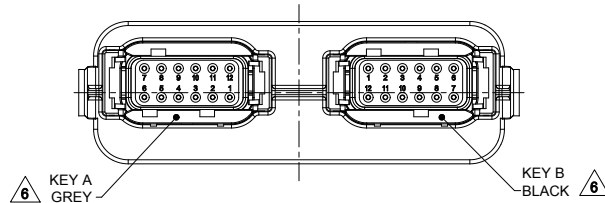
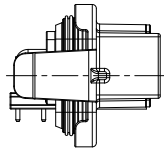
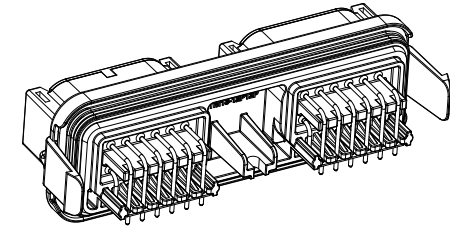
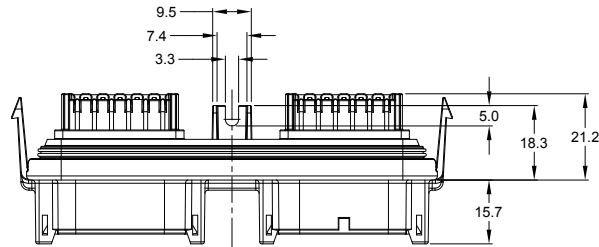


REVISIONS					
REV	ECO	DESCRIPTION	DATE	BY	APPR
A1	-	RELEASE NEW DRAWING	06NOV18	SULLEN	TOMMY



NOTES: UNLESS OTHERWISE SPECIFIED

- MATERIAL:  
HOUSING: THERMOPLASTIC, BLACK  
SEAL: SILICONE RUBBER  
CONTACT: COPPER ALLOY
- MODIFICATIONS: RA PCB MOUNT
- SPECIFICATIONS:  
3.1 CURRENT RATING: 7.5 AMPS  
3.2 OPERATING TEMPERATURE: -55°C TO +125°C  
3.3 DIELECTRIC WITHSTANDING VOLTAGE: LESS THAN 2 MILLIAMPS CURRENT LEAKAGE @ 1500 VOLTS AC  
3.4 INSULATION RESISTANCE: 1000 MEGOHMS MIN @ 25°C  
3.5 MOISTURE RESISTANCE: IP67 ( MATED CONDITION )  
3.6 MATING CYCLE DURABILITY: 100 CYCLES  
3.7 RoHS COMPLIANT
- MATING PART: ATM06-12SX-\*  
( X = A,B,C,D KEYS ; \* = ALL MODIFICATIONS)
- THIS RECEPTACLE IS USED WITH AIPXE-325X4\* ENCLOSURE  
( \* = ALL MODIFICATIONS)

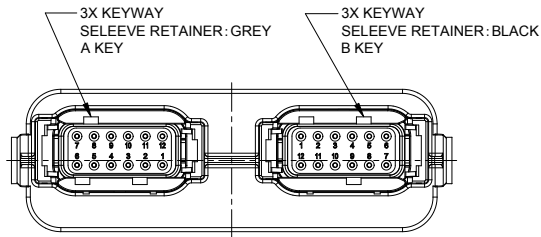
SEE SHEET 2 AND 3 FOR OTHER KEY ARRANGEMENTS AND COLORS

7. ALL DIMENSIONS ARE FOR REFERENCE USE ONLY

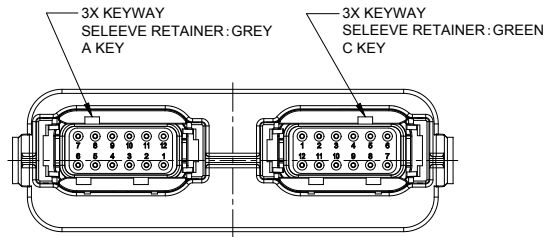
ATM13-12PX-12PX-BMXX		DESCRIPTION		ITEM
QUANTITY	PART NUMBER	MATERIALS LIST		
UNLESS OTHERWISE SPECIFIED				
1) All dimensions are in metric(mm).				
2) Tolerances are as follows:				
1 PL DEC ±0.30 Fractions ±1/64				
2 PL DEC ±0.15 Angles ±1°				
3 PL DEC ±0.08				
3) Note reference =				
MATERIAL SPECIFICATIONS:		SIGNATURES	DATE	 Sine Systems - www.amphenol-sine.com 44724 Morley Drive Clinton Township, MI 48036 <b>RECEPTACLE ATM HEADER,            2 x 12 POSITIONS, SIZE 20 CONTACT</b>
PROCESS SPECIFICATIONS:		DRAWN: SULENZHANG	06NOV18	
NEXT ASSY:		CHECKED: ORIONLI	06NOV18	
		ENGINEER:		
		APPROVAL: TOMMYXIE	06NOV18	SIZE TYPE DWG NO. REVISION <b>B C- ATM13-12PX-12PX-BMXX A1</b>
		CUSTOMER:		SCALE NONE SHEET 1 OF 3
THIS DRAWING IS SUPPLIED FOR INFORMATION ONLY. DESIGN FEATURES, SPECIFICATIONS AND PERFORMANCE DATA SHOWN HEREON ARE THE PROPERTY OF THE AMPHENOL CORPORATION. NO RIGHTS OF REPRODUCTION ARE IMPLIED. ALL DIMENSIONS ARE SUBJECT TO NORMAL MANUFACTURING VARIATIONS.				

TITLE: RECEPTACLE ATM HEADER, 2 X 12 POSITIONS, SIZE 20 CONTACT  
 DWG NO.: ATM13-12PX-12PX-BMXX  
 REV: A1  
 SH: 1  
 OF: 3

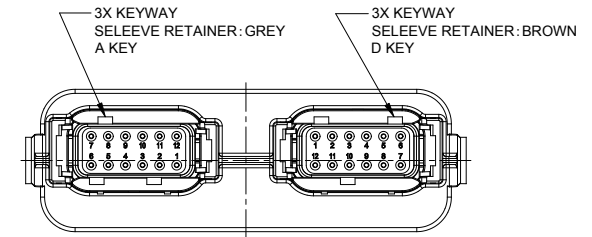
REVISIONS					
REV	ECO	DESCRIPTION	DATE	BY	APPR
A1	-	RELEASE NEW DRAWING	06NOV18	SULLEN	TOMMY



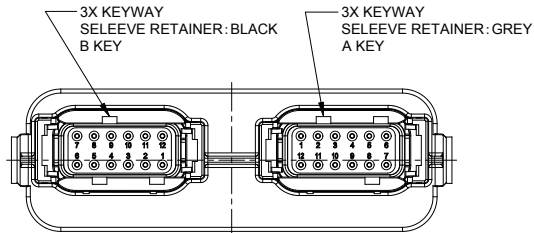
**ATM13-12PA-12PB-BMXX**  
**KEY AB**



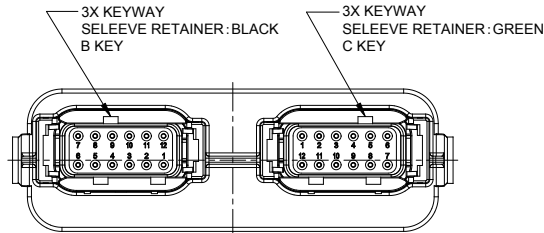
**ATM13-12PA-12PC-BMXX**  
**KEY AC**



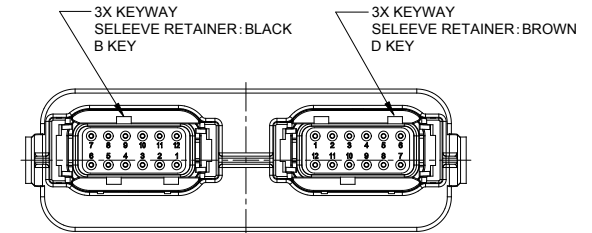
**ATM13-12PA-12PD-BMXX**  
**KEY AD**



**ATM13-12PB-12PA-BMXX**  
**KEY BA**



**ATM13-12PB-12PC-BMXX**  
**KEY BC**



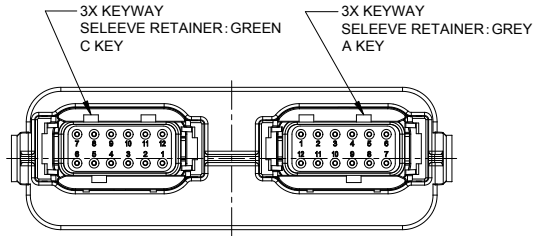
**ATM13-12PB-12PD-BMXX**  
**KEY BD**

ATM13-12PX-12PX-BMXX VARIANTS		
CONTACT PLATING	POTTING OR NOT IN RESERVOIR	PART NUMBER
GOLD	NO POTTING	ATM13-12PX-12PX-BM01
TIN	NO POTTING	ATM13-12PX-12PX-BM03

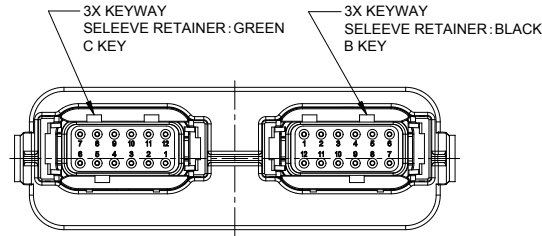
ATM13-12PX-12PX-BMXX		DESCRIPTION		ITEM
QUANTITY	PART NUMBER	MATERIALS LIST		
<b>UNLESS OTHERWISE SPECIFIED</b> 1) All dimensions are in metric(mm). 2) Tolerances are as follows: 1 PL DEC ±0.30 Fractions ±1/64 2 PL DEC ±0.15 Angles ±1° 3 PL DEC ±0.08 3) Note reference =				
SIGNATURES      DATE DRAWN: <b>SULLENZHANG</b> 06NOV18 CHECKED: <b>ORONLI</b> 06NOV18 ENGINEER: APPROVAL: <b>TOMMYXIE</b> 06NOV18		<b>Amphenol</b> Sine Systems - www.amphenol-sine.com 44724 Morley Drive Clinton Township, MI 48036		
MATERIAL SPECIFICATIONS: CUSTOMER:				
PROCESS SPECIFICATIONS: THIS DRAWING IS SUPPLIED FOR INFORMATION ONLY. DESIGN FEATURES, SPECIFICATIONS AND PERFORMANCE DATA SHOWN HEREON ARE THE PROPERTY OF THE AMPHENOL CORPORATION. NO RIGHTS OF REPRODUCTION ARE IMPLIED. ALL DIMENSIONS ARE SUBJECT TO NORMAL MANUFACTURING VARIATIONS.		RECEPTACLE ATM HEADER, 2 x 12 POSITIONS, SIZE 20 CONTACT SIZE TYPE DWG NO. REVISION <b>B C- ATM13-12PX-12PX-BMXX A1</b>		
NEXT ASSY:		SCALE: NONE	SHEET 2 OF 3	

TITLE: RECEPTACLE ATM HEADER, 2 X 12 POSITIONS, SIZE 20 CONTACT  
 DWG NO.: ATM13-12PX-12PX-BMXX  
 REV: A1  
 SH: 2  
 OF: 3

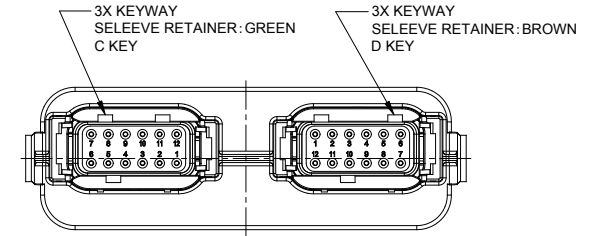
REVISIONS					
REV	ECO	DESCRIPTION	DATE	BY	APPR
A1	-	RELEASE NEW DRAWING	06NOV18	SULLEN	TOMMY



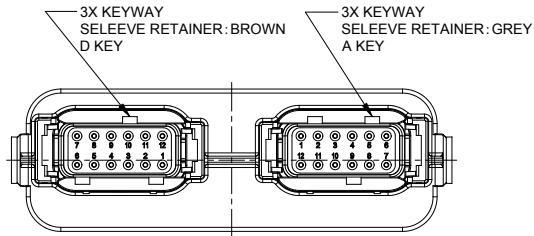
**ATM13-12PC-12PA-BMXX**  
KEY CA



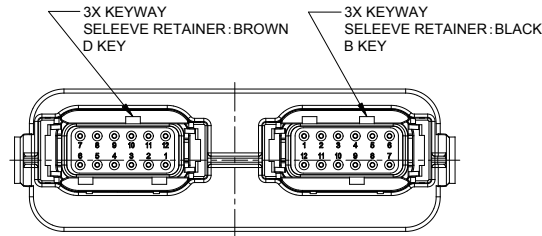
**ATM13-12PC-12PB-BMXX**  
KEY CB



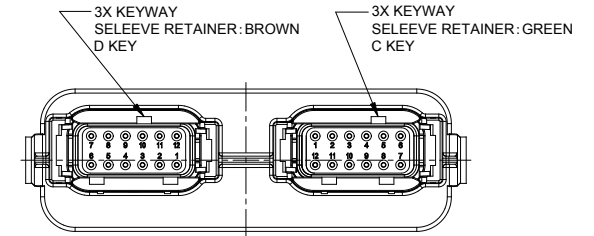
**ATM13-12PC-12PD-BMXX**  
KEY CD



**ATM13-12PD-12PA-BMXX**  
KEY DA



**ATM13-12PD-12PB-BMXX**  
KEY DB



**ATM13-12PD-12PC-BMXX**  
KEY DC

ATM13-12PX-12PX-BMXX VARIANTS		
CONTACT PLATING	POTTING OR NOT IN RESERVOIR	PART NUMBER
GOLD	NO POTTING	ATM13-12PX-12PX-BM01
TIN	NO POTTING	ATM13-12PX-12PX-BM03

ATM13-12PX-12PX-BMXX		DESCRIPTION		ITEM
QUANTITY	PART NUMBER	MATERIALS LIST		
<b>UNLESS OTHERWISE SPECIFIED</b> 1) All dimensions are in metric(mm). 2) Tolerances are as follows: 1 PL DEC ±0.30 2 PL DEC ±0.15 3 PL DEC ±0.08 Fractions ±1/64 Angles ±1°				
SIGNATURES DRAWN: SULENZHANG CHECKED: ORIONLI ENGINEER: APPROVAL: TOMMYXIE DATE: 06NOV18		<b>Amphenol</b> Sine Systems - www.amphenol-sine.com 44724 Morley Drive Clinton Township, MI 48036		
MATERIAL SPECIFICATIONS: CUSTOMER:		RECEPTACLE ATM HEADER, 2 x 12 POSITIONS, SIZE 20 CONTACT		
PROCESS SPECIFICATIONS: THIS DRAWING IS SUPPLIED FOR INFORMATION ONLY. DESIGN FEATURES, SPECIFICATIONS AND PERFORMANCE DATA SHOWN HEREON ARE THE PROPERTY OF THE AMPHENOL CORPORATION. NO RIGHTS OF REPRODUCTION ARE IMPLIED. ALL DIMENSIONS ARE SUBJECT TO NORMAL MANUFACTURING VARIATIONS.		SIZE <b>B C-</b>	TYPE <b>ATM13-12PX-12PX-BMXX</b>	DWG NO. <b>A1</b> REVISION
NEXT ASSY:		SCALE NONE	SHEET 3 OF 3	

TITLE: RECEPTACLE ATM HEADER, 2 X 12 POSITIONS, SIZE 20 CONTACT  
 DWG NO.: ATM13-12PX-12PX-BMXX  
 REV: A1  
 SH: 3  
 OF: 3