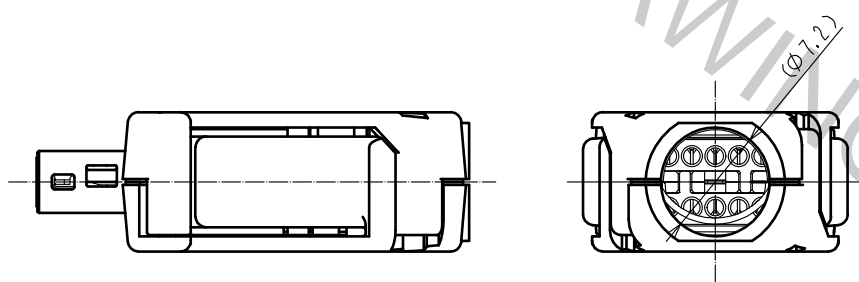
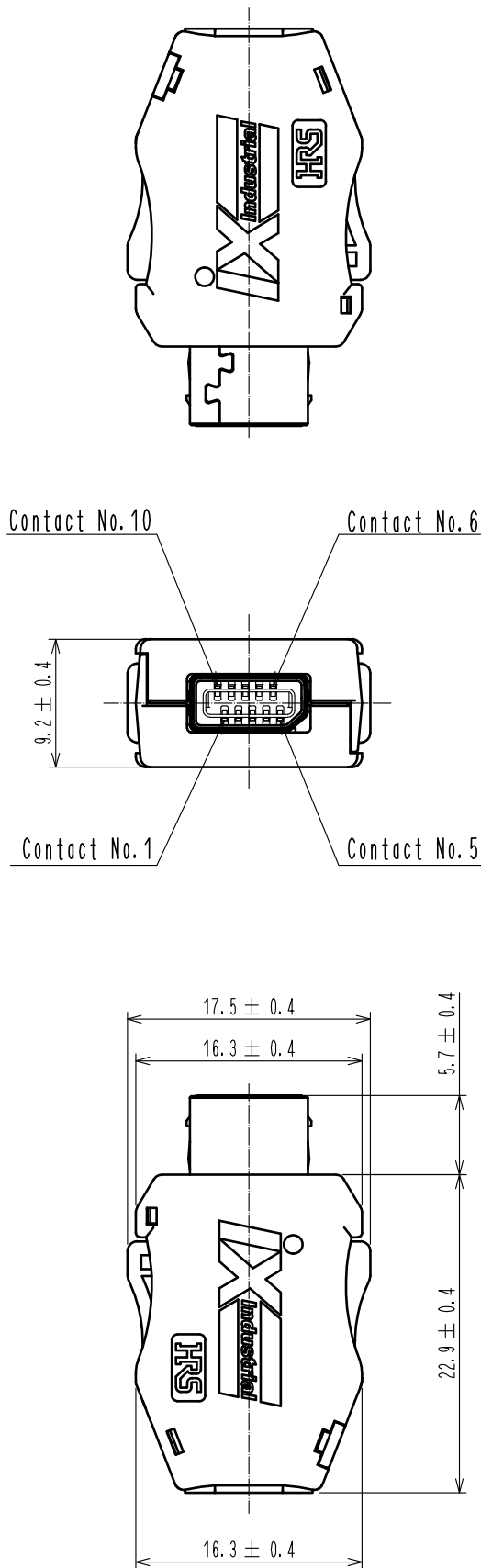


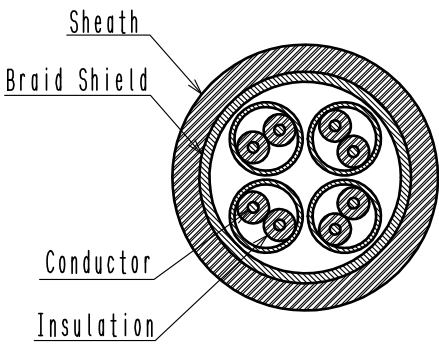
Mar.1.2019 Copyright 2019 HIROSE ELECTRIC CO., LTD. All Rights Reserved.
In case that the application demands a high level of reliability, such as automotive,
please contact a company representative for further information.



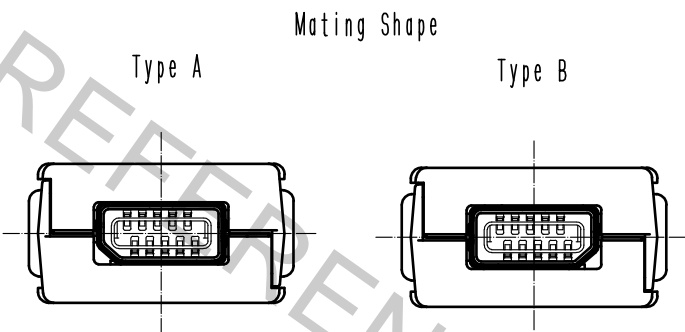
Notes. 1. Applicable cable condition is shown below.
In case of using a not applicable cable, please contact our sales representative.
Refer to the technical specification (ETAD-E3162-00) for wiring and assembly procedure.

Applicable Cable

Items		Applicable Condition
Conductor	Size	AWG#28 to 26
	Composition	7 stranded
	Material	Annealed copper wire
Insulation O.D.		φ0.95 to 1.05mm
Braid Shield		Tin plating
Sheath O.D.		φ6.3 to 7.2mm



2. This product (Type B) is used for non Ethernet applications
like signaling, serial or other industrial bus communication systems.
Please use Type A for 10/100Mbit/s and 1/10 Gbit/s Ethernet communication.

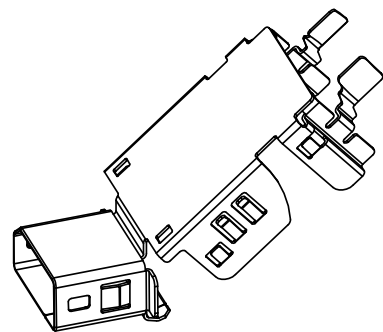


3 This product except plug unit is packed separately by the types of parts.
Shield Shell is packed in pre-bended state.(See next page.)

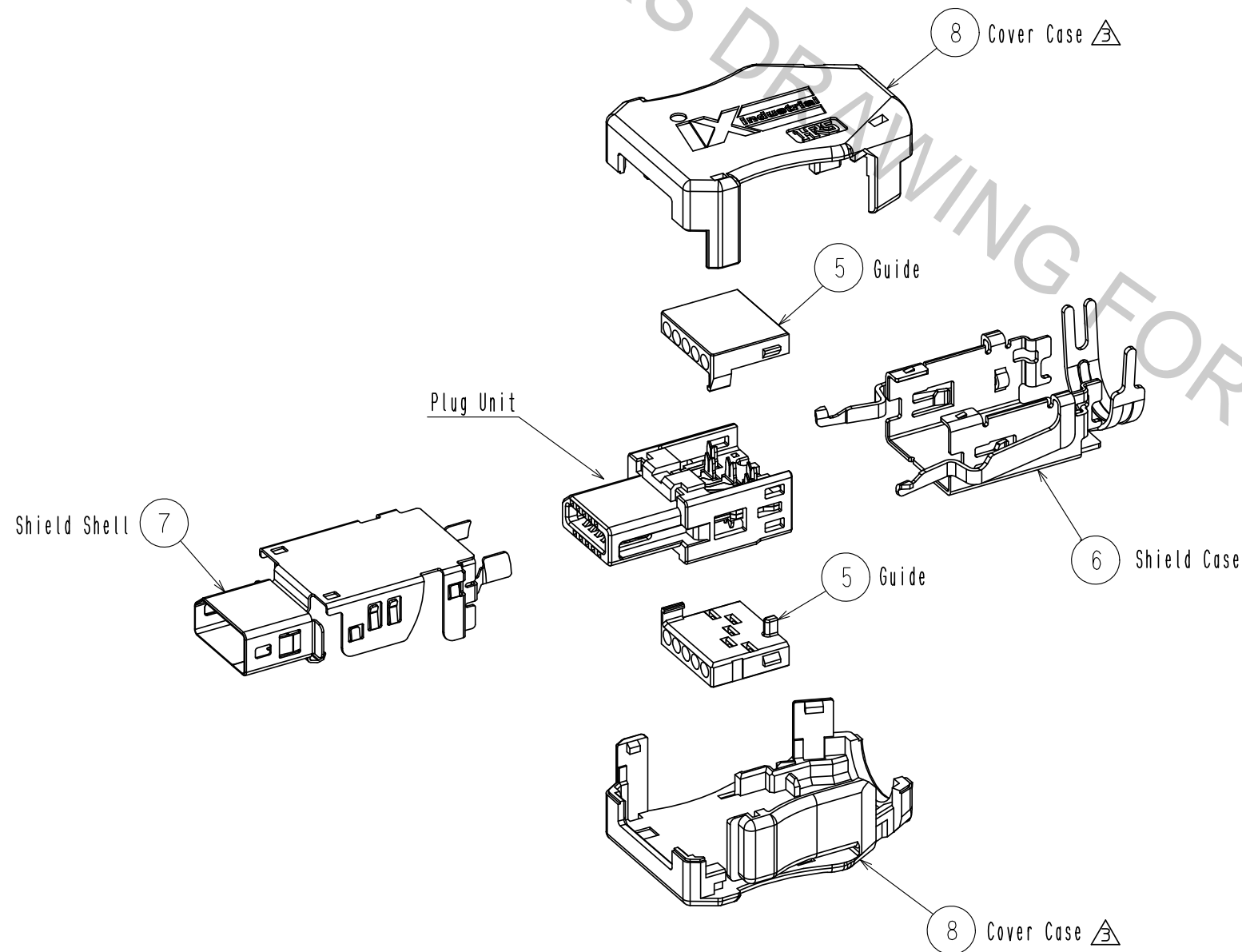
3	Stainless Steel		8	PC	Dark gray, UL94V-0		
2	PA	Black, UL94V-0	7	Stainless Steel	Nickel 0.2 μm min		
1	Copper Alloy	Contact area : Palladium-Nickel 0.75 μm min + Gold 0.05 μm min	6	Stainless Steel	Nickel 1μm min		
		Wiring area : Gold 0.03 μm min	5	PC	Clear, UL94V-0		
		Under plating : Nickel 2 μm min	4	PA	Black, UL94V-0		
NO.	MATERIAL	FINISH , REMARKS	NO.	MATERIAL	FINISH , REMARKS		
UNITS mm		SCALE 2 : 1	COUNT 	DESCRIPTION OF REVISIONS DIS-E-00001437	DESIGNED SG. CHAMURA	CHECKED KI. NAGANUMA	DATE 18.07.02
HIROSE ELECTRIC CO., LTD.		APPROVED :RI. TAKAYASU	17.03.28	DRAWING NO.	EDC-129487-01-00		
		CHECKED :KI. NAGANUMA	17.03.28	PART NO.	IX30G-B-10S-CV<7.0><01>		
		DESIGNED :HT. SATO	17.03.28	CODE NO.	CL251-0025-0-01		
		DRAWN :HT. SATO	17.03.28				

Mar.1.2019 Copyright 2019 HIROSE ELECTRIC CO., LTD. All Rights Reserved.
In case that the application demands a high level of reliability, such as automotive,
please contact a company representative for further information.

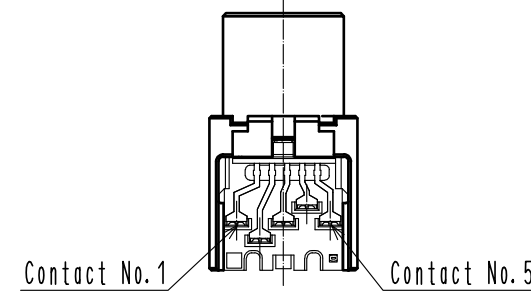
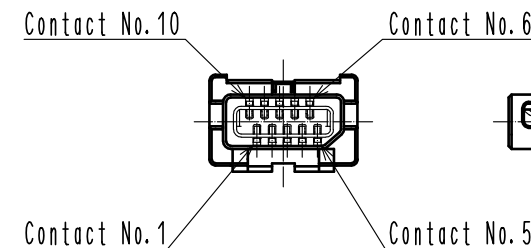
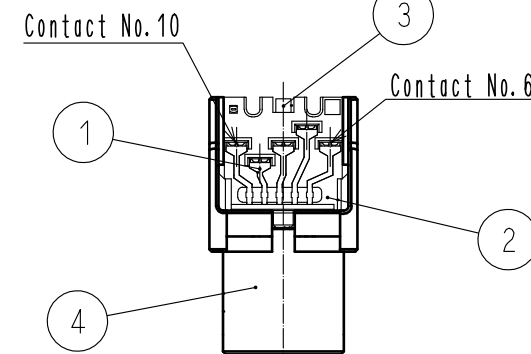
3 Shield Shell Delivery Form



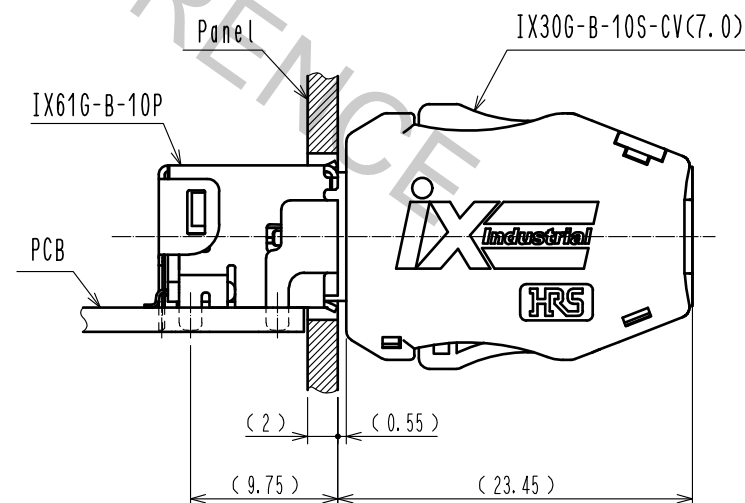
3 Product Structure



Plug Unit



Mating Condition



HR

DRAWING NO.	EDC-129487-01-00
PART NO.	IX30G-B-10S-CV(7.0)(01)
CODE NO.	CL251-0025-0-01

3/2