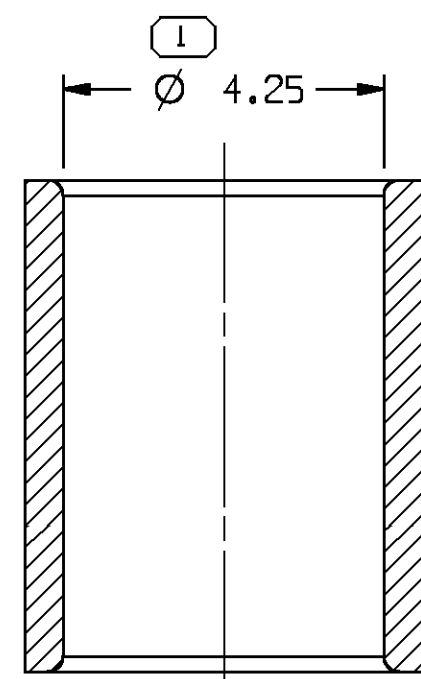
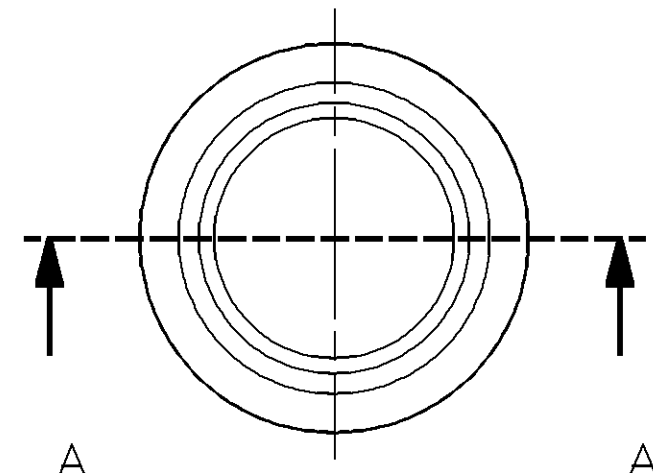
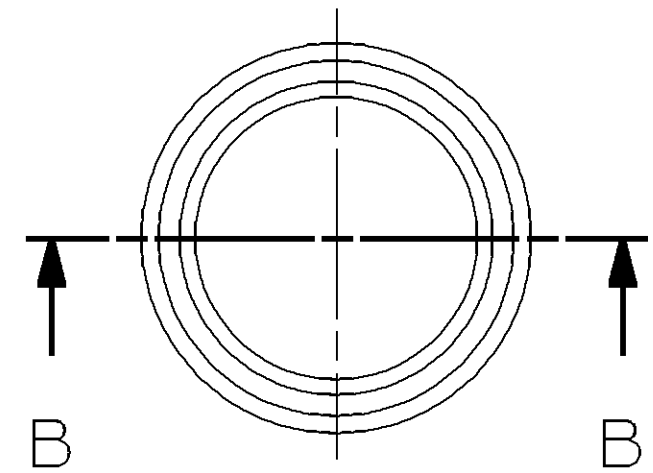
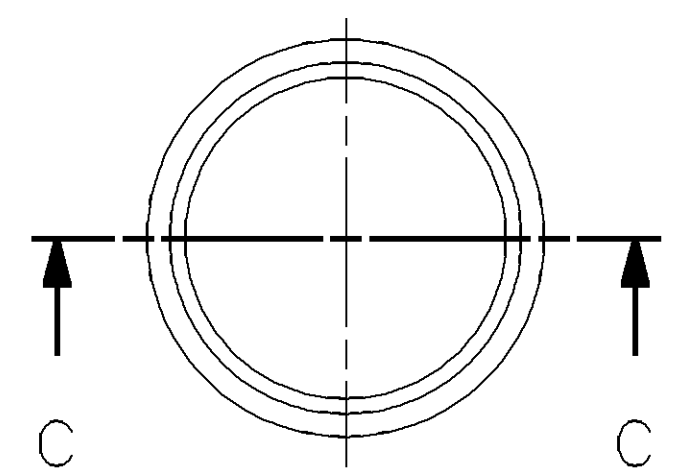


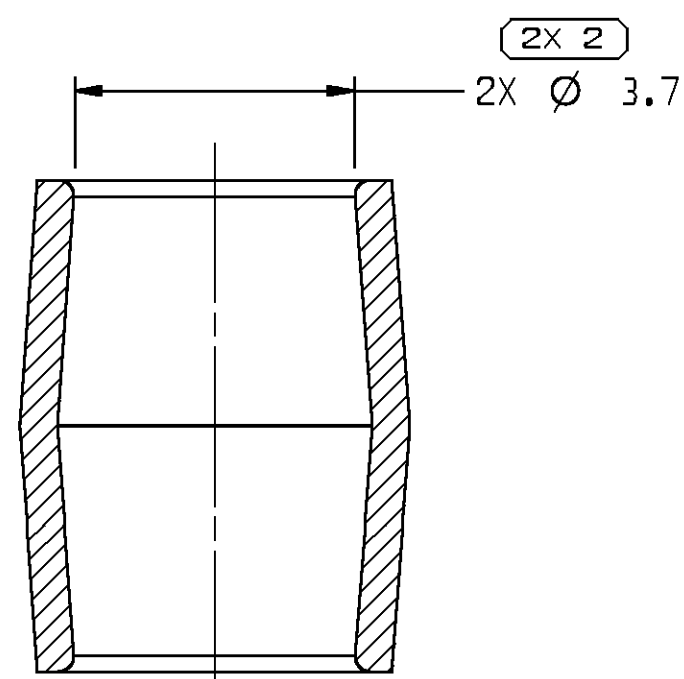
SECTION D-D

TYPE 104
SAME AS TYPE 103
EXCEPT AS SHOWN



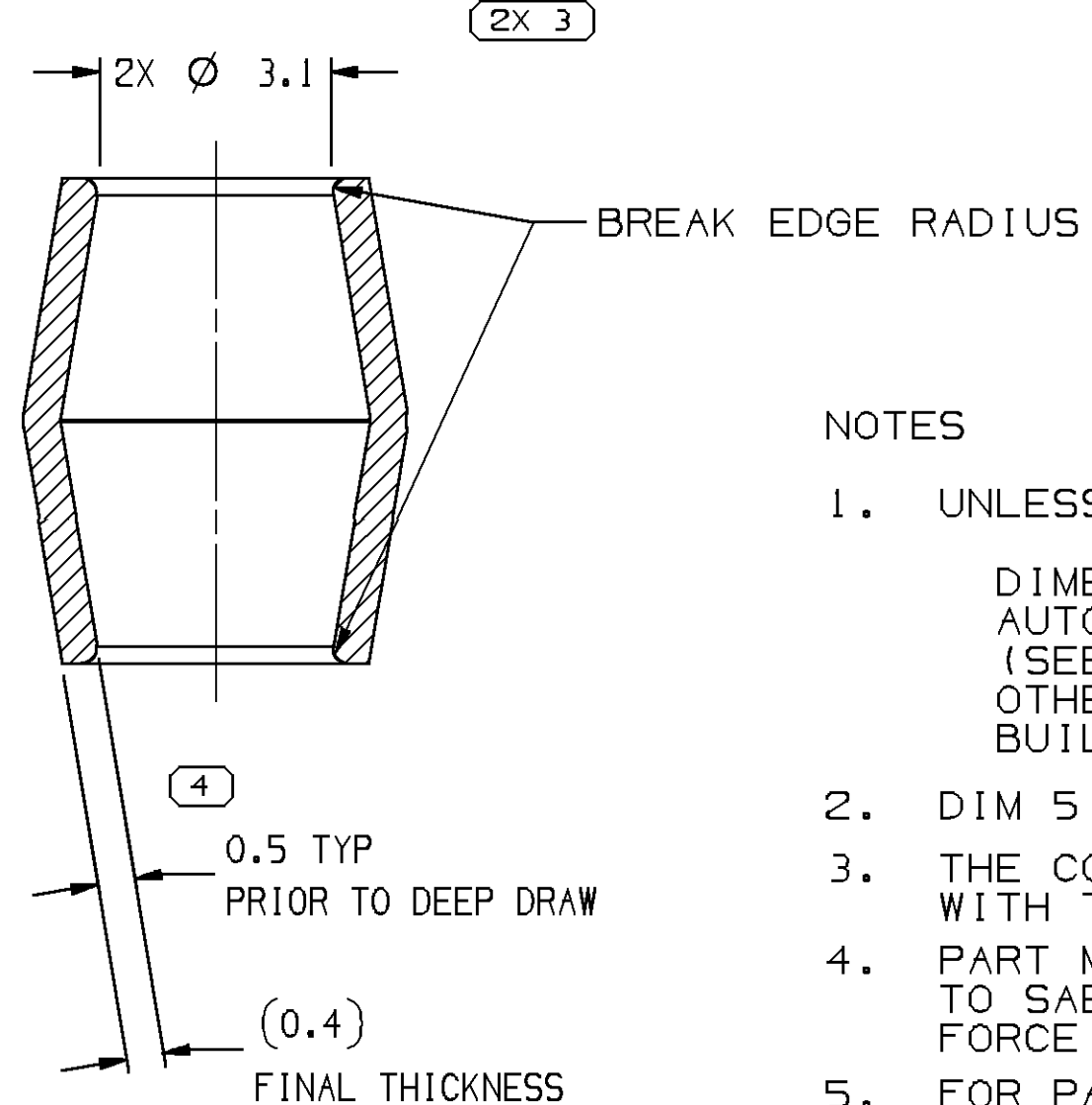
SECTION C-C

TYPE 103
SAME AS TYPE 101
EXCEPT AS SHOWN



SECTION B - B

TYPE 102
SAME AS TYPE 101
EXCEPT AS SHOWN



SECTION A - A
TYPE 101

- ## NOTES

1. UNLESS OTHERWISE SPECIFIED AND/OR INDICATED:

DIMENSIONS ARE TO FACE OF VIEW SHOWN AND AUTOMATICALLY ROUNDED BY COMPUTER FOR INSPECTION (SEE MATH MODEL FOR PRECISE DIMENSIONS). FOR ALL OTHER DIMENSIONS NOT SHOWN BUT REQUIRED FOR TOOL BUILD, SEE MATH MODEL FOR PRECISE TOOL PATH DATA.

2. DIM 5 IS THE POINT OF MEASUREMENT FOR DIM 7
3. THE COMPONENTS ON THIS TAXI ARE USED IN CONJUNCTION WITH THE COMPONENTS ON TAXI 13737701.
4. PART MECHANICAL AND ENVIRONMENTAL IS DESIGN TO CONFORM TO SAE/USCAR-37 (AUG 2008): CRIMP SHIELDED CABLE RETENTION FORCE IS 175N MIN.
5. FOR PART 33292550 PROCESS SENSITIVE DIMENSION IS DIM #9.

PLATING NOTE

OVERPLATE: MATTE TIN PLATE
99.9% 0.00008 INCHES MIN PER ASTM B545

33292550	01	AB	104	5.4 - 6.0	10 GA.
13737700	02	AF	103	3.84 - 4.09	10 GA.
13737699	02	AE	102	3.30 - 3.46	12 GA.
13737698	02	AF	101	2.57 - 2.87	14 GA.
PART NO	REV	N/P	TYPE	COAX CABLE INSULATION DIAMETER	SHIELDED, JACKETED CABLE SIZE

SYMBOL DEFINITION

A DIMENSION WITHOUT AN INSPECTION REPORT SYMBOL  DOES NOT REQUIRE INSPECTION. IT MAY BE CONTROLLED ON THE INDIVIDUAL COMPONENT DRAWING.

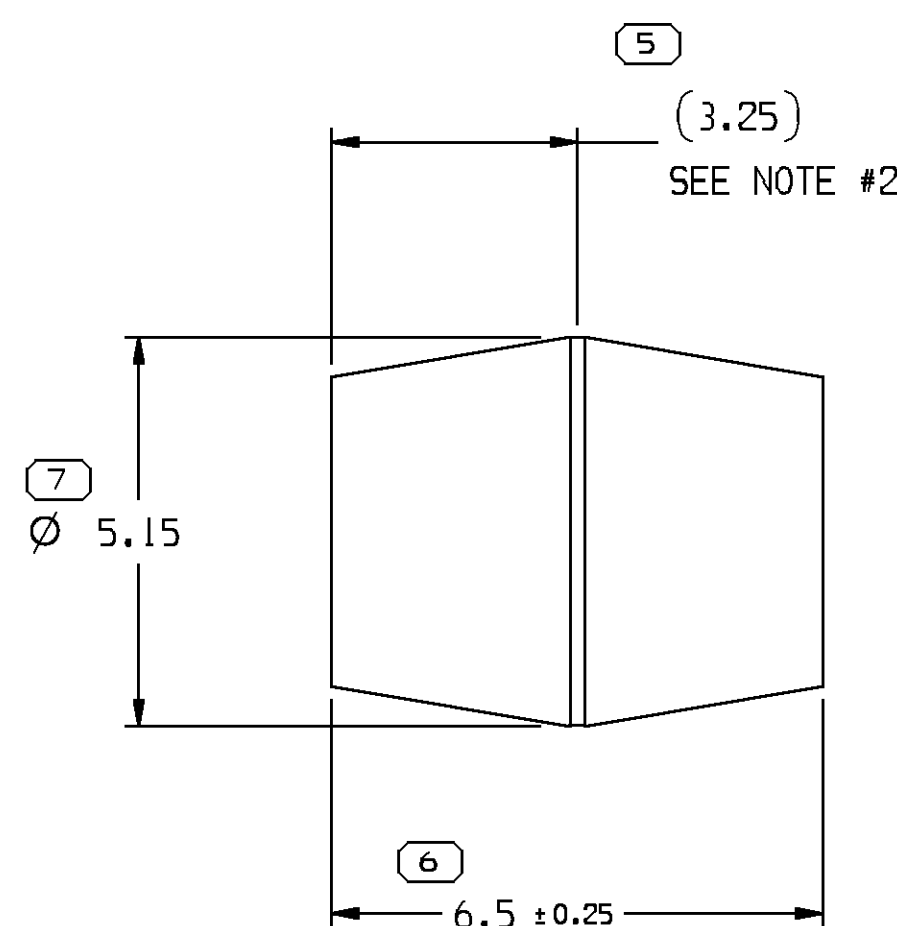
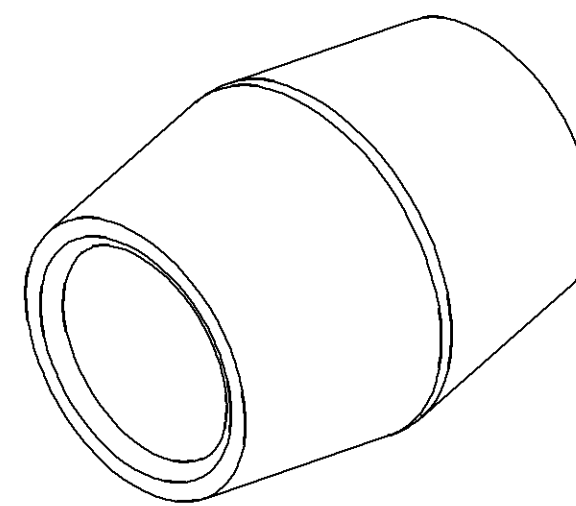
TOTAL NO OF INSPECTIONS REQUIRED	
----------------------------------	--

11

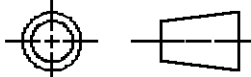


LAST NO.
USED

9

MISSING SYMBOLS

NO MISSING
SYMBOL NUMBER

— SEE NOTE #5

<p>A LINE DRAWN THROUGH A PART NUMBER INDICATES THAT PHYSICAL PARTS ARE NOT AVAILABLE FOR ORDERING.</p> <p>PART NUMBERS THAT DO NOT HAVE A LINE PRESENT INDICATE THAT PHYSICAL PARTS ARE AVAILABLE FOR ORDERING.</p> <p>CONTACT PARTIAL SALES TO ASSURE AVAILABILITY OF PARTS.</p>	
<p>DWG TYPE</p>	
<p>PART DRAWING</p>	
<p>STYLE</p>	
<p>VOLUME (CM³)</p>	<p>DISTR CODE</p>
<p>D</p>	
<p>UNLESS OTHERWISE SPECIFIED</p>	
<p>THIS DOCUMENT IS IN ACCORDANCE WITH ASME Y14.5M-1994 AS AMENDED BY THE GM GLOBAL DIMENSIONING AND TOLERANCING ADDENDUM-2001. SEPARATE PATTERNS OF FEATURES MAY BE DIMED SEPARATELY REGARDLESS OF DATUM REFERENCES.</p>	
<p>ALL DIMENSIONS ARE IN MILLIMETERS</p>	
<p>REFERENCE</p>	
<p>THIRD ANGLE PROJECTION</p> 	<p>DO NOT SCALE</p>  <p>USE MATH DATA</p> 

<h1 style="text-align: center;">DELPHI</h1> <p style="text-align: center;">DELPHI PACKARD ELECTRICAL/ELECTRONIC ARCHITECTURE</p> <p style="text-align: center;">WARREN, OH</p> <p style="text-align: center;">COPYRIGHT 2008 DELPHI CORPORATION AND/OR ITS AFFILIATES. ALL RIGHTS RESERVED.</p> <p style="text-align: center;">REVISED 2018</p> <p style="text-align: center;">THIS DRAWING IS THE PROPERTY OF DELPHI CORPORATION AND CONTAINS DELPHI CONFIDENTIAL INFORMATION. THE REPRODUCTION, DISTRIBUTION AND UTILIZATION OF THIS DOCUMENT OR ITS RELATED CAD DATA, AS WELL AS COMMUNICATION OF ANY CONTENT TO OTHERS, WITHOUT EXPRESS AUTHORIZATION, IS PROHIBITED.</p>									
DR								DATE	
APVD1 L. JONES								240C08	
APVD2 L. JONES								240C08	
APVD3 JOE GLADD								310C08	
APVD4									
APVD5									
SUBSTANCES OF CONCERN AND RECYCLED CONTENT PER DELPHI 10949001									
MATERIAL CDA 170 STOCK TEMPER IS ANNEALED PRIOR TO DEEP DRAWN SEE PLATING NOTE									
DRAWING NAME									
TAXI SLEV BUSHING ID= OD=									
DRAWING NUMBER									
13737697									
SIZE	SCALE	FRAME NO	SHEET NO	STG	REV	N/P			
A1	1:0.1	1 OF 1	1 OF 1	R	10				