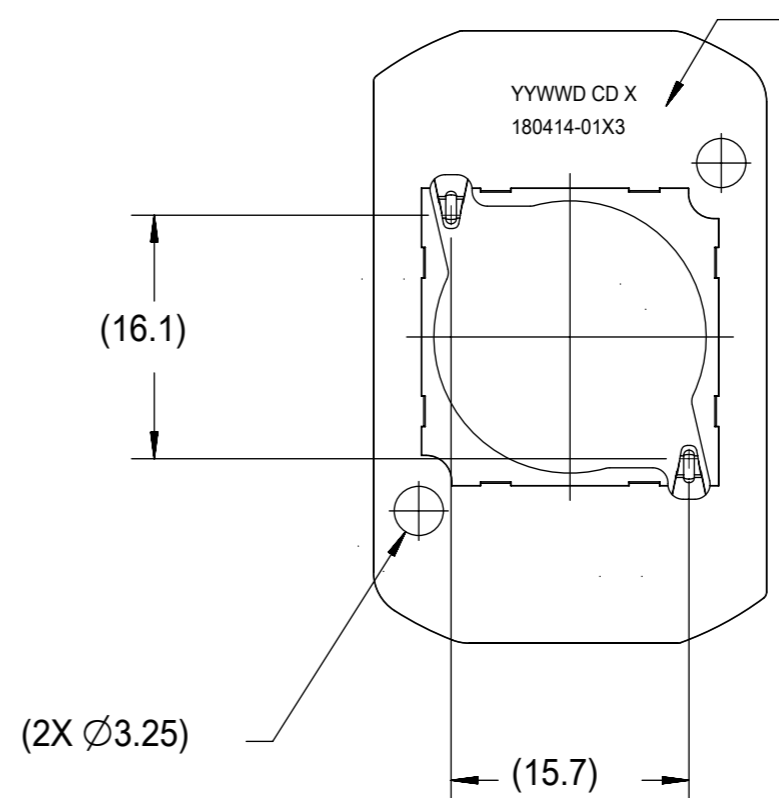
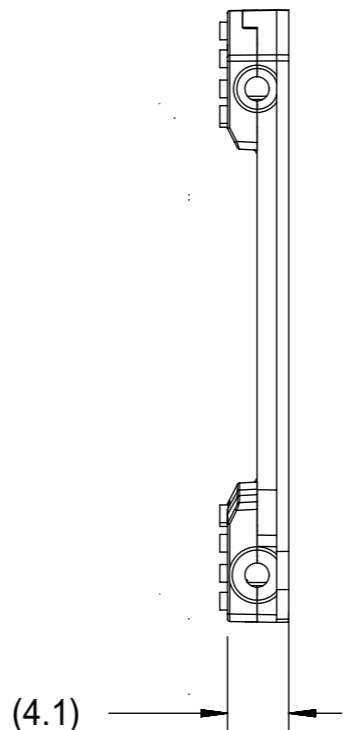
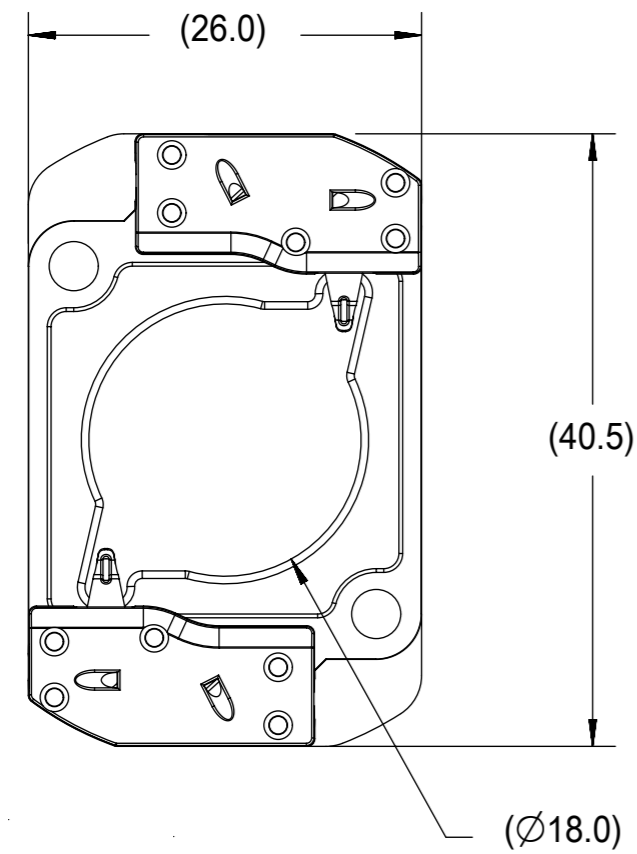
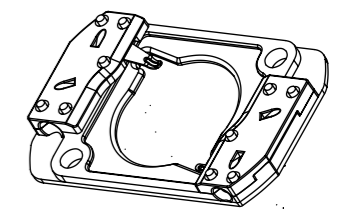


PART NUMBER	DESCRIPTION	MATERIAL	AGENCY APPROVAL
180414-0103	COB LED HOLDER 19.0MM X 19.0MM SQUARE	POLYAMIDE (PA66) GLASS FILLED, COLOR: NATURAL	UL496 FILE E345583
180414-0113	COB LED HOLDER 19.0MM X 19.0MM SQUARE	POLYESTER (PBT) GLASS FILLED, COLOR: WHITE	UL496 FILE E345583
180414-0203	COB LED HOLDER 19.0MM X 19.0MM SQUARE WITH TAB CAP	POLYAMIDE (PA66) GLASS FILLED, COLOR: NATURAL	UL496 FILE E345583
180414-0213	COB LED HOLDER 19.0MM X 19.0MM SQUARE WITH TAB CAP	POLYESTER (PBT) GLASS FILLED, COLOR: WHITE	UL496 FILE E345583

HOLDER ASSEMBLY
P/N 180414-0103
P/N 180414-0113



PART MARKED WITH
DATE CODE (YYWWDD)
MFG PLANT (CD)
REVISION (X)
PART NUMBER (180414-01X3)

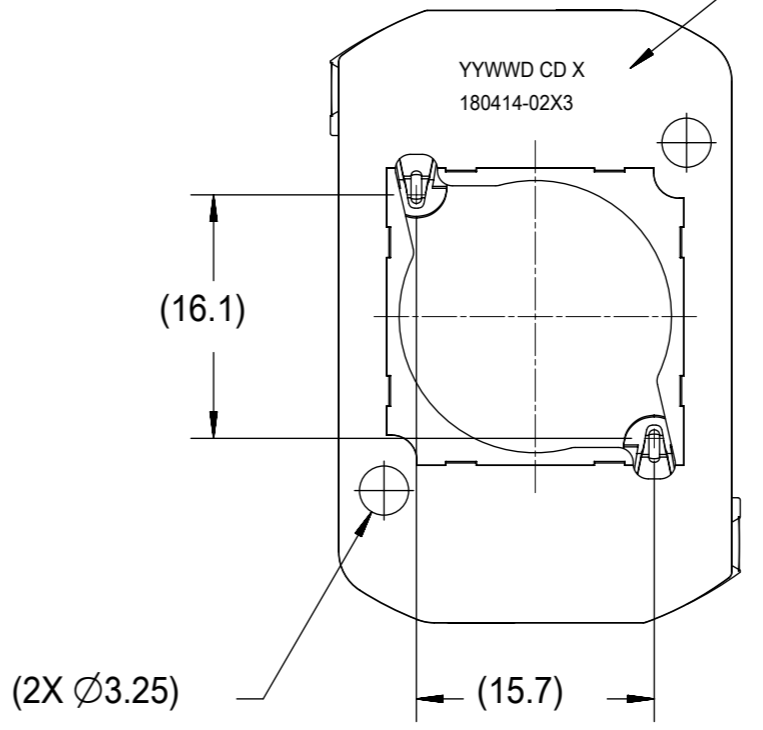
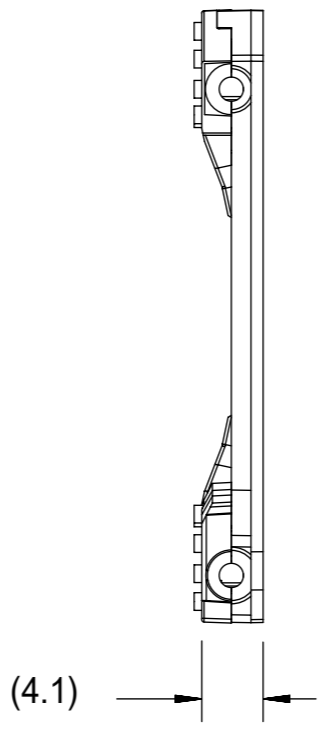
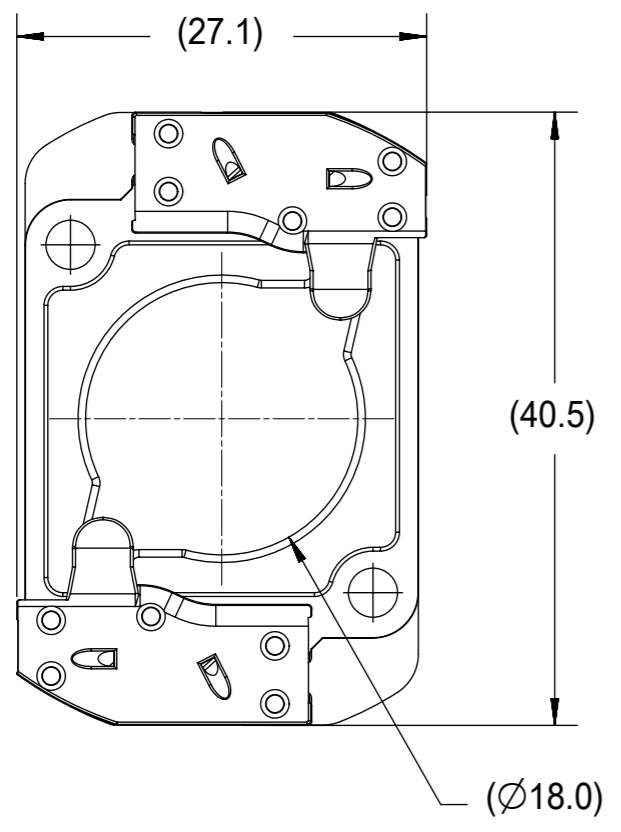


ISOMETRIC VIEW 1
SCALE 1:1

- NOTES:
1. MATERIALS: HOUSING: SEE CHART; TERMINAL: COPPER ALLOY
 2. FINISHES: TERMINAL: NICKEL (Ni) UNDERPLATE 1.27 µm, SELECT TIN (Sn) 2.54µm, SELECT GOLD (Au) 0.76µm
 3. PRODUCT SPECIFICATION: PS-180414-001
 4. PACKAGING SPECIFICATION: PK-180419-006
 5. APPLICATION SPECIFICATION: AS-180412-001
 6. SEE SHEET 3 FOR APPLICATION NOTES
 7. ELV AND ROHS COMPLIANT
 8. ALL DIMENSIONS IN PARENTHESIS (XX.XX) ARE FOR REFERENCE ONLY.

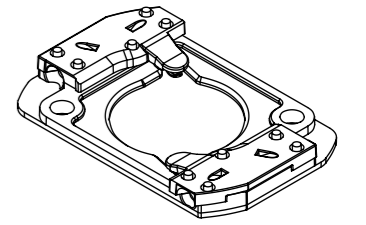
SYMBOLS	THIS DRAWING CONTAINS INFORMATION THAT IS PROPRIETARY TO MOLEX ELECTRONIC TECHNOLOGIES, LLC AND SHOULD NOT BE USED WITHOUT WRITTEN PERMISSION		CURRENT REV DESC:		molex
	DIMENSION UNITS	SCALE			
▽ = 0	mm	1:1			COB LED HOLDER 19.0 MM X 19.0 MM SQUARE
▽ = 0	GENERAL TOLERANCES (UNLESS SPECIFIED)				
▽ = 0	ANGULAR TOL ± 0.5°				PRODUCT CUSTOMER DRAWING
▽ = 0	4 PLACES	±	EC NO: 603651		
▽ = 0	3 PLACES	±	DRWN: SCHEN76	2018/08/22	DOCUMENT NUMBER
▽ = 0	2 PLACES	± 0.13	CHK'D: BPISZCZOR	2018/08/30	
▽ = 0	1 PLACE	± 0.25	APPR: BPISZCZOR	2018/08/30	DOC TYPE
□ = 0	0 PLACES	±	INITIAL REVISION:		DOC PART
■ = 0	DRAFT WHERE APPLICABLE MUST REMAIN WITHIN DIMENSIONS		DRWN: MCOLE	2012/05/24	REVISION
▽ = 0	THIRD ANGLE PROJECTION		APPR: DMCGOWAN	2012/08/06	B4
		DRAWING	SERIES	MATERIAL NUMBER	CUSTOMER
		A3-SIZE	180414		GENERAL MARKET
				SHEET NUMBER	1 OF 4

HOLDER ASSEMBLY WITH TAB CAP
 P/N 180414-0203
 P/N 180414-0213



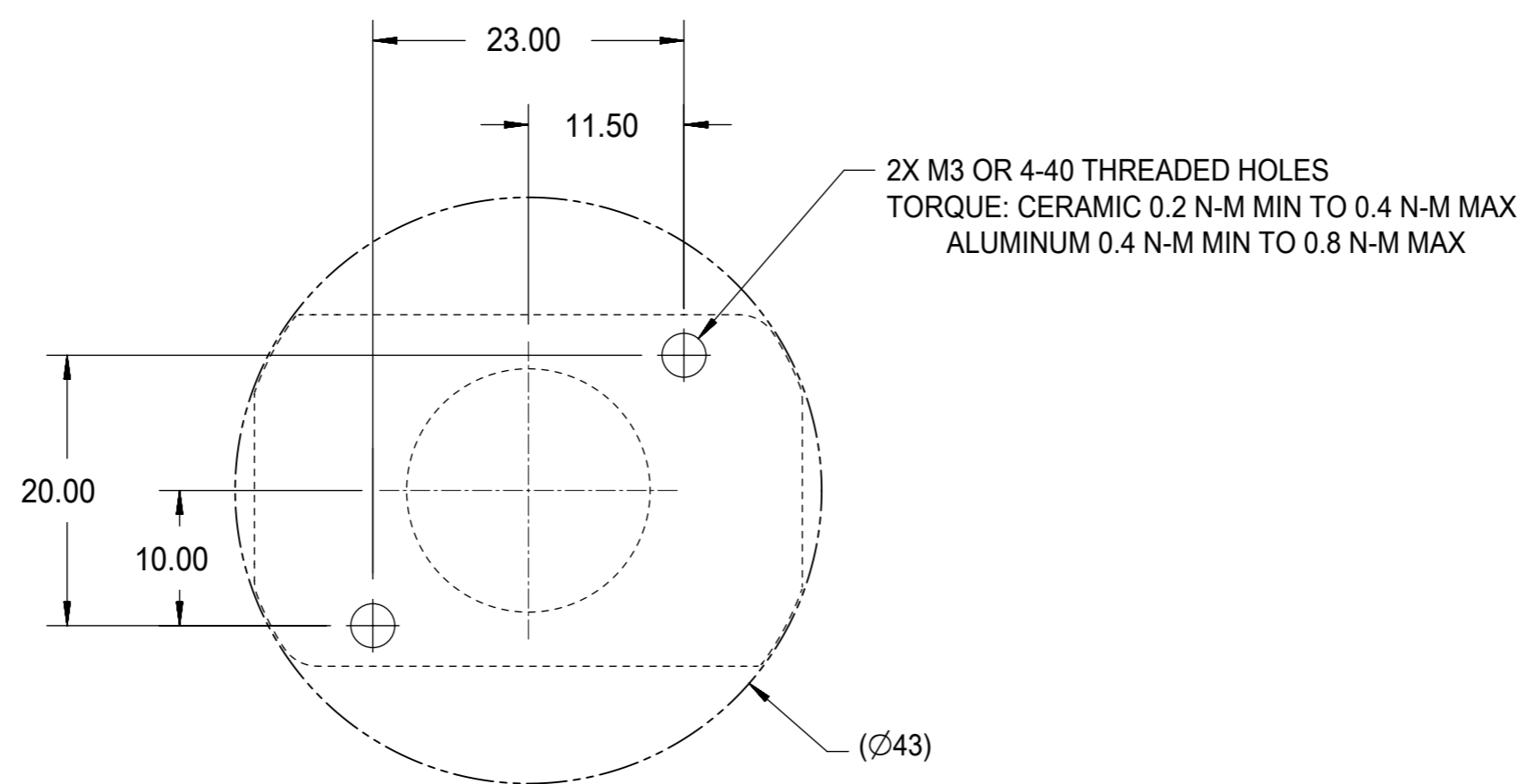
PART MARKED WITH
 DATE CODE (YYWWD)
 MFG PLANT (CD)
 REVISION (X)
 PART NUMBER (180414-02X3)

YYWWD CD X
 180414-02X3



ISOMETRIC VIEW 2
 SCALE 1:1

SYMBOLS ▽ = 0 ▽ = 0 ▽ = 0 ▽ = 0 ▽ = 0 ▽ = 0 ▽ = 0 ▽ = 0 ▽ = 0 ▽ = 0 ▽ = 0 ▽ = 0	THIS DRAWING CONTAINS INFORMATION THAT IS PROPRIETARY TO MOLEX ELECTRONIC TECHNOLOGIES, LLC AND SHOULD NOT BE USED WITHOUT WRITTEN PERMISSION		DIMENSION UNITS: mm		SCALE: 1:1	CURRENT REV DESC:			molex		
	GENERAL TOLERANCES (UNLESS SPECIFIED)		ANGULAR TOL ± 0.5°		EC NO: 603651 DRWN: SCHEN76 2018/08/22 CHK'D: BPISZCZOR 2018/08/30 APPR: BPISZCZOR 2018/08/30			COB LED HOLDER 19.0 MM X 19.0 MM SQUARE			
	4 PLACES ± 3 PLACES ± 2 PLACES ± 0.13 1 PLACE ± 0.25 0 PLACES ±		INITIAL REVISION: DRWN: MCOLE 2012/05/24 APPR: DMCGOWAN 2012/08/06			PRODUCT CUSTOMER DRAWING			DOCUMENT NUMBER: SD-180414-103		
	DRAFT WHERE APPLICABLE MUST REMAIN WITHIN DIMENSIONS		THIRD ANGLE PROJECTION		DRAWING: A3-SIZE		SERIES: 180414		MATERIAL NUMBER:		CUSTOMER: GENERAL MARKET
SHEET NUMBER: 2 OF 4			REVISION:			DOC PART: 001			REVISION: B4		

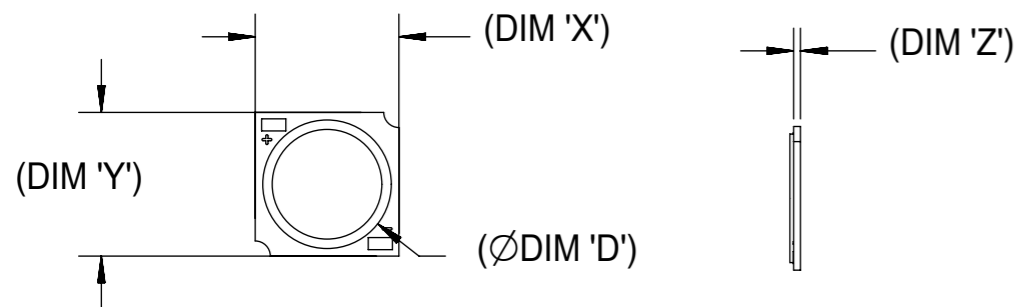


RECOMMENDED MOUNTING DIMENSIONIS

NOTES:
 1. WIRE GAUGE: 18, 20, OR 22 AWG, SOLID OR STRANDED WITH TIN OVERCOAT. STRIP LENGTH 10MM +2.0/-0.0MM.
 RECOMMENDED MAXIMUM DIAMETER AFTER TINNING: 1.40MM.
 LARGER DIAMETER WIRES ARE ACCEPTABLE IF FULLY INSERTABLE IN WIRE TRAP AND NO WITHDRAWAL WITHIN 20N FORCE.

THIS DRAWING CONTAINS INFORMATION THAT IS PROPRIETARY TO MOLEX ELECTRONIC TECHNOLOGIES, LLC AND SHOULD NOT BE USED WITHOUT WRITTEN PERMISSION											
SYMBOLS		DIMENSION UNITS		SCALE		CURRENT REV DESC:					
▽ = 0		mm		1:1		EC NO: 603651					
▽ = 0		GENERAL TOLERANCES (UNLESS SPECIFIED)				DRWN: SCHEN76 2018/08/22				COB LED HOLDER 19.0 MM X 19.0 MM SQUARE	
▽ = 0		ANGULAR TOL ± 0.5°				CHK'D: BPISZCZOR 2018/08/30					
▽ = 0		4 PLACES ±				APPR: BPISZCZOR 2018/08/30				PRODUCT CUSTOMER DRAWING	
▽ = 0		3 PLACES ±				INITIAL REVISION:					
▽ = 0		2 PLACES ± 0.13				DRWN: MCOLE 2012/05/24				DOCUMENT NUMBER SD-180414-103	
▽ = 0		1 PLACE ± 0.25				APPR: DMCGOWAN 2012/08/06					
▽ = 0		0 PLACES ±				THIRD ANGLE PROJECTION		DRAWING		SERIES	
□ = 0		DRAFT WHERE APPLICABLE MUST REMAIN WITHIN DIMENSIONS						A3-SIZE		180414	
▽ = 0		MATERIAL NUMBER		CUSTOMER		SHEET NUMBER		DOC TYPE		DOC PART	
				GENERAL MARKET		3 OF 4		PSD		001 B4	

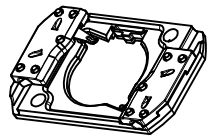
COB MFG	TYPE	DIM 'X'	DIM 'Y'	DIM 'Z'	DIM 'D'
CITIZEN	CLL030, CLL032, CLU034, CLU036, CLU038	19.0	19.0	0.90	17.0
TRIDONIC	SLE G5 LES15	19.0	19.0	0.90	15.0
SEOUL	ZC12, ZC18	19.0	19.0	0.90	16.0
CITIZEN	CLU720, CLU721	19.0	19.0	0.90	13.5
EVERLIGHT	EAHP1919WA*, EAHP1919WB*, EAHP1919WC*	19.0	19.0	0.90	15.5
EVERLIGHT	EA1919 36V/16W	19.0	19.0	0.90	15.5
EVERLIGHT	EA1919 36V/19W	19.0	19.0	0.90	15.5
EVERLIGHT	EA1919 36V/26W	19.0	19.0	0.90	15.5
VOSSLOH-SCHWABE	DMC114C	19.0	19.0	1.00	11.9
VOSSLOH-SCHWABE	DMC124***F, DMC125***F	19.0	19.0	1.00	13.1
VOSSLOH-SCHWABE	DMC125C	19.0	19.0	1.00	13.1
VOSSLOH-SCHWABE	DMC128***F	19.0	19.0	1.00	15.8
BRIDGELUX	H15	19.0	19.0	1.10	16.5
BRIDGELUX	GEN. 7 V13	19.0	19.0	1.00	15.0



COB LED
SCALE 1:1

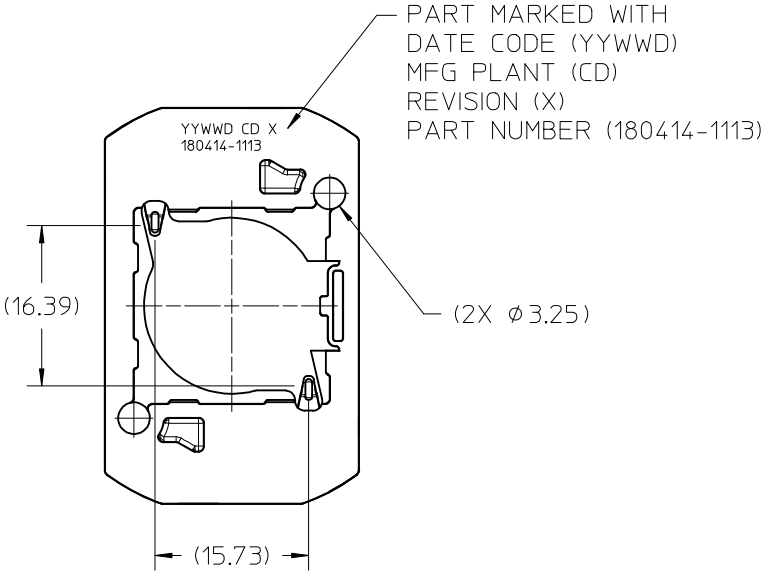
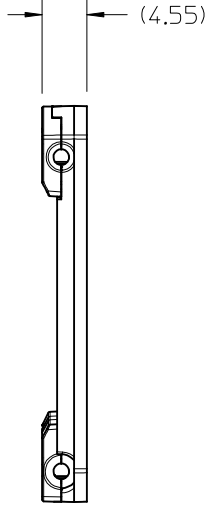
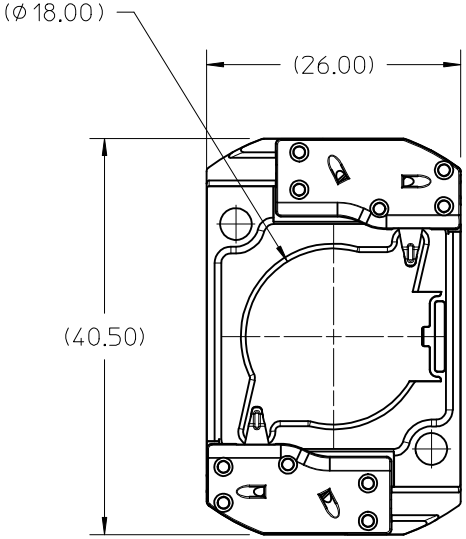
SYMBOLS	THIS DRAWING CONTAINS INFORMATION THAT IS PROPRIETARY TO MOLEX ELECTRONIC TECHNOLOGIES, LLC AND SHOULD NOT BE USED WITHOUT WRITTEN PERMISSION		CURRENT REV DESC:		molex
	DIMENSION UNITS	SCALE			
▽ = 0	mm	1:1			COB LED HOLDER 19.0 MM X 19.0 MM SQUARE
▽ = 0	GENERAL TOLERANCES (UNLESS SPECIFIED)				
▽ = 0	ANGULAR TOL ± 0.5°				PRODUCT CUSTOMER DRAWING
▽ = 0	4 PLACES ±		EC NO: 603651		
▽ = 0	3 PLACES ±		DRWN: SCHEN76 2018/08/22		
▽ = 0	2 PLACES ± 0.13		CHK'D: BPISZCZOR 2018/08/30		
▽ = 0	1 PLACE ± 0.25		APPR: BPISZCZOR 2018/08/30		
▽ = 0	0 PLACES ±		INITIAL REVISION:		
☒ = 0	DRAFT WHERE APPLICABLE MUST REMAIN WITHIN DIMENSIONS		DRWN: MCOLE 2012/05/24		DOCUMENT NUMBER SD-180414-103
☒ = 0			APPR: DMCGOWAN 2012/08/06		
		THIRD ANGLE PROJECTION	DRAWING	SERIES	DOC TYPE
			A3-SIZE	180414	PSD
		MATERIAL NUMBER		CUSTOMER	DOC PART
				GENERAL MARKET	001
				REVISION	
				B4	
				SHEET NUMBER	
				4 OF 4	

10	9	8	7	6	5	4	3	2	1	
PART NUMBER	DESCRIPTION		POCKET DEPTH	HOUSING	TERMINAL	CAP				
180414-1113	COB LED HOLDER ASSEMBLY		0.90	180413-1113	180155-0133	180154-0105				
180414-2113	COB LED HOLDER ASSEMBLY		0.75	180413-2113	180155-0133	180154-0105				



ISO VIEW 1
SCALE 1:1

P/N 180414-1113 HOLDER ASSEMBLY
(0.90 POCKET DEPTH)



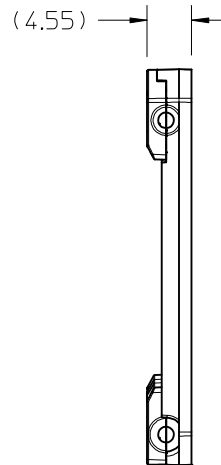
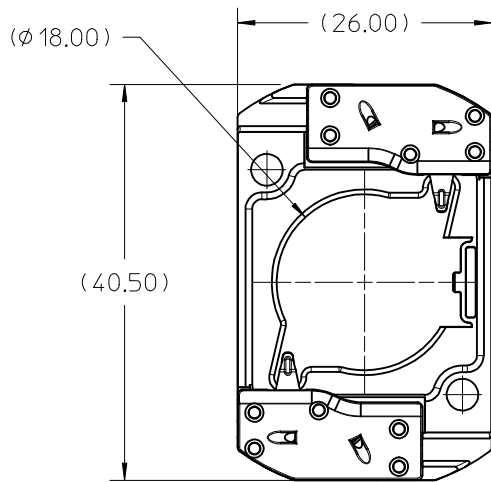
PART MARKED WITH
DATE CODE (YYWWD)
MFG PLANT (CD)
REVISION (X)
PART NUMBER (180414-1113)

- NOTES:
1. MATERIALS: HOUSING AND CAPS: POLYESTER PBT GLASS FILLED; COLOR: WHITE; TERMINAL: COPPER ALLOY
 2. FINISHES: TERMINAL CONTACT: SELECT GOLD OVER NICKEL WIRE TRAP: SELECT TIN OVER NICKEL
 3. PRODUCT SPECIFICATION: 180414-0000-PS
 4. PACKAGING SPECIFICATION: PK-180419-006
 5. UL:OLFB2 UL496 FILE NO. E345583
 6. ELV AND ROHS COMPLIANT
 7. FOR USE WITH: 19.0 MM X 19.0 MM COB LED
 8. WIRE GAUGE: 18, 20, AND 22 AWG, SOLID OR STRANDED WITH TIN OVERCOAT. STRIP LENGTH 10MM +2.0/-0.0MM.
 9. ALL DIMENSIONS IN PARENTHESES (XX.XX) ARE FOR REFERENCE ONLY

ENTER DESCRIPTION EC NO: SSL2017-0024 DRWN:LZABJANOVSKI 2017/02/21 CHKD: APPR:BPISZCZOR 2017/03/07 REV B4	QUALITY SYMBOLS	GENERAL TOLERANCES (UNLESS SPECIFIED)	DIMENSION STYLE	SCALE	DESIGN UNITS	THIRD ANGLE PROJECTION
	$\nabla F/0$ $\nabla F/0$ $\nabla F/0$	mm	MM ONLY	2:1	METRIC	COB LED HOLDER ASSEMBLY 19.0 MM X 19.0 MM SQUARE molex
		INCH	DRAWN BY	DATE	TITLE	
		4 PLACES ± --- ± --- 3 PLACES ± --- ± --- 2 PLACES ± 0.13 ± --- 1 PLACE ± 0.25 ± --- 0 PLACE ± --- ± ---	MCOLE	2013/12/09	COB LED HOLDER ASSEMBLY	
	ANGULAR ± 1/2°	CHECKED BY	DATE	DATE	DOCUMENT NO.	SHEET NO.
	DRAFT WHERE APPLICABLE MUST REMAIN WITHIN DIMENSIONS		APPROVED BY	DATE	SD-180414-113	1 OF 6
			DMCGOWAN	2013/12/09		
			MATERIAL NO.			
			SEE CHART			
			SIZE B			
			THIS DRAWING CONTAINS INFORMATION THAT IS PROPRIETARY TO MOLEX INCORPORATED AND SHOULD NOT BE USED WITHOUT WRITTEN PERMISSION			

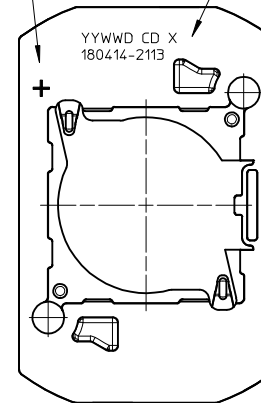
10 9 8 7 6 5 4 3 2 1

P/N 180414-2113 HOLDER ASSEMBLY (0.75 POCKET DEPTH)



PART MARKED WITH POLARITY SIGN "+"

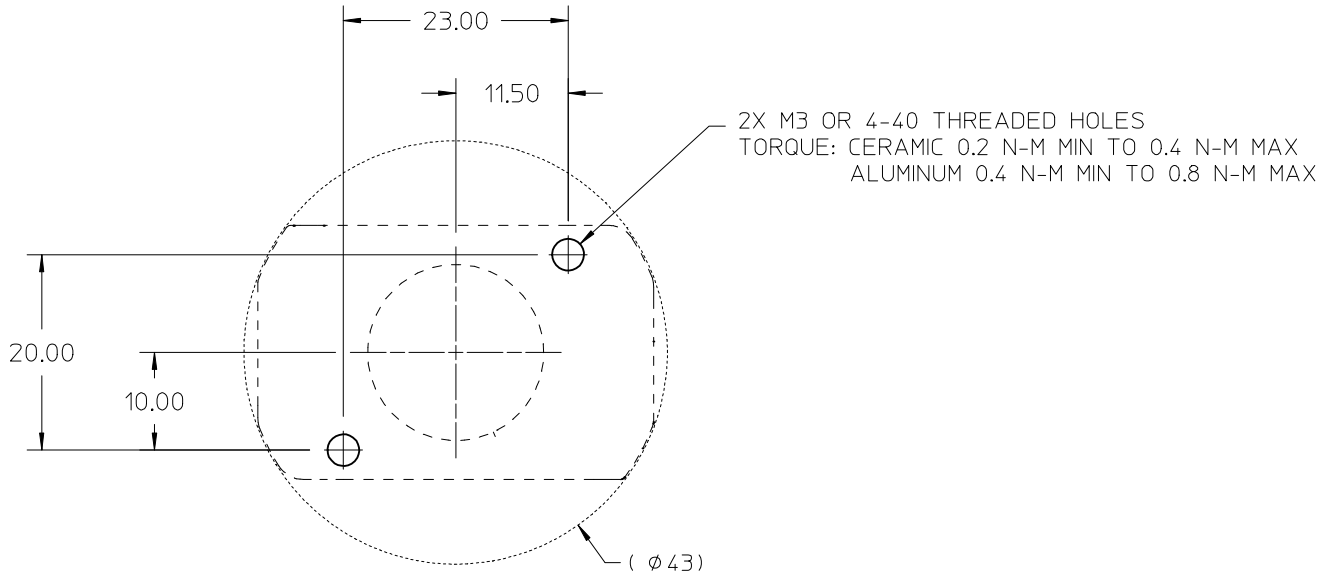
PART MARKED WITH DATE CODE (YYWWD)
MFG PLANT (CD)
REVISION (X)
PART NUMBER (180414-2113)



ENTER DESCRIPTION EC NO: SSL2017-0024 DRWNL: ZAB.JANOVSKI 2017/02/21 CHKD: APPR: BPT.SZCZOR 2017/03/07 REV	QUALITY SYMBOLS	GENERAL TOLERANCES (UNLESS SPECIFIED)		DIMENSION STYLE MM ONLY		SCALE 2:1	DESIGN UNITS METRIC	THIRD ANGLE PROJECTION	
	▽=0	mm	INCH	DRAWN BY	DATE	TITLE COB LED HOLDER ASSEMBLY 19.0 MM X 19.0 MM SQUARE			
	▽=0	4 PLACES ± --- ± ---	3 PLACES ± --- ± ---	MCOLE	2013/12/09				
	▽=0	2 PLACES ± 0.13 ± ---	1 PLACE ± 0.25 ± ---	0 PLACE ± --- ± ---	CHECKED BY	DATE	molex		
▽=0	ANGULAR ± 1/2°			MCOLE	2013/12/09	DOCUMENT NO.			
B4	DRAFT WHERE APPLICABLE MUST REMAIN WITHIN DIMENSIONS			MATERIAL NO.		SD-180414-113		2 OF 6	
				SEE CHART		THIS DRAWING CONTAINS INFORMATION THAT IS PROPRIETARY TO MOLEX INCORPORATED AND SHOULD NOT BE USED WITHOUT WRITTEN PERMISSION			

9 8 7 6 5 4 3 2 1

10 9 8 7 6 5 4 3 2 1



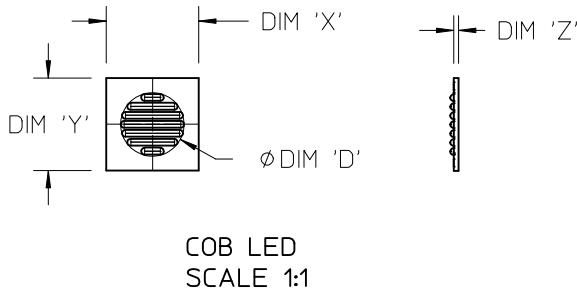
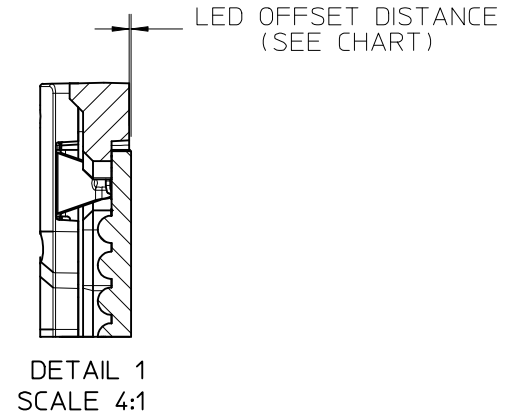
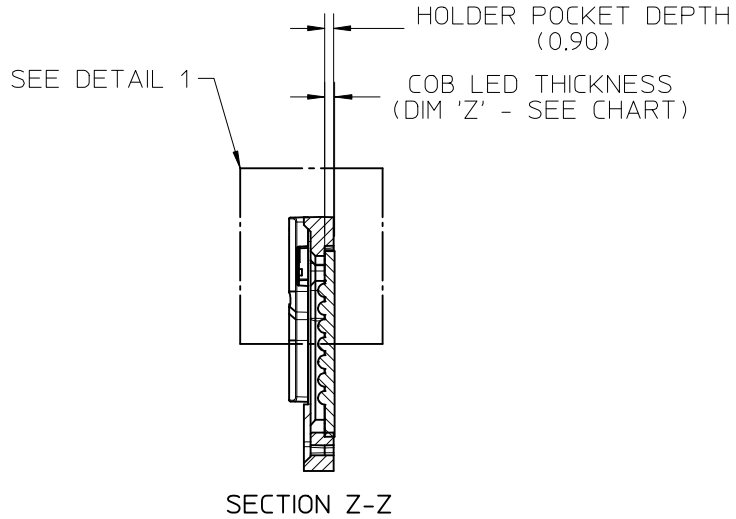
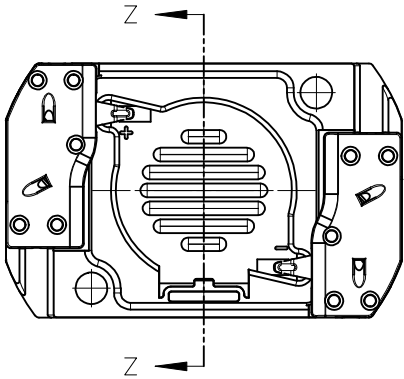
RECOMMENDED MOUNTING DIMENSIONS

ENTER DESCRIPTION EC NO: SSL2017-0024 DRWNL:ZAB.JANOVSKI 2017/02/21 CHKD: APPR:BPISZCZOR 2017/03/07 REV	QUALITY SYMBOLS	GENERAL TOLERANCES (UNLESS SPECIFIED)		DIMENSION STYLE MM ONLY		SCALE 2:1	DESIGN UNITS METRIC	THIRD ANGLE PROJECTION	
	$\nabla = 0$	mm	INCH	DRAWN BY	DATE	TITLE COB LED HOLDER ASSEMBLY 19.0 MM X 19.0 MM SQUARE			
	$\nabla = 0$	4 PLACES \pm ---	\pm ---	MCOLE	2013/12/09				
	$\nabla = 0$	3 PLACES \pm ---	\pm ---	CHECKED BY	DATE	DOCUMENT NO. SD-180414-113			
	$\nabla = 0$	2 PLACES ± 0.13	\pm ---	MCOLE	2013/12/09				
$\nabla = 0$	1 PLACE ± 0.25	\pm ---	APPROVED BY	DATE					
		0 PLACE \pm ---	\pm ---	DMCGOWAN	2013/12/09	SHEET NO. 3 OF 6			
B4		ANGULAR $\pm 1/2^\circ$		MATERIAL NO.					
		DRAFT WHERE APPLICABLE MUST REMAIN WITHIN DIMENSIONS		SEE CHART					

9 8 7 6 5 4 3 2 1

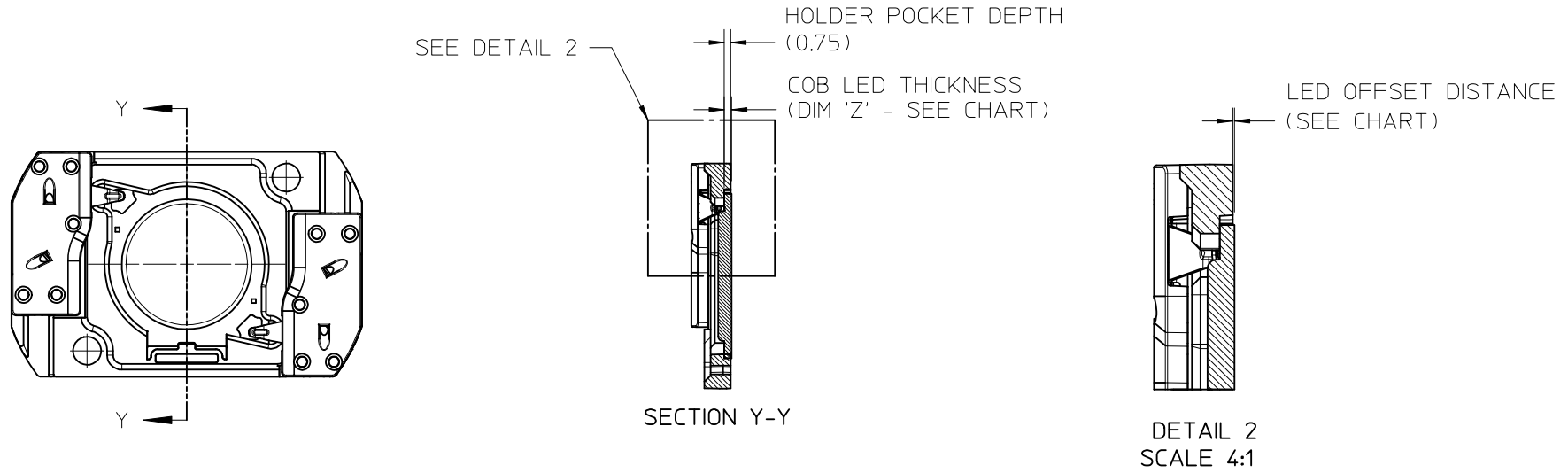
10	9	8	7	6	5	4	3	2	1
COB MFG	TYPE		DIM 'X'	DIM 'Y'	DIM 'Z'	DIM 'D'	OFFSET		
VOSSLOH-SCHWABE	DMC114C		19.0	19.0	1.0	11.9	0.10		
VOSSLOH-SCHWABE	DMC124***F, DMC125***F		19.0	19.0	1.0	13.1	0.10		
VOSSLOH-SCHWABE	DMC125C		19.0	19.0	1.0	13.1	0.10		
VOSSLOH-SCHWABE	DMC128***F		19.0	19.0	1.0	15.8	0.10		

ILLUSTRATION OF P/N 180414-1113 HOLDER MATED WITH LED



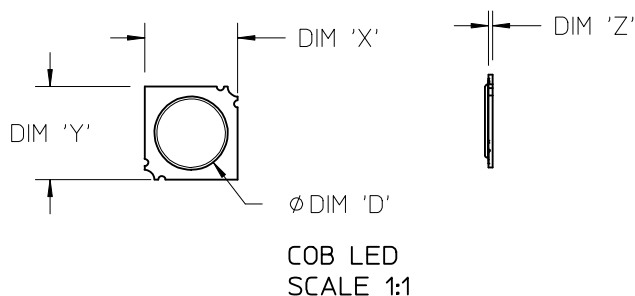
ENTER DESCRIPTION EC NO: SSL2017-0024 DRWNL:ZAB.JANOVSKI 2017/02/21 CHKD: APPR:BPISZCZOR 2017/03/07 B4	QUALITY SYMBOLS 	GENERAL TOLERANCES (UNLESS SPECIFIED)		DIMENSION STYLE MM ONLY		SCALE 2:1	DESIGN UNITS METRIC	THIRD ANGLE PROJECTION		
		4 PLACES ± --- ± ---	mm INCH	DRAWN BY MCOLE	DATE 2013/12/09	TITLE COB LED HOLDER ASSEMBLY 19.0 MM X 19.0 MM SQUARE				
		3 PLACES ± --- ± ---		CHECKED BY MCOLE	DATE 2013/12/09					
		2 PLACES ± 0.13 ± ---		APPROVED BY DMCGOWAN	DATE 2013/12/09					
1 PLACE ± 0.25 ± ---		ANGULAR ±1/2°		MATERIAL NO. SEE CHART	DOCUMENT NO. SD-180414-113					
0 PLACE ± --- ± ---		DRAFT WHERE APPLICABLE MUST REMAIN WITHIN DIMENSIONS		THIS DRAWING CONTAINS INFORMATION THAT IS PROPRIETARY TO MOLEX INCORPORATED AND SHOULD NOT BE USED WITHOUT WRITTEN PERMISSION						

ILLUSTRATION OF P/N 180414-2113 HOLDER MATED WITH LED



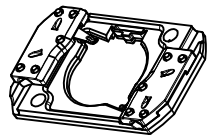
ENTER DESCRIPTION EC NO: SSL2017-0024 DRWNL:ZAB.JANOVSKI 2017/02/21 CHKD: APPR:BPISZCZOR 2017/03/07 REV B4	QUALITY SYMBOLS	GENERAL TOLERANCES (UNLESS SPECIFIED)	DIMENSION STYLE	SCALE	DESIGN UNITS	THIRD ANGLE PROJECTION	
	$\nabla = 0$ $\nabla = 0$ $\nabla = 0$	mm INCH 4 PLACES ± --- ± --- 3 PLACES ± --- ± --- 2 PLACES ± 0.13 ± --- 1 PLACE ± 0.25 ± --- 0 PLACE ± --- ± ---	MM ONLY	2:1	METRIC	DRAWN BY DATE MCOLE 2013/12/09 CHECKED BY DATE MCOLE 2013/12/09 APPROVED BY DATE DMCGOWAN 2013/12/09	TITLE COB LED HOLDER ASSEMBLY 19.0 MM X 19.0 MM SQUARE
		ANGULAR ±1/2°	MATERIAL NO.	DOCUMENT NO.	SHEET NO.		
	DRAFT WHERE APPLICABLE MUST REMAIN WITHIN DIMENSIONS	SEE CHART	SD-180414-113	5 OF 6			

COB MFG	TYPE	DIM 'X'	DIM 'Y'	DIM 'Z'	DIM 'D'	OFFSET
CITIZEN	CLL030, CLL032, CLU034, CLU036, CLU038	19.0	19.0	0.90	17.0	0.15
SEOUL	ZC12, ZC18	19.0	19.0	0.90	16.0	0.15
TRIDONIC	SLE G5 LES15	19.0	19.0	0.90	15.0	0.15
CITIZEN	CLU720, CLU721	19.0	19.0	0.90	13.5	0.15
EVERLIGHT	EAHP1919WA*, EAHP1919WB*, EAHP1919WC*	19.0	19.0	0.90	15.5	0.15
EVERLIGHT	EA1919 36V/16W	19.0	19.0	0.90	15.5	0.15
EVERLIGHT	EA1919 36V/19W	19.0	19.0	0.90	15.5	0.15
EVERLIGHT	EA1919 36V/26W	19.0	19.0	0.90	15.5	0.15
VOSSLOH-SCHWABE	DMC114C	19.0	19.0	1.00	11.9	0.25
VOSSLOH-SCHWABE	DMC124***F, DMC125***F	19.0	19.0	1.00	13.1	0.25
VOSSLOH-SCHWABE	DMC125C	19.0	19.0	1.00	13.1	0.25
VOSSLOH-SCHWABE	DMC128***F	19.0	19.0	1.00	15.8	0.25
BRIDGELUX	H15	19.0	19.0	1.10	16.5	0.35



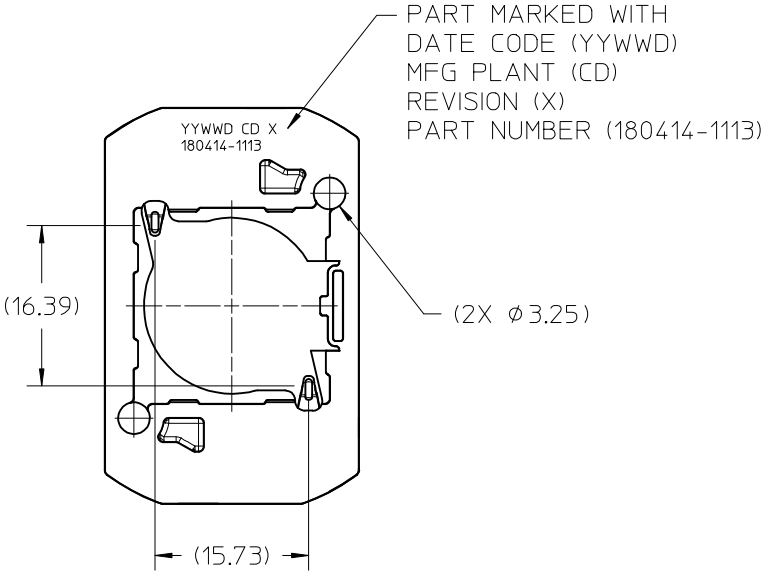
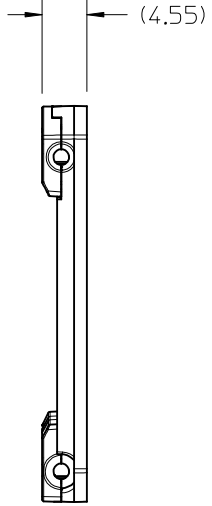
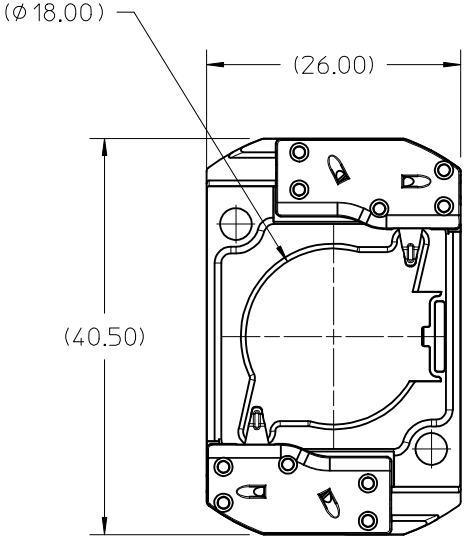
ENTER DESCRIPTION EC NO: SSL2017-0024 DRWNL:ZAB.JANOVSKI 2017/02/21 CHKD: APPR:BP1SZCZOR 2017/03/07 REV	QUALITY SYMBOLS =0 =0	GENERAL TOLERANCES (UNLESS SPECIFIED)	DIMENSION STYLE MM ONLY	SCALE 2:1	DESIGN UNITS METRIC	THIRD ANGLE PROJECTION																														
		<table border="1"> <thead> <tr> <th></th> <th>mm</th> <th>INCH</th> </tr> </thead> <tbody> <tr> <td>4 PLACES</td> <td>± ---</td> <td>± ---</td> </tr> <tr> <td>3 PLACES</td> <td>± ---</td> <td>± ---</td> </tr> <tr> <td>2 PLACES</td> <td>± 0.13</td> <td>± ---</td> </tr> <tr> <td>1 PLACE</td> <td>± 0.25</td> <td>± ---</td> </tr> <tr> <td>0 PLACE</td> <td>± ---</td> <td>± ---</td> </tr> </tbody> </table>		mm	INCH	4 PLACES	± ---	± ---	3 PLACES	± ---	± ---	2 PLACES	± 0.13	± ---	1 PLACE	± 0.25	± ---	0 PLACE	± ---	± ---	<table border="1"> <thead> <tr> <th>DRAWN BY</th> <th>DATE</th> </tr> </thead> <tbody> <tr> <td>MCOLE</td> <td>2013/12/09</td> </tr> <tr> <th>CHECKED BY</th> <th>DATE</th> </tr> <tr> <td>MCOLE</td> <td>2013/12/09</td> </tr> <tr> <th>APPROVED BY</th> <th>DATE</th> </tr> <tr> <td>DMCGOWAN</td> <td>2013/12/09</td> </tr> </tbody> </table>	DRAWN BY	DATE	MCOLE	2013/12/09	CHECKED BY	DATE	MCOLE	2013/12/09	APPROVED BY	DATE	DMCGOWAN	2013/12/09	TITLE COB LED HOLDER ASSEMBLY 19.0 MM X 19.0 MM SQUARE		
		mm	INCH																																	
	4 PLACES	± ---	± ---																																	
	3 PLACES	± ---	± ---																																	
2 PLACES	± 0.13	± ---																																		
1 PLACE	± 0.25	± ---																																		
0 PLACE	± ---	± ---																																		
DRAWN BY	DATE																																			
MCOLE	2013/12/09																																			
CHECKED BY	DATE																																			
MCOLE	2013/12/09																																			
APPROVED BY	DATE																																			
DMCGOWAN	2013/12/09																																			
ANGULAR ±1/2° DRAFT WHERE APPLICABLE MUST REMAIN WITHIN DIMENSIONS	MATERIAL NO. SEE CHART	DOCUMENT NO. SD-180414-113	SHEET NO. 6 OF 6																																	
SIZE B	THIS DRAWING CONTAINS INFORMATION THAT IS PROPRIETARY TO MOLEX INCORPORATED AND SHOULD NOT BE USED WITHOUT WRITTEN PERMISSION																																			

10	9	8	7	6	5	4	3	2	1	
PART NUMBER	DESCRIPTION		POCKET DEPTH	HOUSING	TERMINAL	CAP				
180414-1113	COB LED HOLDER ASSEMBLY		0.90	180413-1113	180155-0133	180154-0105				
180414-2113	COB LED HOLDER ASSEMBLY		0.75	180413-2113	180155-0133	180154-0105				



ISO VIEW 1
SCALE 1:1

P/N 180414-1113 HOLDER ASSEMBLY
(0.90 POCKET DEPTH)



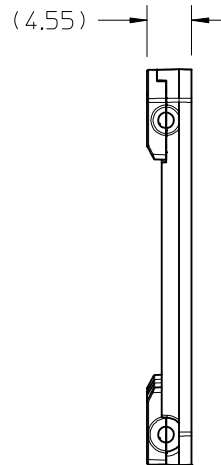
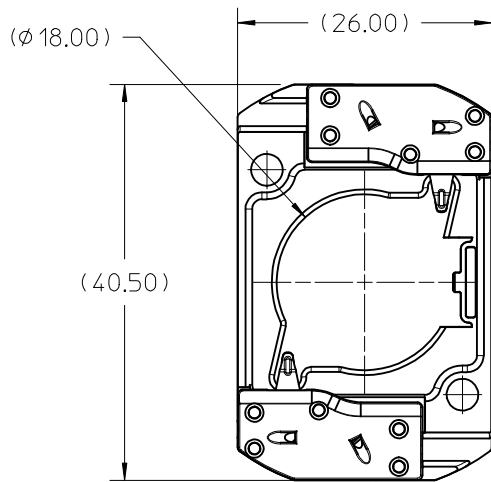
PART MARKED WITH
DATE CODE (YYWWD)
MFG PLANT (CD)
REVISION (X)
PART NUMBER (180414-1113)

- NOTES:
1. MATERIALS: HOUSING AND CAPS: POLYESTER PBT GLASS FILLED; COLOR: WHITE; TERMINAL: COPPER ALLOY
 2. FINISHES: TERMINAL CONTACT: SELECT GOLD OVER NICKEL WIRE TRAP: SELECT TIN OVER NICKEL
 3. PRODUCT SPECIFICATION: 180414-0000-PS
 4. PACKAGING SPECIFICATION: PK-180419-006
 5. UL:OLFB2 UL496 FILE NO. E345583
 6. ELV AND ROHS COMPLIANT
 7. FOR USE WITH: 19.0 MM X 19.0 MM COB LED
 8. WIRE GAUGE: 18, 20, AND 22 AWG, SOLID OR STRANDED WITH TIN OVERCOAT. STRIP LENGTH 10MM +2.0/-0.0MM.
 9. ALL DIMENSIONS IN PARENTHESES (XX.XX) ARE FOR REFERENCE ONLY

ENTER DESCRIPTION EC NO: SSL2017-0024 DRWN:LZABJANOVSKI 2017/02/21 CHKD: APPR:BPISZCZOR 2017/03/07 REV B4	QUALITY SYMBOLS	GENERAL TOLERANCES (UNLESS SPECIFIED)	DIMENSION STYLE	SCALE	DESIGN UNITS	THIRD ANGLE PROJECTION
	$\nabla F/0$ $\nabla F/0$ $\nabla F/0$	mm	MM ONLY	2:1	METRIC	COB LED HOLDER ASSEMBLY 19.0 MM X 19.0 MM SQUARE molex
		INCH	DRAWN BY	DATE	TITLE	
		4 PLACES ± --- ± --- 3 PLACES ± --- ± --- 2 PLACES ± 0.13 ± --- 1 PLACE ± 0.25 ± --- 0 PLACE ± --- ± --- ANGULAR ± 1/2°	MCOLE 2013/12/09 CHECKED BY DATE MCOLE 2013/12/09 APPROVED BY DATE DMCGOWAN 2013/12/09	SD-180414-113 DOCUMENT NO.	SHEET NO.	
DRAFT WHERE APPLICABLE MUST REMAIN WITHIN DIMENSIONS	SIZE B	SEE CHART		THIS DRAWING CONTAINS INFORMATION THAT IS PROPRIETARY TO MOLEX INCORPORATED AND SHOULD NOT BE USED WITHOUT WRITTEN PERMISSION		

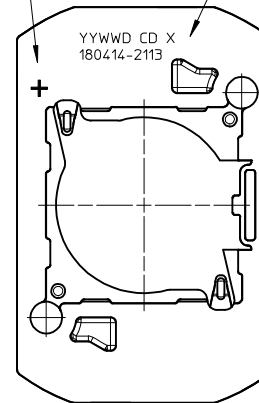
10 9 8 7 6 5 4 3 2 1

P/N 180414-2113 HOLDER ASSEMBLY (0.75 POCKET DEPTH)



PART MARKED WITH
POLARITY SIGN "+"

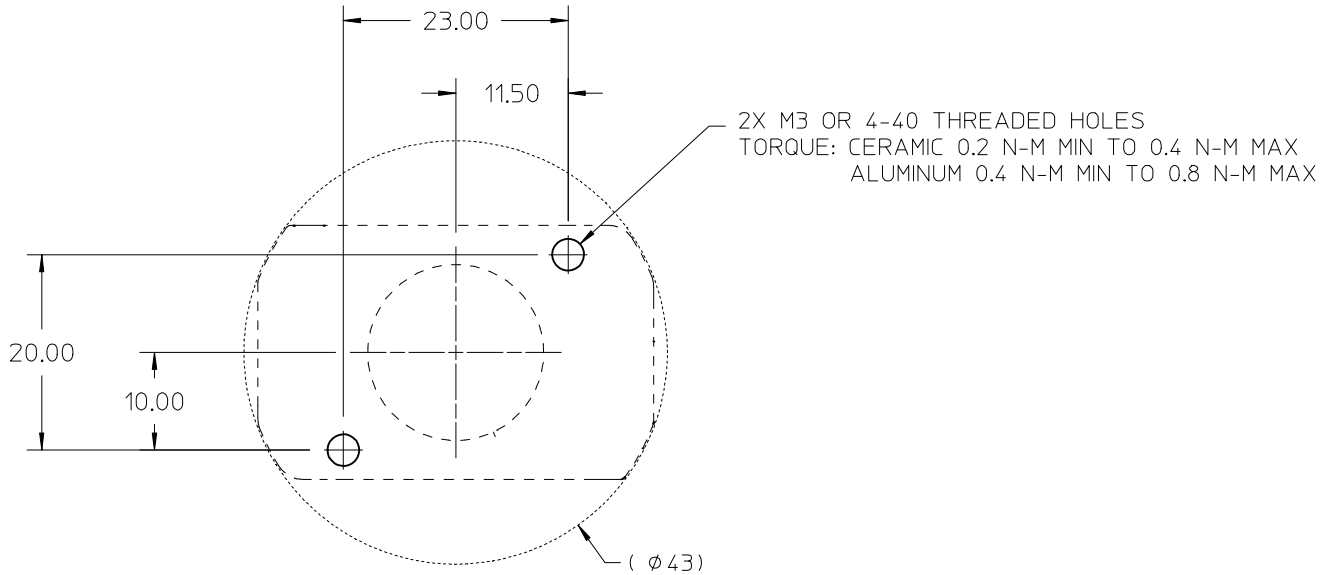
PART MARKED WITH
DATE CODE (YYWWD)
MFG PLANT (CD)
REVISION (X)
PART NUMBER (180414-2113)



ENTER DESCRIPTION EC NO: SSL2017-0024 DRWNL: ZAB.JANOVSKI 2017/02/21 CHKD: APPR: BPT/SZOR 2017/03/07 REV	QUALITY SYMBOLS	GENERAL TOLERANCES (UNLESS SPECIFIED)		DIMENSION STYLE MM ONLY		SCALE 2:1	DESIGN UNITS METRIC	THIRD ANGLE PROJECTION		
	$\nabla = 0$ $\nabla = 0$ $\nabla = 0$		mm	INCH	DRAWN BY	DATE	TITLE COB LED HOLDER ASSEMBLY 19.0 MM X 19.0 MM SQUARE			
		4 PLACES	± ---	± ---	MCOLE	2013/12/09				
		3 PLACES	± ---	± ---	CHECKED BY	DATE				
		2 PLACES	± 0.13	± ---	MCOLE	2013/12/09				
	1 PLACE	± 0.25	± ---	APPROVED BY	DATE	DOCUMENT NO. SD-180414-113				
	0 PLACE	± ---	± ---	DMCGOWAN	2013/12/09					
		ANGULAR ± 1/2°		MATERIAL NO.		SHEET NO. 2 OF 6				
		DRAFT WHERE APPLICABLE MUST REMAIN WITHIN DIMENSIONS		SEE CHART						
		THIS DRAWING CONTAINS INFORMATION THAT IS PROPRIETARY TO MOLEX INCORPORATED AND SHOULD NOT BE USED WITHOUT WRITTEN PERMISSION								

9 8 7 6 5 4 3 2 1

10 9 8 7 6 5 4 3 2 1



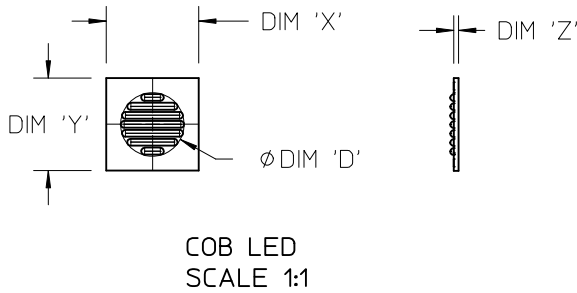
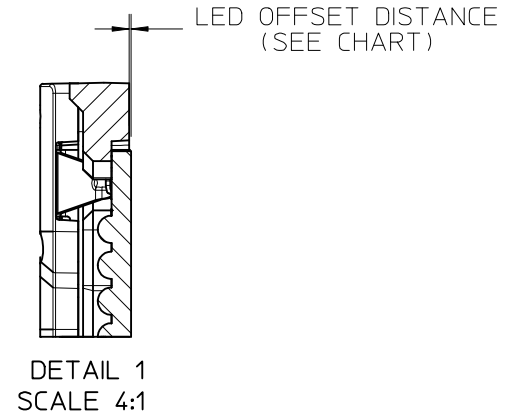
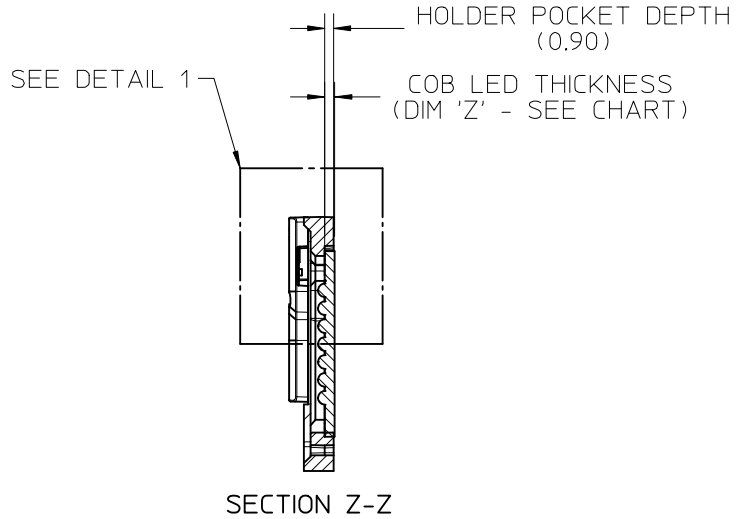
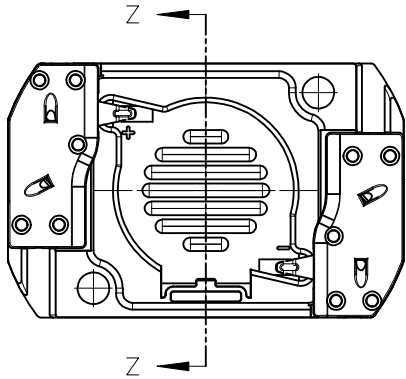
RECOMMENDED MOUNTING DIMENSIONS

ENTER DESCRIPTION EC NO: SSL2017-0024 DRWNL:ZAB.JANOVSKI 2017/02/21 CHKD: APPR:BPISZCZOR 2017/03/07	QUALITY SYMBOLS $\nabla = 0$ $\nabla = 0$ $\nabla = 0$	GENERAL TOLERANCES (UNLESS SPECIFIED)		DIMENSION STYLE MM ONLY		SCALE 2:1	DESIGN UNITS METRIC	THIRD ANGLE PROJECTION			
		4 PLACES \pm --- \pm ---	mm INCH	DRAWN BY MCOLE	DATE 2013/12/09	TITLE COB LED HOLDER ASSEMBLY 19.0 MM X 19.0 MM SQUARE					
		3 PLACES \pm --- \pm ---	2 PLACES ± 0.13 \pm ---	CHECKED BY MCOLE	DATE 2013/12/09						
		1 PLACE ± 0.25 \pm ---	0 PLACE \pm --- \pm ---	APPROVED BY DMCGOWAN	DATE 2013/12/09	MATERIAL NO. SEE CHART					
ANGULAR $\pm 1/2^\circ$		DRAFT WHERE APPLICABLE MUST REMAIN WITHIN DIMENSIONS		DOCUMENT NO. SD-180414-113	SHEET NO. 3 OF 6						
B4	REV	THIS DRAWING CONTAINS INFORMATION THAT IS PROPRIETARY TO MOLEX INCORPORATED AND SHOULD NOT BE USED WITHOUT WRITTEN PERMISSION									

9 8 7 6 5 4 3 2 1

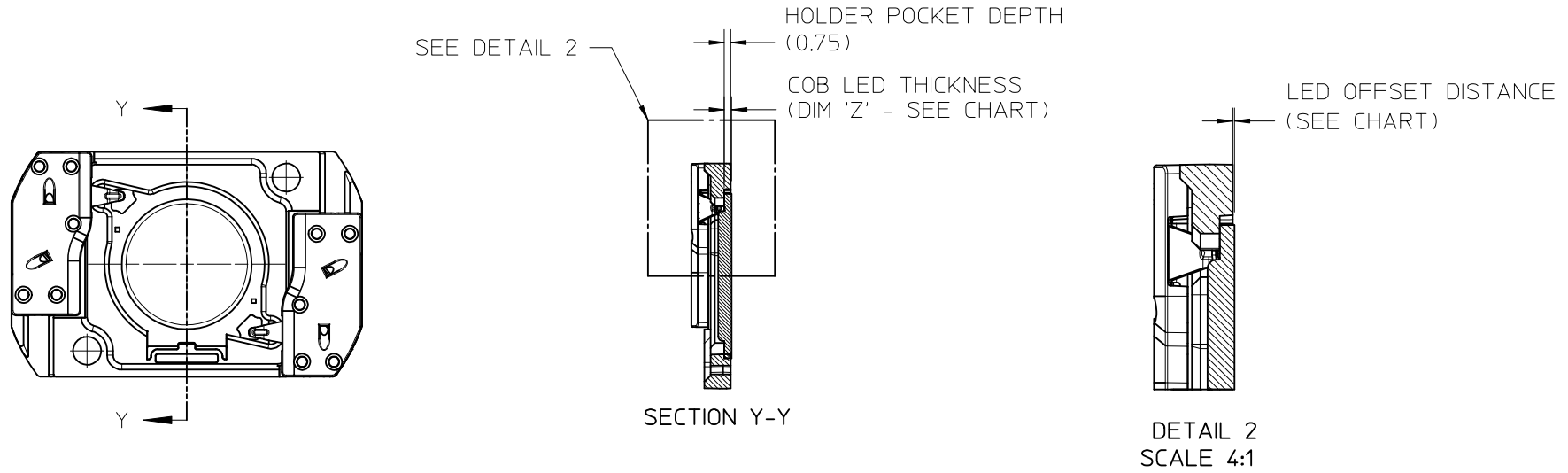
10	9	8	7	6	5	4	3	2	1
COB MFG	TYPE		DIM 'X'	DIM 'Y'	DIM 'Z'	DIM 'D'	OFFSET		
VOSSLOH-SCHWABE	DMC114C		19.0	19.0	1.0	11.9	0.10		
VOSSLOH-SCHWABE	DMC124***F, DMC125***F		19.0	19.0	1.0	13.1	0.10		
VOSSLOH-SCHWABE	DMC125C		19.0	19.0	1.0	13.1	0.10		
VOSSLOH-SCHWABE	DMC128***F		19.0	19.0	1.0	15.8	0.10		

ILLUSTRATION OF P/N 180414-1113 HOLDER MATED WITH LED



ENTER DESCRIPTION EC NO: SSL2017-0024 DRWNL:ZAB.JANOVSKI 2017/02/21 CHKD: APPR:BPISZCZOR 2017/03/07 B4	QUALITY SYMBOLS 	GENERAL TOLERANCES (UNLESS SPECIFIED)		DIMENSION STYLE MM ONLY		SCALE 2:1	DESIGN UNITS METRIC	THIRD ANGLE PROJECTION		
				DRAWN BY MCOLE	DATE 2013/12/09	TITLE COB LED HOLDER ASSEMBLY 19.0 MM X 19.0 MM SQUARE				
				CHECKED BY MCOLE	DATE 2013/12/09					
				APPROVED BY DMCGOWAN	DATE 2013/12/09	MATERIAL NO. SEE CHART		DOCUMENT NO. SD-180414-113		SHEET NO. 4 OF 6
		ANGULAR $\pm 1/2^\circ$ DRAFT WHERE APPLICABLE MUST REMAIN WITHIN DIMENSIONS		THIS DRAWING CONTAINS INFORMATION THAT IS PROPRIETARY TO MOLEX INCORPORATED AND SHOULD NOT BE USED WITHOUT WRITTEN PERMISSION						

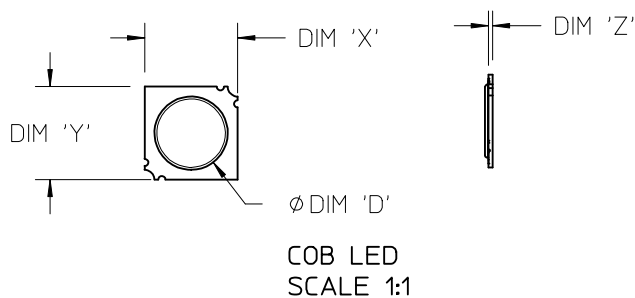
ILLUSTRATION OF P/N 180414-2113 HOLDER MATED WITH LED



ENTER DESCRIPTION EC NO: SSL2017-0024 DRWNL:ZAB.JANOVSKI 2017/02/21 CHKD: APPR:BPISZCZOR 2017/03/07 REV B4	QUALITY SYMBOLS	GENERAL TOLERANCES (UNLESS SPECIFIED)	DIMENSION STYLE	SCALE	DESIGN UNITS	THIRD ANGLE PROJECTION	
	$\nabla = 0$ $\nabla = 0$ $\nabla = 0$	mm INCH 4 PLACES ± --- ± --- 3 PLACES ± --- ± --- 2 PLACES ± 0.13 ± --- 1 PLACE ± 0.25 ± --- 0 PLACE ± --- ± ---	MM ONLY	2:1	METRIC	DRAWN BY DATE MCOLE 2013/12/09 CHECKED BY DATE MCOLE 2013/12/09 APPROVED BY DATE DMCGOWAN 2013/12/09	TITLE COB LED HOLDER ASSEMBLY 19.0 MM X 19.0 MM SQUARE
		ANGULAR ±1/2°	MATERIAL NO.	DOCUMENT NO.	SHEET NO.		
	DRAFT WHERE APPLICABLE MUST REMAIN WITHIN DIMENSIONS	SEE CHART	SD-180414-113	5 OF 6			

THIS DRAWING CONTAINS INFORMATION THAT IS PROPRIETARY TO MOLEX INCORPORATED AND SHOULD NOT BE USED WITHOUT WRITTEN PERMISSION

COB MFG	TYPE	DIM 'X'	DIM 'Y'	DIM 'Z'	DIM 'D'	OFFSET
CITIZEN	CLL030, CLL032, CLU034, CLU036, CLU038	19.0	19.0	0.90	17.0	0.15
SEOUL	ZC12, ZC18	19.0	19.0	0.90	16.0	0.15
TRIDONIC	SLE G5 LES15	19.0	19.0	0.90	15.0	0.15
CITIZEN	CLU720, CLU721	19.0	19.0	0.90	13.5	0.15
EVERLIGHT	EAHP1919WA*, EAHP1919WB*, EAHP1919WC*	19.0	19.0	0.90	15.5	0.15
EVERLIGHT	EA1919 36V/16W	19.0	19.0	0.90	15.5	0.15
EVERLIGHT	EA1919 36V/19W	19.0	19.0	0.90	15.5	0.15
EVERLIGHT	EA1919 36V/26W	19.0	19.0	0.90	15.5	0.15
VOSSLOH-SCHWABE	DMC114C	19.0	19.0	1.00	11.9	0.25
VOSSLOH-SCHWABE	DMC124***F, DMC125***F	19.0	19.0	1.00	13.1	0.25
VOSSLOH-SCHWABE	DMC125C	19.0	19.0	1.00	13.1	0.25
VOSSLOH-SCHWABE	DMC128***F	19.0	19.0	1.00	15.8	0.25
BRIDGELUX	H15	19.0	19.0	1.10	16.5	0.35



ENTER DESCRIPTION EC NO: SSL2017-0024 DRWNL:ZAB.JANOVSKI 2017/02/21 CHKD: APPR:BP1SZCZOR 2017/03/07 REV	QUALITY SYMBOLS	GENERAL TOLERANCES (UNLESS SPECIFIED)		DIMENSION STYLE MM ONLY		SCALE 2:1	DESIGN UNITS METRIC	THIRD ANGLE PROJECTION		
	▼=0 ▽=0	4 PLACES	mm	INCH	DRAWN BY	DATE	TITLE COB LED HOLDER ASSEMBLY 19.0 MM X 19.0 MM SQUARE			
		3 PLACES	± ---	± ---	MCOLE	2013/12/09				
		2 PLACES	± 0.13	± ---	CHECKED BY	DATE	molex DOCUMENT NO. SD-180414-113 SHEET NO. 6 OF 6			
		1 PLACE	± 0.25	± ---	MCOLE	2013/12/09				
0 PLACE		± ---	± ---	APPROVED BY	DATE					
				DMCGOWAN	2013/12/09					
B4		ANGULAR ±1/2°		MATERIAL NO.						
		DRAFT WHERE APPLICABLE MUST REMAIN WITHIN DIMENSIONS		SEE CHART						
				SIZE B	THIS DRAWING CONTAINS INFORMATION THAT IS PROPRIETARY TO MOLEX INCORPORATED AND SHOULD NOT BE USED WITHOUT WRITTEN PERMISSION					