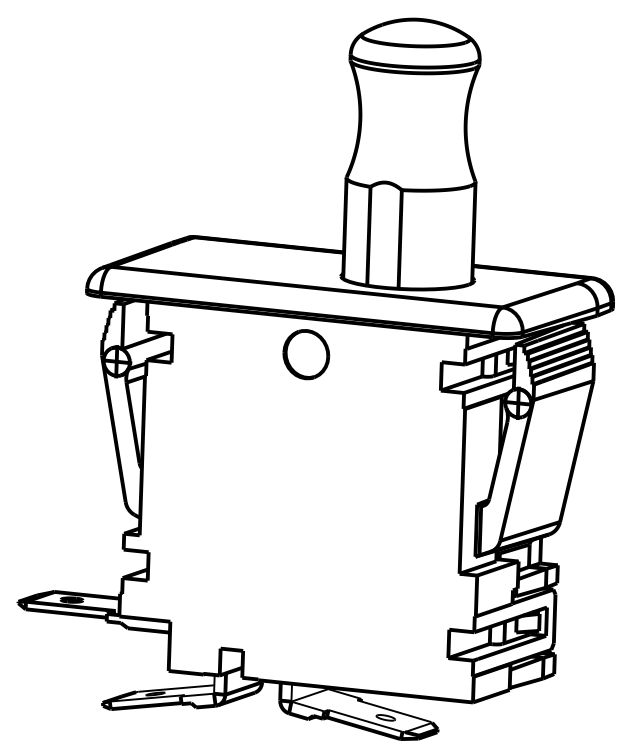
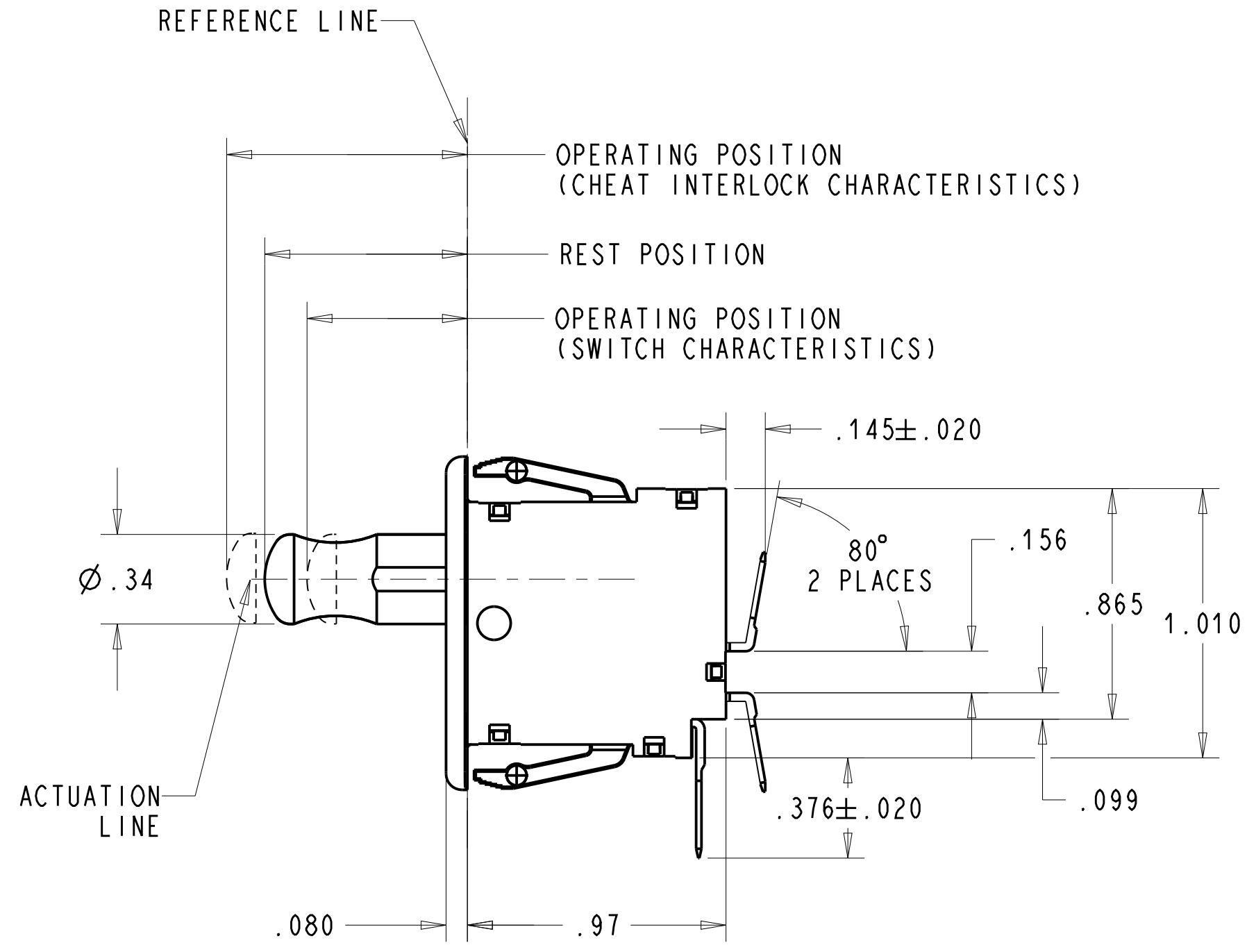
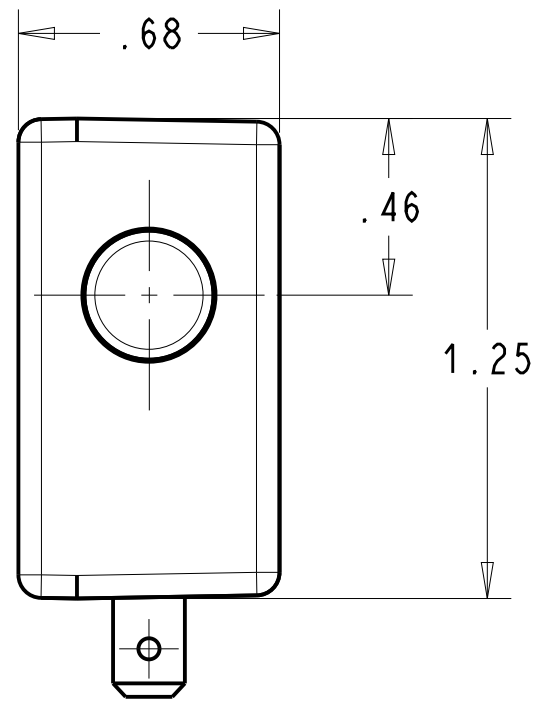
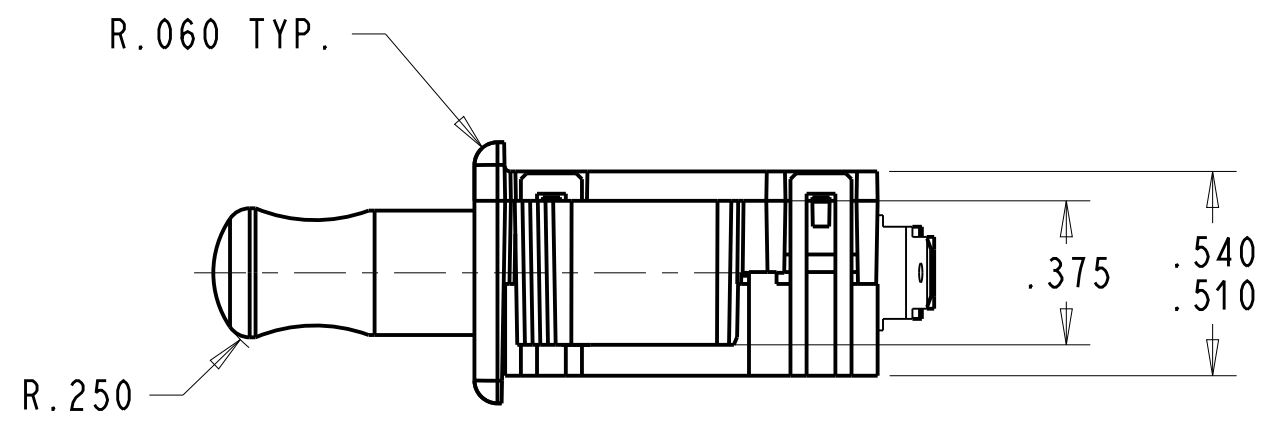


PANEL CUTOUT DETAIL  
RECOMMENDED  
PANEL THICKNESS  
.045-.100



NOTES (UNLESS OTHERWISE SPECIFIED):

1. SWITCH CHARACTERISTICS:

REST POSITION:	.730 TO .790
PRETRAVEL:	.125 MAX.
OPERATING POSITION:	.610 TO .710
OVER-TRAVEL:	.100 MIN.
MOVEMENT DIFF:	.045 MAX.
OPERATING FORCE grams:	425 MAX.

BUTTON POSITION  
AT FULL OVERTRAVEL .520 MAX.

ALL CHARACTERISTICS ARE TAKEN AT THE ACTUATION LINE AND MEASURED FROM THE REFERENCE LINE.

CHEAT INTERLOCK CHARACTERISTICS

REST POSITION:	.730 TO .790
PRETRAVEL:	.125 MAX.
OPERATING POSITION:	.800 TO .900
OVER-TRAVEL:	.050 MIN.
MOVEMENT DIFF:	.060 MAX.
FULL OVERTRAVEL:	.980 MAX.
OPERATING FORCE grams:	585 MAX.

2. us ELECTRICAL RATING  
10A, 125/250 VAC  
1/3 HP, 125/250 VAC

10(4)A 250V, 50E3, 40T85

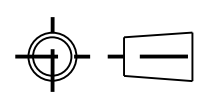
3. TERMINALS:  
ARE .187 WIDTH x .020 THICKNESS.

4. -RECOGNIZED TO U.S. AND CANADIAN REQUIREMENTS  
UNDER THE COMPONENT RECOGNITION PROGRAM OF  
UNDERWRITERS LABORATORIES, INC.

5. TEMPERATURE RATING: -40°C TO +85°C

6. COLORS: FACEPLATE WHITE  
BUTTON WHITE

DWN: J. DOLNIK  
APVD: RC  
DATE: 2016-08-29  
THIRD ANGLE PROJECTION



CONFIDENTIAL AND PROPRIETARY:  
ALL INFORMATION OR INVENTIONS CONTAINED IN THIS  
DOCUMENT OR DERIVED FROM THE INFORMATION THERE  
IN IS OWNED BY ZF ELECTRONIC SYSTEMS, AND IS  
CONFIDENTIAL AND PROPRIETARY. REVIEW OR  
POSSESSION OF THIS DOCUMENT INDICATES AGREEMENT  
THAT SUCH INFORMATION AND INVENTIONS WILL NOT BE  
DISCLOSED, REPRODUCED OR OTHERWISE USED IN ANY  
WAY WITHOUT EXPRESS WRITTEN PERMISSION FROM AN  
AUTHORIZED REPRESENTATIVE OF ZF ELECTRONIC  
SYSTEMS.



11200 88th AVE. PLEASANT PRAIRIE, WI 53158  
NAME / DESCRIPTION

SPECIFICATION DRAWING

C	Z000375239	29-Aug-16	JPD	ELL	PROJECT/ CSR
REV	ECO NO.	DATE	PREP	APVD	4000000138

TOLERANCE UNLESS SPECIFIED			
DWG UNITS	X.XX	X.XXX	ANGLES
INCHES	± 0.02	± 0.015	± 5.0 °

C	ITEM NO.	OF69-65A0
SCALE:	2:1	SH 1 OF 1

ORIGINAL ON PRO/E