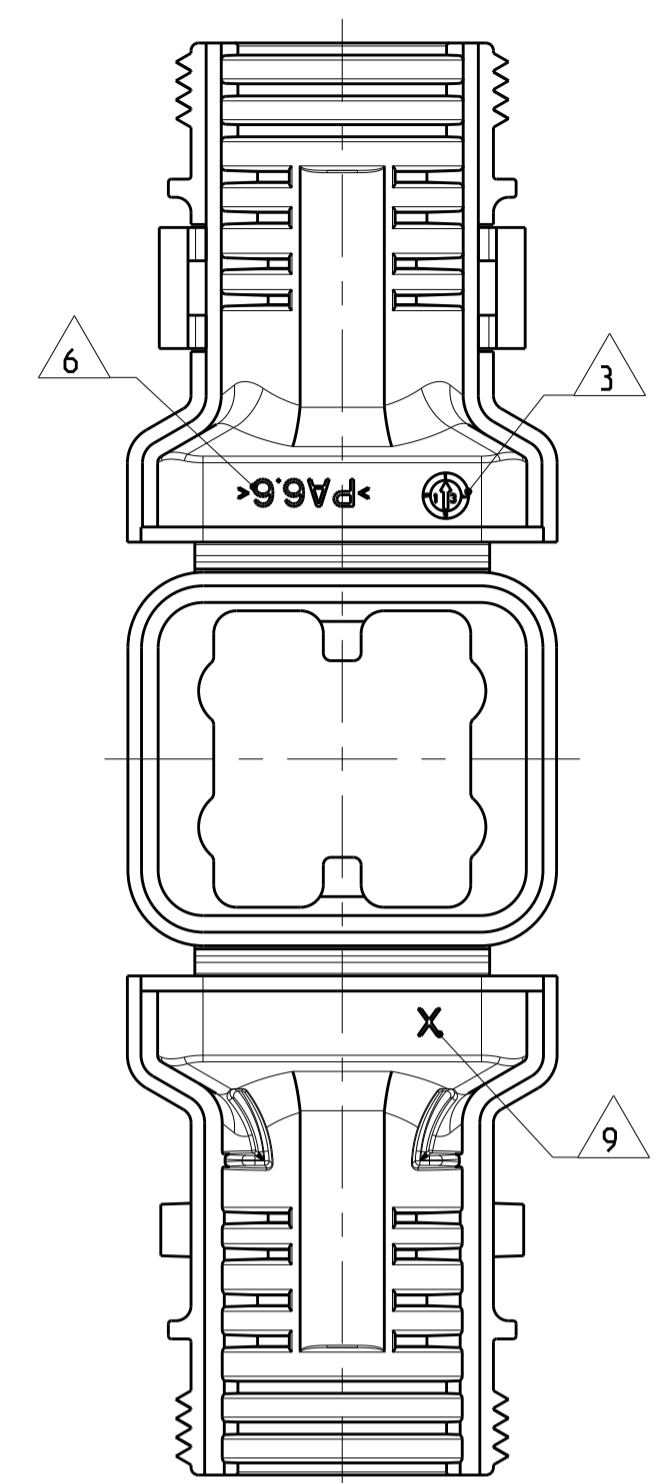
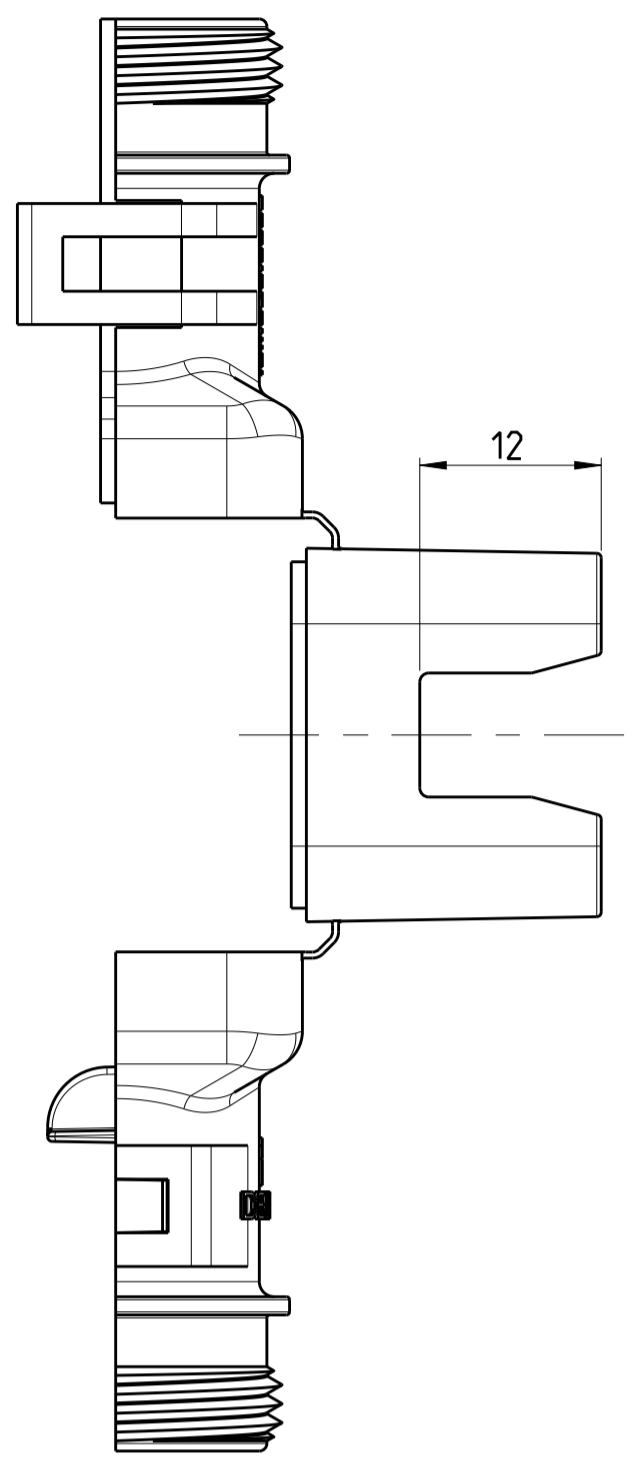
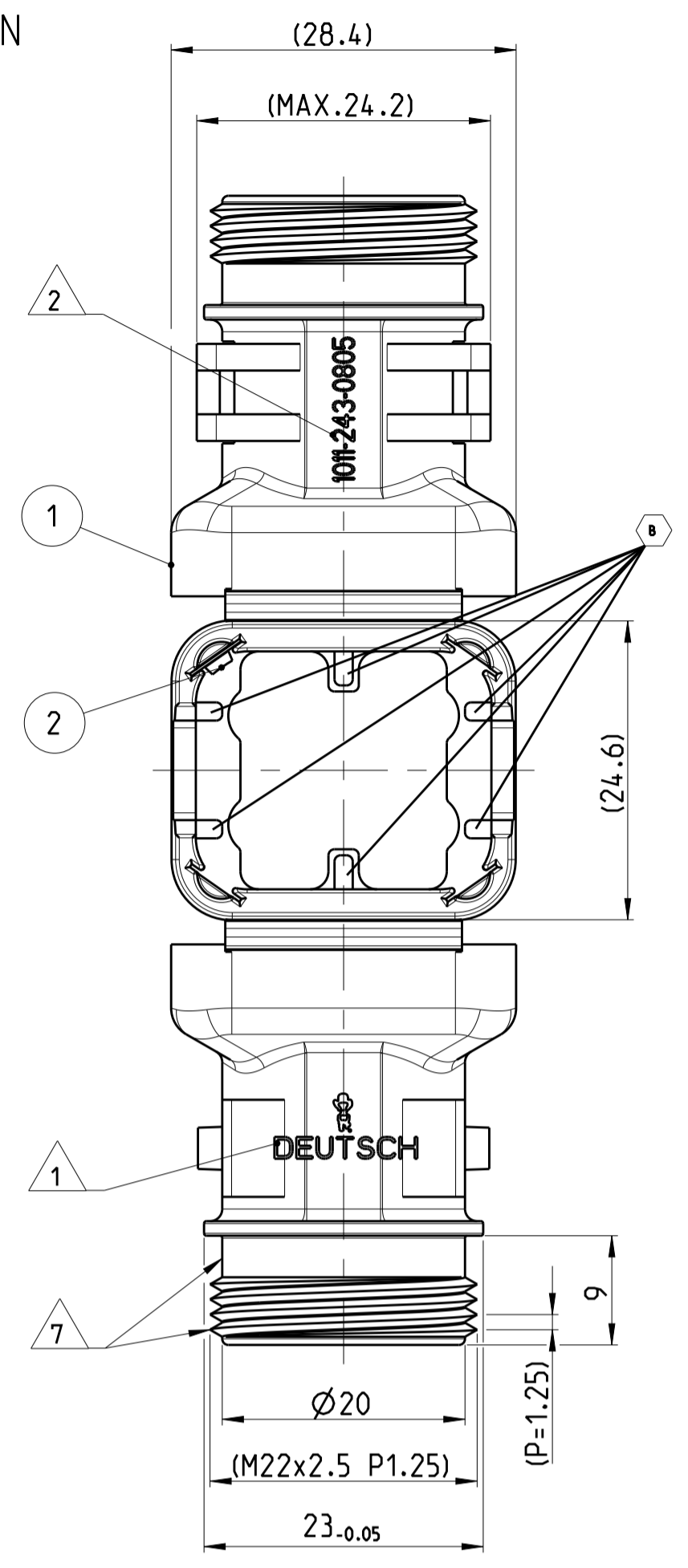


LOC	DIST	REV	DATE	APPV
A1	-	A	08MAR2013	MT CE
		B	02NOV2016	DR CF
		B1	29MAY2018	SM CF
		B2	12JUN2019	MK PV

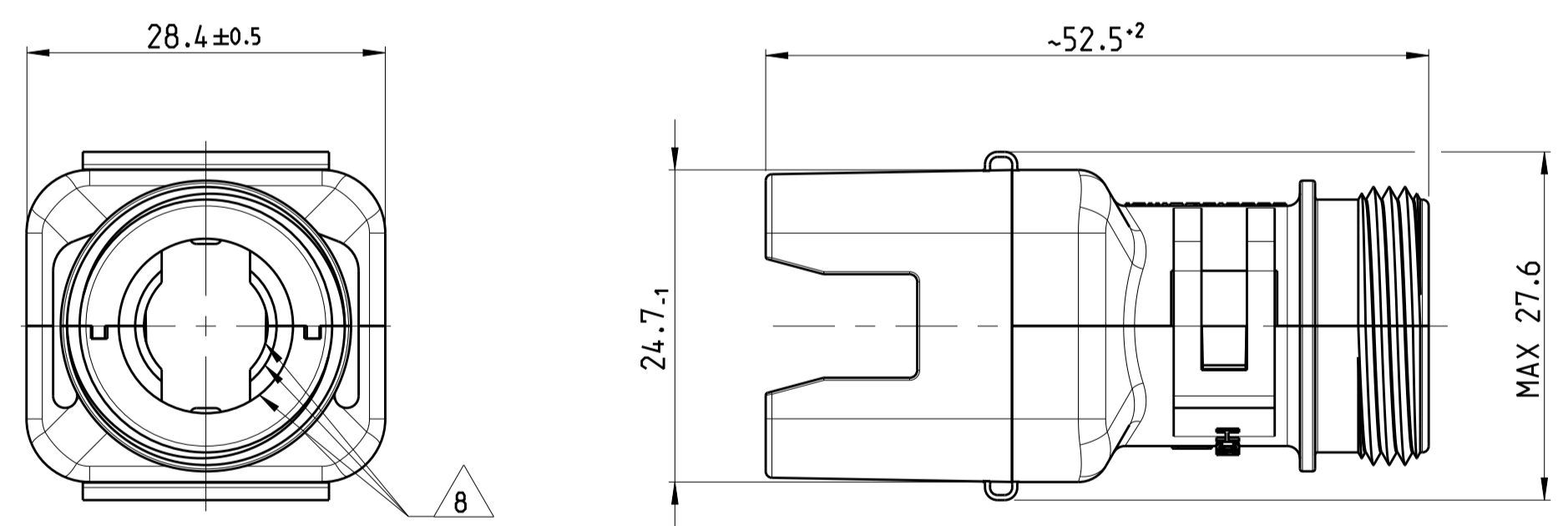
11 DELIVERY CONDITION AS SHOWN
 Lieferzustand wie gezeigt



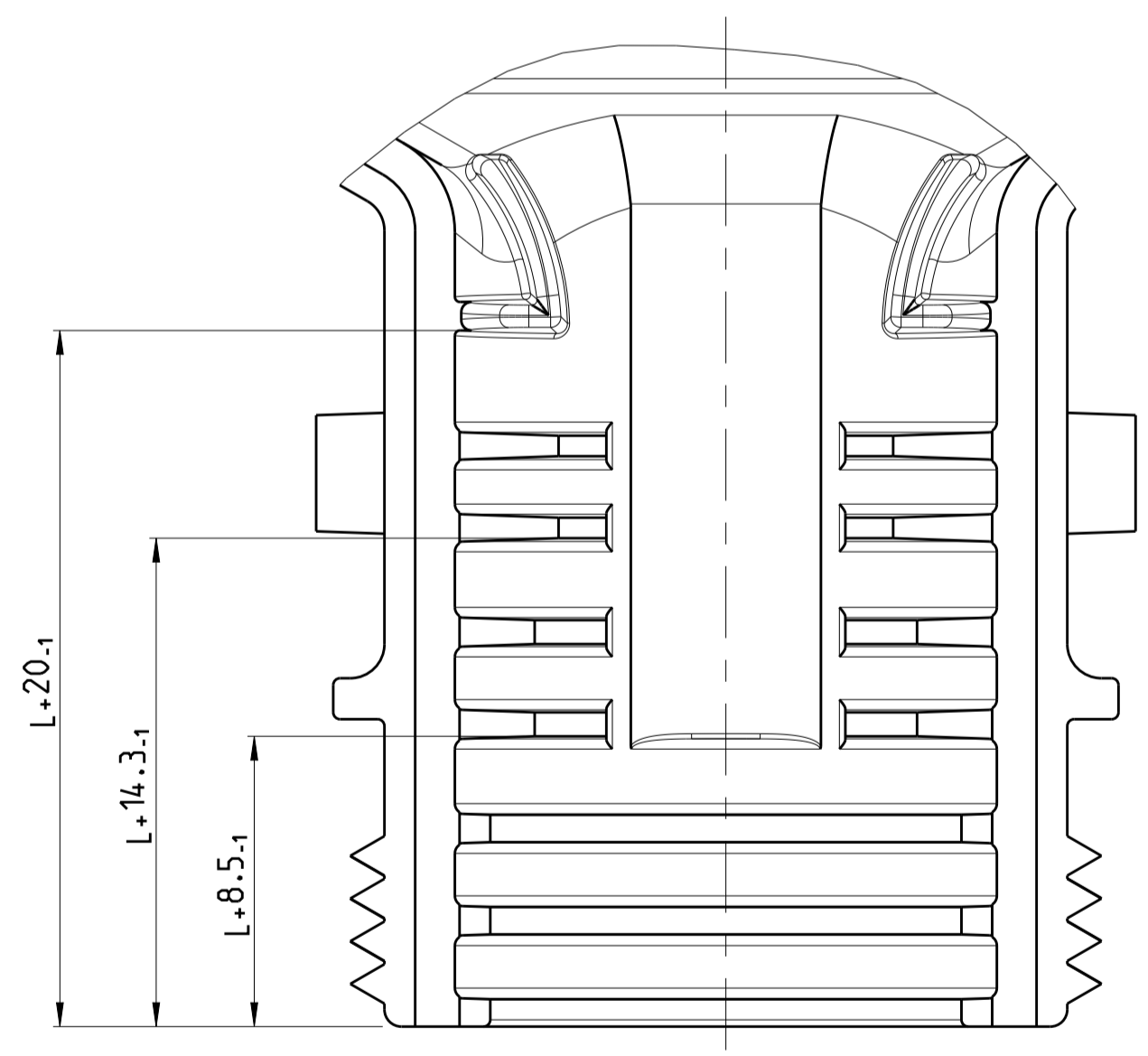
NOTES
 Bemerkungen

- 1 DEUTSCH LOGO
DEUTSCH Logo
- 2 DEUTSCH PART-NO
DEUTSCH Teil-Nr.
- 3 PRODUCTION DATE
Produktionsdatum
- 4 BULK PACKAGING IN CORRUGATED BOX
Schuetztgut im Karton
- 5 MALFUNCTION CAUSED BY LAQUER IS
NOT COVERED BY TE WARRANTY
Funktionsbeeintraechtigung durch Lackieren liegt
nicht im Einfluss und Gewährleistungsumfang von TE
- 6 MATERIAL MARKING ACCORDING TO VDA 260
Werkstoffkennzeichnung nach VDA 260
- 7 FOR HEAT-SHRINK TUBING AND TUBE WITH TIE WRAP
Fuer Schrumpfschlauch und Schlauch mit Kabelschelle
- 8 FOR CORRUGATED TUBES: NW 8.5/10/13
Fuer Wellrohre: NW 8.5/10/13
- 9 MOULD CAVITY MARKING (IF NECESSARY)
Nestmarkierung (falls notwendig)
- 10 MATED WITH ALL MODIFICATION OF DT06-08S
(WITHOUT ANY WELDED / MOUNTED PARTS)
Passend zu allen Varianten von DT06-08S
(ohne verschweißte / montierte Teile)
- 11 BASED ON THE HINGE MECHANISM OF THE CAP,
THE DELIVERY CONDITION CAN BE DIFFERENT
TO THE SHOWN STATUS.
Basierend auf dem Klappmechanismus der Kappe, kann der
Lieferzustand von der dargestellten Ansicht abweichen.

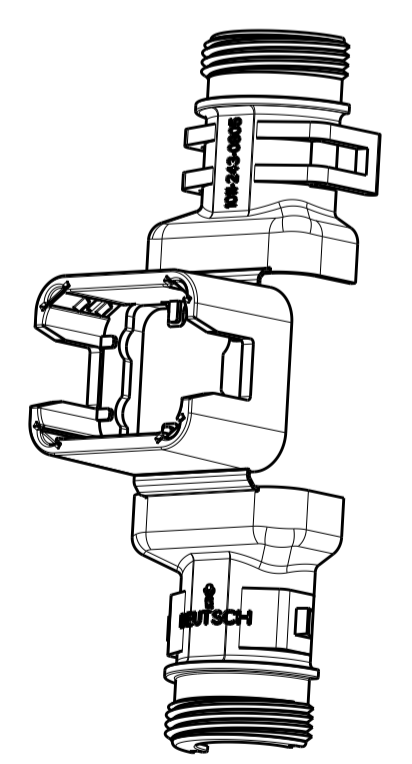
CLOSED (MOUNTED) CONDITION AS SHOWN
 Geschlossener (montierter) Zustand wie gezeigt



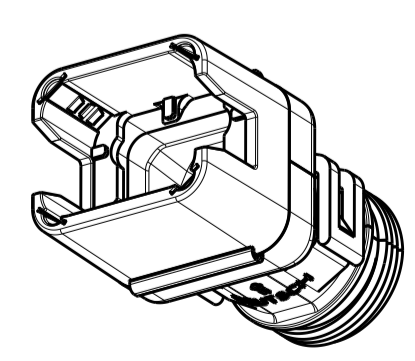
SCALE 5:1
 Maßstab



L+ = ADD LENGTH FOR CORRUGATED TUBE
 zus. Länge des Wellrohres



SCALE 1:1
 Maßstab



SCALE 1:1
 Maßstab

ORDER-NO. Bestell-Nr.	REV.	WEIGHT (g)	POS.	QTY Stück	MATERIAL	COLOUR Farbe	DESCRIPTION Beschreibung	ITEM
1011-243-0805	B	10.81	2	1	STAINLESS STEEL Federblech rostfrei	PLAIN blau	LOCKING SHEET Rastblech	1
			1	1	NYLON 6/6	BLACK schwarz	COVER WITH CABLE FEED Kappe mit Kabelführung	

TOLERANCES UNLESS OTHERWISE SPECIFIED ACC. TO DIN 16901-140 CENTRIC TO NOMINAL DIMENSION, EDITION 1982-11. SHALL APPLY. Freimess toleranzen nach DIN 16901-140. Es gilt die Ausgabe 1982-11.																																																																																																																													
DIESE ZEICHNUNG IST EIN KONTROLLIERTES DOKUMENT. BEMESSUNGEN UND TOLERANZEN GEMAESS GPS (ISO STANDARDS).																																																																																																																													
THIS DRAWING IS A CONTROLLED DOCUMENT. DIMENSIONING AND TOLERANCING PER ASME Y14.5M-2009.																																																																																																																													
DIMENSIONS: MASSENMASSE: mm	TOLERANCES UNLESS OTHERWISE SPECIFIED: ALLE DIMENSIONEN mm																																																																																																																												
<table border="1"> <tr><td>0-PLC</td><td>±</td></tr> <tr><td>1-PLC</td><td>±</td></tr> <tr><td>2-PLC</td><td>±</td></tr> <tr><td>3-PLC</td><td>±</td></tr> <tr><td>4-PLC</td><td>±</td></tr> <tr><td>5-PLC</td><td>±</td></tr> <tr><td>6-PLC</td><td>±</td></tr> <tr><td>7-PLC</td><td>±</td></tr> <tr><td>8-PLC</td><td>±</td></tr> <tr><td>9-PLC</td><td>±</td></tr> <tr><td>10-PLC</td><td>±</td></tr> <tr><td>11-PLC</td><td>±</td></tr> <tr><td>12-PLC</td><td>±</td></tr> <tr><td>13-PLC</td><td>±</td></tr> <tr><td>14-PLC</td><td>±</td></tr> <tr><td>15-PLC</td><td>±</td></tr> <tr><td>16-PLC</td><td>±</td></tr> <tr><td>17-PLC</td><td>±</td></tr> <tr><td>18-PLC</td><td>±</td></tr> <tr><td>19-PLC</td><td>±</td></tr> <tr><td>20-PLC</td><td>±</td></tr> <tr><td>21-PLC</td><td>±</td></tr> <tr><td>22-PLC</td><td>±</td></tr> <tr><td>23-PLC</td><td>±</td></tr> <tr><td>24-PLC</td><td>±</td></tr> <tr><td>25-PLC</td><td>±</td></tr> <tr><td>26-PLC</td><td>±</td></tr> <tr><td>27-PLC</td><td>±</td></tr> <tr><td>28-PLC</td><td>±</td></tr> <tr><td>29-PLC</td><td>±</td></tr> <tr><td>30-PLC</td><td>±</td></tr> </table>	0-PLC	±	1-PLC	±	2-PLC	±	3-PLC	±	4-PLC	±	5-PLC	±	6-PLC	±	7-PLC	±	8-PLC	±	9-PLC	±	10-PLC	±	11-PLC	±	12-PLC	±	13-PLC	±	14-PLC	±	15-PLC	±	16-PLC	±	17-PLC	±	18-PLC	±	19-PLC	±	20-PLC	±	21-PLC	±	22-PLC	±	23-PLC	±	24-PLC	±	25-PLC	±	26-PLC	±	27-PLC	±	28-PLC	±	29-PLC	±	30-PLC	±	<table border="1"> <tr><td>0-PLC</td><td>±</td></tr> <tr><td>1-PLC</td><td>±</td></tr> <tr><td>2-PLC</td><td>±</td></tr> <tr><td>3-PLC</td><td>±</td></tr> <tr><td>4-PLC</td><td>±</td></tr> <tr><td>5-PLC</td><td>±</td></tr> <tr><td>6-PLC</td><td>±</td></tr> <tr><td>7-PLC</td><td>±</td></tr> <tr><td>8-PLC</td><td>±</td></tr> <tr><td>9-PLC</td><td>±</td></tr> <tr><td>10-PLC</td><td>±</td></tr> <tr><td>11-PLC</td><td>±</td></tr> <tr><td>12-PLC</td><td>±</td></tr> <tr><td>13-PLC</td><td>±</td></tr> <tr><td>14-PLC</td><td>±</td></tr> <tr><td>15-PLC</td><td>±</td></tr> <tr><td>16-PLC</td><td>±</td></tr> <tr><td>17-PLC</td><td>±</td></tr> <tr><td>18-PLC</td><td>±</td></tr> <tr><td>19-PLC</td><td>±</td></tr> <tr><td>20-PLC</td><td>±</td></tr> <tr><td>21-PLC</td><td>±</td></tr> <tr><td>22-PLC</td><td>±</td></tr> <tr><td>23-PLC</td><td>±</td></tr> <tr><td>24-PLC</td><td>±</td></tr> <tr><td>25-PLC</td><td>±</td></tr> <tr><td>26-PLC</td><td>±</td></tr> <tr><td>27-PLC</td><td>±</td></tr> <tr><td>28-PLC</td><td>±</td></tr> <tr><td>29-PLC</td><td>±</td></tr> <tr><td>30-PLC</td><td>±</td></tr> </table>	0-PLC	±	1-PLC	±	2-PLC	±	3-PLC	±	4-PLC	±	5-PLC	±	6-PLC	±	7-PLC	±	8-PLC	±	9-PLC	±	10-PLC	±	11-PLC	±	12-PLC	±	13-PLC	±	14-PLC	±	15-PLC	±	16-PLC	±	17-PLC	±	18-PLC	±	19-PLC	±	20-PLC	±	21-PLC	±	22-PLC	±	23-PLC	±	24-PLC	±	25-PLC	±	26-PLC	±	27-PLC	±	28-PLC	±	29-PLC	±	30-PLC	±
0-PLC	±																																																																																																																												
1-PLC	±																																																																																																																												
2-PLC	±																																																																																																																												
3-PLC	±																																																																																																																												
4-PLC	±																																																																																																																												
5-PLC	±																																																																																																																												
6-PLC	±																																																																																																																												
7-PLC	±																																																																																																																												
8-PLC	±																																																																																																																												
9-PLC	±																																																																																																																												
10-PLC	±																																																																																																																												
11-PLC	±																																																																																																																												
12-PLC	±																																																																																																																												
13-PLC	±																																																																																																																												
14-PLC	±																																																																																																																												
15-PLC	±																																																																																																																												
16-PLC	±																																																																																																																												
17-PLC	±																																																																																																																												
18-PLC	±																																																																																																																												
19-PLC	±																																																																																																																												
20-PLC	±																																																																																																																												
21-PLC	±																																																																																																																												
22-PLC	±																																																																																																																												
23-PLC	±																																																																																																																												
24-PLC	±																																																																																																																												
25-PLC	±																																																																																																																												
26-PLC	±																																																																																																																												
27-PLC	±																																																																																																																												
28-PLC	±																																																																																																																												
29-PLC	±																																																																																																																												
30-PLC	±																																																																																																																												
0-PLC	±																																																																																																																												
1-PLC	±																																																																																																																												
2-PLC	±																																																																																																																												
3-PLC	±																																																																																																																												
4-PLC	±																																																																																																																												
5-PLC	±																																																																																																																												
6-PLC	±																																																																																																																												
7-PLC	±																																																																																																																												
8-PLC	±																																																																																																																												
9-PLC	±																																																																																																																												
10-PLC	±																																																																																																																												
11-PLC	±																																																																																																																												
12-PLC	±																																																																																																																												
13-PLC	±																																																																																																																												
14-PLC	±																																																																																																																												
15-PLC	±																																																																																																																												
16-PLC	±																																																																																																																												
17-PLC	±																																																																																																																												
18-PLC	±																																																																																																																												
19-PLC	±																																																																																																																												
20-PLC	±																																																																																																																												
21-PLC	±																																																																																																																												
22-PLC	±																																																																																																																												
23-PLC	±																																																																																																																												
24-PLC	±																																																																																																																												
25-PLC	±																																																																																																																												
26-PLC	±																																																																																																																												
27-PLC	±																																																																																																																												
28-PLC	±																																																																																																																												
29-PLC	±																																																																																																																												
30-PLC	±																																																																																																																												
MATERIAL SEE TABLE siehe Tabelle	WEIGHT GEWICHT SEE TABLE siehe Tabelle																																																																																																																												

STE TE Connectivity

COVER, DT06-08S-BS180. ASSY
 Kappe, DT06-08S-BS180. Assy
 BACKSHELL STRAIGHT (180 DEGREE)

SIZE: 00779
 CAGE CODE: 1011-243-0805
 DRAWING NO: 1011-243-0805-ENV
 SCALE: 2:1
 SHEET: 1 OF 1
 REV: B2