

10139085-AA B C D E G V FF

AA	POSITION	DIMENSION		
		"A"	"B"	"C"
08	2X40	31.2	37.8	36.2
12	2X60	47.2	53.8	52.2

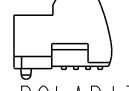

B	HEIGHT
1	SEE SHEET 2
4	SEE SHEET 3


C	PLATING: CONTACT AREA/SOLDER AREA	FF
4	GOLD 0.2um MIN / PURE MATT TIN NICKEL UNDERPLATE OVERALL 1.27um. (LEADFREE PLATING)	LF
5	GOLD 0.38um MIN / MATT PURE TIN NICKEL UNDERPLATE OVERALL 1.27um MIN (LEADFREE PLATING)	LF
6	GOLD FLASH OVER PALLADIUM-NICKEL 0.69um MIN / PURE MATT TIN NICKEL UNDERPLATE OVERALL 1.27um. (LEADFREE PLATING)	LF

V	MANDATORY CODE
/	STANDARD, NOT MANDATORY P/N
T	ONLY FOR DEDICATED CUSTOMER

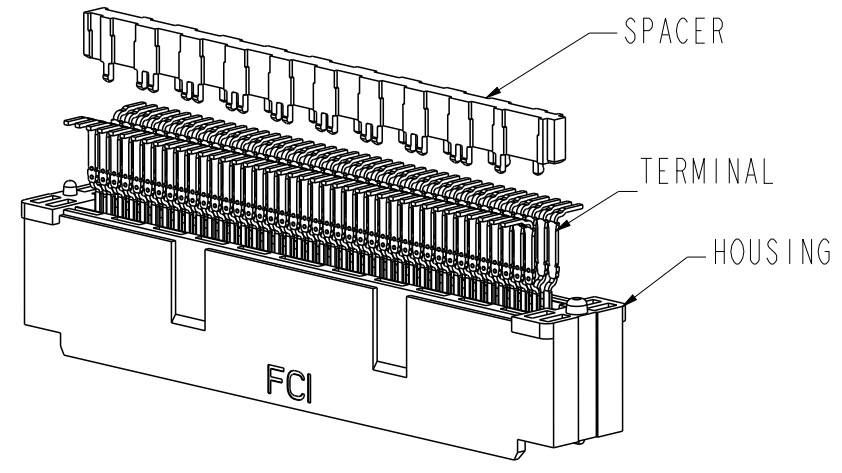
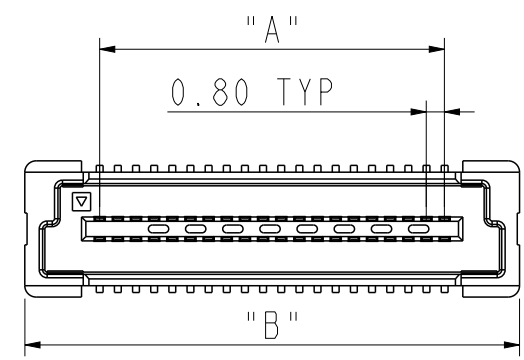
G	DATE CODE
/	NOT PRINT DATE CODE
P	PRINT DATE CODE

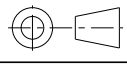
E	PACKING
2	T&R WITH METAL CAP
Q	T&R WITHOUT CAP

D	FEATURE
0	 WITH POLARIZATION PEGS
2	 WITHOUT POLARIZATION PEGS

- NOTE:
- MATERIAL:
HOUSING: LCP, UL94-V0
SPACER: ELECTRICAL LOSSY MATERIAL
TERMINAL: COPPER ALLOY
METAL CAP: STAINLESS STEEL
 - PLATING: AS SHOWN IN TABLE.
 - SEE GS-12-1354 FOR PRODUCT SPEC.
 - PACKAGING OPTION 2: NOT ALL SIZES ARE AVAILABLE. CHECK WITH FACTORY.
 - THIS PRODUCT MEETS THE EUROPEAN UNION DIRECTIVES AND OTHER COUNTRY REGULATIONS AS DESCRIBED IN GS-22-008.
 - THE HOUSING WILL WITHSTAND EXPOSURE UP TO 260° PEAK TEMPERATURE FOR 30 SECONDS IN A CONVECTION, INFRA-RED OR VAPOR PHASE REFLOW OVEN.
 - THE P/N 10139085-***** OR 10139085-*****LF NOT PRINT DATE CODE.
THE P/N 10139085-*****P OR 10139085-*****PLF NEED PRINT DATE CODE.
 -  DIMENSIONS NEED TO MEASURE BY QC
 - THE GROUND PINS RELATE TO DIFFERENTIAL PAIR WILL BE CONNECTED TOGETHER BY SPACER

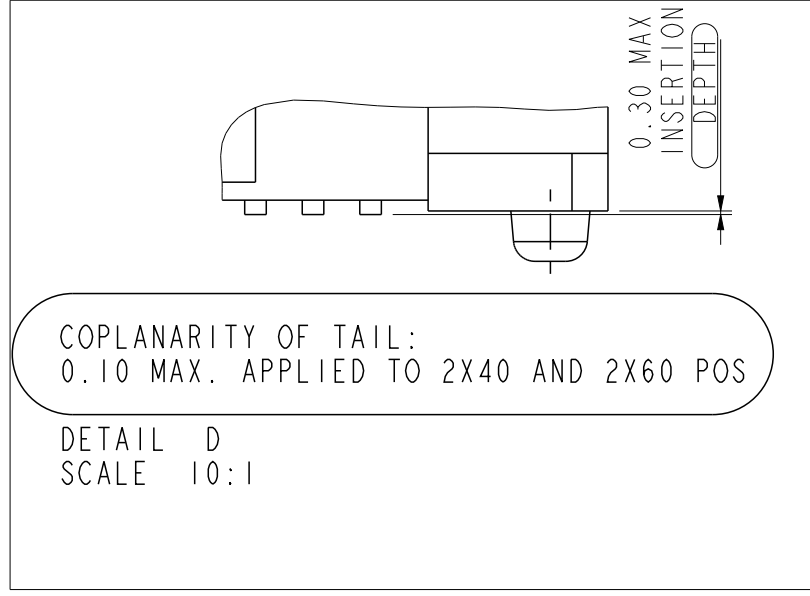
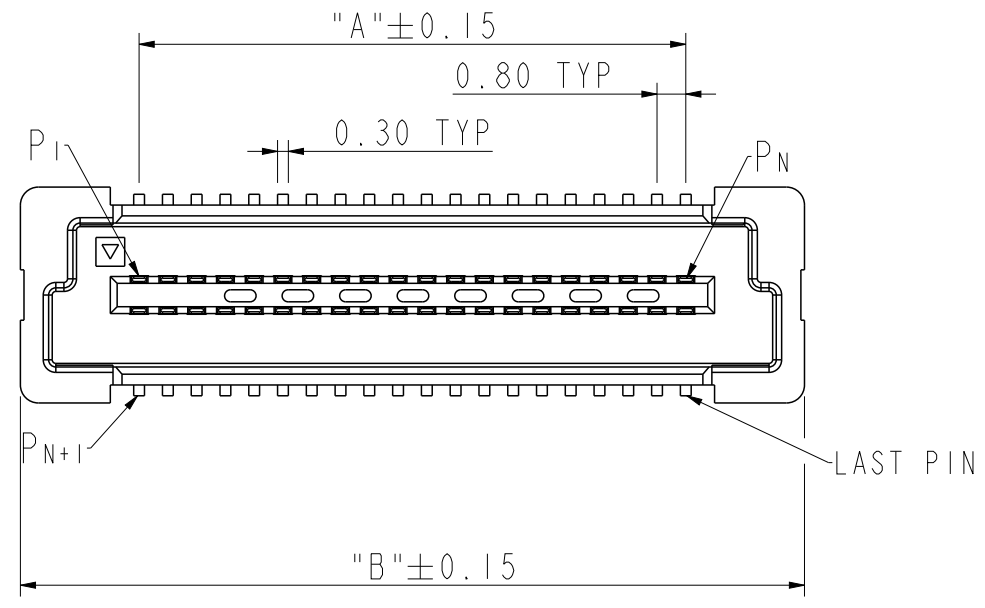
AA	POSITION	THE GROUND PINS RELATE TO DIFFERENTIAL PAIR WILL BE CONNECTED TOGETHER BY SPACER
08	2X40	2 5 6 9 10 13 14 17 18 21 22 25 26 29 30 33 34 37 44 47 48 51 52 55 56 59 60 63 64 67 68 71 72 75 76 79
12	2X60	20 21 24 25 28 29 32 33 36 37 40 41 44 45 48 49 52 53 56 57 60 82 83 86 87 90 91 94 95 98 99 102 103 106 107 110 111 114 115 118 119



spec ref	-	dr	Eric Huang	2016/08/02	projection	mm	size	A3	scale	DRAWING SCALE
tolerance std	ISO 406 ISO 1101	eng	Bob Gu	2018/11/19		← →	ecn no	ELX-N-31112-1		
TOLERANCES UNLESS OTHERWISE SPECIFIED		chr	-	-			rel level	Released		
surface	linear	appr	Tim Yao	2018/11/30	product family	BERGSTAK+ 0.8mm	dwg no	10139085		
ISO 1302	angular	Amphenol FCI		PLUG CONN	cat. no.	Product - Customer Drw	rev	C		
	0.X ±0.3							sheet 1 of 4		
	0.XX ±0.15									
	0.XXX ±0.08									
	0° ±2°									

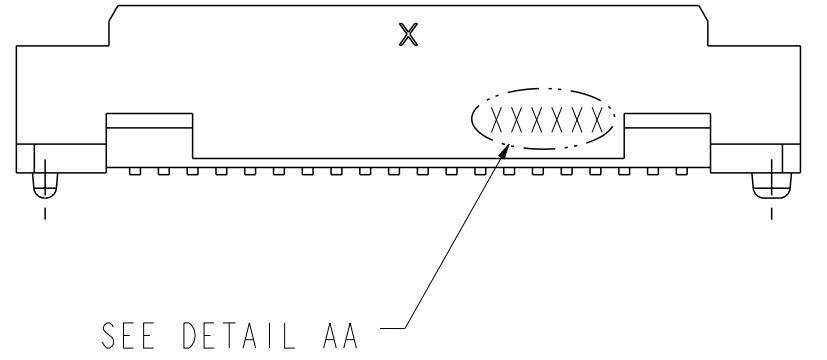
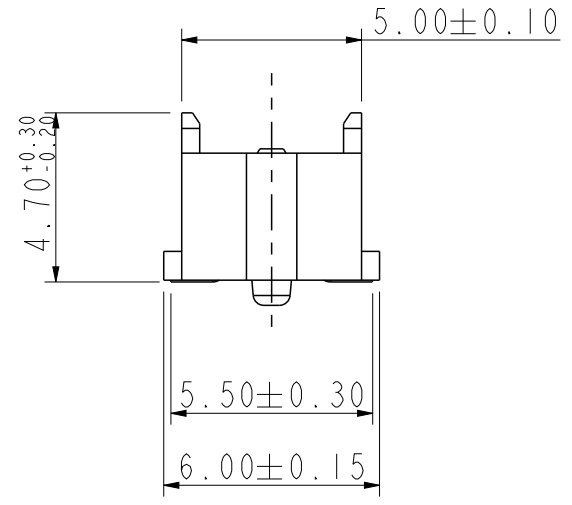
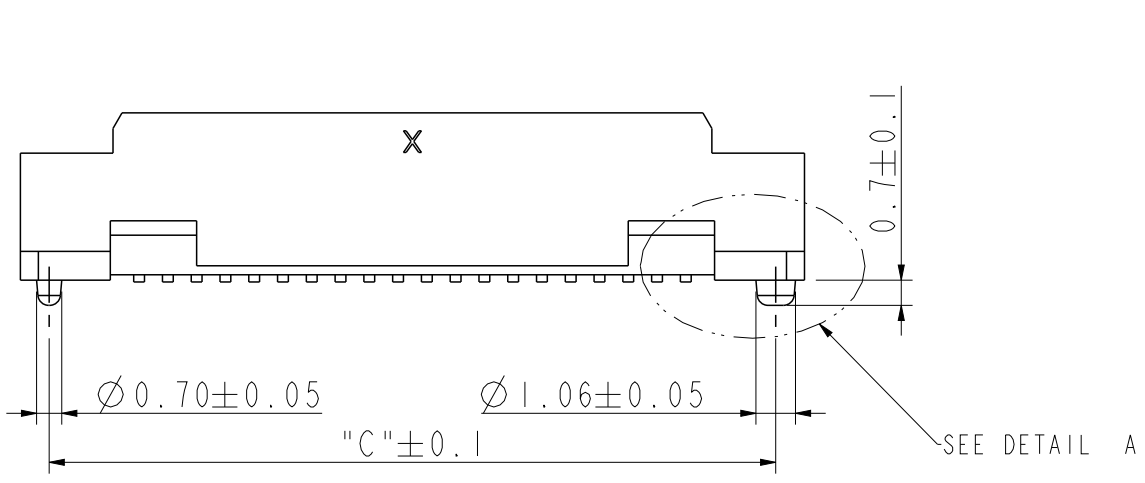
Amphenol FCI

© 2016 AFCI



DATE CODE: XXXXXX
 DAY(01~31)
 MONTH(01~12)
 YEAR(00~99)

DETAIL AA



PLUG 1 WITHOUT SPACER

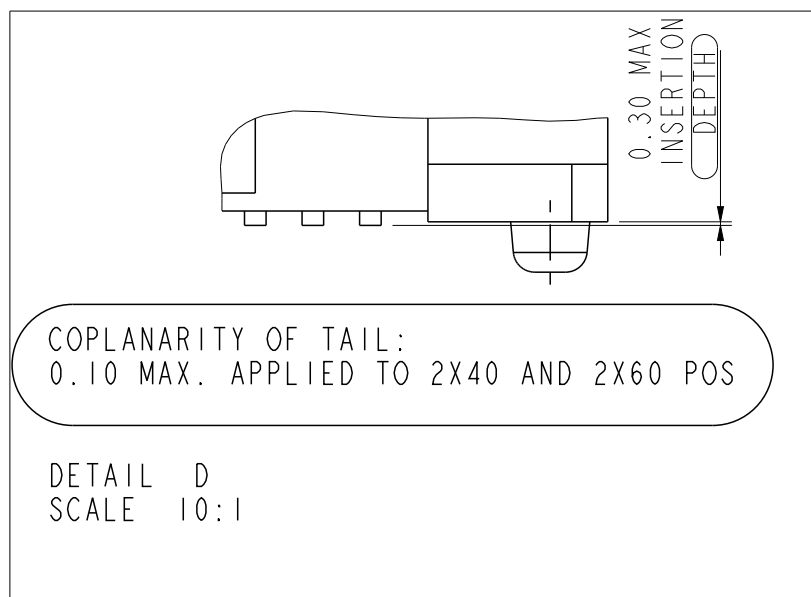
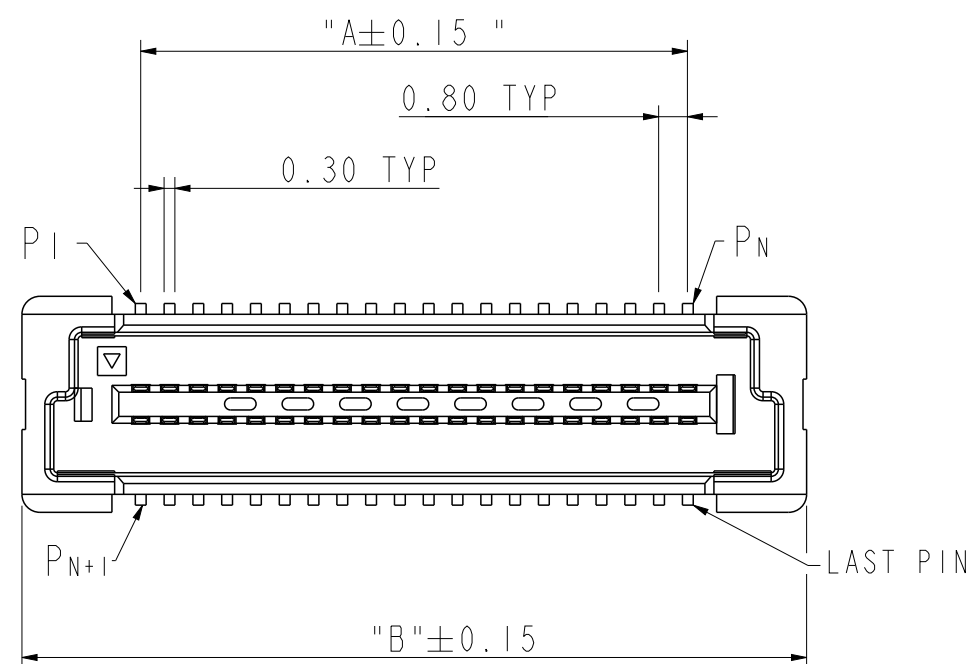
spec ref	-	dr	Eric Huang	2016/08/02	projection	mm	size	A3	scale	DRAWING SCALE
tolerance std	ISO 406 ISO 1101	eng	Bob Gu	2018/11/19			ecn no	ELX-N-31112-1	rel level Released	
TOLERANCES UNLESS OTHERWISE SPECIFIED		chr	-	-			product family	rel level		
surface	linear	0.X	±0.3	Amphenol FCi	BERGSTAK+ 0.8mm		dwg no	10139085		rev C
		0.XX	±0.15		PLUG CONN					
	angular	0°	±2°		cat. no.	Product - Customer Drw		sheet 2 of 4		

A

B

A

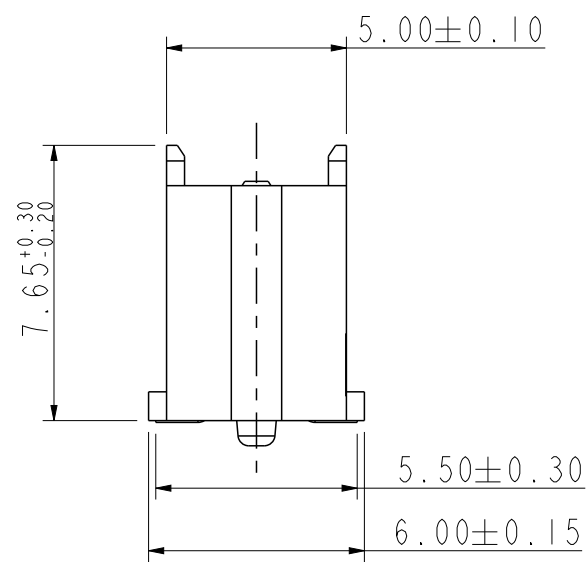
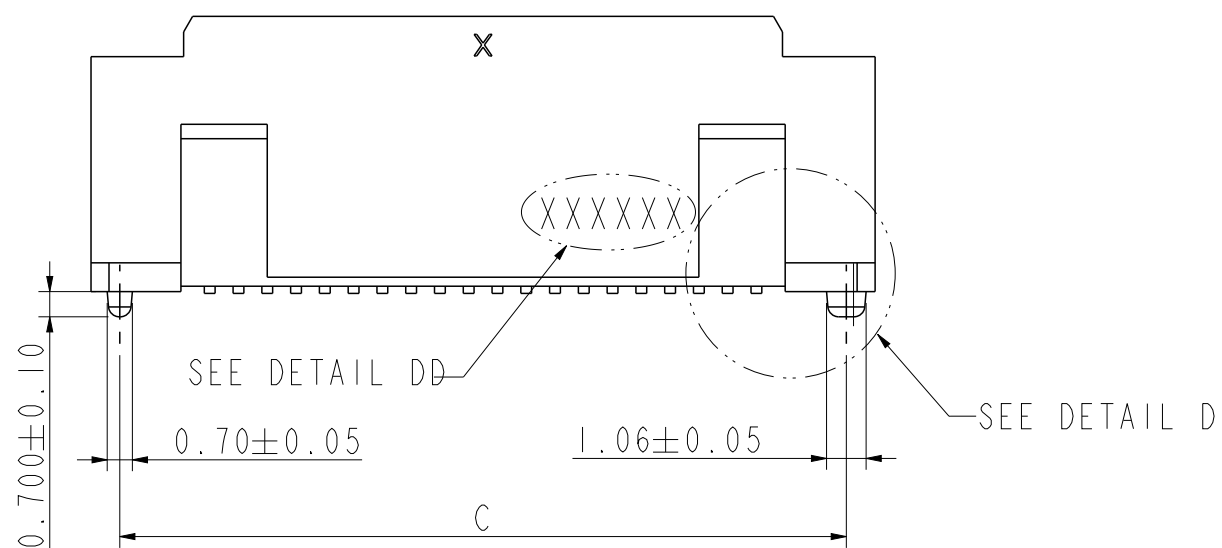
B



Amphenol FCI

C

C



DATE CODE: XXXXXX

- └── DAY(01~31)
- └── MONTH(01~12)
- └── YEAR(00~99)

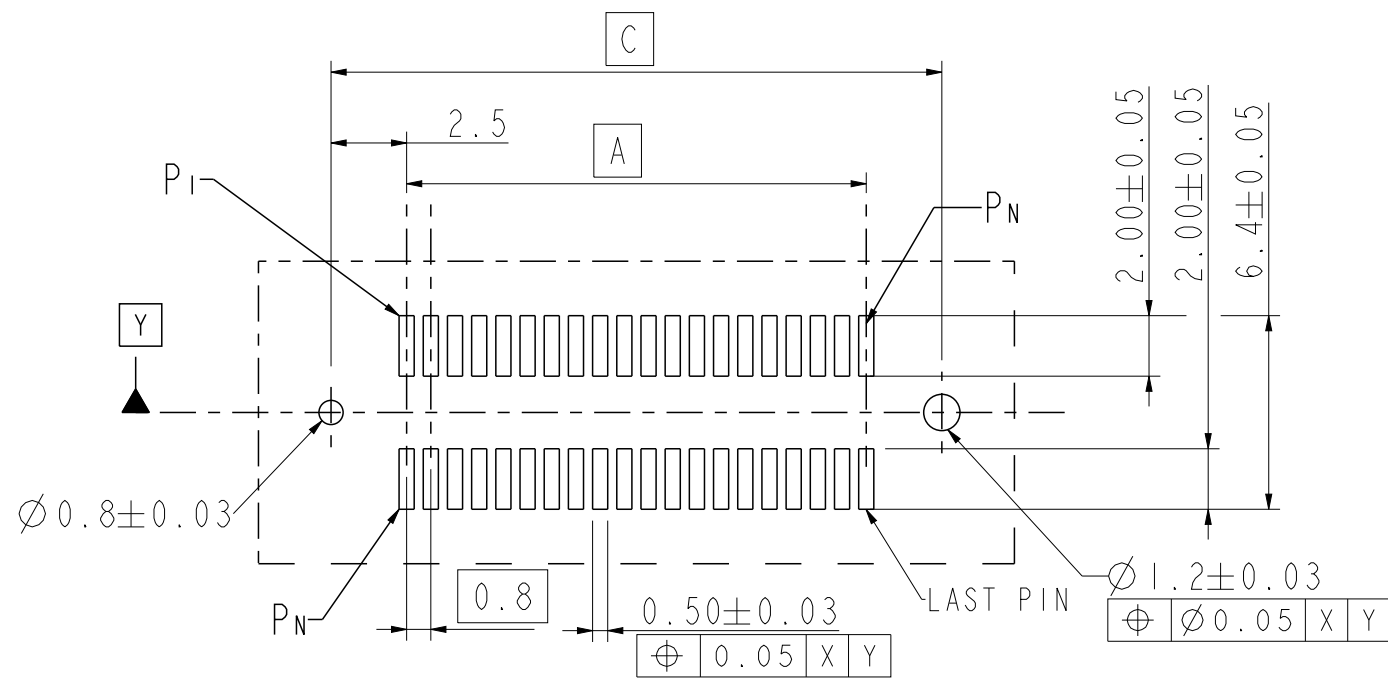
DETAIL DD

PLUG 4 WITH SPACER

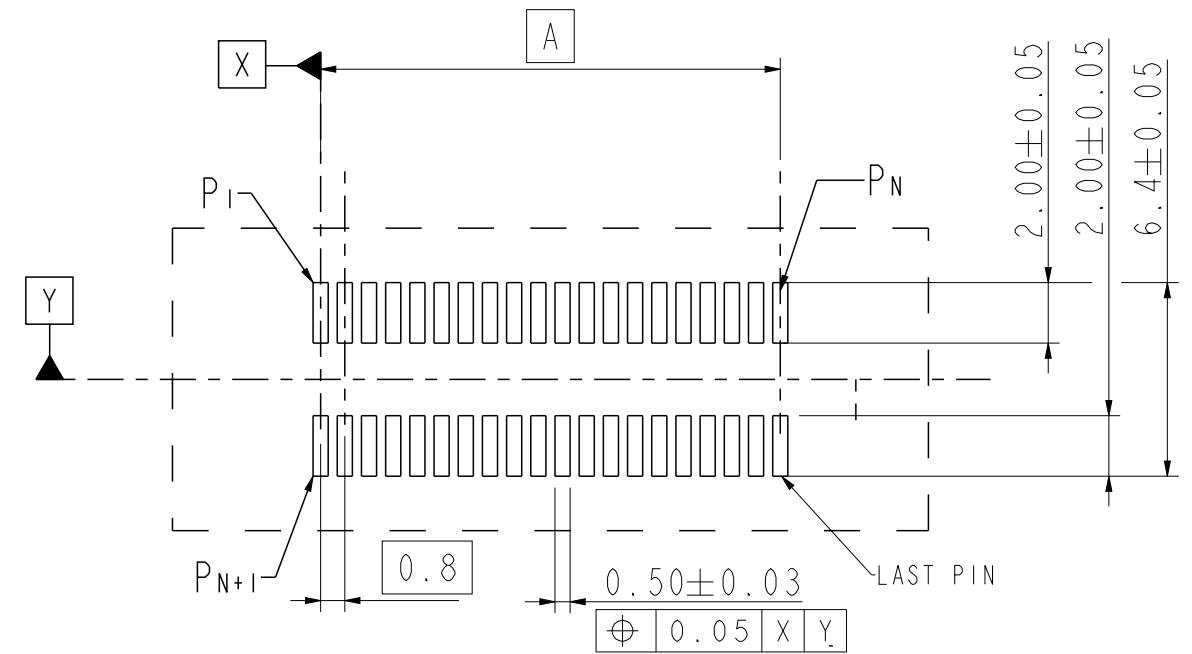
spec ref	-	dr	Eric Huang	2016/08/02	projection	mm	size	A3	scale	DRAWING SCALE
tolerance std	ISO 406 ISO 1101	eng	Bob Gu	2018/11/19			ecn no	ELX-N-31112-1	rel level	Released
TOLERANCES UNLESS OTHERWISE SPECIFIED		chr	-	-			product family	BERGSTAK+ 0.8mm PLUG CONN	rel level	Released
surface	linear	0.X	±0.3	Amphenol FCI	cat. no.	Product - Customer Drw	dwg no	10139085	rev	C
		0.XX	±0.15							
		0.XXX	±0.08							
	angular	0°	±2°							
ISO 1302										sheet 3 of 4

© 2016 AFCI

AA	POSITION	DIMENSION	
		"A"	"C"
08	2X40	31.2	36.2
12	2X60	47.2	52.2



RECOMMENDED PLUG PCB LAYOUT WITH PEG FOR NO. OF POS , 2X40, 2X60



RECOMMENDED PLUG PCB LAYOUT WITHOUT PEG FOR NO. OF POS , 2X40, 2X60

spec ref	-	dr	Eric Huang	2016/08/02	projection	mm	size	A3	scale	DRAWING SCALE
tolerance std	ISO 406 ISO 1101	eng	Bob Gu	2018/11/19			ecn no	ELX-N-31112-1		
	TOLERANCES UNLESS OTHERWISE SPECIFIED	chr	-	-			rel level	Released		
surface	linear	appr	Tim Yao	2018/11/30	product family	BERGSTAK+ 0.8mm	dwg no	10139085		
	angular					PLUG CONN	rev	C		
ISO 1302	0.X ±0.3 0.XX ±0.15 0.XXX ±0.08				cat. no.	Product - Customer Drw	sheet 4 of 4			