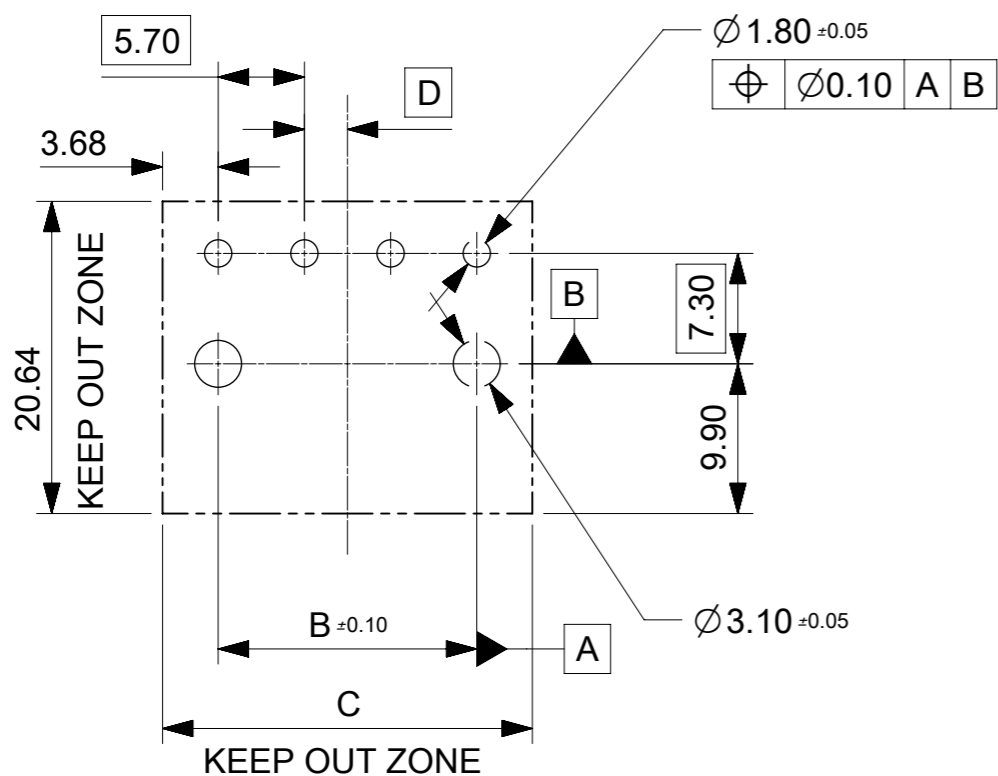
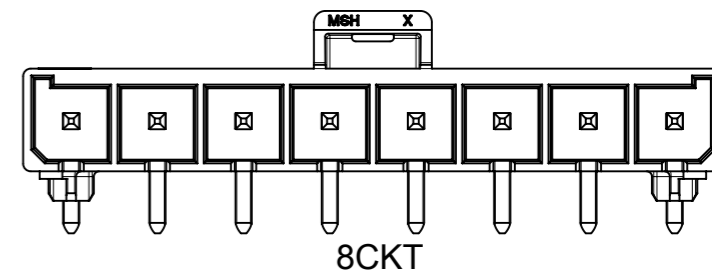
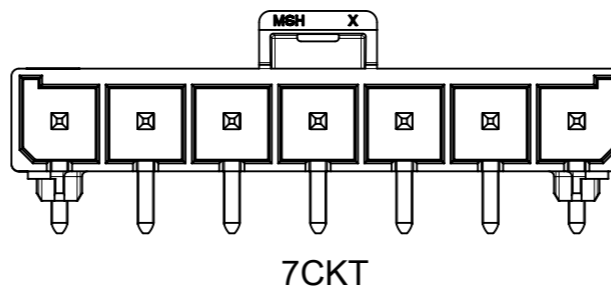
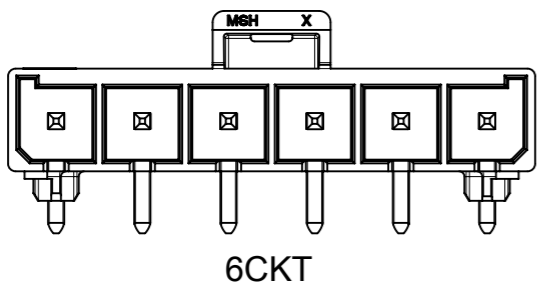
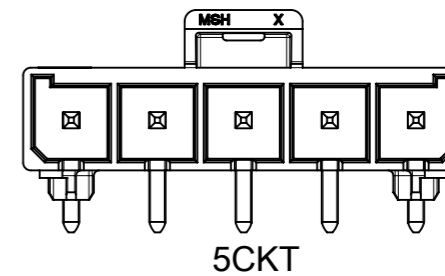
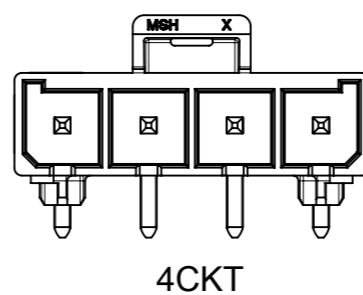
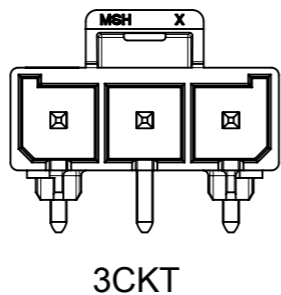
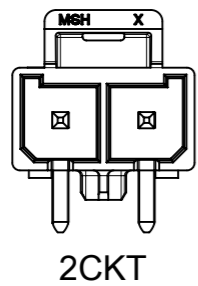


NOTES:

1. MATERIAL:
HOUSING LCP, UL94V-0, GLOW WIRE CAPABLE PER IEC-60335-1 5TH EDITION, COLOR: BLACK .
TERMINAL: HIGH CONDUCTIVITY COPPER.
2. TERMINAL PLATING:
(TIN) 1.52 MICROMETER MIN (60 MICROINCH MIN) REFLOWED MATTE TIN OVER
1.27 MICROMETER MIN (50 MICROINCH MIN) MIN NICKEL OVERALL.
(15 GOLD) 0.38 MICROMETER MIN (15 MICROINCH MIN) SELECTIVE GOLD ON CONTACT AREA
WITH 2.54 MICROMETER MIN (100 MICROINCHES MIN) SELECTIVE TIN ON SOLDER AREA
BOTH OVER 1.27 MICROMETER MIN (50 MICROINCHES MIN) NICKEL OVERALL.
(30 GOLD) 0.76 MICROMETER MIN (30 MICROINCH MIN) SELECTIVE GOLD ON CONTACT AREA
WITH 2.54 MICROMETER MIN (100 MICROINCHES MIN) SELECTIVE TIN ON SOLDER AREA
BOTH OVER 1.27 MICROMETER MIN (50 MICROINCHES MIN) NICKEL OVERALL.
3. PRODUCT SPECIFICATION 1720631000-PS.
4. PACKAGING: TRAY PACKED PER MOLEX SPECIFICATION 2002412000.
5. PART MATES WITH MOLEX PART NUMBER 200456 SERIES.
6. APPLICATION SPECIFICATION: AS-76823-200
7. PARTS CONFORM TO CLASS "B" REQUIREMENTS OF COSMETIC SPECIFICATION PS-45499-002.
8. TO AVOID INTERFERENCE BETWEEN RECEPTACLE AND PCB, HEADER MUST BE PLACED WITHIN 12.00MM MAX FROM EDGE OF PCB

SYMBOLS	THIS DRAWING CONTAINS INFORMATION THAT IS PROPRIETARY TO MOLEX ELECTRONIC TECHNOLOGIES, LLC AND SHOULD NOT BE USED WITHOUT WRITTEN PERMISSION		CURRENT REV DESC:		molex			
	DIMENSION UNITS	SCALE						
▽ = 0	mm	2:1	EC NO: 624315 DRWN: ALUO02 2019/10/14 CHK'D: AYIN 2019/10/29 APPR: AYIN 2019/10/29		MEGA-FIT S/R HEADER ASSEMBLY(R/A)			
▽ = 0	GENERAL TOLERANCES (UNLESS SPECIFIED)							
▽ = 0	ANGULAR TOL ± 0.5°				PRODUCT CUSTOMER DRAWING			
▽ = 0	4 PLACES	±						
▽ = 0	3 PLACES	±	INITIAL REVISION: DRWN: YXZHENG 2016/09/22 APPR: YXZHENG 2018/08/06		DOCUMENT NUMBER	DOC TYPE	DOC PART	REVISION
▽ = 0	2 PLACES	± 0.25			2002412000	PSD	000	C
▽ = 0	1 PLACE	± 0.35	THIRD ANGLE PROJECTION		MATERIAL NUMBER		CUSTOMER	
▽ = 0	0 PLACES	±			SEE CHART		GENERAL MARKET	
▽ = 0	DRAFT WHERE APPLICABLE MUST REMAIN WITHIN DIMENSIONS		DRAWING		SERIES	SHEET NUMBER		
▽ = 0			A3-SIZE		200241	1 OF 3		



PCB LAYOUT:
 1.COMPONENT SIDE
 2.RECOMMEND PCB THICKNESS:1.58MM/.062IN TO 2.36MM/.093IN

SYMBOLS		THIS DRAWING CONTAINS INFORMATION THAT IS PROPRIETARY TO MOLEX ELECTRONIC TECHNOLOGIES, LLC AND SHOULD NOT BE USED WITHOUT WRITTEN PERMISSION	
$\nabla = 0$	mm	SCALE	2:1
$\nabla = 0$	GENERAL TOLERANCES (UNLESS SPECIFIED)		
$\nabla = 0$	ANGULAR TOL $\pm 0.5^\circ$		
$\nabla = 0$	4 PLACES	\pm	
$\nabla = 0$	3 PLACES	\pm	
$\nabla = 0$	2 PLACES	± 0.25	
$\nabla = 0$	1 PLACE	± 0.35	
$\nabla = 0$	0 PLACES	\pm	
$\nabla = 0$	DRAFT WHERE APPLICABLE MUST REMAIN WITHIN DIMENSIONS		
CURRENT REV DESC:		EC NO: 624315	
		DRWN: ALUO02 2019/10/14	
		CHK'D: AYIN 2019/10/29	
		APPR: AYIN 2019/10/29	
INITIAL REVISION:		DRWN: YXZHENG 2016/09/22	
		APPR: YXZHENG 2018/08/06	
DOCUMENT NUMBER		2002412000	
DOC TYPE		PSD	
DOC PART		000	
REVISION		C	
MATERIAL NUMBER		SEE CHART	
CUSTOMER		GENERAL MARKET	
THIRD ANGLE PROJECTION		DRAWING	
A3-SIZE		SERIES	
200241		MATERIAL NUMBER	
SEE CHART		CUSTOMER	
GENERAL MARKET		SHEET NUMBER	
2 OF 3			

CKT SIZE	RESIN COLER	PART NO.	PLATING	DIM.A	DIM.B	DIM.C	DIM.D	PK SPEC
2	BLACK	2002411212	TIN	12.05	N/A	13.05	2.85	TRAY
3		2002411213		17.75	11.40	18.75	0.00	
4		2002414214		23.45	17.10	24.45	2.85	
5		2002411215		29.15	22.80	30.15	0.00	
6		2002411216		34.85	28.50	35.85	2.85	
7		2002411217		40.55	30.20	41.55	0.00	
8		2002411218		46.25	39.90	47.25	2.85	
2		2002411222		12.05	N/A	13.05	2.85	
3		2002411223	17.75	11.40	18.75	0.00		
4		2002411224	23.45	17.10	24.45	2.85		
5		2002411225	29.15	22.80	30.15	0.00		
6		2002411226	34.85	28.50	35.85	2.85		
7		2002411227	40.55	34.20	41.55	0.00		
8		2002411228	46.25	39.90	47.25	2.85		
2		2002411232	12.05	N/A	13.05	2.85		
3		2002411233	17.75	11.40	18.75	0.00		
4	2002411234	23.45	17.10	24.45	2.85			
5	2002411235	29.15	22.80	30.15	0.00			
6	2002411236	34.85	28.50	35.85	2.85			
7	2002411237	40.55	34.20	41.55	0.00			
8	2002411238	46.25	39.90	47.25	2.85			

CKT SIZE	RESIN COLER	PART NO.	PLATING	DIM.A	DIM.B	DIM.C	DIM.D	PK SPEC
* 2	BLACK	2002411912	TIN	12.05	N/A	13.05	2.85	TAPE&REEL
* 3		2002411913		17.75	11.40	18.75	0.00	
* 4		2002414914		23.45	17.10	24.45	2.85	
* 5		2002411915		29.15	22.80	30.15	0.00	
* 6		2002411916		34.85	28.50	35.85	2.85	
* 7		2002411917		40.55	30.20	41.55	0.00	
* 8		2002411918		46.25	39.90	47.25	2.85	
* 2		2002411922		12.05	N/A	13.05	2.85	
* 3		2002411923	17.75	11.40	18.75	0.00		
* 4		2002411924	23.45	17.10	24.45	2.85		
* 5		2002411925	29.15	22.80	30.15	0.00		
* 6		2002411926	34.85	28.50	35.85	2.85		
* 7		2002411927	40.55	34.20	41.55	0.00		
* 8		2002411928	46.25	39.90	47.25	2.85		
* 2		2002411932	12.05	N/A	13.05	2.85		
* 3		2002411933	17.75	11.40	18.75	0.00		
* 4	2002411934	23.45	17.10	24.45	2.85			
* 5	2002411935	29.15	22.80	30.15	0.00			
* 6	2002411936	34.85	28.50	35.85	2.85			
* 7	2002411937	40.55	34.20	41.55	0.00			
* 8	2002411938	46.25	39.90	47.25	2.85			

* DESIGNATES PART NOT RELEASED
CONTACT FACTORY FOR AVAILABILITY.

SYMBOLS = 0 = 0 = 0 = 0 = 0 = 0 = 0 = 0	THIS DRAWING CONTAINS INFORMATION THAT IS PROPRIETARY TO MOLEX ELECTRONIC TECHNOLOGIES, LLC AND SHOULD NOT BE USED WITHOUT WRITTEN PERMISSION DIMENSION UNITS: mm SCALE: 1:1	CURRENT REV DESC: EC NO: 624315 DRWN: ALUO02 2019/10/14 CHK'D: AYIN 2019/10/29 APPR: AYIN 2019/10/29 INITIAL REVISION: DRWN: YXZHENG 2016/09/22 APPR: YXZHENG 2018/08/06	molex		
	GENERAL TOLERANCES (UNLESS SPECIFIED) ANGULAR TOL ± 0.5° 4 PLACES ± 3 PLACES ± 2 PLACES ± 0.25 1 PLACE ± 0.35 0 PLACES ±		MEGA-FIT S/R HEADER ASSEMBLY(R/A)		
	DRAFT WHERE APPLICABLE MUST REMAIN WITHIN DIMENSIONS		PRODUCT CUSTOMER DRAWING		
	THIRD ANGLE PROJECTION 		DRAWING: A3-SIZE SERIES: 200241	DOCUMENT NUMBER: 2002412000 DOC TYPE: PSD DOC PART: 000 REVISION: C	GENERAL MARKET 3 OF 3