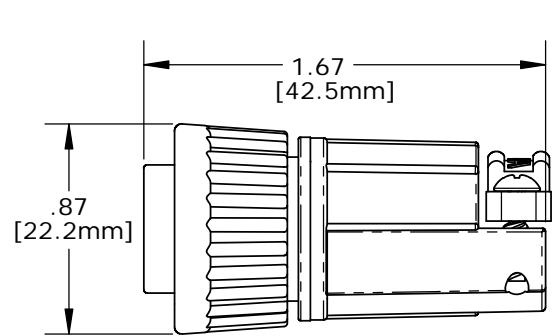
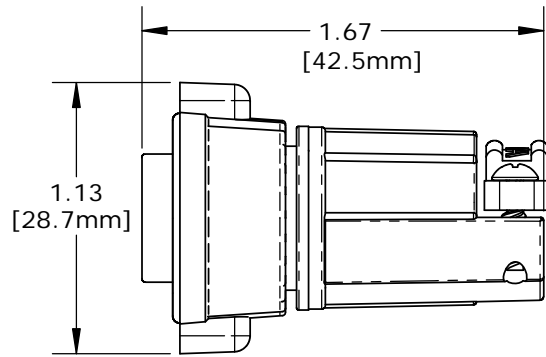


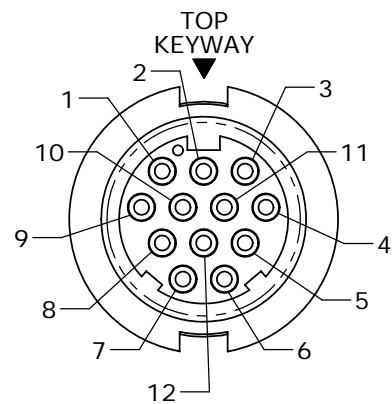
- NOTES:
1. PARTS TO BE BULK PACKED.
 2. SOLDER CONTACTS ARE PRESSED INTO CONNECTOR.
ALL SOLDER CUPS ARE TO BE FACING TOP KEY.
 3. ALL DIMENSIONS ARE REFERENCE ONLY.
DIMENSIONS IN BRACKET [] ARE METRIC.



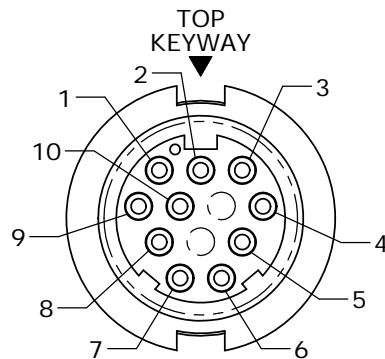
ASSEMBLED VIEW SHOWN
WITH STANDARD COUPLING RING



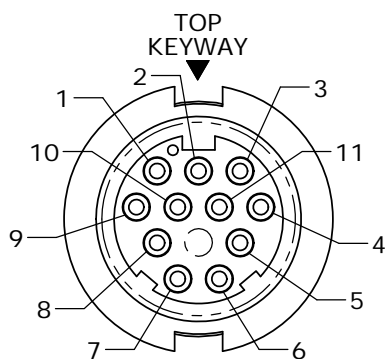
ASSEMBLED VIEW SHOWN
WITH WING COUPLING RING



FACE VIEW
W3282-12PG-5XX(W)



FACE VIEW
W3282-10PG-5XX(W)



FACE VIEW
W3282-11PG-5XX(W)

O-RING
MAT'L: RUBBER,
BLACK

CABLE INSERT, MALE
MAT'L: UV THERMOPLASTIC,
BLACK

#20 PIN CONTACTS
SOLDER CUP,
GOLD PLATED
SEE NOTE 2

KIT PART NO.	GROMMET SIZE TO FIT CABLE O.D.	DIA. "D"
W3282-1XPG-518(W)	0.18 - 0.20 [4.6-5.1mm]	Ø0.77 [19.6mm]
W3282-1XPG-521(W)	0.21 - 0.23 [5.3-5.8mm]	Ø0.77 [19.6mm]
W3282-1XPG-524(W)	0.24 - 0.27 [6.1-6.8mm]	Ø0.77 [19.6mm]
W3282-1XPG-528(W)	0.28 - 0.29 [7.1-7.4mm]	Ø0.77 [19.6mm]
W3282-1XPG-530(W)	0.30 - 0.32 [7.6-8.1mm]	Ø0.77 [19.6mm]
W3282-1XPG-535(W)	0.35 - 0.40 [8.9-10.2mm]	Ø0.83 [21.1mm]

(WING COUPLING RING OPTION)
NO. OF CONTACTS

KIT P/N	NO. OF CONTACTS
W3282-10PG-5XX	(10) - #20
W3282-11PG-5XX	(11) - #20
W3282-12PG-5XX	(12) - #20
W3282-10PG-5XXW	(10) - #20
W3282-11PG-5XXW	(11) - #20
W3282-12PG-5XXW	(12) - #20

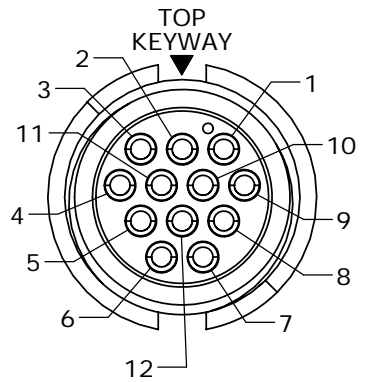
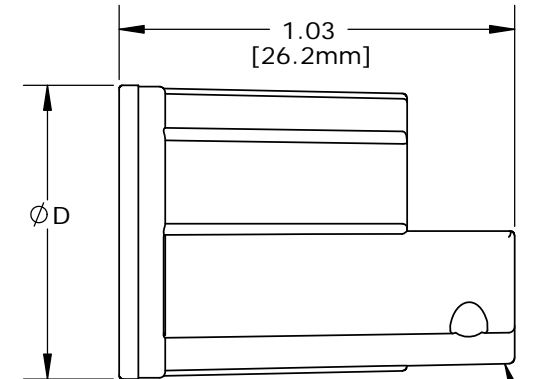
ADD W SUFFIX FOR WINGED COUPLING RING
OPTION

W3282-1XPG-5XX(W)

GROMMET SIZE
SEE P/N LIST
NO. OF CONTACTS

#4 HI/LO SCREW
MAT'L: STAINLESS STEEL

BACKSHELL STRAP
MAT'L: UV THERMOPLASTIC,
BLACK



WIRE VIEW

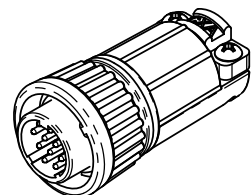
GROMMET,
MAT'L: RUBBER,
BLACK
FOR CABLE O.D.
SEE TABLE

SLEEVE
MAT'L: THERMOPLASTIC,
BLACK

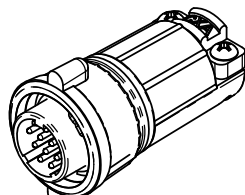
BACKSHELL
MAT'L: UV THERMOPLASTIC,
BLACK

COUPLING RING
MAT'L: UV THERMOPLASTIC,
BLACK

COUPLING RING, WINGED (OPTION)
MAT'L: UV THERMOPLASTIC,
BLACK



ASSEMBLED VIEW SHOWN
WITH STANDARD
COUPLING RING



ASSEMBLED VIEW SHOWN
WITH WING
COUPLING RING

CUSTOMER APPROVAL

THIS DOCUMENT CONTAINS CONFIDENTIAL
INFORMATION PROPRIETARY TO CONXALL
CORPORATION. ANY REPRODUCTION,
DISCLOSURE, OR USE OF THIS
DOCUMENT /INFORMATION IS EXPRESSLY
PROHIBITED UNLESS AUTHORIZED IN
WRITING BY CONXALL CORPORATION.

APPROVED BY: _____

DATE: _____

A	PAK	08/15/19	DRAWING CREATED & RELEASED PER DOR 10-2523JS-1	
REV.	INIT.	DATE	DESCRIPTION	
	PAK	10/01/14	ORIG. DRAWN BY: DATE: 10/01/14	
ALL INFORMATION ILLUSTRATED IS THE PROPERTY OF "CONXALL CORPORATION". UNAUTHORIZED DUPLICATION OR DISTRIBUTION OF THIS DOCUMENT IS PROHIBITED.			CHECKED BY:	
ALL UNITS ARE IN FEET, INCHES, FRACTION OF INCHES AND DECIMALS.			APPROVED BY:	
UNLESS OTHERWISE SPECIFIED TOLERANCES: 3 PLACE DECIMALS ±.005 ANGLES ±1° FRACTIONS ±1/16			SCALE NTS	SIZE B
CRITICAL CHARACTERISTIC FLAG PER SPEC. XXXX			SHEET 1 OF 1	
FILE: W3282-1XPG-5XX	DIRECTORY: SLW	PART NUMBER: W3282-1XPG-5XX(W)	REV A	

conxall
601 E. WILDWOOD VILLA PARK, IL 60181

TITLE: CABLE CONNECTOR KIT
#20 PIN CONTACTS (SOLDER), BACKSHELL CLAMP
MULTI-CON-X, E-KEY, WEATHER RESISTANT
STANDARD PRODUCT