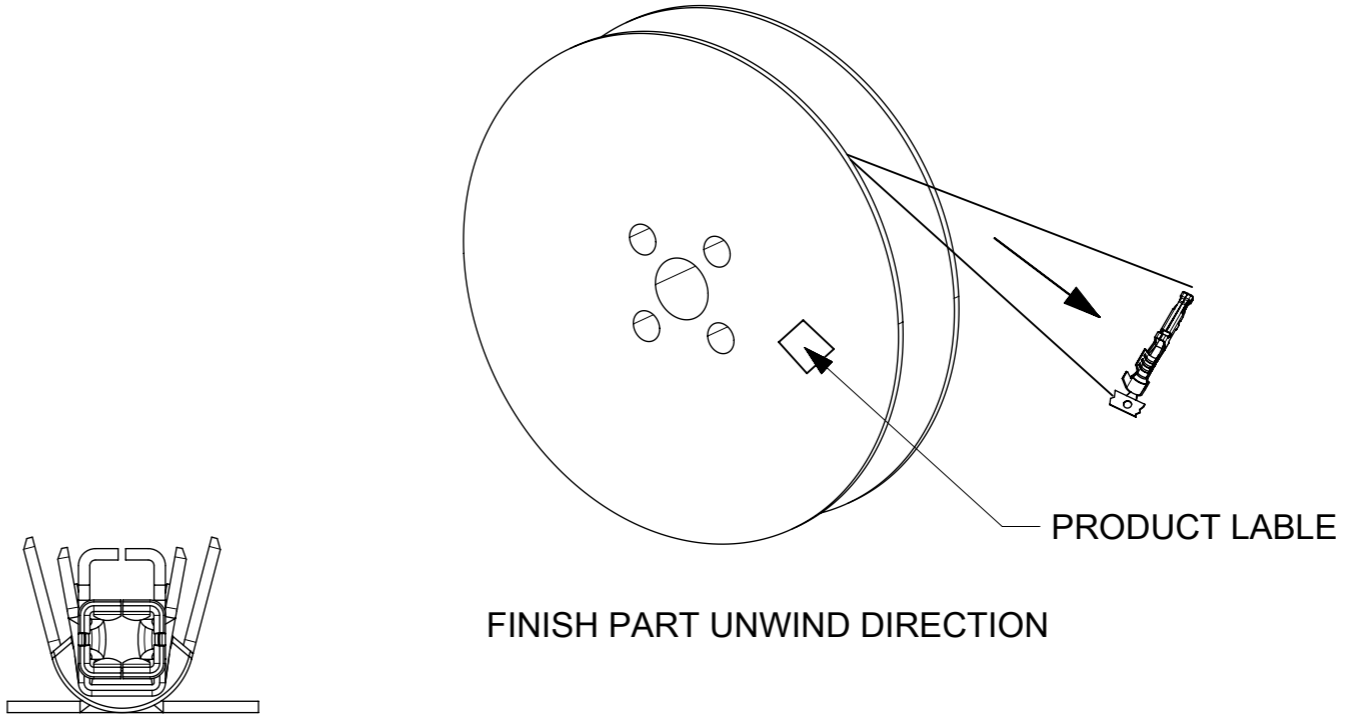
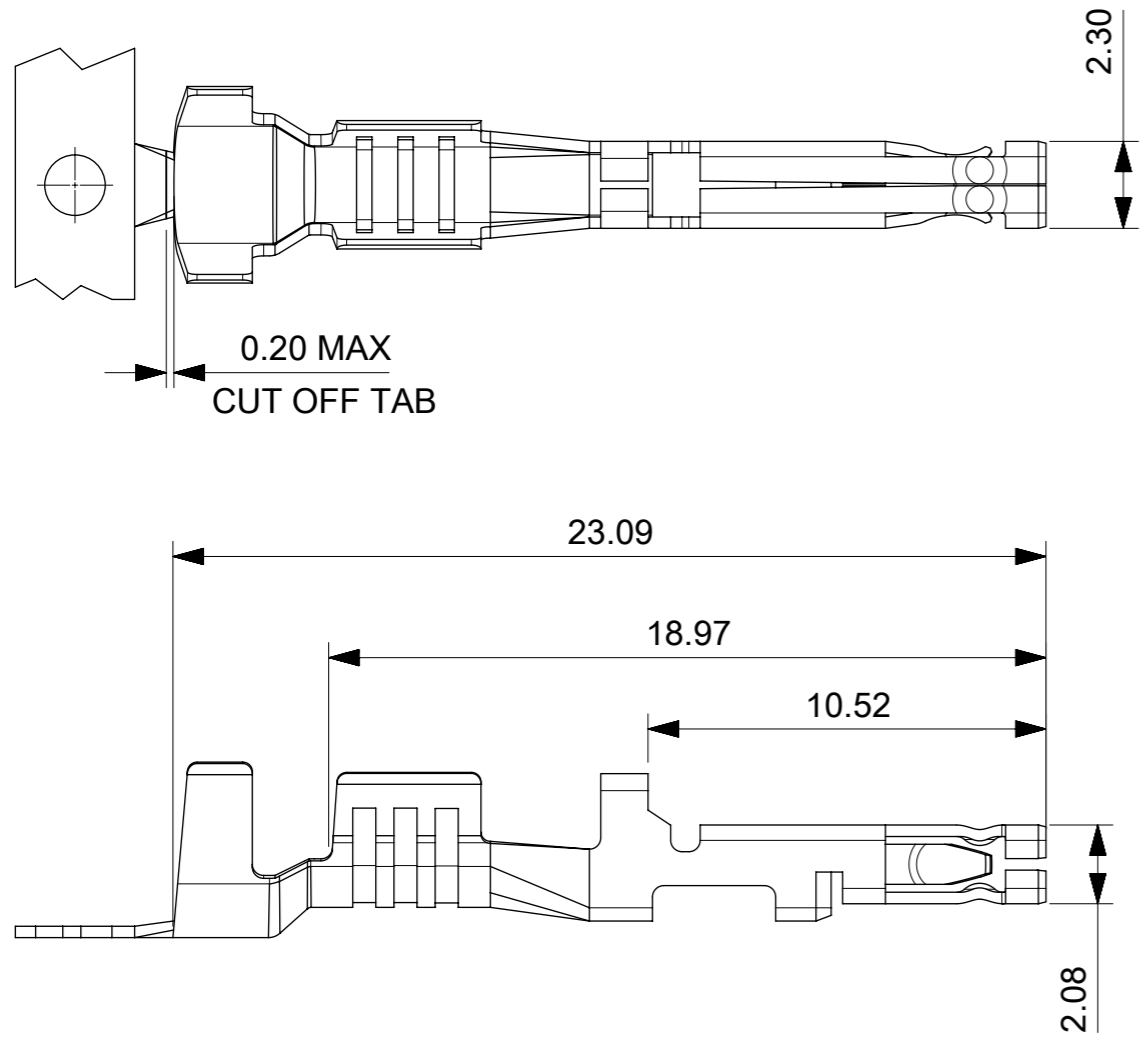
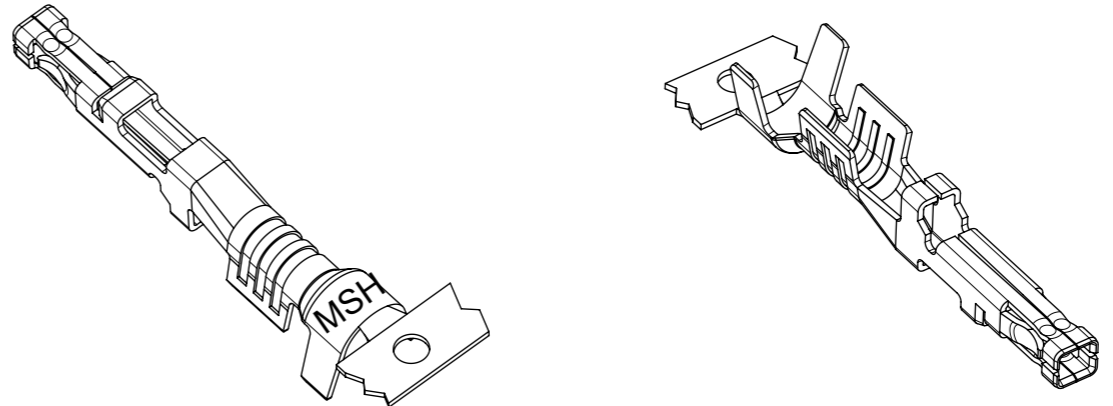


WIRE GAUGE	PART NUMBER	PLATING OPTION	LUBED
12AWG	76823-0343	HOT DIP TIN PREPLATE-OVERALL 1.0μm(40μ") MIN	YES
14/16AWG	76823-0344		
12AWG	172063-0333	15u" GOLD 0.38μm(15μ") GOLD CONTACT AREA, 1.5μm(60μ")-2.5μm(100μ") MATTE TIN, OVER 1.25μm(50μ")-2.5μm(100μ") NICKEL OVERALL	YES
14/16AWG	172063-0334		
12AWG	172063-1333	30u" GOLD 0.76μm(30μ") GOLD CONTACT AREA, 1.5μm(60μ")-2.5μm(100μ") MATTE TIN, OVER 1.25μm(50μ")-2.5μm(100μ") NICKEL OVERALL	YES
14/16AWG	172063-1334		

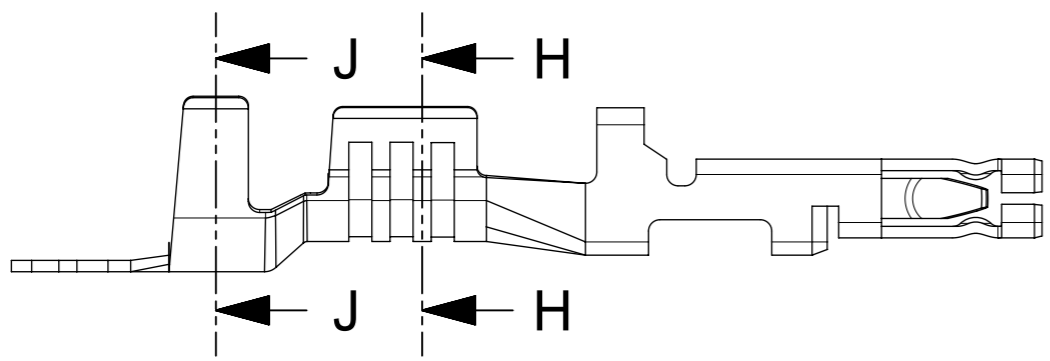


PENDING APPROVAL

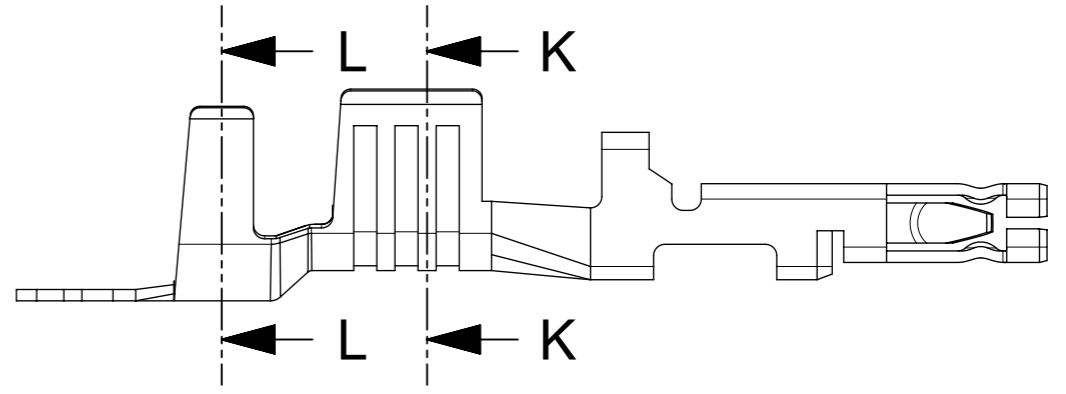
- NOTES:
1. MATERIAL: HIGH CONDUCTIVITY COPPER ALLOY.
 2. FINISH: SEE CHART.
 3. PRODUCT SPECIFICATION: 1720631000-PS/1054171000-PS.
 4. PACKAGING SPECIFICATION: REEL PER 768230200
 5. TERMINAL USED WITH MOLEX SERIES RECEPTACLE: 171692/200456
 6. APPLICATION SPECIFICATION: 768232000-AS

SYMBOLS		THIS DRAWING CONTAINS INFORMATION THAT IS PROPRIETARY TO MOLEX ELECTRONIC TECHNOLOGIES, LLC AND SHOULD NOT BE USED WITHOUT WRITTEN PERMISSION		CURRENT REV DESC:		molex	
▽ = 0	mm	SCALE	4:1	EC NO: 628261			
▽ = 0	GENERAL TOLERANCES (UNLESS SPECIFIED)		DRWN: ALUO02		2019/11/28	MEGA-FIT W/O FIXED 14/16 AND 12 AWG WIRE	
▽ = 0	ANGULAR TOL ± 0.5°		CHK'D:		PRODUCT CUSTOMER DRAWING		
▽ = 0	4 PLACES ±		APPR:		DOCUMENT NUMBER		
▽ = 0	3 PLACES ±		INITIAL REVISION:		768230200	DOC TYPE	DOC PART
▽ = 0	2 PLACES ± 0.25		DRWN: YXZHENG		2016/12/15	PSD	000
▽ = 0	1 PLACE ± 0.35		APPR: YXZHENG		2018/08/06	REVISION	C1
▽ = 0	0 PLACES ±		DRAFT WHERE APPLICABLE MUST REMAIN WITHIN DIMENSIONS		MATERIAL NUMBER		
□ = 0	THIRD ANGLE PROJECTION		DRAWING	SERIES	MATERIAL NUMBER	CUSTOMER	SHEET NUMBER
▽ = 0	A3-SIZE		76823	SEE CHART	GENERAL MARKET	1 OF 2	

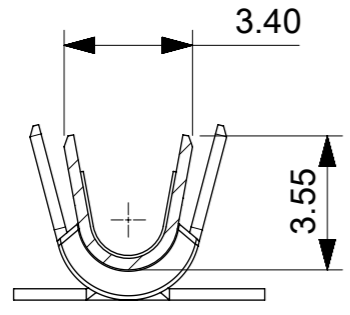
DOCUMENT STATUS	RQ	RELEASE DATE
-----------------	----	--------------



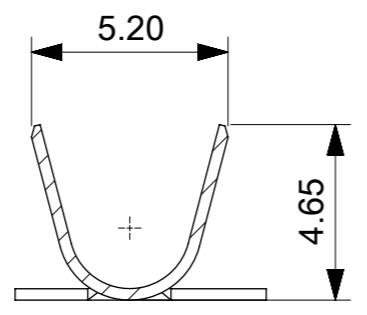
14/16AWG WIRE STYLES



12 AWG WIRE STYLES

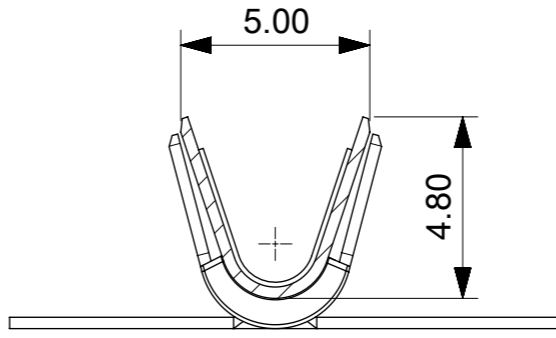


SECTION H-H

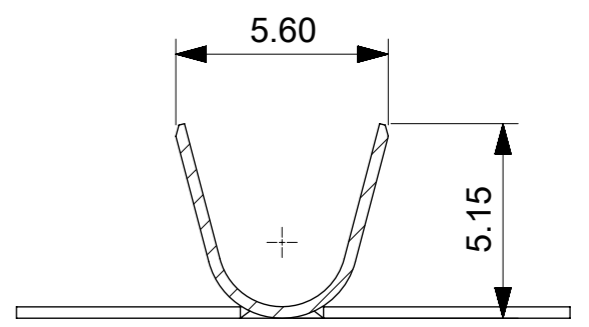


SECTION J-J

CONDUCTOR AND INSULATION 14/16AWG



SECTION K-K



SECTION L-L

CONDUCTOR AND INSULATION 12AWG

PENDING APPROVAL

SYMBOLS		THIS DRAWING CONTAINS INFORMATION THAT IS PROPRIETARY TO MOLEX ELECTRONIC TECHNOLOGIES, LLC AND SHOULD NOT BE USED WITHOUT WRITTEN PERMISSION		CURRENT REV DESC:					
▽ = 0	mm	SCALE	5:1	EC NO: 628261				FEMALE TERMINAL	
▽ = 0	GENERAL TOLERANCES (UNLESS SPECIFIED)			DRWN: ALUO02		2019/11/28		MEGA-FIT W/O FIXED 14/16 AND 12 AWG WIRE	
▽ = 0	ANGULAR TOL ± 0.5°			CHK'D:		PRODUCT CUSTOMER DRAWING			
▽ = 0	4 PLACES ±			APPR:		DOCUMENT NUMBER		DOC TYPE DOC PART REVISION	
▽ = 0	3 PLACES ±			INITIAL REVISION:		768230200		PSD 000 C1	
▽ = 0	2 PLACES ± 0.25			DRWN: YXZHENG		2016/12/15			
▽ = 0	1 PLACE ± 0.35			APPR: YXZHENG		2018/08/06			
▽ = 0	0 PLACES ±			DRAFT WHERE APPLICABLE MUST REMAIN WITHIN DIMENSIONS		THIRD ANGLE PROJECTION		DRAWING SERIES MATERIAL NUMBER CUSTOMER SHEET NUMBER	
▽ = 0						A3-SIZE 76823		SEE CHART GENERAL MARKET 2 OF 2	

DOCUMENT STATUS	RQ	RELEASE DATE
-----------------	----	--------------