

D  
C  
B  
A

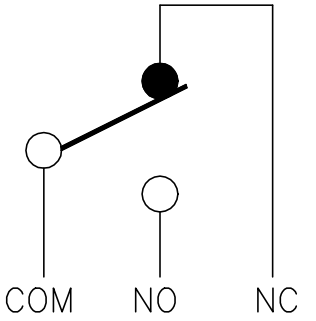
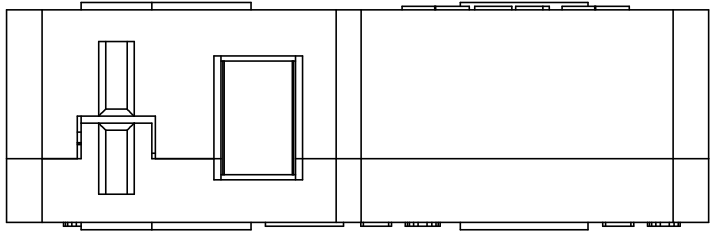
3

2

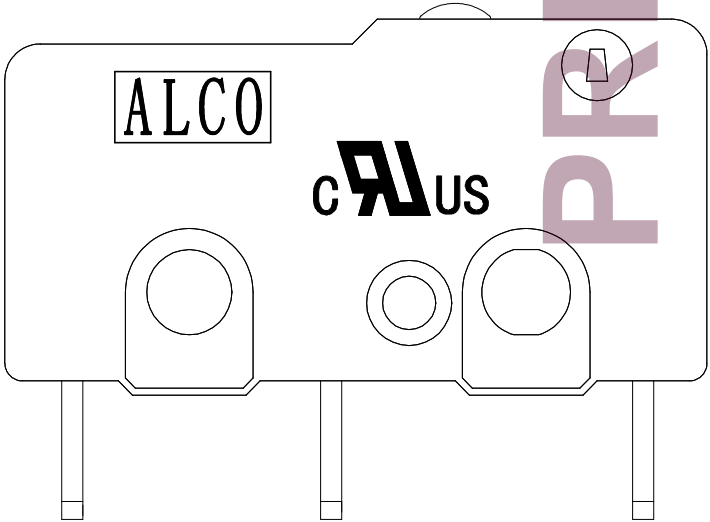
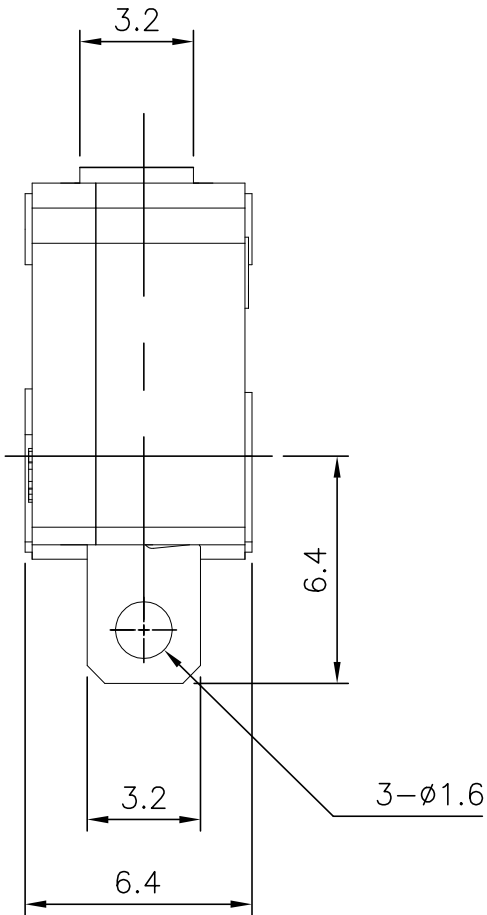
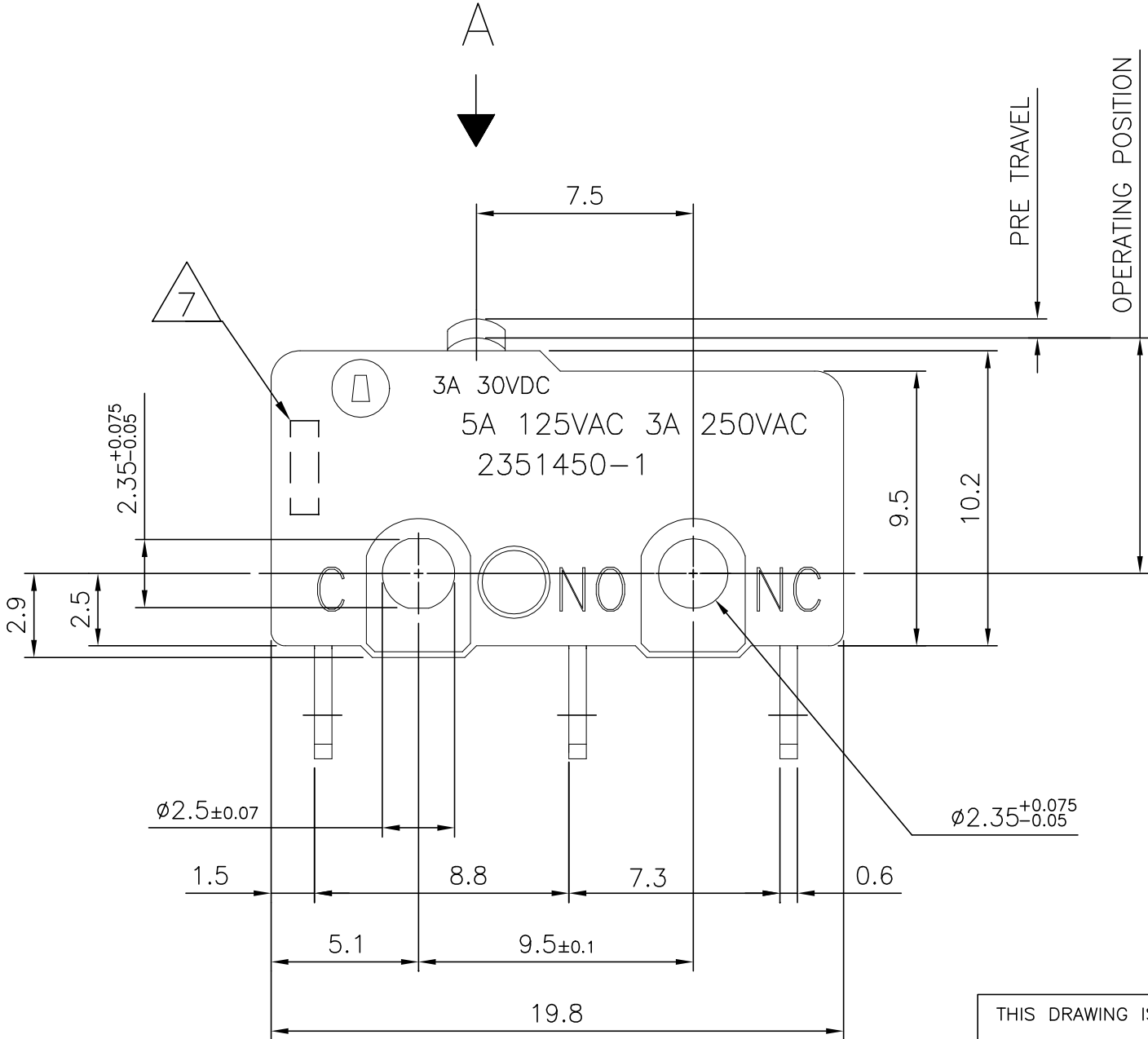
1

THIS DRAWING IS UNPUBLISHED.	RELEASED FOR PUBLICATION
© COPYRIGHT — TE Connectivity Ltd.	ALL RIGHTS RESERVED.

REVISIONS					
P	LTR	DESCRIPTION	DATE	DWN	APVD
	1	NEW DRAWING	09MAY2019	GCM	AS



CIRCUIT DIAGRAM



PRELIMINARY

THIS DRAWING IS A CONTROLLED DOCUMENT.		DWN GANESH CM 09MAY2019	TE Connectivity Ltd.		
		CHK ALEXANDER SHARPE 09MAY2019			
		APVD ALEXANDER SHARPE 09MAY2019	NAME SWITCH, SUBMINIATURE SNAP ACTION, PIN PLUNGER, SOLDER TERMINAL		
		PRODUCT SPEC			
		APPLICATION SPEC			
		WEIGHT			
		CUSTOMER DRAWING			
		SCALE	NTS	SHEET	1 of 2
		REV	1		

4

3

2

1

THIS DRAWING IS UNPUBLISHED.

RELEASED FOR PUBLICATION

© COPYRIGHT – TE Connectivity Ltd.

ALL RIGHTS RESERVED.

REVISIONS

P	LTR	DESCRIPTION	DATE	DWN	APVD
	–	SEE SHEET 1	–	–	–

NOTES:

1. OPERATING CHARACTERISTICS ARE FOR OPERATION IN THE A DIRECTION

2. PACKAGING:  
SWITCHES ARE BULK PACKAGED IN BAGS, 100 SWITCHES PER BAG, 10 BAGS PER BOX.

3. COMPLIANCE:  
THE CURRENT STATEMENT OF COMPLIANCE IS AVAILABLE AT TE.COM.

4. MATERIAL AND FINISH:  
BUTTON: THERMOPLASTIC, WHITE  
COVER: THERMOPLASTIC, BLACK  
SPRING PLATE: COPPER ALLOY  
MOVING PLATE: COPPER ALLOY  
CONTACTS: SILVER ALLOY  
RIVET: ALUMINUM  
TERMINAL: BRASS, SILVER PLATED  
BASE: THERMOPLASTIC, BLACK

5. SPECIFICATIONS:  
CURRENT RATING: SEE TABLE  
CONTACT RESISTANCE: 50mΩ MAXIMUM INITIAL AT FREE POSITION AMD TOTAL TRAVEL POSITION  
INSULATION RESISTANCE: 100MΩ MINIMUM @ 500 V DC FOR 1 MINUTE, INITIAL.  
DIELECTRIC WITHSTANDING VOLTAGE, BETWEEN TERMINALS OF THE SAME POLARITY: 1000 V AC, 50 TO 60 HZ FOR 1 MINUTE  
DIELECTRIC WITHSTANDING VOLTAGE, BETWEEN EACH TERMINAL AND GROUND: 1500 V AC, 50 TO 60 HZ FOR 1 MINUTE  
DIELECTRIC WITHSTANDING VOLTAGE, BETWEEN EACH TERMINAL AND NON–CURRENT CARRYING METAL PART: 1500 V AC, 50 TO 60 HZ FOR 1 MINUTE

6. SOLDER PROCESS:  
MANUAL SOLDERING: 350°C, 3 SECONDS MAXIMUM, 30 TO 40 WATTS. PREVENT SOLDER AND FLUX CONTACTING THE SWITCH BODY.  
DO NOT OPERATE THE SWITCH DURING THE FIRST MINUTE AFTER SOLDERING.  
WAVE SOLDERING: 260°C, 5 SECONDS MAXIMUM. PREVENT SOLDER AND FLUX CONTACTING THE SWITCH BODY.  
DO NOT OPERATE THE SWITCH DURING THE FIRST MINUTE AFTER SOLDERING.

DATE CODE:

7

1

2

3

4

1	DAY	01 TO 31
2	MONTH	1 TO 9,X,Y,Z (X=10,Y=11,Z=12)
3	YEAR	00 TO 99
4	OTHER	N/A

8. CERTIFICATION:

SILVER	SPDT	10,000,000 CYCLES, MINIMUM	10,000 CYCLES, MINIMUM	–40 TO +85°C/85% RELATIVE HUMIDITY MAXIMUM	–40 TO +75°C/60% RELATIVE HUMIDITY MAXIMUM	0.10 MAXIMUM	0.50 MINIMUM	8.4±0.5	0.50 MAXIMUM	0.25N MINIMUM	1.47N MAXIMUM	5A, 125VAC 3A, 250VAC 3A, 30VDC	MOMENTARY	SOLDER	SAJ25YXPP0147SDTSEQ	2351450–1
CONTACT FINISH	CONTACT FORM	MECHANICAL LIFE	ELECTRICAL LIFE	STORAGE TEMPERATURE RANGE/HUMIDITY RANGE	OPERATING TEMPERATURE RANGE/HUMIDITY RANGE	MOVEMENT DIFFERENTIAL	OVERTRAVEL	OPERATING POSITION	PRETRAVEL	RELEASE FORCE	OPERATING FORCE	RATING, RESISTIVE LOAD	CONTACT CONFIGURATION	TERMINAL TYPE	TE SMART PART NUMBER	PART NUMBER

THIS DRAWING IS A CONTROLLED DOCUMENT.

DIMENSIONS:  
mm

MATERIAL  
–

TOLERANCES UNLESS  
OTHERWISE SPECIFIED:

0 PLC ± –  
1 PLC ± –  
2 PLC ± 0.4  
3 PLC ± –  
4 PLC ± –  
ANGLES ± –  
FINISH  
–

DWN  
GANESH CM  
CHK  
ALEXANDER SHARPE  
APVD  
ALEXANDER SHARPE  
PRODUCT SPEC  
APPLICATION SPEC  
WEIGHT  
–  
CUSTOMER DRAWING

09MAY2019  
09MAY2019  
09MAY2019

NAME  
SWITCH, SUBMINIATURE SNAP ACTION,  
PIN PLUNGER, SOLDER TERMINAL  
–  
A300779C=2351450  
SCALE  
NTS

RESTRICTED TO  
–

SHEET  
2 OF 2  
REV  
1

TE Connectivity Ltd.

SWITCH, SUBMINIATURE SNAP ACTION,  
PIN PLUNGER, SOLDER TERMINAL  
–  
A300779C=2351450

PRELIMINARY

1470–19 (1/15)