

D
C
B
A

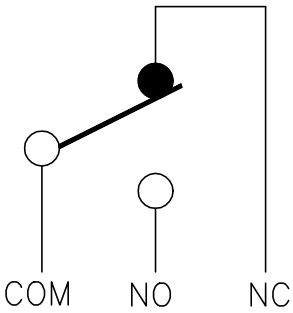
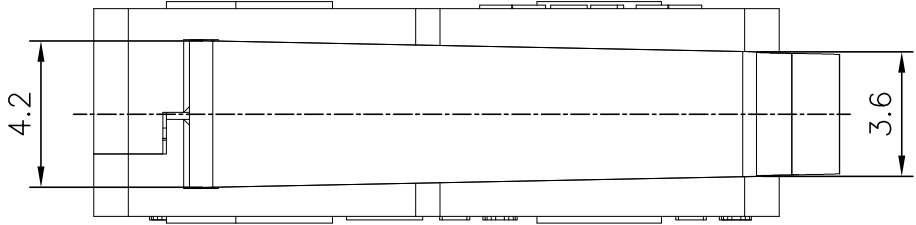
3

2

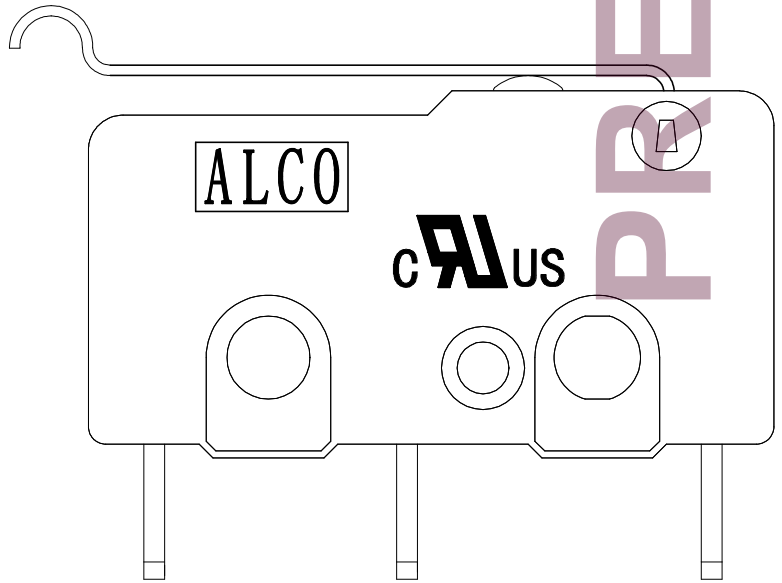
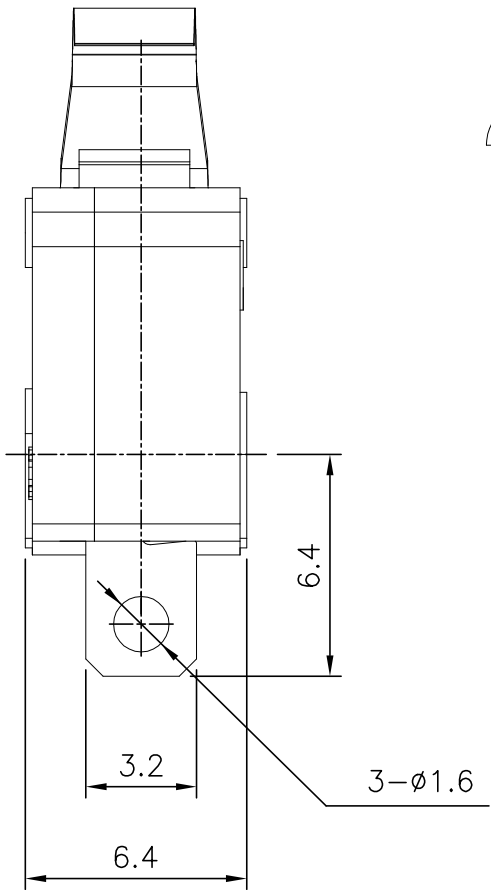
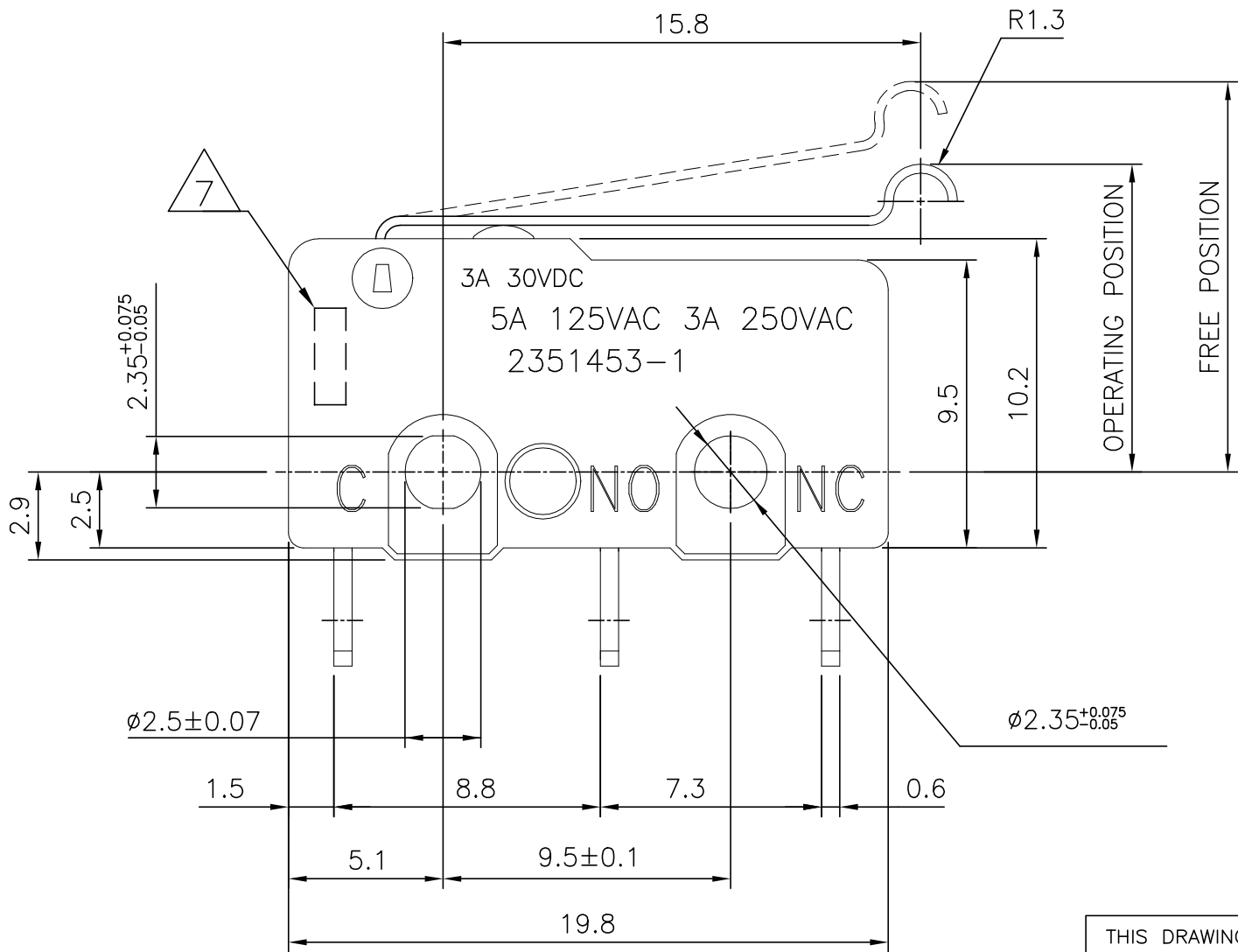
1

THIS DRAWING IS UNPUBLISHED.	RELEASED FOR PUBLICATION
© COPYRIGHT - TE Connectivity Ltd.	ALL RIGHTS RESERVED.

REVISIONS				
P	LTR	DESCRIPTION	DATE	DWN APVD
	1	NEW DRAWING	09MAY2019	GCM AS



CIRCUIT DIAGRAM



PRELIMINARY

THIS DRAWING IS A CONTROLLED DOCUMENT.		DWN 09MAY2019 GANESH CM	TE Connectivity Ltd.		
		CHK 09MAY2019 ALEXANDER SHARPE			
		APVD 09MAY2019 ALEXANDER SHARPE	NAME SWITCH, SUBMINIATURE SNAP ACTION, ROUND FORMED LEVER, SOLDER TERMINAL		
		PRODUCT SPEC			
		APPLICATION SPEC			
		WEIGHT			
		CUSTOMER DRAWING			
		SCALE NTS	SHEET 1 of 2		REV 1

D
C
B
A

REVISIONS					
P	LTR	DESCRIPTION	DATE	DWN	APVD
	—	SEE SHEET 1	—	—	—

1. OPERATING CHARACTERISTICS ARE FOR OPERATION IN THE A DIRECTION ▼
2. PACKAGING:
SWITCHES ARE BULK PACKAGED IN BAGS, 100 SWITCHES PER BAG, 10 BAGS PER BOX.
3. COMPLIANCE:
THE CURRENT STATEMENT OF COMPLIANCE IS AVAILABLE AT TE.COM.
4. MATERIAL AND FINISH:
LEVER: STAINLESS STEEL
BUTTON: THERMOPLASTIC, WHITE
COVER: THERMOPLASTIC, BLACK
SPRING PLATE: COPPER ALLOY
MOVING PLATE: COPPER ALLOY
CONTACTS: SILVER ALLOY
RIVET: ALUMINUM
TERMINAL: BRASS, SILVER PLATED
BASE: THERMOPLASTIC, BLACK
5. SPECIFICATIONS:
CURRENT RATING: SEE TABLE
CONTACT RESISTANCE: 50mΩ MAXIMUM INITIAL AT FREE POSITION AND TOTAL TRAVEL POSITION
INSULATION RESISTANCE: 100MΩ MINIMUM @ 500 V DC FOR 1 MINUTE, INITIAL.
DIELECTRIC WITHSTANDING VOLTAGE, BETWEEN TERMINALS OF THE SAME POLARITY: 1000 V AC
DIELECTRIC WITHSTANDING VOLTAGE, BETWEEN EACH TERMINAL AND GROUND: 1500 V AC, 50% RH
DIELECTRIC WITHSTANDING VOLTAGE, BETWEEN EACH TERMINAL AND NON-CURRENT CARRYING PART: 1500 V AC, 50% RH
6. SOLDER PROCESS:
MANUAL SOLDERING: 350°C, 3 SECONDS MAXIMUM, 30 TO 40 WATTS. PREVENT SOLDER AND FLUX FROM CONTACTING THE SWITCH DURING THE FIRST MINUTE AFTER SOLDERING.
WAVE SOLDERING: 260°C, 5 SECONDS MAXIMUM. PREVENT SOLDER AND FLUX CONTACTING THE SWITCH DURING THE FIRST MINUTE AFTER SOLDERING.


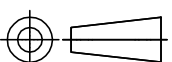
△₇ DATE CODE: □□ □□ □□ □□
 (1) (2) (3) (4)

①	DAY	01 TO 31
②	MONTH	1 TO 9,X,Y,Z (X=10,Y=11,Z=12)
③	YEAR	00 TO 99
④	OTHER	N/A

8. CERTIFICATION: **cALUS**

SILVER	SPDT	10,000,000 CYCLES, MINIMUM	10,000 CYCLES, MINIMUM	-40 TO +85°C/85% RELATIVE HUMIDITY MAXIMUM	-40 TO +75°C/60% RELATIVE HUMIDITY MAXIMUM	0.8 MAXIMUM	1.20 MINIMUM	10.7±0.8	15.5 MAXIMUM	0.06N MINIMUM	0.49N MAXIMUM	5A, 125VAC 3A, 250VAC 3A, 30VDC	MOMENTARY	SOLDER	SAJ25YXRHL147SDTSEQ	2351453-1
CONTACT FINISH	CONTACT FORM	MECHANICAL LIFE	ELECTRICAL LIFE	STORAGE TEMPERATURE RANGE/HUMIDITY RANGE	OPERATING TEMPERATURE RANGE/HUMIDITY RANGE	MOVEMENT DIFFERENTIAL	OVERTRAVEL	OPERATING POSITION	FREE POSITION	RELEASE FORCE	OPERATING FORCE	RATING, RESISTIVE LOAD	CONTACT CONFIGURATION	TERMINAL TYPE	TE SMART PART NUMBER	PART NUMBER

PRELIMINARY

THIS DRAWING IS A CONTROLLED DOCUMENT.		DWN 09MAY2019 GANESH CM CHK 09MAY2019 ALEXANDER SHARPE APVD 09MAY2019 ALEXANDER SHARPE PRODUCT SPEC — APPLICATION SPEC — WEIGHT —		 TE Connectivity Ltd. NAME SWITCH, SUBMINIATURE SNAP ACTION, ROUND FORMED LEVER, SOLDER TERMINAL —	
DIMENSIONS: mm 		TOLERANCES UNLESS OTHERWISE SPECIFIED: 0 PLC ± — 1 PLC ± — 2 PLC ± 0.4 3 PLC ± — 4 PLC ± — ANGLES ± —		SIZE A3	
MATERIAL —		FINISH —		CAGE CODE 00779	
				DRAWING NO C-2351453	
				RESTRICTED TO —	
CUSTOMER DRAWING				SCALE NTS	SHEET 2 OF 2
				REV 1	