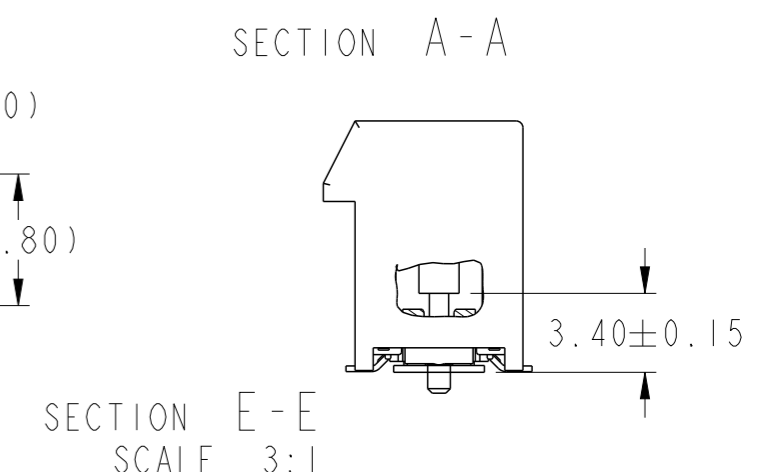
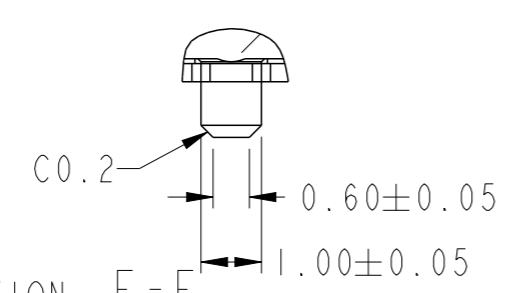
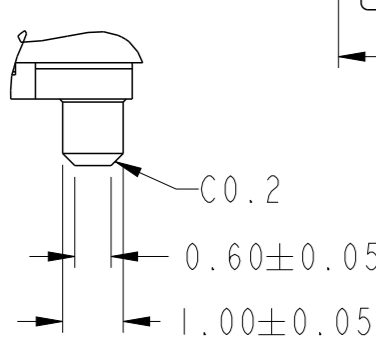
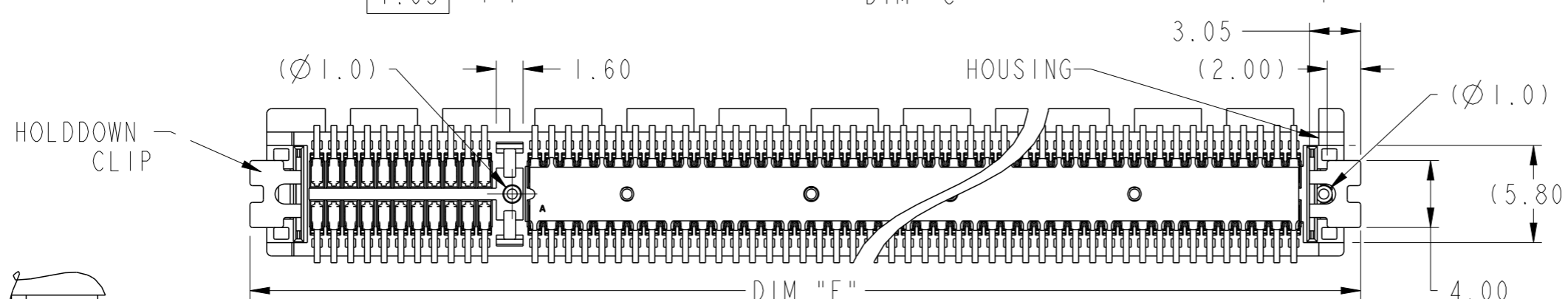
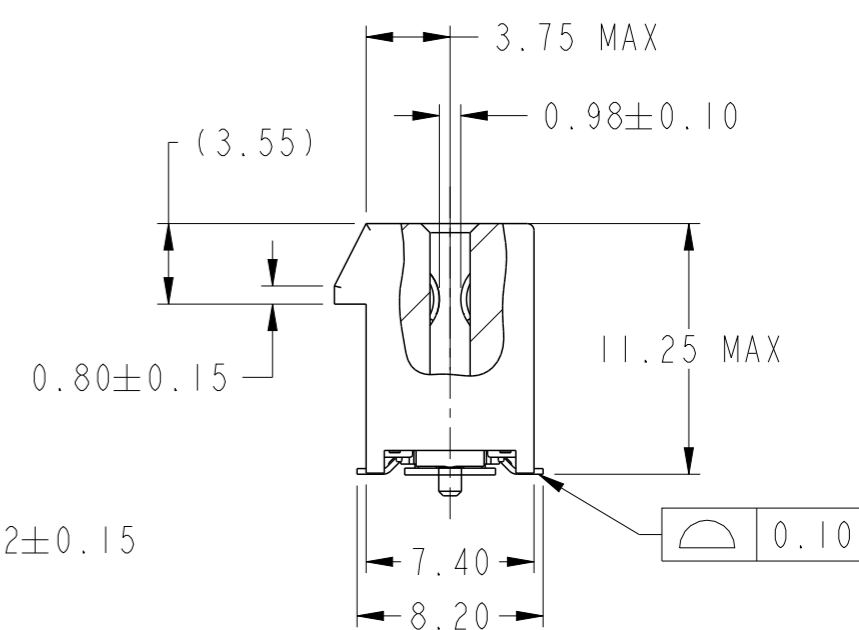
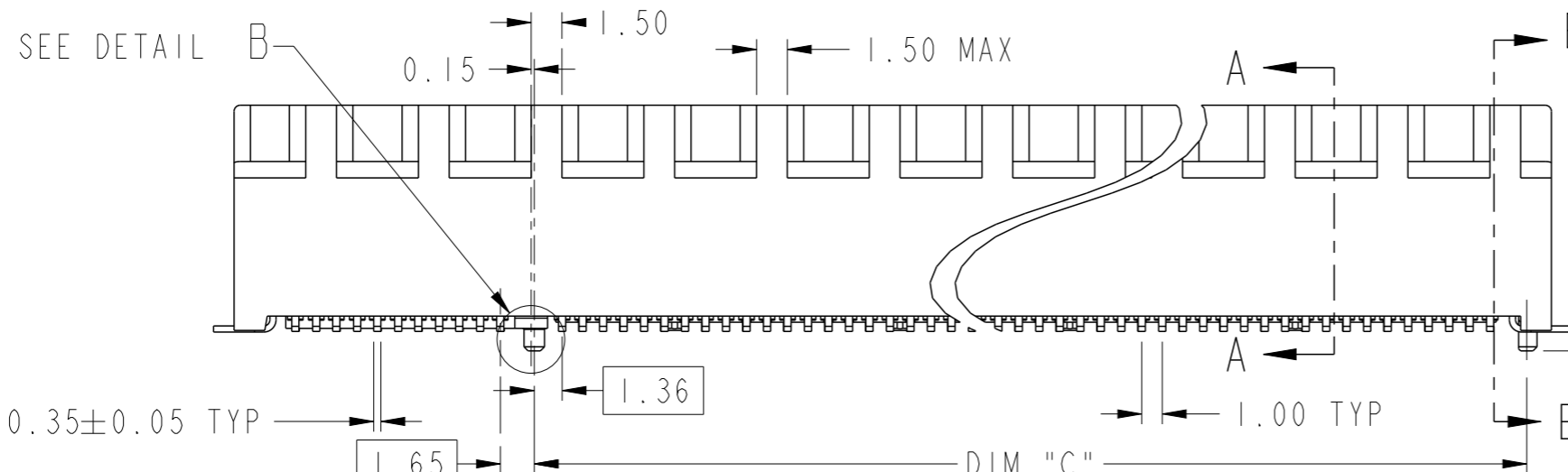
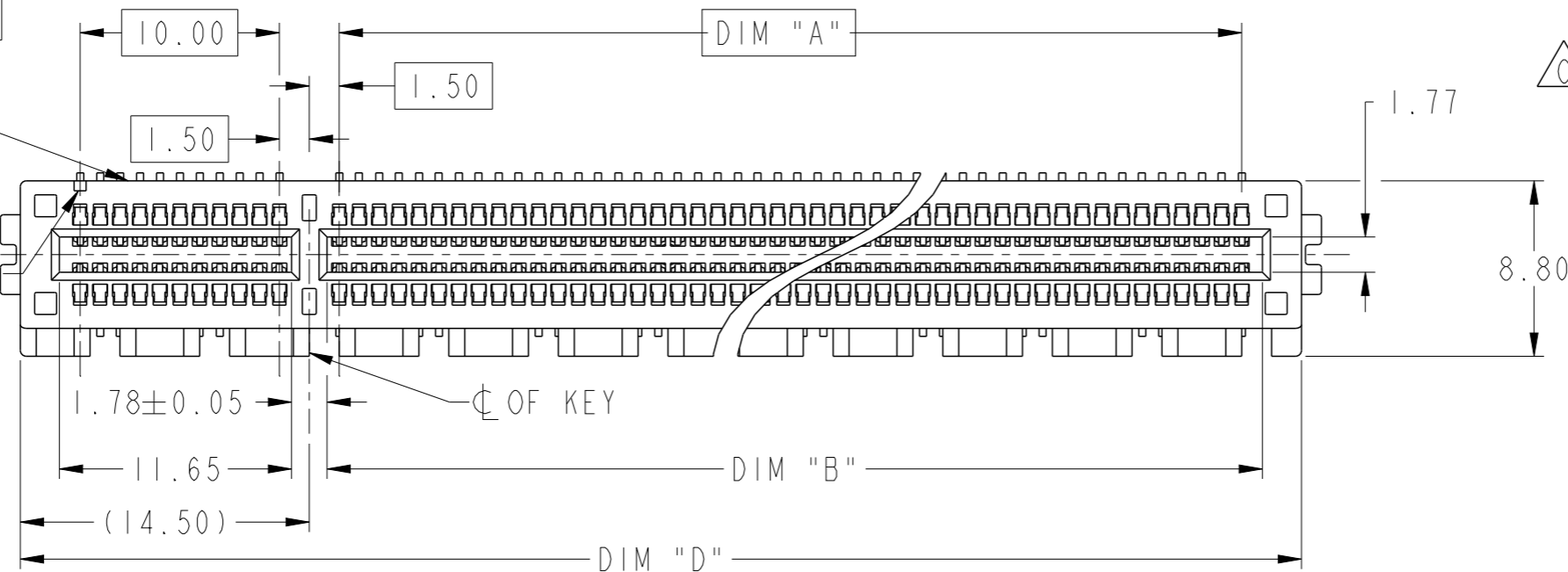


PRODUCT PARTNUMBER  
10146070-1XXXXLF

PARTNO &  
DATECODE

#A1 IDENTIFIER

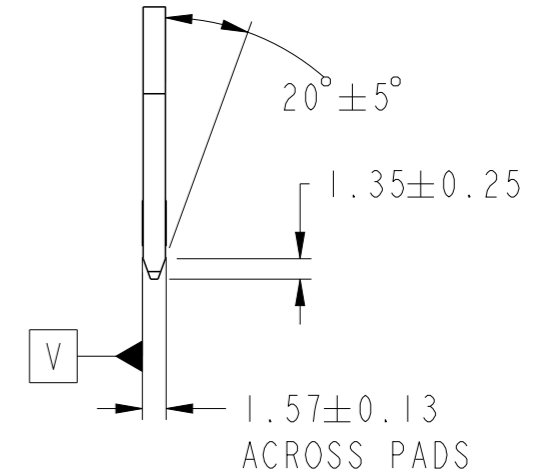
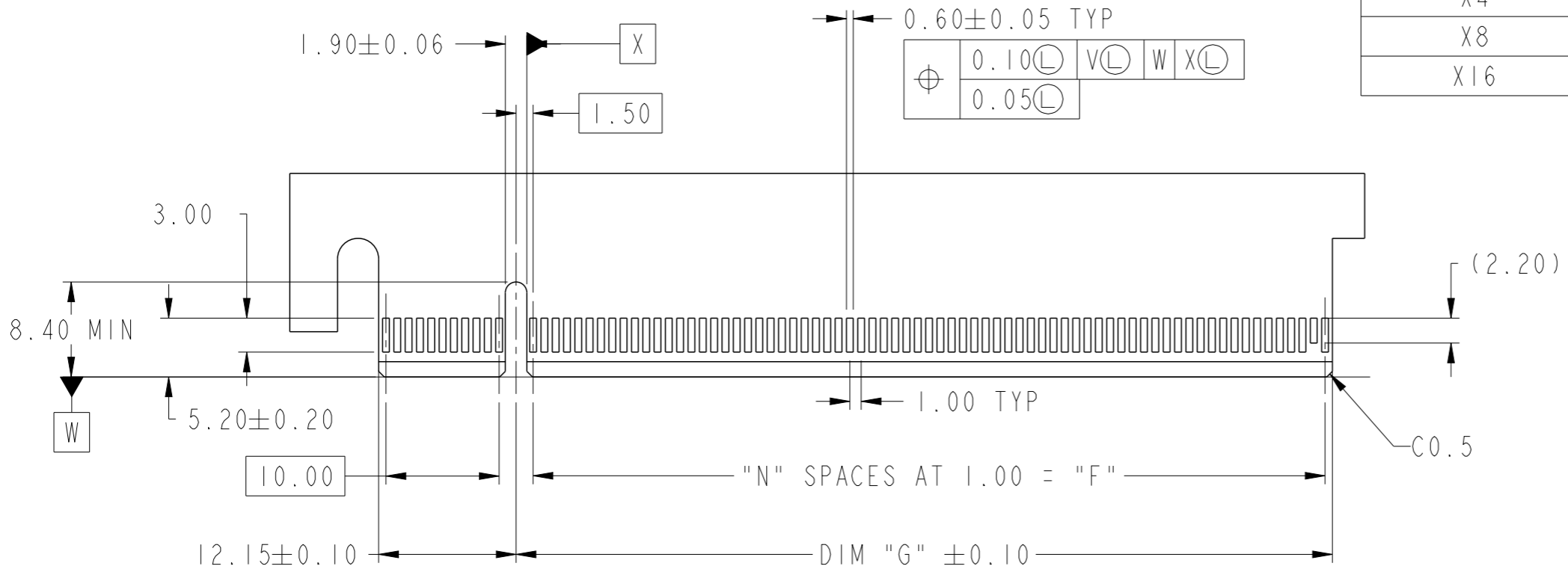


Amphenol  
FCi

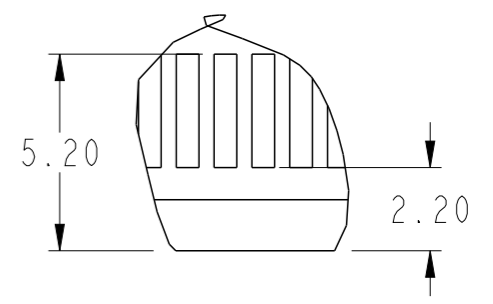
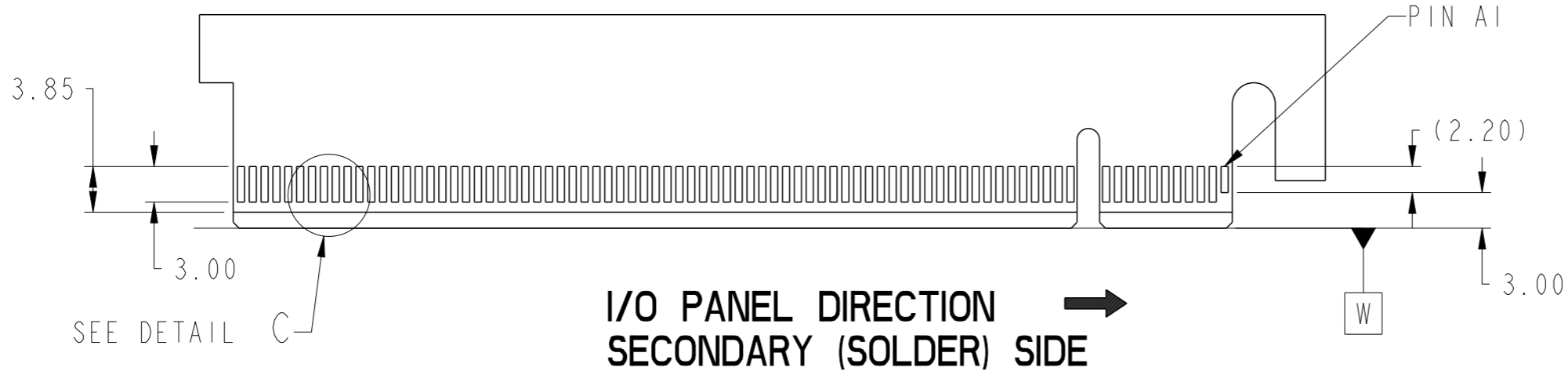
© 2016 AFCI

spec ref	-	dr	Cheong, Matthe	2018/01/09	projection	MM	size	A3	scale	3:1	
tolerance std	ISO 406 ISO 1101	eng	Cheong, Matthe	2018/06/12			ecn no	ELX-S-30426-1			
TOLERANCES UNLESS OTHERWISE SPECIFIED		chr	-	-			rel level	Released			
surface	linear	appr	Koon-Poh Tay	2018/07/12	product family	PCI express		rel level	Released		
ISO 1302	angular	0°	±2°	www.fci.com	cat. no.	-	Product - Customer Drw	sheet 1 of 4			
		linear	0.X	±0.30	PCI Express Gen 5 (32Gb/s)		dwg no	10146070		rev	C
		linear	0.XX	±0.20	SMT Type						
		linear	0.XXX	±0.1							

CONNECTOR LINK WIDTH	POSITION	N	DIM "G"	DIM "F"	PIN "L"
X1	36	6	8.15	6.00	B17
X4	64	20	22.15	20.00	B31
X8	98	37	39.15	37.00	B48
X16	164	70	72.15	70.00	B81



← I/O PANEL DIRECTION  
PRIMARY (COMPONENT) SIDE



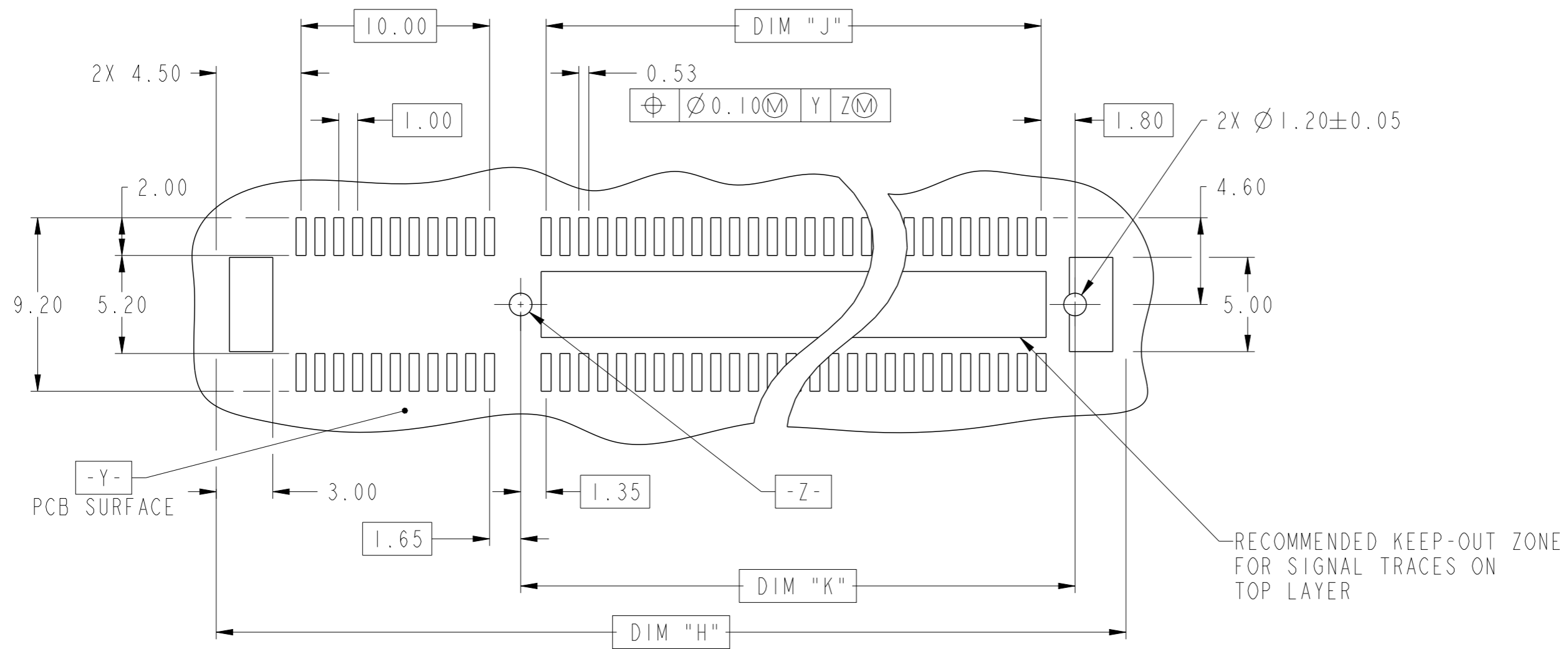
I/O PANEL DIRECTION →  
SECONDARY (SOLDER) SIDE

DETAIL C  
SCALE 5:1

- NO TIE BAR PERMITTED FROM CARD EDGE TO LEADING EDGE OF PAD FOR PIN AI AND PIN "L".
- CHAMFER EDGES MUST BE FREE FROM CUTTING BURRS.
- TOLERANCES : ±0.13.
- CONTACT AFCI ENGINEERING FOR SI REPORT.

spec ref	-	dr	Cheong, Matthe	2018/01/09	projection	MM	size	A3	scale	2:1
tolerance std	ISO 406 ISO 1101	eng	Cheong, Matthe	2018/06/12			ecn no	ELX-S-30426-1	rel level	Released
TOLERANCES UNLESS OTHERWISE SPECIFIED		chr	-	product family						
surface	linear	0.X	±0.30	<b>Amphenol FCI</b> www.fci.com	PCI Express Gen 5 (32Gb/s) SMT Type	cat. no.	Product - Customer Drw	sheet 2 of 4	rev C	
		0.XX	±0.20							
	angular	0°	±2°							

Amphenol FCI  
© 2016 AFCI



### RECOMMENDED PCB LAYOUT, PAD TYPE

POSITION	DIMENSIONS							
	A	B <sup>+0.15</sup> / <sub>-0.05</sub>	C ±0.10	D ±0.23	E ±0.20	H ±0.10	J	K ±0.10
36	6.00	7.65	9.15	25.00	27.00	28.00	6.00	9.15
64	20.00	21.65	23.15	39.00	41.00	42.00	20.00	23.15
98	37.00	38.65	40.15	56.00	58.00	59.00	37.00	40.15
164	70.00	71.65	73.15	89.00	91.00	92.00	70.00	73.15

spec ref	-	dr	Cheong, Matthe	2018/01/09	projection	MM	size	A3	scale	4:1	
tolerance std	ISO 406 ISO 1101	eng	Cheong, Matthe	2018/06/12			ecn no	ELX-S-30426-1			
surface	-	chr	-	-			product family	PCI express			rel level
		appr	Koon-Poh Tay	2018/07/12	Amphenol FCI PCI Express Gen 5 (32Gb/s) SMT Type		dwg no	10146070		rev	C
		ISO 1302	linear	0.X ±0.30 0.XX ±0.20 0.XXX ±0.1	angular	0° ±2°	www.fci.com	cat. no.	-	Product - Customer Drw	sheet 3 of 4

PRODUCT NUMBER CODE

10146070-□□□□OLF

HOUSING COLOR

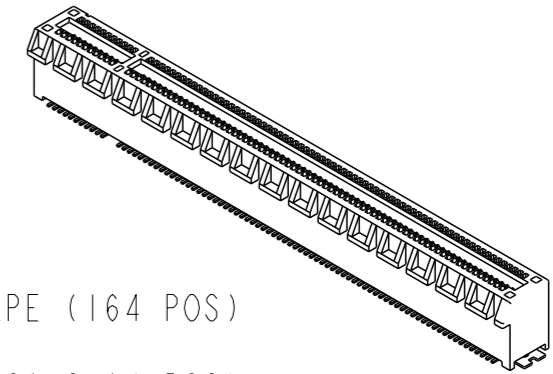
1: BLACK

CONTACT AREA PLATING

1: 30u" Au  
2: 15u" Au

PACKAGING OPTIONS

- A: HARD TRAY (DIM: 323 x 136 x 19) WITH KAPTON TAPE (164 POS)
- Q: HARD TRAY (DIM: 323 x 136 x 19) (164 POS)
- C: SOFT TRAY (317.5 x 235 x 18) WITH PICK-UP CAP (36 & 64 POS)
- T: SOFT TRAY (317.5 x 235 x 18) WITH KAPTON TAPE (36 & 64 POS)
- X: HARD TRAY (DIM: 330 x 235 x 19.3) WITH PICK UP CAP (98 & 164 POS)
- Y: HARD TRAY (DIM: 330 x 235 x 19.3) WITH KAPTON TAPE (98 & 164 POS)
- Z: HARD TRAY (DIM: 330 x 235 x 19.3) WITH KAPTON TAPE, 86MM (164 POS)

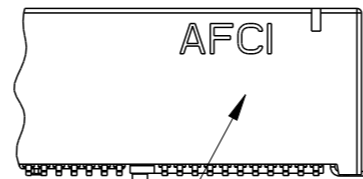


NOTES:

1. MATERIAL:  
HOUSING: LCP  
CONTACT: COPPER ALLOY.  
HOLDDOWN CLIP: COPPER ALLOY
2. PLATING:  
CONTACT: UNDERPLATE: 50u" NICKEL OVER ALL.  
SOLDER AREA: 100u" TIN (LEAD FREE).  
MATING AREA: SEE PRODUCT NUMBER CODE.  
HOLDDOWN CLIP: 100u" TIN OVER 50 u" NICKEL.
3. PRODUCT SPECIFICATION: GS-12-1406
4. PRODUCT MEETS EUROPEAN UNION DIRECTIVES AND OTHER COUNTRY REGULATIONS AS DESCRIBED IN GS-47-004.
5. DATE CODE "MMDDYYL", MMDDYY IS ASSEMBLY DATE. L IS AFCI PRODUCTION SITE.
6. THE HOUSING WILL WITHSTAND EXPOSURE TO 260° PEAK TEMPERATURE FOR 10 SECONDS IN A CONVECTION, INFRA-RED OR VAPOR PHASE REFLOW OVEN.

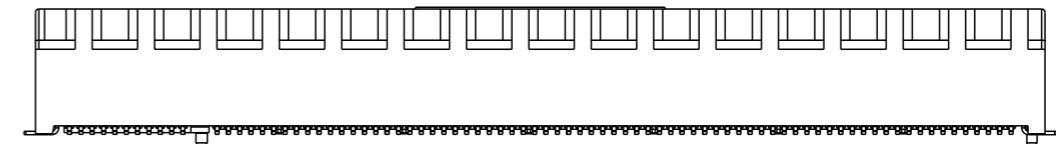
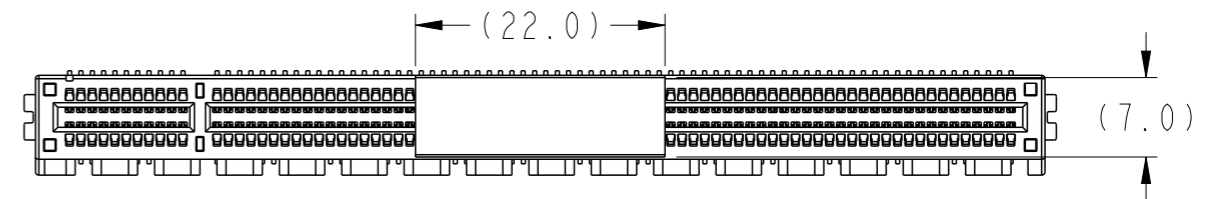
NO. OF POSITION

- 0: 36 POSITIONS
- 1: 64 POSITIONS
- 2: 98 POSITIONS
- 3: 164 POSITIONS

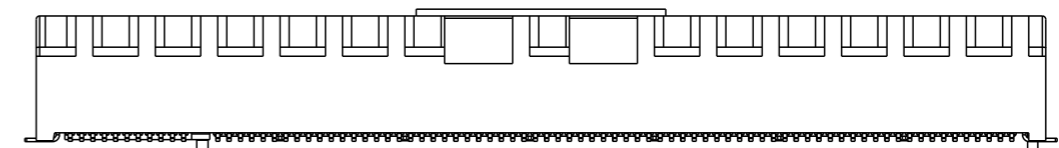
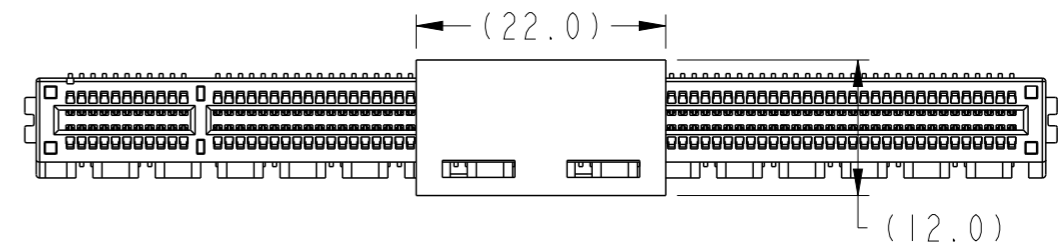


DATA CODE & PARTNO

POSITION OF KAPTON TAPE



POSITION OF PICK UP CAP



spec ref	-	dr	Cheong, Matthe	2018/01/09	projection	MM	size	A3	scale	2:1	
tolerance std	ISO 406 ISO 1101	eng	Cheong, Matthe	2018/06/12			ecn no	ELX-S-30426-1	rel level	Released	
TOLERANCES UNLESS OTHERWISE SPECIFIED		chr	-	-							
surface	linear	appr	Koon-Poh Tay	2018/07/12	product family	PCI express	dwg no		10146070	rev	C
ISO 1302	angular	<b>Amphenol FCI</b> www.fci.com		PCI Express Gen 5 (32Gb/s) SMT Type		Product - Customer Drw		sheet 4 of 4			

Amphenol FCI

© 2016 AFCI